



Pattern Collection: Accessory



Sunset Slouch

Rachel Brockman

SIZE

Newborn (Baby, Toddler, Child/Teen, Adult Small, Adult Medium, Adult Large)

FINISHED MEASUREMENTS

Circumference: 13½ (16¾, 18½, 20, 21½, 22½, 23¼)"

Depth: 5½ (7¼, 7¾, 9¼, 9½, 11, 11)"

MATERIALS

Universal Yarn *Deluxe Worsted Superwash* (100% superwash wool; 100g/220 yds)

- 756 Channel (A) – 1 ball (all sizes)

Wisdom Yarns *Poems* (100% wool; 50g/109 yds)

- 612 Romance (B) – 1 (1, 1, 1, 1, 2, 2) skein(s)

Needles: US Size 7 (4.5 mm) 16" circular or DPNs (for Newborn size) or size needed to obtain gauge

US Size 9 (5.5 mm) 16" circ and set of DPNs or size needed to obtain gauge

Notions: Tapestry needle, stitch marker

GAUGE

20 sts x 24 rows = 4" in Arrows patt with larger ndls

Save time, check your gauge.

Knit, Relax, Smile, Repeat!

2017 © Universal Yarn, Inc.

All rights reserved.

www.universalyarn.com

This pattern may not be reproduced for business, trade or sale.

PATTERN NOTES

Self-shading *Poems* makes this addictive colorwork hat shine. Sized baby through adult, this hat makes the perfect selfish project or a quick gift. Baby size shown in Wisdom Yarns Poems color Chevron 616 and Universal Yarn Deluxe Worsted Superwash color 715 Teal Viper.

This hat is worked in the round from the bottom up. Color changes are achieved through the stranded method of knitting. You may wish to place a stitch marker between each pattern repeat. Use a contrast color marker to distinguish the beginning of the round from pattern repeat markers.

This pattern uses the 1x1 long-tail tubular cast-on method for a neat edge. There are many tutorials available online for this technique. If in doubt, use another stretchy cast-on technique.

STITCH GUIDE

K1, P1 Rib

(even number of sts)

Rnd 1: *K1, P1, rep from * to end.

Rep Rnd 1 for patt.

HAT

Brim

With smaller ndls and A, using the 1x1 long-tail tubular method, cast on 68 (84, 92, 100, 108, 112, 116) sts. Pm and join in the rnd, being careful not to twist sts. Work in K1, P1 Rib for 2 rows, break A. With B, work in K1, P1 Rib until piece meas 1 (1½, 1¾, 2, 2¼, 2½, 2½)" Switch to larger ndls.

Main Hat

Work Rnds 1-16 of Arrows patt 1 (1, 1, 2, 2, 2, 2) times. Patt will be repeated 17 (21, 23, 25, 27, 28, 29) times around.

Sizes Baby, Toddler, Adult Medium & Adult Large only:

Work Rnds 1-12 of Arrows patt one more time.

Sizes Newborn, Child/Teen, Adult Small Only:
Work Rnds 1-4 of Arrows patt one more time.

Shape Crown

Note: When there are too few sts to fit on the circ nrl, switch to dpns.

Sizes Baby, Toddler, Adult Medium & Adult Large only:

Work Rnds 1-6 of Decrease Chart B, patt will be repeated 21 (23, 28, 29) times around – 63 (69, 84, 87) sts dec'd; 21 (23, 28, 29) sts rem.

Sizes Newborn, Child/Teen, Adult Small Only:

Work Rnds 1-6 of Decrease Chart A, patt will be repeated 17 (25, 27) times around – 51 (75, 81) sts dec'd; 16 (23, 25) sts rem.

Size Adult Medium Only:

Rnd 1: * K2tog; rep from * to end – 14 sts dec'd; 14 sts rem.

Sizes Newborn, Child/Teen, Adult Small Only:

Rnd 1: K1, * ssk; rep from * to end – 8, 12, 13 sts dec'd; 9 (13, 14) sts rem.

Sizes Baby, Toddler, & Adult Large Only:

Rnd 1: K1, * k2tog; rep from * to end – 10 (11, 14) sts dec'd; 11 (12, 15) sts rem.

All Sizes

Break yarn leaving an 8" tail, pass tail through rem sts, pull taut, and fasten off.

FINISHING

Block to measurements and weave in ends. Make a 2½ (2½, 2½, 3½, 3½, 3½)" pom-pom with A and secure to crown of hat.



Knit, Relax, Smile, Repeat!

2017 © Universal Yarn, Inc.

All rights reserved.

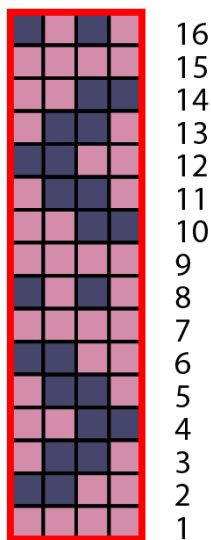
www.universalyarn.com

This pattern may not be reproduced for business, trade or sale.

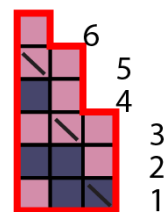
Abbreviations

circ	circular
dec('d)	decrease(d)
dpn(s)	double pointed needle(s)
inc('d)	increase(d)
k	knit
k2tog	knit 2 stitches together (1 st dec'd)
m	marker
meas	measures
ndl	needle
p	purl
patt	pattern
pm	place marker
rem	remain(ing)
rep	repeat
rnd	round
ssk	slip next 2 sts individually knitwise, slip them back to left needle in this position, knit them together through the back loops (1 st dec'd)
St st	Stockinette stitch (knit on RS rows, purl on WS rows; in the rnd, knit every rnd)
st(s)	stitch(es)

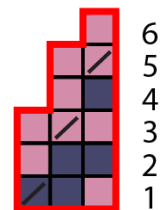
Arrows



Decrease Chart A



Decrease Chart B



Key

	with A, knit		with B, k2tog
	with B, knit		with A, k2tog
	with B, ssk		
	with A, ssk		

Knit, Relax, Smile, Repeat!

2017 © Universal Yarn, Inc.

All rights reserved.

www.universalyarn.com

This pattern may not be reproduced for business, trade or sale.