



## Pattern Collection: Accessory



### **Patty Hatty**

Designed by Rachel Brockman

### **SIZES**

Adult Medium

### **FINISHED MEASUREMENTS**

**Circumference:** 19¼"

*(stretches to 24")*

**Length:** 9¼"

### **MATERIALS**

**Fibra Natura Dona** (100% superwash merino; 50g/126 yds)

- 126 Green Eyed (MC) – 2 balls
- 138 Olive (CC) – 1 ball

**Needle:** US Size 7 (4.5 mm) 16" circular, set of dpns or size needed to obtain gauge

US Size 5 (3.75 mm) 16" circular

**Notions:** Tapestry needle, stitch marker, 3" pom-pom maker, cable needle (cn)

### **GAUGE**

26 sts x 30 rows = 4" in Cable Column patt

**Save time, check your gauge.**

*Knit. Relax. Smile. Repeat!*

2019 © Universal Yarn, Inc.

All rights reserved.

[www.universalyarn.com](http://www.universalyarn.com)

This pattern may not be reproduced for business, trade or sale.

## PATTERN NOTES

Patty loves to wear hats – that’s why we call her Patty Hatty. And this is her favorite party hat for the 17<sup>th</sup> of March. You’ll be all set to dance your best Irish jig in this festive cabled hat. Knit from the bottom up in the round, this classic cabled hat gets a modern update with a brightly colored pom-pom.

## STITCH GUIDE

**3x3 Right Cross (RC):** Sl next 3 sts to cn and hold in back, k3 from left ndl, k3 from cn.

**3x3 Left Cross (LC):** Sl next 3 sts to cn and hold in front, k3 from left ndl, k3 from cn.

**2x1 Right Cross (RC):** Sl next st to cn and hold in back, k2 from left ndl, k1 from cn.

**2x1 Left Cross (LC):** Sl next 2 sts to cn and hold in front, k1 from left ndl, k2 from cn.

## K2, P1 Ribbing

*(multiple of 3 sts)*

**Rnd 1:** \* K2 p1; rep from \* to end.

Rep Rnd 1 for patt.

## Cable Column

*(multiple of 21 sts)*

**Rnd 1:** \* P9, [3x3 RC] 2 times; rep from \* to end.

**Rnds 2-4:** \* P9, k12; rep from \* to end.

**Rnd 5:** \* P9, k3, 3x3 LC, k3; rep from \* to end.

**Rnds 6-8:** \* P9, k12; rep from \* to end.

Rep Rnds 1-8 for patt.

## HAT

With smaller circ ndl and MC, cast on 126 sts. PM and join to work in the rnd, being careful not to twist.

### Brim

Work in K2, P1 Ribbing until piece meas 1¾" from cast-on edge.

### Hat Body

Switch to larger circ ndl. Rep Rnds 1-8 of Cable Column hat, 4 times, then rep Rnds 1-4, 1 more time. Patt will be repeated 6 times across each rnd.

## Shape Crown

*Note 1: This section is also charted for your convenience.*

*Note 2: When there are too few sts to fit comfortably on the circ ndl, switch to dpns.*

**Rnd 1:** \* P4, p2tog, p3, k3, 3x3 LC, k3; rep from \* to end – 1 st dec’d each rep, 20 sts rem each rep, 120 total sts rem.

**Rnd 2:** \* P8, k12; rep from \* to end.

**Rnd 3:** \* P2, ssp, p2tog, p2, k12; rep from \* to end – 2 sts dec’d each rep, 18 sts rem each rep, 108 total sts rem.

**Rnd 4:** \* P6, k12; rep from \* to end.

**Rnd 5:** \* P1, ssp, p2tog, p1, 3x3 RC, 3x3 LC; rep from \* to end – 2 sts dec’d each rep, 16 sts rem each rep, 96 total sts rem.

**Rnd 6:** \* P4, k12; rep from \* to end.

**Rnd 7:** \* Ssp, p2tog, k12; rep from \* to end – 2 sts dec’d each rep, 14 sts rem each rep, 84 total sts rem.

**Rnd 8:** \* P2, k12; rep from \* to end.

Remove beg of rnd m. Sl next st to right ndl. Pm to denote new bor.

**Rnd 9:** \* K2tog, k2, 3x3 LC, k2, ssk; rep from \* to end – 2 sts dec’d each rep, 12 sts rem each rep, 72 total sts rem.

**Rnd 10:** \* K12; rep from \* to end.

**Rnd 11:** \* K2tog, k8, ssk; rep from \* to end – 2 sts dec’d each rep, 10 sts rem each rep, 60 total sts rem.

**Rnd 12:** \* K10; rep from \* to end.

**Rnd 13:** \* K2tog, 2x1 LC, 2x1 RC, ssk; rep from \* to end – 2 sts dec’d each rep, 8 sts rem each rep, 48 total sts rem.

**Rnd 14:** \* K8; rep from \* to end.

**Rnd 15:** \* K2tog, k4, ssk; rep from \* to end – 2 sts dec’d each rep, 6 sts rem each rep, 36 total sts rem.

**Rnd 16:** \* K6; rep from \* to end.

**Rnd 17:** \* Ssk, k2, k2tog; rep from \* to end – 2 sts dec’d each rep, 4 sts rem each rep, 24 total sts rem.

**Rnd 18:** \* K4; rep from \* to end.

**Rnd 19:** \* Ssk, k2tog; rep from \* to end – 2 sts dec’d each rep, 2 sts rem each rep, 12 total sts rem.

*Knit. Relax. Smile. Repeat!*

2019 © Universal Yarn, Inc.

All rights reserved.

[www.universalyarn.com](http://www.universalyarn.com)

This pattern may not be reproduced for business, trade or sale.

Break yarn leaving 6" tail. Pass tail through rem live sts, pull taut, fasten off.

### FINISHING

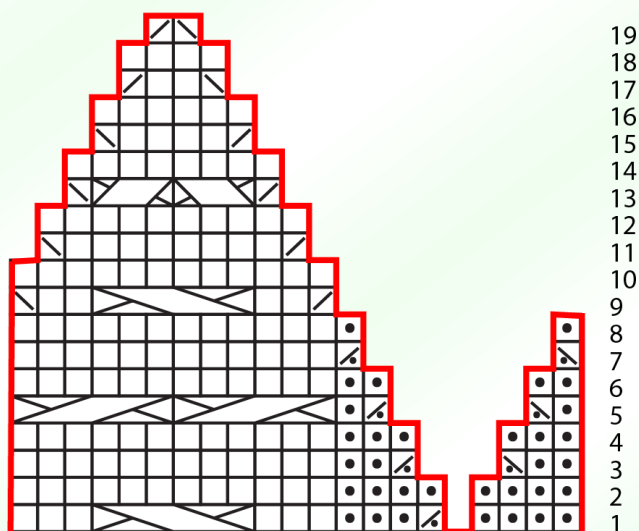
Weave in ends and block to finished measurements. With CC, make a 3" pom-pom. Tie pom-pom to top of hat.

### Abbreviations

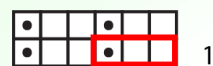
<b>bor</b>	beginning of round
<b>CC</b>	contrast color
<b>circ</b>	circular
<b>dec('d)</b>	decrease(d)
<b>dpn(s)</b>	double pointed needle(s)
<b>k</b>	knit
<b>k2tog</b>	knit 2 stitches together (1 st dec'd)
<b>m</b>	marker
<b>MC</b>	main color
<b>meas</b>	measures

<b>ndl</b>	needle
<b>p</b>	purl
<b>p2tog</b>	purl 2 sts together (1 st dec'd)
<b>patt</b>	pattern
<b>pm</b>	place marker
<b>rem</b>	remain(ing)
<b>rep</b>	repeat
<b>rnd</b>	round
<b>sl</b>	slip
<b>ssk</b>	slip next 2 sts individually knitwise, slip them back to left needle in this position, knit them together through the back loops (1 st dec'd)
<b>ssp</b>	slip next 2 sts individually knitwise, slip them back to left needle in this position, purl them together through the back loops (1 st dec'd)
<b>st(s)</b>	stitch(es)










Shape Crown



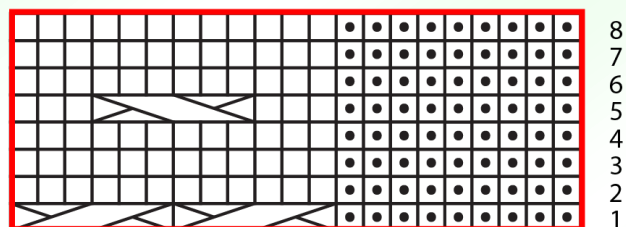
K2, P1 Ribbing



### Key

- knit
- purl
-  3x3 RC
-  3x3 LC
-  2x1 RC
-  2x1 LC
-  p2tog
-  ssp
-  k2tog
-  ssk
-  pattern repeat

Cable Column



*Knit. Relax. Smile. Repeat!*

2019 © Universal Yarn, Inc.

All rights reserved.

www.universalyarn.com

This pattern may not be reproduced for business, trade or sale.