



Pattern Collection: Women



Mod Tiles Cardigan

Designed by Universal Yarn Design Team

SIZES

Small/Medium (Large/1X/2X, 3X/4X/5X)
Shown in Small size modeled with 5" of positive ease

FINISHED MEASUREMENTS

Bust: 38½ (51, 63½)" (buttoned)

Length: 22¾ (23½, 24¼)"

MATERIALS

Universal Yarn *Deluxe DK Tweed Superwash* (90% superwash wool, 7% acrylic, 3% viscose; 100g/284 yds)

- 413 Smoke (MC) – 6 (8, 10) ball
- 401 Garnet (CC1) – 1 ball, all sizes
- 403 Hazelnut (CC2) – 1 ball, all sizes
- 405 Pine (CC3) – 1 ball, all sizes
- 406 Aegean (CC4) – 1 ball, all sizes
- 407 Denim (CC5) – 1 ball, all sizes
- 408 Navy (CC6) – 1 ball, all sizes

Hook: US Size G-6 (4 mm) *or size needed to obtain gauge*

Notions: Tapestry needle, removable stitch markers, four ¾" buttons

Knit. Relax. Smile. Repeat!

2018 © Universal Yarn, Inc.

All rights reserved.

www.universalyarn.com

This pattern may not be reproduced for business, trade or sale.

GAUGE

20 sts x 11 rows = 4 in double crochet

1 Flower Motif = 3⅝" square

Save time, check your gauge.

PATTERN NOTES

You may think that crochet squares are most suitable on home décor. Heck, we did too (but not entirely – we're all for a bit of unexpected fun)! In fact, this gorgeous cardigan was neglected in our office for some time until, finally, one of us threw it on and fell in love! The Mod Tiles Cardigan is a fresh take on traditional crochet motifs. This cardigan is fall ready – Deluxe DK Tweed Superwash will keep you warm and cozy, yet three-quarter sleeves and open portions of the square motifs will leave you completely comfortable in the autumn sun. This cardigan was built for sweater weather. Simply layer it over your favorite top with some denim and booties – you're good to go.

STITCH GUIDE

Spike sc: Insert hk into sp indicated and pull up a lp even with work, yo and pull through both lps on hk.

Flower Motif

With CC ch 5, join with sl st to form ring.

Rnd 1: * Ch 3, 3 dc in ring, ch 3, sl st in ring; rep from * 3 more times.

Rnd 2: Sl st to top of ch-3, * sc in ch 3, ch 2, dc3tog, ch 2, sc in ch 3, ch 2; rep from * 3 more times, join with sl st to beg sc. Fasten off.

Join MC to top of any dc3tog from Rnd 2.

Rnd 3: * Sc in top of dc3tog, ch 3, [Spike sc, ch 6, Spike sc] into beg ch 5, ch 3; rep from * 3 more times, join with sl st to beg sc.

Rnd 4: Sc in same sc, 2 sc in ch-3 sp, * [4 dc, ch 2, 4 dc] into ch-6 sp, 2 sc in ch-3 sp, sc in sc, 2 sc in ch-3 sp; rep from * 2 more times, [4 dc, ch 2, 4 dc] into ch-6 sp, 2 sc in ch-3 sp, join with sl st to beg sc. Fasten off.

CARDIGAN

Back

Make 36 (48, 60) Flower Motifs, evenly dividing

CC centers (Rnds 1-2) bet the 6 CCs. Lay out Flower Motifs in a grid of 6 (8, 10) wide x 6 tall, arranging colors as desired. Sew Motifs tog with mattress st.

Upper Edging

With RS facing, join MC to upper right corner.

Row 1 (RS): Ch 3 (counts as dc), work 94 (126, 158) more dc evenly along top edge, placing 1 dc in each st and sp from final Rnd 4 of Flower Motif, and 1 dc in the mattress st join – 95 (127, 159) dc. Turn.

Rows 2-8 (10, 12): Ch 3 (counts as dc), dc in each dc across, turn.

Fasten off.

Left Front

Make 18 (24, 30) Flower Motifs, evenly dividing CC centers (Rnds 1-2) bet the 6 CCs. Lay out Flower Motifs in a grid of 3 (4, 5) wide x 6 tall, arranging colors as desired. Sew Motifs tog with mattress st.

Upper Edging

With RS facing, join MC to upper right corner.

Row 1 (RS): Ch 3 (counts as dc), work 46 (62, 78) more dc evenly along top edge, placing 1 dc in each st and sp from final Rnd 4 of Flower Motif, and 1 dc in the mattress st join – 47 (63, 79) dc. Turn.

Work 0 (2, 4) more rows even in dc.

Shape Neck

Row 1 (WS): Sl st in first 7 (9, 11) dc, sl st in next dc, ch 3 (counts as dc), dc2tog, dc in each dc to end, turn – 39 (53, 67) dc rem.

Row 2 (RS): Ch 3 (counts as dc), dc in each dc to last 3 dc, dc2tog, dc in last dc, turn – 38 (52, 66) dc rem.

Row 3: Ch 3 (counts as dc), dc2tog, dc in each dc to end, turn – 37 (51, 65) dc rem.

Rows 4-7: Rep Rows 2-3, 2 more times – 33 (47, 61) sts rem. Fasten off.

Right Front

Work as for Left Front to Shape Neck section.

Shape Neck

Row 1 (WS): Ch 3 (counts as dc), dc in each dc to last 10 (12, 14) dc, dc2tog, dc in next dc, turn,

Knit. Relax. Smile. Repeat!

2018 © Universal Yarn, Inc.

All rights reserved.

www.universalyarn.com

This pattern may not be reproduced for business, trade or sale.

leaving rem 7 (9, 11) dc unworked – 39 (53, 67) dc rem.

Row 2 (RS): Ch 3 (counts as dc), dc2tog, dc in each dc to end, turn – 38 (52, 66).

Row 3: Ch 3 (counts as dc), dc in each dc to last 3 dc, dc2tog, dc in last dc, turn – 37 (51, 65) dc rem.

Rows 4-7: Rep Rows 2-3, 2 more times – 33 (47, 61) sts rem. Fasten off.

Sleeves

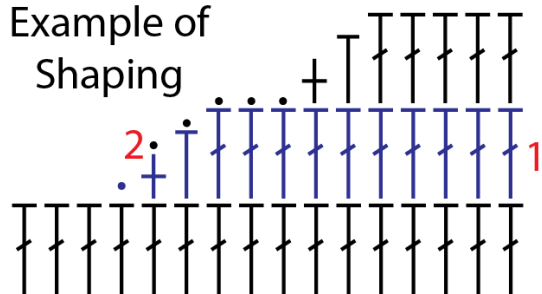
Make 15 (all sizes) Flower Motifs, evenly dividing CC centers (Rnds 1-2) bet the 6 CCs. Lay out Flower Motifs in a grid of 3 wide x 5 tall. Sew Motifs tog with mattress st.

First Side

Row 1 (RS): Ch 3 (counts as dc), work 78 more dc evenly along top edge, placing 1 dc in each st and sp from final Rnd 4 of Flower Motif, and 1 dc in the mattress st join –79 dc. Turn.

Work 1 (2, 3) more rows even in dc.

Example of Shaping



Shape Side

Small/Medium Size only:

Row 1 (RS): Ch 3 (counts as dc), dc in next 59 dc, hdc in next dc, sc in next dc, sl st in next dc, turn.

Row 2 (WS): Sl st in sc, sl st in hdc, sl st in next 18 dc, sc in next dc, hdc in next dc, dc in each dc to end, turn.

Row 3: Ch 3 (counts as dc), dc in next 19 dc, hdc in next dc, sc in next dc, sl st in next dc. Fasten off.

Large/1X/2X Size only:

Row 1 (RS): Sl st in first 11 dc, sc in next dc, hdc in next dc, dc in each dc to end, turn.

Row 2 (WS): Ch 3 (counts as dc), dc in next 52 dc, hdc in next dc, sc in next dc, sl st in next dc, turn.

Row 3: Sl st in sc, sl st in hdc, sl st in next 11 dc, sc in next dc, hdc in next dc, dc in each dc to end.

Row 4: Ch 3 (counts as dc), dc in next 26 dc, hdc in next dc, sc in next dc, sl st in next dc, turn.

Row 5: Rep Row 3. Fasten off.

3X/4X/5X Size only:

Row 1 (RS): Ch 3 (counts as dc), dc in next 69 dc, hdc in next dc, sc in next dc, sl st in next dc, turn.

Row 2 (WS): Sl st in sc, sl st in hdc, sl st in next 8 dc, sc in next dc, hdc in next dc, dc in each dc to end, turn.

Row 3: Ch 3 (counts as dc), dc in next 49 dc, hdc in next dc, sc in next dc, sl st in next dc.

Row 4: Rep Row 2.

Row 5: Ch 3 (counts as dc), dc in next 29 dc, hdc in next dc, sc in next dc, sl st in next dc.

Row 6: Rep Row 2.

Row 7: Ch 3 (counts as dc), dc in next 9 dc, hdc in next dc, sc in next dc, sl st in next dc. Fasten off.

Second Side

Row 1 (RS): Ch 3 (counts as dc), work 78 more dc evenly along top edge, placing 1 dc in each st and sp from final Rnd 4 of Flower Motif, and 1 dc in the mattress st join –79 dc. Turn.

Work 1 (2, 3) more rows even in dc.

Small/Medium Size only:

Row 1 (RS): Sl st in first 17 dc, sc in next dc, hdc in next dc, dc in each dc to end, turn.

Row 2 (WS): Ch 3 (counts as dc), dc in next 39 dc, hdc in next dc, sc in next dc, sl st in next dc, turn.

Row 3: Sl st in sc, sl st in hdc, sl st in next 18 dc, sc in next dc, hdc in next dc, dc in each dc to end. Fasten off.

Large/1X/2X Size only:

Row 1 (RS): Ch 3 (counts as dc), dc in next 65 dc, hdc in next dc, sc in next dc, sl st in next dc, turn.

Row 2 (WS): Sl st in sc, sl st in hdc, sl st in next 11 dc, sc in next dc, hdc in next dc, dc in each dc to end, turn.

Row 3: Ch 3 (counts as dc), dc in next 39 dc, hdc in next dc, sc in next dc, sl st in next dc, turn.

Row 4: Rep Row 2.

Row 5: Ch 3 (counts as dc), dc in next 13 dc, hdc in next dc, sc in next dc, sl st in next dc. Fasten off.

Knit. Relax. Smile. Repeat!

2018 © Universal Yarn, Inc.

All rights reserved.

www.universalyarn.com

This pattern may not be reproduced for business, trade or sale.



3X/4X/5X Size only:

Row 1 (RS): Sl st in first 7 dc, sc in next dc, hdc in next dc, dc in each dc to end, turn.

Row 2 (WS): Ch 3 (counts as dc), dc in next 59 dc, hdc in next dc, sc in next dc, sl st in next dc, turn.

Row 3: Sl st in sc, sl st in hdc, sl st in next 8 dc, sc in next dc, hdc in next dc, dc in each dc to end.

Row 4: Ch 3 (counts as dc), dc in next 39 dc, hdc in next dc, sc in next dc, sl st in next dc, turn.

Row 5: Rep Row 3.

Row 6: Ch 3 (counts as dc), dc in next 19 dc, hdc in next dc, sc in next dc, sl st in next dc, turn.

Row 7: Rep Row 3. Fasten off.

Sleeve Edging

With RS facing, join MC to lower edge of Sleeve.

Row 1 (RS): Ch 3 (counts as dc), work 54 (58, 62) more dc evenly along edge of Sleeve, turn – 55 (59, 63) dc.

Rows 2-3: Ch 3 (counts as dc), dc in each dc to end, turn. Fasten off.

FINISHING

Block pieces to finished measurements. Sew shoulder seams. Center top of Sleeve to shoulder seam. Sew Sleeve to body. Sew Sleeve and side seams.

Body Edging

With RS facing, join MC to Left Front at Neck edge just before Neck shaping.

Note: Dc at the same rate as other pieces, placing 1 dc in each st and sp from final Rnd 4 of Flower Motif, and 1 dc in the mattress st join.

Row 1 (RS): Ch 3 (counts as dc), dc evenly along Left Front to lower edge, 3 dc in corner, pm on center of these 3 dc, dc evenly along lower edge of cardigan, 3 dc in corner, pm on the center of these 3 dc, dc evenly along Right Front to beg of Right Front neck shaping, turn.

Row 2 (WS) (Buttonhole Row): Ch 3 (counts as dc), dc in next 8 dc, [ch 2, sk next 2 dc, dc in next 20 dc] 3 times, ch 2, sk next 2 dc, dc in each dc to end, placing 3 dc in each corner dc, turn – 4 buttonholes.

Row 3: Ch 3 (counts as dc), dc in each dc to end. Fasten off.

Collar

Join MC to Right Front on Row 1 of Neck Shaping.

Row 1 (RS): Ch 3 (counts as dc), work 20 (22, 24) more dc along Right Front Neck, 29 (33, 37) dc along Back Neck, and 21 (23, 25) dc along Left Front Neck, turn – 71 (79, 87) dc.

Rows 2-8: Ch 3 (counts as dc), dc in each dc to end, turn. Fasten off.

Sew buttons to Left Front opposite buttonholes. Weave in ends.

Knit. Relax. Smile. Repeat!

2018 © Universal Yarn, Inc.

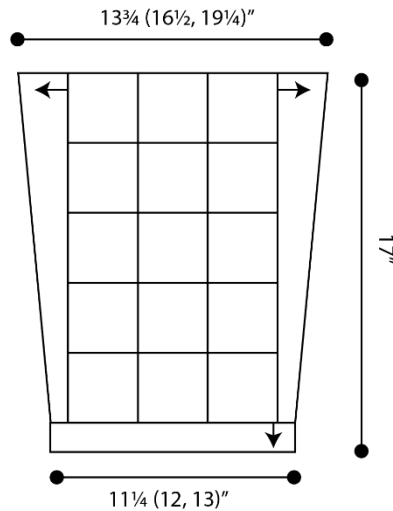
All rights reserved.

www.universalyarn.com

This pattern may not be reproduced for business, trade or sale.

Abbreviations

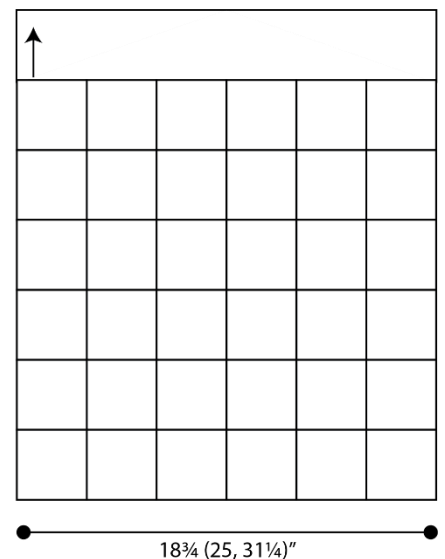
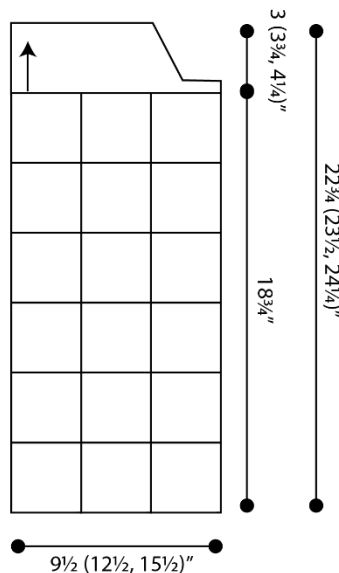
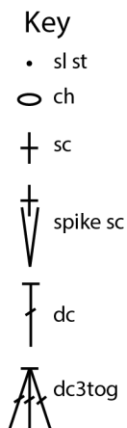
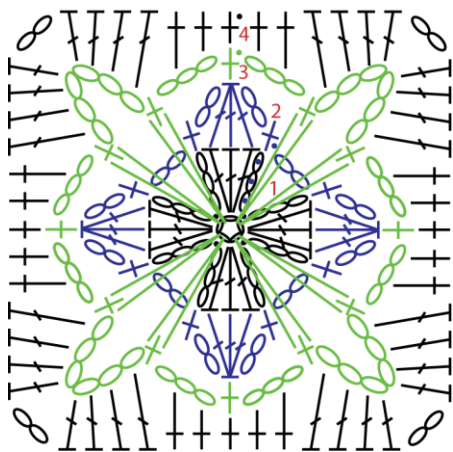
beg	begin(ning)
bet	between
CC	contrast color
ch	chain
dc	double crochet
dc2tog	double crochet two sts together (1 st dec'd)
dec('d)	decrease(d)
hdc	half double crochet
hk	hook
lp(s)	loop(s)
MC	main color
pm	place marker
rem	remain(ing)
rep	repeat
rnd	round
RS	right side
sc	single crochet
sk	skip
sl	slip
sp	space(s)
st(s)	stitch(es)
tog	together
WS	wrong side
yo	yarn over



Front
Note: Large/1X/2X size will be 4 motifs wide
3x/4x/5x size will be 5 motifs wide

Back
Note: Large/1X/2X size will be 8 motifs wide
3x/4x/5x size will be 10 motifs wide

Flower Motif



Knit. Relax. Smile. Repeat!

2018 © Universal Yarn, Inc.

All rights reserved.

www.universalyarn.com

This pattern may not be reproduced for business, trade or sale.