



Pattern Collection: Accessory



Magma Shawl

Designed by Rachel Brockman

SIZES

One Size

FINISHED MEASUREMENTS

Wingspan: 65"

Depth: 37"

MATERIALS

Universal Yarn Amphora (60% acrylic, 20% mohair, 20% alpaca; 100g/306 yds)

- 103 Mecca (MC) – 3 skeins
- 113 Reign (CC) – 2 balls

Needle: US Size 8 (5 mm) 40" circ (to accommodate large number of sts) *or size needed to obtain gauge*

US Size 9 (5.5 mm) 40" circ (for edging)

Notions: Tapestry needle, stitch markers (optional)

GAUGE

16 sts x 28 rows = 4" in Stripes patt using smaller ndl

Save time, check your gauge.

Knit, Relax, Smile, Repeat!

2019 © Universal Yarn, Inc.

All rights reserved.

www.universalyarn.com

This pattern may not be reproduced for business, trade or sale.

PATTERN NOTES

This shawl is named not only for its color, but also for the stitch patterns within. The upper striped portion represents the layers of igneous rocks, while the lower lace portion appears as a fiery hot flow of lava. Knit in alpaca-blend Amphora, Magma will keep you nice and toasty (but not lava-hot – don't worry).

The Stripes and Lace patterns are garter based, so this shawl is aesthetically reversible and is pleasing on both sides. The half circle shape makes it easy to drape over the shoulders. Wearing this piece may just make you spontaneously want to twirl, too!

I-Cord Bind-Off

Cast on 3 sts to first st on left ndl using knitted cast-on. * K2, k2tog tbl (1 st bound off), slip these 3 sts back to left ndl; rep from * until all sts have been bound off. Bind off rem 3 I-Cord sts.

STITCH GUIDE

Lace

(multiple of 8 sts + 9)

Row 1 (RS): K1, yo, ssk, k3, k2tog, * yo, k1, yo, ssk, k3, k2tog; rep from * to last st, yo, k1.

WS Rows 2-14: Knit to end.

RS Rows 3 & 5: Rep Row 1.

Row 7: K2, yo, ssk, k1, k2tog, yo, * k3, yo, ssk, k1, k2tog, yo; rep from * to last 2 sts, k2.

Row 9: K3, yo, sl 2-k1-p2sso, yo, k1, * k4, yo, sl 2-k1-p2sso, yo, k1; rep from * to last 2 sts, k2.

Row 11: K1, k2tog, yo, k3, yo, * ssk, k1, k2tog, yo, k3, yo; rep from * to last 3 sts, ssk, k1.

Row 13: K2tog, yo, k5, * yo, sl 2-k1-p2sso, yo, k5; rep from * to last 2 sts, yo, ssk.

Rep Rows 1-14 for patt.

Stripes

(any number of sts)

Row 1 (RS): With CC, knit.

Row 2 (WS): With CC, purl.

Row 3: With MC, purl.

Row 4: With MC, knit.

Rep Rows 1-4 for patt.

SHAWL

Stripe Section

With smaller ndl and CC, cast on 6 sts.

Row 1 (RS): Work Row 1 of Stripes patt to end.

Row 2 (WS): Work Row 2 of Stripes patt to end.

Row 3: With MC, k1, [m1, k1] 4 times, k1 – 4 sts inc'd, 10 sts.

Rows 4: Cont in Stripes patt as est'd to end.

Note: Cont working Stripes patt as est'd. Inc's always occur on RS rows. If an inc falls on Row 1 of Stripes patt, work incs using CC. If an inc falls on Row 3 of Stripes patt, work incs using MC.

Row 5: K1, [m1, k1] 8 times, k1 – 8 sts inc'd, 18 sts.

Rows 6-12: Cont in Stripes patt as est'd to end.

Row 13: K1, [m1, k1] 16 times, k1 – 16 sts inc'd, 34 sts.

Rows 10-28: Cont in Stripes patt as est'd to end.

Row 29: K1, [m1, k1] 32 times – 32 sts inc'd, 66 sts.

Rows 30-60: Cont as est'd to end.

Row 61: K1, [m1, k1] 64 times, k1, 64 sts inc'd, 130 sts.

Rows 62-124: Cont in Stripes patt as est'd to end.

Row 125: With MC, k1, [m1, k1] 128 times, m1, k1 – 129 sts inc'd, 259 sts. All inc's are now complete. There are 32 CC stripes. Break CC.

Row 126: With MC, purl to end.

Lace Section 1

Row 1 (RS): With MC, k1, work Row 1 of Lace patt to last st, k1. Patt will be repeated 31 times across each row.

Row 2 (WS): With MC, k1, work Row 2 of Lace patt to last st, k1.

Cont as est'd through Row 14 of Lace patt, then rep Rows 1-14 of Lace patt, 1 more time, then rep Rows 1-10, 1 more time. Break MC. Join CC.

Garter Band Section 1

Row 1 (RS): Knit to end.

Row 2 (WS): Knit to end.

Rep Rows 1-2, 2 more times. Break CC. Join MC.

Lace Section 2

Work as for Lace Section 1.

Garter Band Section 2

Work as for Garter Band Section 1.

Knit, Relax, Smile, Repeat!

2019 © Universal Yarn, Inc.

All rights reserved.

www.universalyarn.com

This pattern may not be reproduced for business, trade or sale.

Lace Section 3

Work as for Lace Section 1. Break MC.

With CC and larger ndl, bind off all sts loosely using the I-cord method.

FINISHING

Weave in ends but do not trim. Block, stretching to enhance lace. Once piece is fully dry, trim ends close to work.

Top Edge

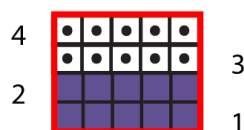
With RS facing and beg at right tip, using larger ndl and MC, pick up and knit 264 (approx. 1 st for every other row) sts evenly along top edge of Shawl. Knit 3 rows. Loosely bind off all sts kwise.

Abbreviations

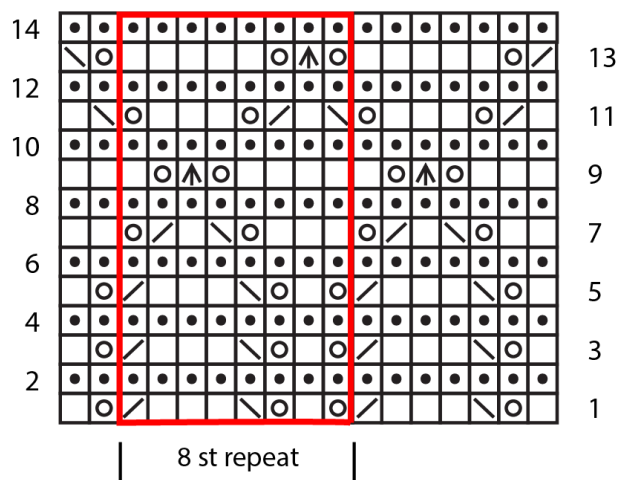
approx.	approximately
beg	begin(ning)
CC	contrast color
cont	continue
est'd	established
inc('d)	increase(d)
k	knit
k2tog	knit 2 stitches together (1 st dec'd)
kwise	knitwise
m1	insert left needle from front to back under horizontal strand of yarn lying between st just worked and next st, knit or purl this st through the back loop (1 st inc'd)
MC	main color
ndl	needle
p	purl
patt	pattern
pssso	pass slipped stitch(es) over
rep	repeat
RS	right side
sl	slip
ssk	slip next 2 sts individually knitwise, slip them back to left needle in this position, knit them together through the back loops (1 st dec'd)
st(s)	stitch(es)
tbl	through the back loop(s)

WS wrong side
yo yarn over

Stripes



Lace



Key

	with CC, knit on RS, purl on WS
	with MC, knit on RS, purl on WS
	with MC, purl on RS, knit on WS
	with MC, yo
	with MC, ssk
	with MC, k2tog
	with MC, sl 2-k1-p2sso
	pattern repeat

Knit, Relax, Smile, Repeat!

2019 © Universal Yarn, Inc.
All rights reserved.
www.universalyarn.com

This pattern may not be reproduced for business, trade or sale.