



Pattern Collection: Accessories



Cell Block Cowl

Designed by Universal Yarn Design Team

SIZES

One

FINISHED MEASUREMENTS

Circumference: 67"

Width: 9"

MATERIALS

Universal Yarn Adore (55% superwash merino, 45% anti-pilling acrylic; 100 g/273 yds)

- 126 Raisin – 2 skeins (MC)

Universal Yarn Adore Colors (55% superwash merino, 45% anti-pilling acrylic; 100 g/273 yds)

- 201 Peony Print – 2 skeins (CC)

Needles: US Size 5 (3.75 mm) 16" circular *or size needed to obtain gauge*

Notions: Stitch marker, tapestry needle, cable needle

GAUGE

24 sts x 26 rows = 4" in Cell Block patt

Save time, check your gauge.

Knit. Relax. Smile. Repeat!

2019 © Universal Yarn, Inc.

All rights reserved.

www.universalyarn.com

This pattern may not be reproduced for business, trade or sale.

PATTERN NOTES

Slipped stitches and simple cable crosses form the captivating texture on this cowl. The pattern creates unique shapes that appear similar to biological cell blocks. It's so beautiful how stitches made with yarn can echo lines found in nature!

This cowl is knit in the round in a tube. Then, the ends of the tube are seamed together.

STITCH GUIDE

2x2 Left Cross (LC): Sl next 2 sts to cn and hold in front, k2 from left ndl, k2 from cn.

2x2 Right Cross (RC): Sl next 2 sts to cn and hold in back, k2 from left ndl, k2 from cn.

Cell Block

(multiple of 12 sts)

Rnd 1: With MC, * k2, 2x2 LC, 2x2 RC, k2; rep from * to end.

Rnd 2: With MC, knit to end.

Rnd 3: With CC, * k2, sl 2 pwise wyib, k4, sl 2 pwise wyib, k2; rep from * to end.

Rnd 4: Rep Rnd 3.

Rnd 5: With MC, * 2x2 RC, k4, 2x2 LC; rep from * to end.

Rnd 6: With MC, knit to end.

Rnds 7-8: Rep Rnds 3-4.

Rep Rnds 1-8 for patt.

COWL

With MC, cast on 108 sts. PM and join to knit in the rnd, being careful not to twist. Work Rnds 1-8 of Cell Block patt, 55 times. Patt will be repeated 9 times across each rnd. With MC, knit 1 rnd. Bind off all sts.

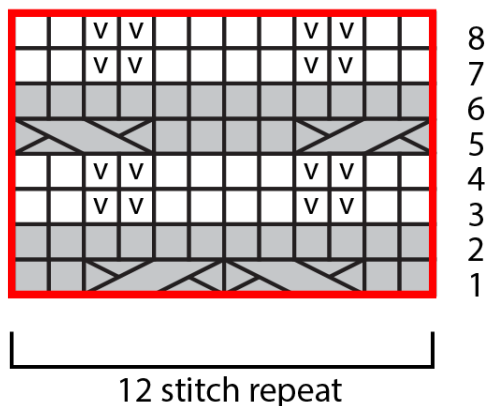
FINISHING

Block to measurements and weave in ends. Sew ends of tube together.

Abbreviations

CC	contrast color
cn	cable needle
k	knit
MC	main color
ndl	needle
patt	pattern
pm	place marker
pwise	purlwise
ndl	needle
rep	repeat
rnd	round
sl	slip
st(s)	stitch(es)
wyib	with yarn held in back

Cell Block



Key

	pattern repeat
	with MC, knit
	with CC, knit
	with CC, sl 1 pwise wyib
	with MC, 2x2 LC
	with MC, 2x2 RC

Knit. Relax. Smile. Repeat!

2019 © Universal Yarn, Inc.

All rights reserved.

www.universalyarn.com

This pattern may not be reproduced for business, trade or sale.