



## Pattern Collection: Accessories



### **Bias Mosaic Scarf**

Designed by Amy Gunderson

### **FINISHED MEASUREMENTS**

**Width:** 5½"

**Length:** 58" (not including fringe)

### **MATERIALS**

**Universal Yarn *Deluxe Worsted Tweed Superwash*** (90% superwash wool, 7% acrylic, 3% viscose; 100g/218 yds)

- 908 Navy (MC) – 1 ball
- 913 Smoke (CC1) – 1 ball
- 904 Olive (CC2) – 1 ball

**Needles:** US Size 9 (5.5 mm)  
straight or size needed to obtain gauge

**Notions:** Tapestry needle, US Size I (5.5 mm) crochet hook (for attaching fringe)

### **GAUGE**

16 sts x 30 rows = 4" in mosaic pattern

**Save time, check your gauge**

*Knit, Relax, Smile, Repeat!*

2016 © Universal Yarn, Inc.

All rights reserved.

[www.universalyarn.com](http://www.universalyarn.com)

This pattern may not be reproduced for business, trade or sale.

## PATTERN NOTES

This scarf is knit on the bias.

Slip all stitches purlwise with yarn held to the WS of the work.

**Edge Stitches:** On RS rows, knit the first and last stitch of every row. On WS rows, slip the first and last stitch of every row.

### How to Read the Chart:

Only one color is used per row. The color shown in the first stitch of any given row is the color that will be used for that row.

On RS rows, knit all stitches in the color you're working with and slip the stitches that are not in that color. On WS rows, do the exact same thing – knit the stitches in the color you're working with and slip the stitches in the other color.

Always work 2 rows in the same color – a stitch will never change color on the WS row.

Leave unused colors hanging at the side of the work except for CC2, which you should cut after every row 78 of the chart.

## SCARF

With MC, cast on 3 sts.

**Set-up row (WS):** Sl 1, k1, sl 1.

### Increase Section

**Row 1:** K1, work Row 1 of chart to last st, k1 – 5 sts.

**Row 2:** Sl 1, work Row 2 of chart to last st, sl 1.

**Rows 3-34:** Follow Rows 3-34 of chart – 35 sts.

### Even Section

Work Rows 35-116, then rep Rows 65-116, 5 more times. Work Rows 115-116.

### Decrease Section

Work Rows 117-150 – 5 sts rem.

**Next row:** With MC, k1, k3tog, k1. Bind off rem 3 sts.

## FINISHING

Block scarf lightly. Weave in ends.

## Fringe

Cut 54, 10" pieces of CC3. Holding in groups of 3, attach each group of fringe to every other slipped stitch edge along each edge of scarf using crochet hook. Trim fringe evenly.

## Abbreviations

<b>CC</b>	contrast color
<b>cont</b>	continue
<b>dec('d)</b>	decrease(d)
<b>inc('d)</b>	increase(d)
<b>k</b>	knit
<b>k2tog</b>	knit 2 stitches together (1 st dec'd)
<b>k3tog</b>	knit 3 stitches together (2 sts dec'd)
<b>m</b>	marker
<b>m1</b>	insert left needle from front to back under horizontal strand of yarn lying between st just worked and next st, knit or purl this st through the back loop (1 st inc'd)
<b>MC</b>	main color
<b>ndl</b>	needle
<b>patt</b>	pattern
<b>p</b>	purl
<b>pm</b>	place marker
<b>rem</b>	remain(ing)
<b>rep</b>	repeat
<b>RS</b>	right side
<b>sl</b>	slip
<b>ssk</b>	slip next 2 sts individually knitwise, slip them back to left needle in this position, knit them together through the back loops (1 st dec'd)
<b>st(s)</b>	stitch(es)
<b>WS</b>	wrong side

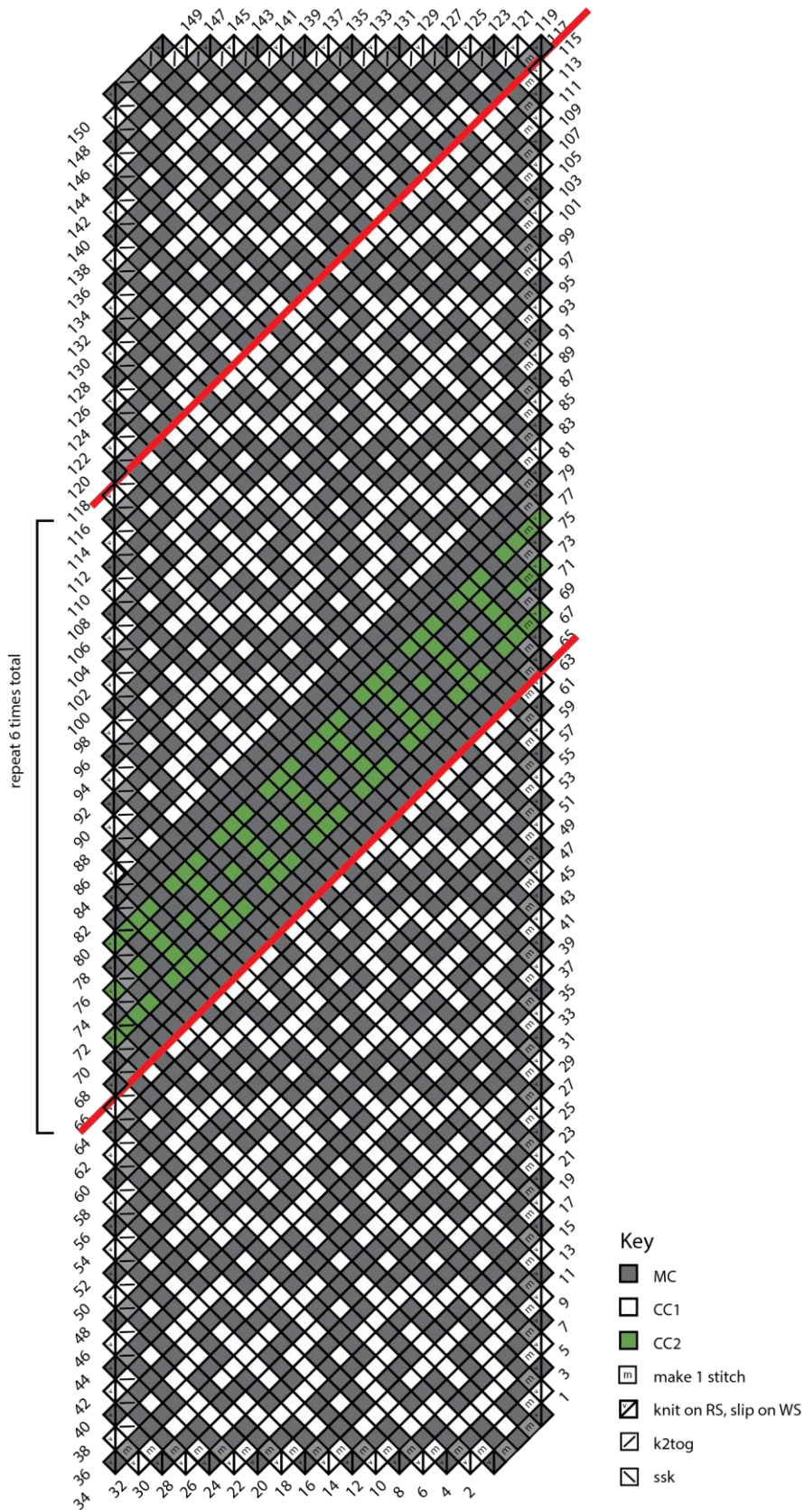
*Knit. Relax. Smile. Repeat!*

2016 © Universal Yarn, Inc.

All rights reserved.

[www.universalyarn.com](http://www.universalyarn.com)

This pattern may not be reproduced for business, trade or sale.



*Knit, Relax, Smile, Repeat!*

2016 © Universal Yarn, Inc.

All rights reserved.

[www.universalyarn.com](http://www.universalyarn.com)

This pattern may not be reproduced for business, trade or sale.