

Celebrate Autumn Flora

with the Deluxe Worsted Family





Autumn Leaves Cap

Designed by Amy Gunderson

SIZE

Adult, one size fits most

FINISHED MEASUREMENTS

Brim Circumference: 18", unstretched

Height: 11"

Universal Yarn *Deluxe Worsted*
(100% wool; 100g/220 yds)

- 71601 Blue Ombre – 1 ball (A)
- 12501 Oatmeal Heather – 1 ball (B)
- 3649 Forrest Green – 1 ball (C)
- 41138 Brown Sugar – 1 ball (D)
- 91477 Red Oak – 1 ball (E)
- 12188 Heather – 1 ball (F)
- 12180 Eggplant – 1 ball (G)
- 12282 Hunter Green – 1 ball (H)
- 12181 Bronze Brown – 1 ball (I)

Needles: US Size 8 (5 mm) 16" circular needle, set of dpn or size needed to obtain gauge

Notions: Stitch marker, tapestry ndl

GAUGE

20 sts x 21 rows = 4" in stranded knitting

Save time, check your gauge.

PATTERN NOTES

When decreasing crown, switch to dpns when you have too few sts for your circular needle.

HAT

Brim

With cir ndl, cast on 108 sts, place marker, and join to work in the rnd.

Rnd 1: * K2, p2; rep from * to end. Rep this rnd until Brim measures 2" from cast-on edge.

Hat Body

Work Rnds 1-36 of Autumn Leaves chart. Chart will be repeated 6 times across hat.

Shape Crown

Remove beg of rnd marker, slip first st, place marker for new beg of rnd.

Work rnds 1-2 of Crown chart – 96 sts rem.

Work rnds 3-4 of Crown chart – 84 sts rem.

Work rnds 5-6 of Crown chart – 72 sts rem.

Work rnd 7 of Crown chart – 60 sts rem.

Work rnd 8 of Crown chart – 48 sts rem.

Work rnd 9 of Crown chart – 36 sts rem.

Work rnd 10 of Crown chart – 24 sts rem.

Next rnd: With A, k2tog across rnd – 12 sts rem.

Break yarn, thread through tapestry ndl, and pass tail through rem sts.

FINISHING

Weave in ends. Block.





Stranded Seed Pillow

Designed by Amy Gunderson

FINISHED MEASUREMENTS

(all measurements taken after stuffing)

Length: 18"

Circumference at widest point: 26"

MATERIALS

Universal Yarn *Deluxe Chunky*

(100% wool; 100g/120 yds)

- 91901 Oatmeal Heather – 2 balls (MC)
- 3749 Forest – 1 ball (CC)

Needles: US Size 9 (5.5 mm)

24" circular needle, set of dpns
or size needed to obtain gauge

Notions: Cable needle, tapestry ndl,
polyester stuffing

GAUGE

19 sts x 21 rows = 4" in stranded
knitting

Save time, check your gauge.

STITCH GUIDE

2x2 Right Cross (RC): Slip next 2 sts to cable needle and hold in back, k2, k2 from cable needle.

2x2 Left Cross (LC): Slip next 2 sts to cable needle and hold in front, k2, k2 from cable needle.

PILLOW

With MC and dpns, cast on 22 sts. Place marker and join to work in the rnd.

Set-up rnd: * K1 CC, kfb MC, k1 CC, place marker (pm), k1 MC, k1CC, [kfb MC] 4 times, k1 CC, k1 MC; rep from * once more – 32 sts.

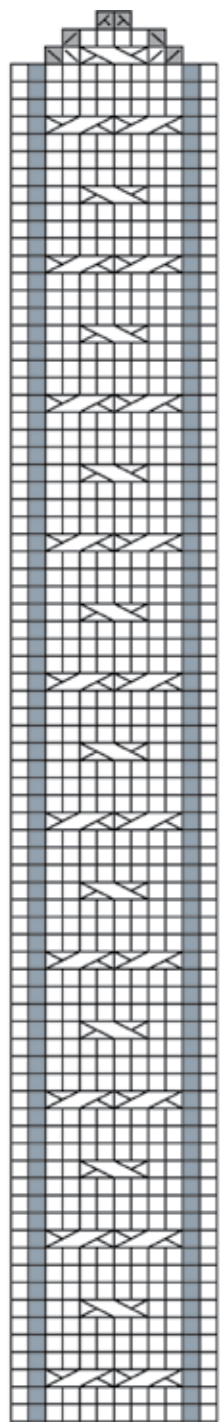
Work Rnds 1-75 of Stranded Seed chart .
Fill pillow with polyester stuffing. Work rnds 76-78 of chart. Add more stuffing. Work rnds 79-80 of chart– 12 sts rem.

Next rnd: Slip last (CC) st to beg of rnd. [K3tog, sssk] twice – 4 sts rem. Add additional stuffing if necessary to fill out pillow. Break yarn, leaving 8" tail. Thread tail through tapestry ndl, pass through rem sts twice, pulling taut.

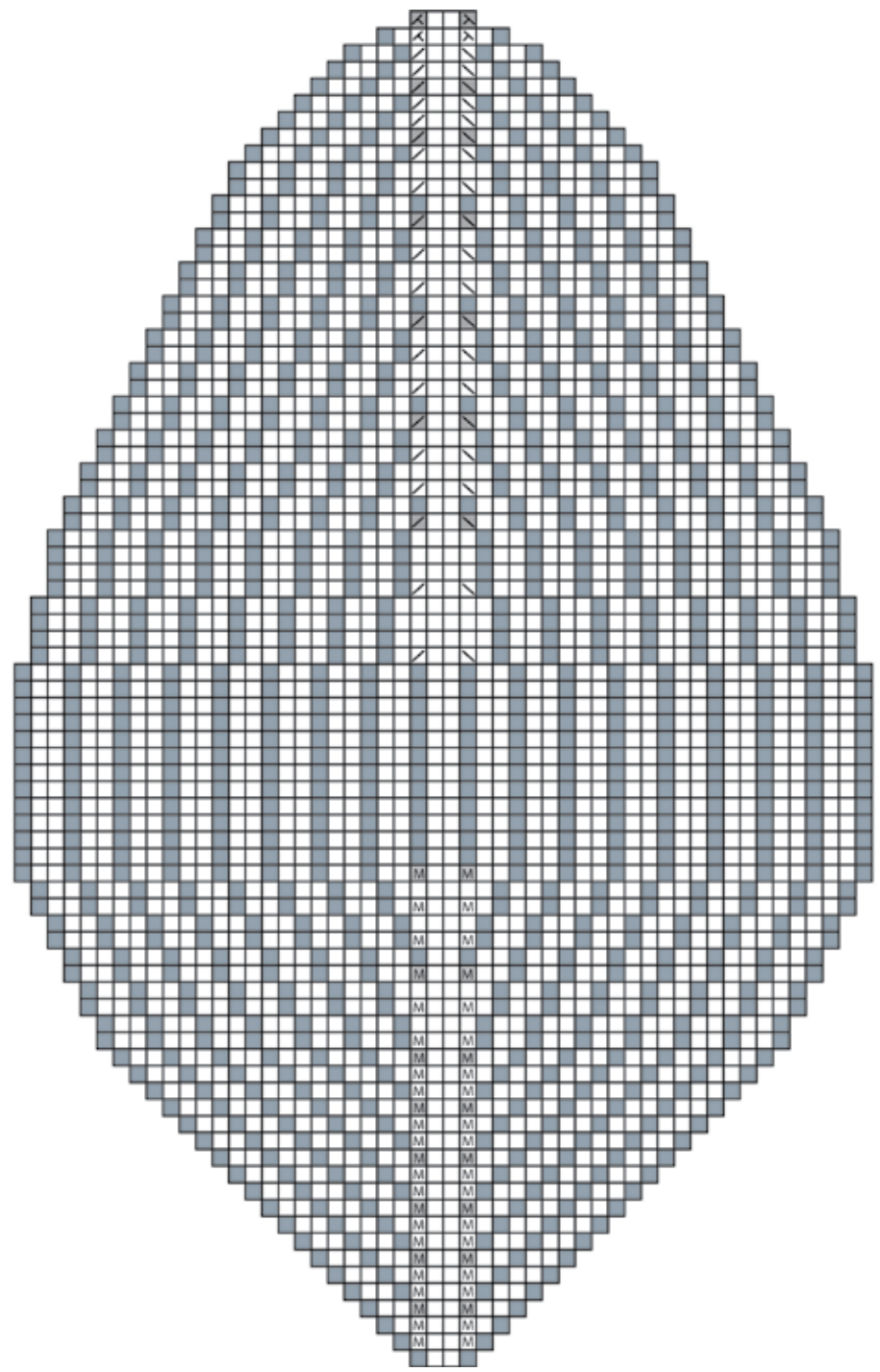
FINISHING

Weave in ends.





- Key
- knit with MC
 - knit with CC
 - make one
 - ssk
 - k2tog
 - sssk
 - k3tog
 - 2x2 LC
 - 2x2 RC



- 80
- 79
- 78
- 77
- 76
- 75
- 74
- 73
- 72
- 71
- 70
- 69
- 68
- 67
- 66
- 65
- 64
- 63
- 62
- 61
- 60
- 59
- 58
- 57
- 56
- 55
- 54
- 53
- 52
- 51
- 50
- 49
- 48
- 47
- 46
- 45
- 44
- 43
- 42
- 41
- 40
- 39
- 38
- 37
- 36
- 35
- 34
- 33
- 32
- 31
- 30
- 29
- 28
- 27
- 26
- 25
- 24
- 23
- 22
- 21
- 20
- 19
- 18
- 17
- 16
- 15
- 14
- 13
- 12
- 11
- 10
- 9
- 8
- 7
- 6
- 5
- 4
- 3
- 2
- 1

2012 © Universal Yarn, Inc.
 All rights reserved.
www.universalyarn.com

This pattern may not be reproduced for business, trade or sale.





Poplar Beret

Designed by Mary Catherine Black

FINISHED MEASUREMENTS

18" hat to fit 20-22" head

MATERIALS

Universal Yarn Deluxe Worsted
(100% wool; 100g/ 220 yds)

- 12182 Gold spice – 1 ball (A)

Universal Yarn Deluxe Worsted LP
(100% wool; 100g/ 220 yds)

- 06 Harvest – 1 ball (B)

Needles: US Size 6 (4 mm) dpns
or size needed to obtain gauge

Notions: Tapestry ndl, cable ndl

GAUGE

20 sts x 24 rows = 4" in St st

Save time, check your gauge.

STITCH GUIDE

C4F: Slip next 2 sts to cable ndl and hold in front, k2, k2 from cable ndl.

Poplar Lace (mult of 17 sts)

Rnd 1: K1, C4F, k5, k2tog, yo, k5.

Rnd 2: K10, k2tog, yo, k5.

Rnd 3: as rnd 2.

Rnd 4: as rnd 1.

Rnd 5: K9, k2tog, yo, k1, yo, ssk, k3.

Rnd 6: K8, k2tog, yo, k3, yo, ssk, k2.

Rnd 7: k1, C4F, k2, k2tog, yo, k5, yo, ssk, k1.

Rnd 8: K6, k2tog, yo, k7, yo, ssk.

Rnd 9: as rnd 8.

Rnd 10: K1, C4F, k1, k2tog, yo, k7, yo, ssk.

Rnd 11: K9, k2tog, yo, k1, yo, ssk, k3.

Rnd 12: K10, k2tog, yo, k5.

Rnd 13: K1, C4F, k12.

HAT

With color B, cast on 91 sts, pm and join in the rnd. Work in St st for 1".

Next Rnd: *K13, m1r, rep from * to end of round (98 sts).

Next Rnd: *K24, m1r, rep from * to last 2 sts, k2. (102 sts).

Switch to color A. Using either the chart or the written directions, work 1 repeat of poplar lace st, repeating it 6 times across each row.

Next 2 rnds: Knit.

Next rnd: *K1, C4F, k12; rep from * to end of rnd. Work these 3 rounds, two more times.

Knit 2 rnds.

Crown

Using either the chart or the written directions, work crown as follows:

Rnd 1: *K1, C4F, k10, k2tog. Rep from * around. (96 sts)

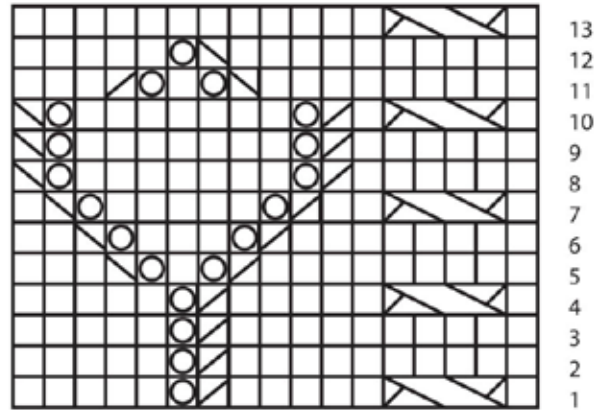
Rnd 2: *K14, k2tog. Rep from * around. (90 sts).

Rnd 3: *K13, k2tog. Rep from * around. (84 sts).



Rnd 4: *K1, C4F, k7, k2tog. Rep from * around. (78 sts).
Rnd 5: *K11, k2tog. Rep from * around. (72 sts).
Rnd 6: *K10, k2tog. Rep from * around. (66 sts).
Rnd 7: *K1, C4F, k4, k2tog. Rep from * around. (60 sts).
Rnd 8: *K8, k2tog. Rep from * around. (54 sts).
Rnd 9: *K7, K2tog. Rep from * around. (48 sts).
Rnd 10: *K1, C4F, k1, k2tog. Rep from * around. (42 sts).
Rnd 11: *K5, k2tog. Rep from * around. (36 sts).
Rnd 12: *K4, k2tog. Rep from * around. (30 sts).
Rnd 13: *K3, k2tog. Rep from * around. (24 sts).
Rnd 14: *K2, k2tog. Rep from * around. (18 sts).
Rnd 15: *K1, k2tog. Rep from * around. (12 sts).
Rnd 16: *K2tog. Rep from * around.
 Break yarn, leaving a 6" tail. Thread yarn trough rem 6 sts, pull tight to close top of hat.

Poplar Lace

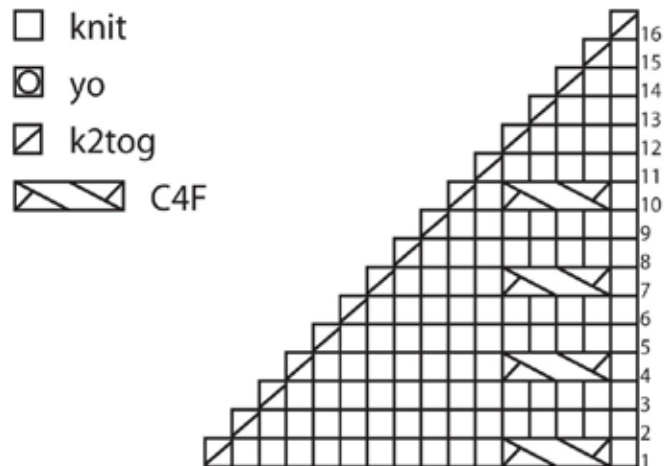


- knit
- yo
- k2tog
- ssk
- C4F

FINISHING

Weave in ends, block over a shape to encourage the beret crease.

Crown



- knit
- yo
- k2tog
- C4F





Wraparound Leaves Beret

Designed by Amy Gunderson

SIZE
Adult

FINISHED MEASUREMENTS
Brim Circumference: 19", unstretched
Height: 10½"

MATERIALS
Universal Yarn *Deluxe Worsted*
(100% wool; 100g/220 yds)
• 12176 Teal Viper – 1 ball (MC)
• 41138 Brown Sugar – 1 ball (CC)
Needles: US Size 8 (5 mm)
24" circular needle, set of dpn
or size needed to obtain gauge
US Size 6 (4 mm) 16" circular needle
Notions: Stitch markers, tapestry ndl

GAUGE

20 sts x 21 rows = 4" in stranded knitting
using larger needle
Save time, check your gauge.

SPECIAL STITCHES

Right Twist (RT): K2tog, do not slip stitches from LH ndl, knit first st again, slip both sts from ndl.

PATTERN NOTES

There are several long floats in the Wraparound chart. It is recommended that for floats of color more than 5 sts long, to twist the strands of color, "trapping" the unused color in place. This will prevent the long floats from snagging.

BERET

Brim

With MC and smaller ndl, cast on 96 sts. Place marker, (pm) and join to work in the rnd.

Rnds 1-2: * K2, p2; rep from * to end.

Rnd 3: * RT, p2; rep from * to end.

Rnds 4-5: * K2, p2; rep from * to end.

Rnds 6-7: * P2, k2; rep from * to end.

Rnd 8: * P2, RT; rep from * to end.

Rnds 9-10: * P2, k2; rep from * to end.

Inc Rnd: * Kfb, k1; rep from * to end – 144 sts.

Hat Body

Rnd 1: Work across 72 sts of chart A, row 1, pm, work across row 1 of chart B to end; chart B will be repeated 3 times.

Rnd 2: Work in patt to m, sl m, work in patt to end. Cont in patt through row 48 of chart – 24 sts rem.

Next rnd: [K2tog] across rnd – 12 sts rem.

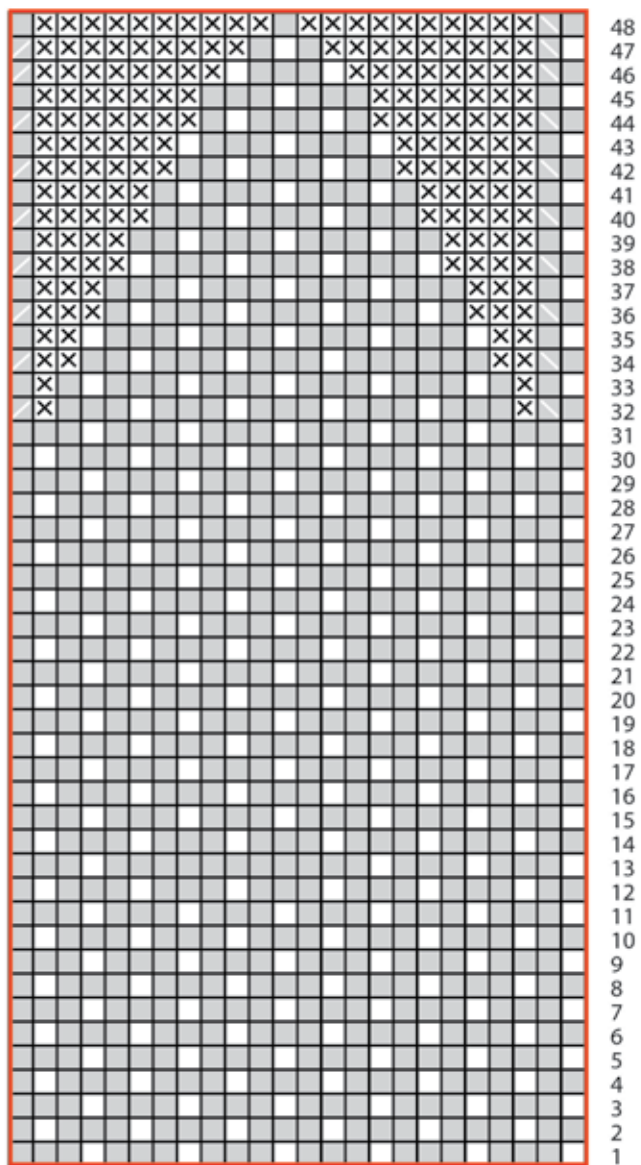
FINISHING

Break yarn, leaving 8" tail. Thread through rem lives sts and fasten off.

Weave in ends. Wet block hat to even out stranded knitting.



Chart B

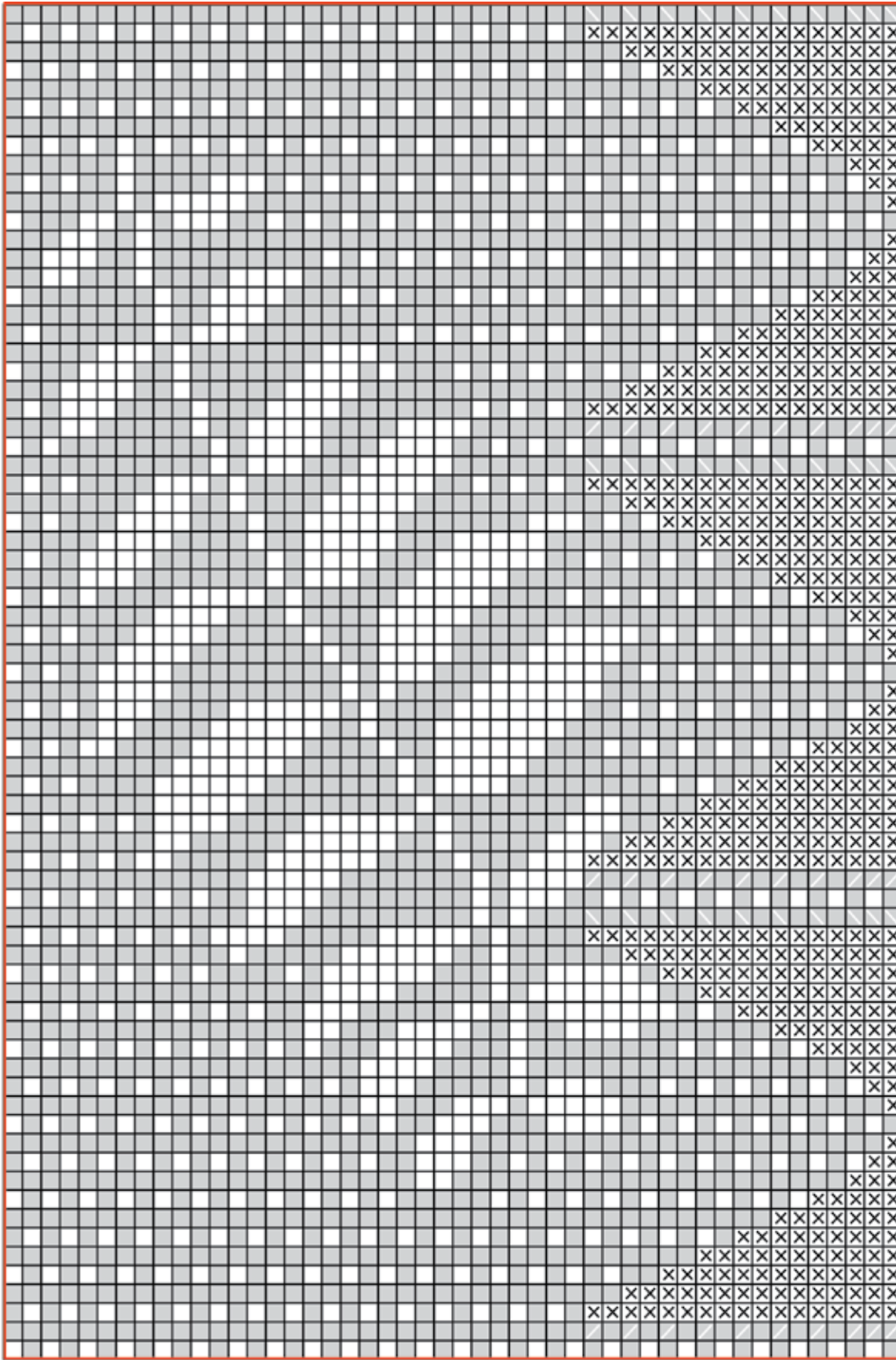


Key

- with CC, knit
- with MC, knit
- ssk
- k2tog
- no stitch
- patt rep

Wraparound Leaves Beret (cont)

Chart A



48
47
46
45
44
43
42
41
40
39
38
37
36
35
34
33
32
31
30
29
28
27
26
25
24
23
22
21
20
19
18
17
16
15
14
13
12
11
10
9
8
7
6
5
4
3
2
1



Wraparound Leaves Mitts

Designed by Amy Gunderson

SIZE

Adult Medium

FINISHED MEASUREMENTS

Palm Circumference: 8"

Length: 7"

MATERIALS

Universal Yarn Deluxe Worsted

(100% wool; 100g/220 yds)

- 12176 Teal Viper – 1 ball (MC)
- 41138 Brown Sugar – 1 ball (CC)

Needles: US Size 8 (5 mm) set of dpns
or size needed to obtain gauge

US Size 6 (4 mm) set of dpns

Notions: Stitch markers, tapestry ndl

GAUGE

20 sts x 21 rows = 4" in stranded knitting
using larger needle

Save time, check your gauge.

SPECIAL STITCHES

Right Twist (RT): K2tog, do not slip
stitches from LH ndl, knit first st again, slip
both sts from ndl.

RIGHT MITT

With MC, cast on 40 sts. Place marker
(pm) and join to work in the rnd.

Cuff

Rnds 1-2: * K2, p2; rep from * to end.

Rnd 3: * RT, p2; rep from * to end.

Rnds 4-5: * K2, p2; rep from * to end.

Rnds 6-7: * P2, k2; rep from * to end.

Rnd 8: * P2, RT; rep from * to end.

Rnds 9-10: * P2, k2; rep from * to end.

Rnds 11-15: Rep rnds 1-5.

Hand

Work rnds 1-2 of chart for Right Hand,
changing colors as indicated.

Rnd 3: Work to last 9 sts, pm, k1 with CC,
pm, work to end.

Rnd 4: Work to m, sl m, work rnd 4 of
Thumb Gusset chart, sl m, work to end – 2
sts inc'd.

Work rnds 5-11 of charts – 9 sts total bet
markers for thumb.

Rnd 12: Work to m, remove m, slip thumb
sts to waste yarn, cast on 1 st using MC
and backward lp method, remove m, work
to end – 40 sts rem.

Work Rnds 13-22 of Right Hand chart.

Break CC.

Knit 1 rnd.

Next rnd: * K1, p1; rep from * to end.

Rep this rnd 4 more times. Bind off all sts
in patt.

Thumb

Beg at center of thumb gap, pick up and
knit 1 st with CC, 1 st with MC, cont in
patt across 9 held sts following rnd 12 of
Thumb Gusset chart, pick up and knit 1
with MC – 12 sts.

Work rnds 13-16 of chart. Break CC.

Next rnd: * K1, p1; rep from * to end.

Rep this rnd once more. Bind off all sts in
patt.



Wraparound Leaves Mitts (cont)

LEFT MITT

With MC, cast on 40 sts. Place marker (pm) and join to work in the rnd.

Cuff

Work as for Right Mitt.

Hand

Work rnds 1-2 of chart for Left Hand, changing colors as indicated.

Rnd 3: Work across 8 sts, pm, k1 with CC, pm, work to end.

Rnd 4: Work to m, sl m, work rnd 4 of Thumb Gusset chart, sl m, work to end – 2 sts inc'd.

Work rnds 5-11 of charts – 9 sts total bet markers for thumb.

Rnd 12: Work to m, remove m, slip thumb sts to waste yarn, cast on 1 st using MC and backward lp method, remove m, work to end – 40 sts rem.

Work Rnds 13-22 of Left Hand chart.

Break CC.

Knit 1 rnd.

Next rnd: * K1, p1; rep from * to end.

Rep this rnd 4 more times. Bind off all sts in patt.

Thumb

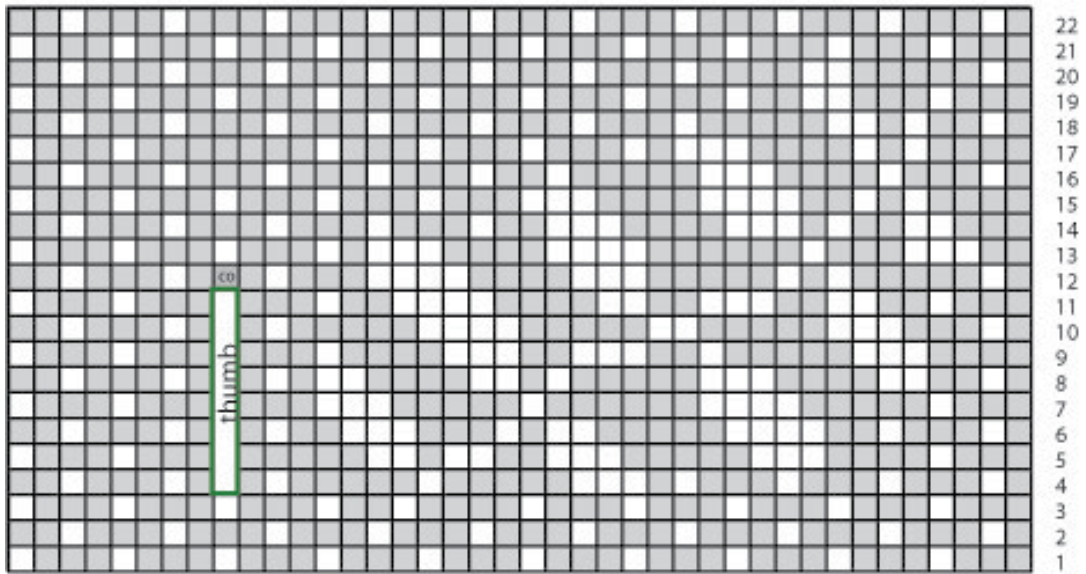
Work as for Right Mitt.

FINISHING

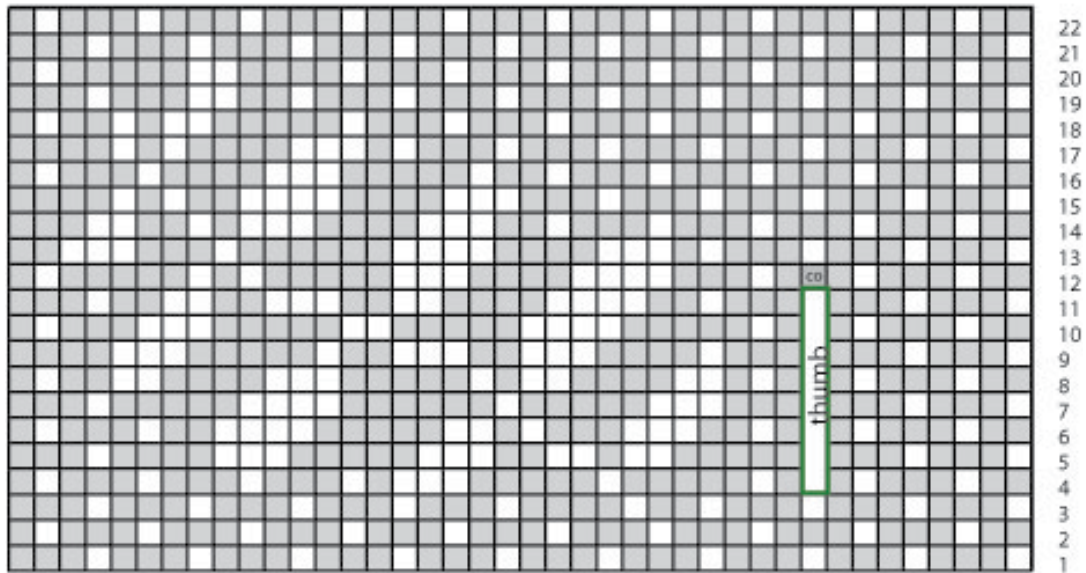
Weave in ends. Wet block mitts to even out stranded knitting pattern.



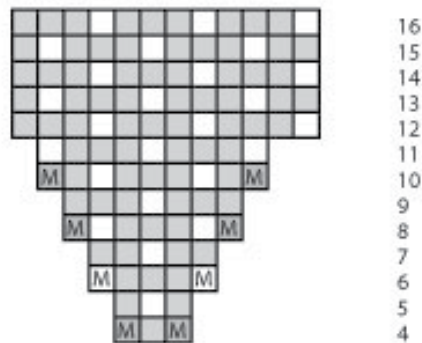
Right Hand



Left Hand



Thumb Gusset



Key

-  with CC, knit
-  with MC, knit
-  make one
-  cast on





Felted Leaf

Designed by Amy Gunderson

FINISHED MEASUREMENTS

(after felting)

Height: 6"

Width: 3¾"

MATERIALS

Universal Yarn *Deluxe Worsted* (100% wool; 100g/220 yds)

- 1 ball will make multiple felted leaves

Needles: US Size 8 (5 mm) straight needles *or size needed to obtain gauge*

Notions: Tapestry needle, glue, scrap yarn

GAUGE

18 sts x 24 rows = 4" in St st

Save time, check your gauge.

LEAF

Cast on 4 sts. Knit 8 rows.

Work rows 1-39 of Felted Leaf chart – 1 st rem.

Break yarn, pulling tail through last st, fasten off.

FINISHING

Do not weave in ends.

Felting

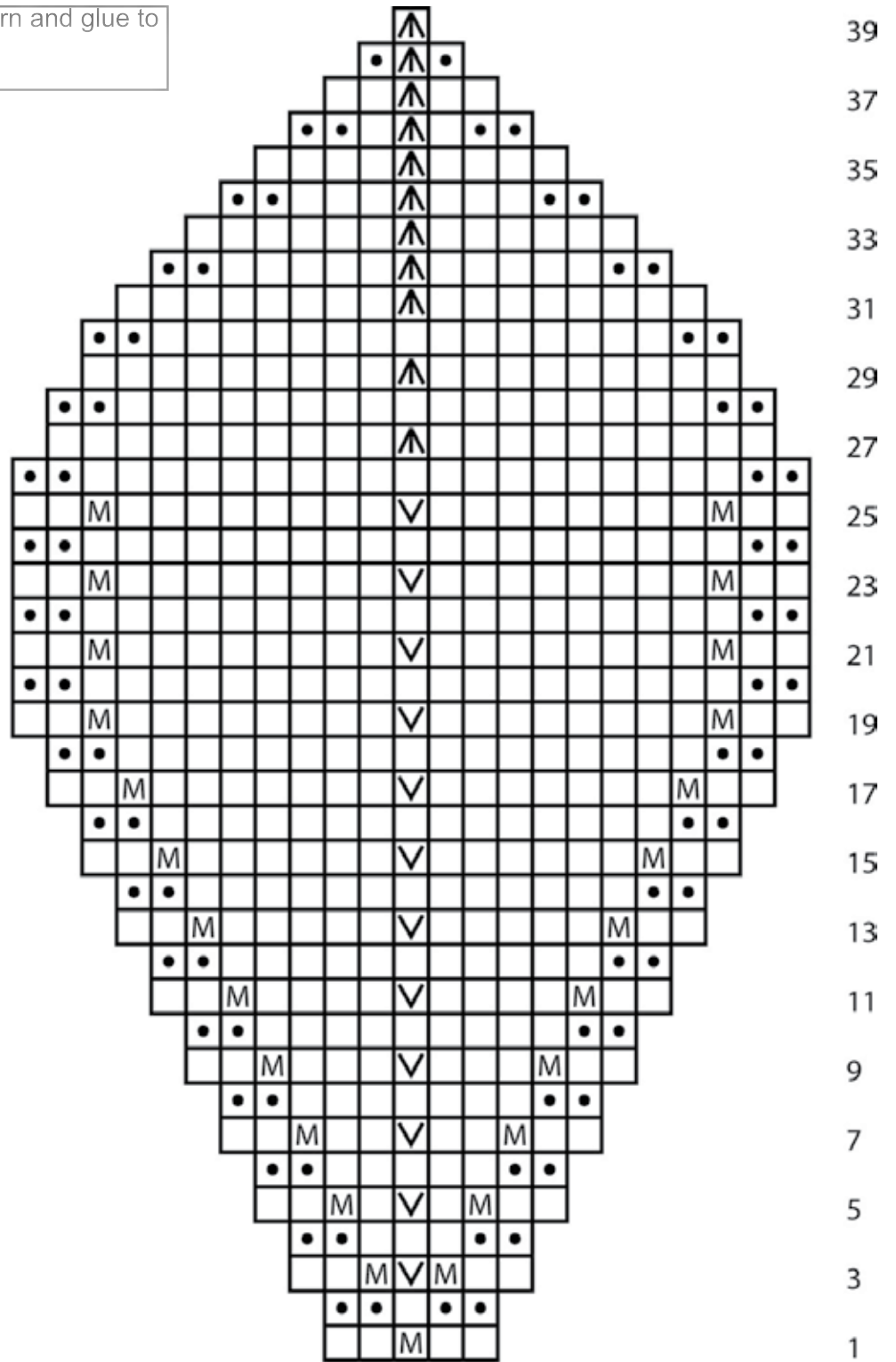
Place leaf or leaves into pillow case or lingerie bag and tie closed. Place pillow case into washing machine, add detergent, and agitate for 10 min using cool water and a normal cycle. Check leaves. If not fully felted, continue agitating, checking every 5 minutes, until they are fully felted. Let the wash cycle complete. Remove leaves from bag and allow to air dry, patting into shape if necessary.



Cut small pieces of scrap yarn and glue to leaf for veins.

Key

- knit on RS, purl on WS
- purl on RS, knit on WS
- sl 1 pwise wyib
- M make one
- sl 1-k2tog-ssso





Big Leaf Mittens

Designed by Amy Gunderson

FINISHED MEASUREMENTS

Palm Circumference: 8½ (9)

MATERIALS

Universal Yarn *Renew Wool*
(100 % wool; 100b/270 yds)

- 101 Sand – 1 ball (MC)
- 107 Cedar – 1 ball (CC1)
- 113 Garnet – 1 ball (CC2)

Needles: US Size 4 (3.5 mm) set of dpns
or size needed to obtain gauge (8½" size)
US Size 6 (4 mm) set of dpns
or size needed to obtain gauge (9" size)

Notions: 4 mm crochet hook, tapestry needle, smooth waste yarn

GAUGE

23 sts x 24 rows = 4" in stranded knitting
using smaller needle

21 sts x 22 rows = 4" in stranded knitting
using larger needle

Save time, check your gauge.

PATTERN NOTES

This pattern offers two different sizes. The only difference in the pattern for the two mitten sizes, is the size of needle you use. Both gauges produce a good fabric.

I-Cord: * K3, slide sts tp other end of ndl, pulling yarn taut behind work; rep from *.

RIGHT MITTEN

With smooth waste yarn and crochet hook, ch 60. With MC, beg a few chs in from one end, pick up and knit 48 sts. Place marker (pm) and join to work in the rnd.

Cuff

Rnd 1: * With CC1, k1, with MC, p1; rep from * to end.

Rep this rnd 9 more times.

Next rnd: With CC1, knit.

Next rnd: With CC1, purl.

Next rnd: With MC, knit.

Thumb Gusset

Next rnd: Work across first 27 sts of Right Mitten chart, row 1, pm, work row 1 of thumb chart, pm, work to end – 2 sts inc'd bet markers for thumb.

Next rnd: Work across first 27 sts of Right Mitten chart row 2, sl m, work row 2 of thumb chart to m, sl m, work to end.

Cont in patt, increasing bet markers for thumb as indicated by thumb chart, through row 17 of charts – 13 sts bet markers for thumb.

Main Mitten

Next row: Work next row of chart to m, remove m, sl 13 thumb sts to waste yarn, co 1 st using backward lp method and MC, work to end.



Work remainder of chart through row 41 – 12 sts rem. Break yarn, pass tail through rem live sts twice, pull taut, fasten off.

Thumb

Beg at center of thumb gap, pick up and knit 1 st with MC, 2 sts with CC1, work across 13 held sts in patt, pick up and knit 2 sts with CC1 – 18 sts. Place marker and join in the rnd.

Dec rnd: K1 with MC, k2tog with CC, work to last 2 sts, ssk – 16 sts rem.

Work even in patt until thumb measures 2½” from pick-up rnd.

Dec rnd: [K2tog with MC, ssk, with CC] 4 times – 8 sts rem.

Break yarn, pass through rem live sts, & pull taut.

FINISHING

Cuff Trim

Carefully unravel provisional cast-on, placing live sts on ndls.

Next rnd: With CC2, knit.

Bind off rnd: Cast on 3 sts, using knitted cast-on. * K2, k2tog tbl, slide sts to other end of ndl and place in your left hand; rep from * to last st. Work in i-cord for 2½”.

Bind off rem 3 sts.

Sew end of i-cord to base of i-cord cuff trim.

Weave in ends. Wet block mittens to even out colorwork.

LEFT MITTEN

Work as for Right mitten for cast-on and cuff.

Thumb Gusset

Next rnd: Work to last 3 sts of Left Mitten chart row 1, pm, work row 1 of thumb chart, pm, work to end – 2 sts inc'd bet markers for thumb.

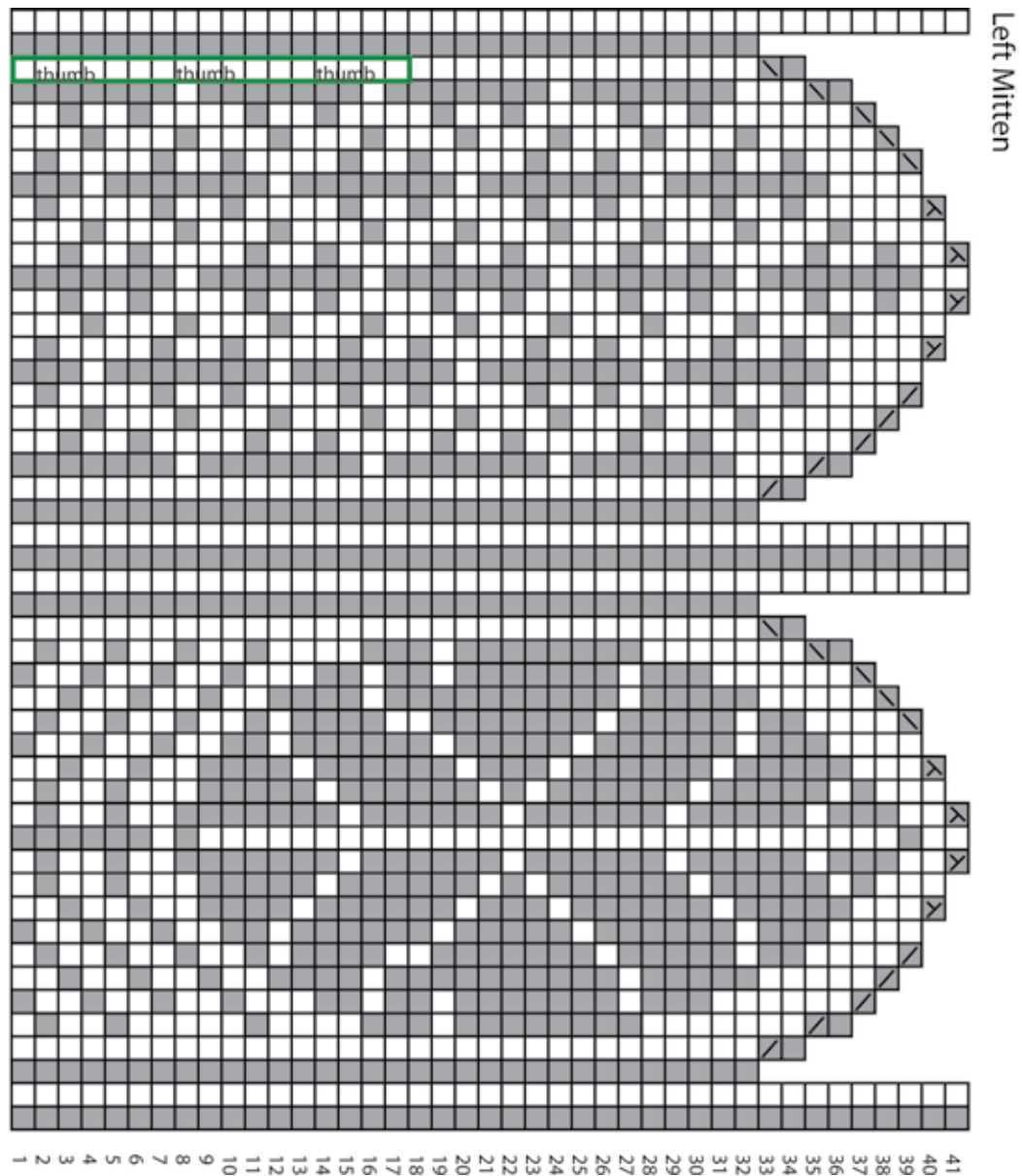
Next rnd: Work across Left Mitten chart row 2 to m, sl m, work row 2 of thumb chart to m, sl m, work to end.

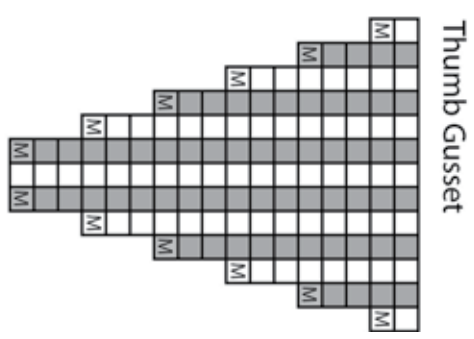
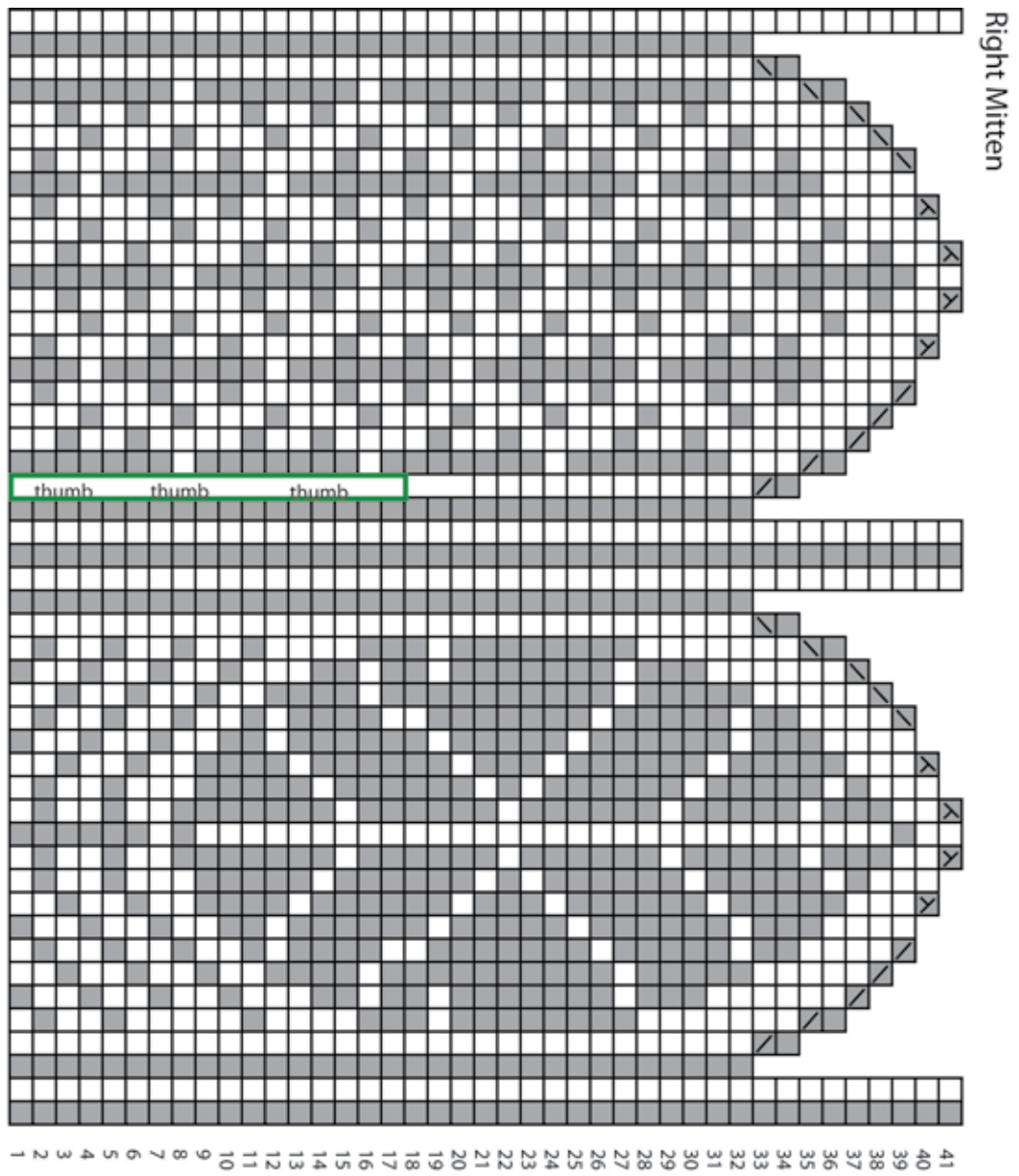
Cont in patt, increasing bet markers for thumb as indicated by thumb chart, through row 17 of charts – 13 sts bet markers for thumb.

Complete Left Mitten as for Right Mitten.



Big Leaf Mittens (cont)





- Key**
- with MC, knit
 - with CCI, knit
 - ssk
 - k2tog
 - sssk
 - k3tog





Sheaves of Wheat Reversible Scarf

Designed by Amy Gunderson

FINISHED MEASUREMENTS

Length: 70"

Width at widest point: 8"

Width at narrowest point: 3½"

MATERIALS

Universal Yarn *Deluxe Chunky*
(100% wool; 100g/120 yds)

- 3704 Gold Spice – 2 balls

Needles: US Size 10 (6 mm) straight needles *or size needed to obtain gauge*

Notions: Cable needle, tapestry needle, stitch holders or spare yarn

GAUGE

13 sts x 19 rows = 4" in St st

Save time, check your gauge.

PATTERN STITCHES

4/4 Left Ribbed Cross (LRC): Place next 4 sts on cable needle and hold in front, [k1, p1] twice, [k1, p1] twice from cable needle.

4/4 Right Ribbed Cross (RRC): Place next 4 sts on cable needle and hold in back, [k1, p1] twice, [k1, p1] twice from cable needle.

SCARF

Cast on 17 sts.

Work rows 1-32 of Chart A once. Work rows 33-40 of Chart A, 28 times, or until scarf measures 58" from cast-on edge, or until scarf is 12" less than desired length. Work rows 1-32 of Chart B.

Row 33: Work across 8 sts in patt, place these 8 sts on holder (1), work to end.

Work rows 34-40 of patt.

Row 41: Work to last 8 sts, place last 8 sts on holder (2).

Work rows 42-50 of chart – 16 sts rem.

Row 51: Work LRC, place rem 8 sts on holder (3).

Bind off 8 sts in patt.

Replace held sts (3) on ndl. With RS facing, work RRC. Bind off sts in patt.

Replace held sts (2) on ndl.

Next row (RS): [K1, p1] 4 times. Rep this row 6 more times. Work RRC. Bind off all sts in patt.

Replace held sts (1) on ndl.

Next row (WS): [K1, p1] 4 times. Rep this row 5 more times. Work LRC. Bind off all sts in patt.

FINISHING

Weave in ends. Block lightly.



Chart A

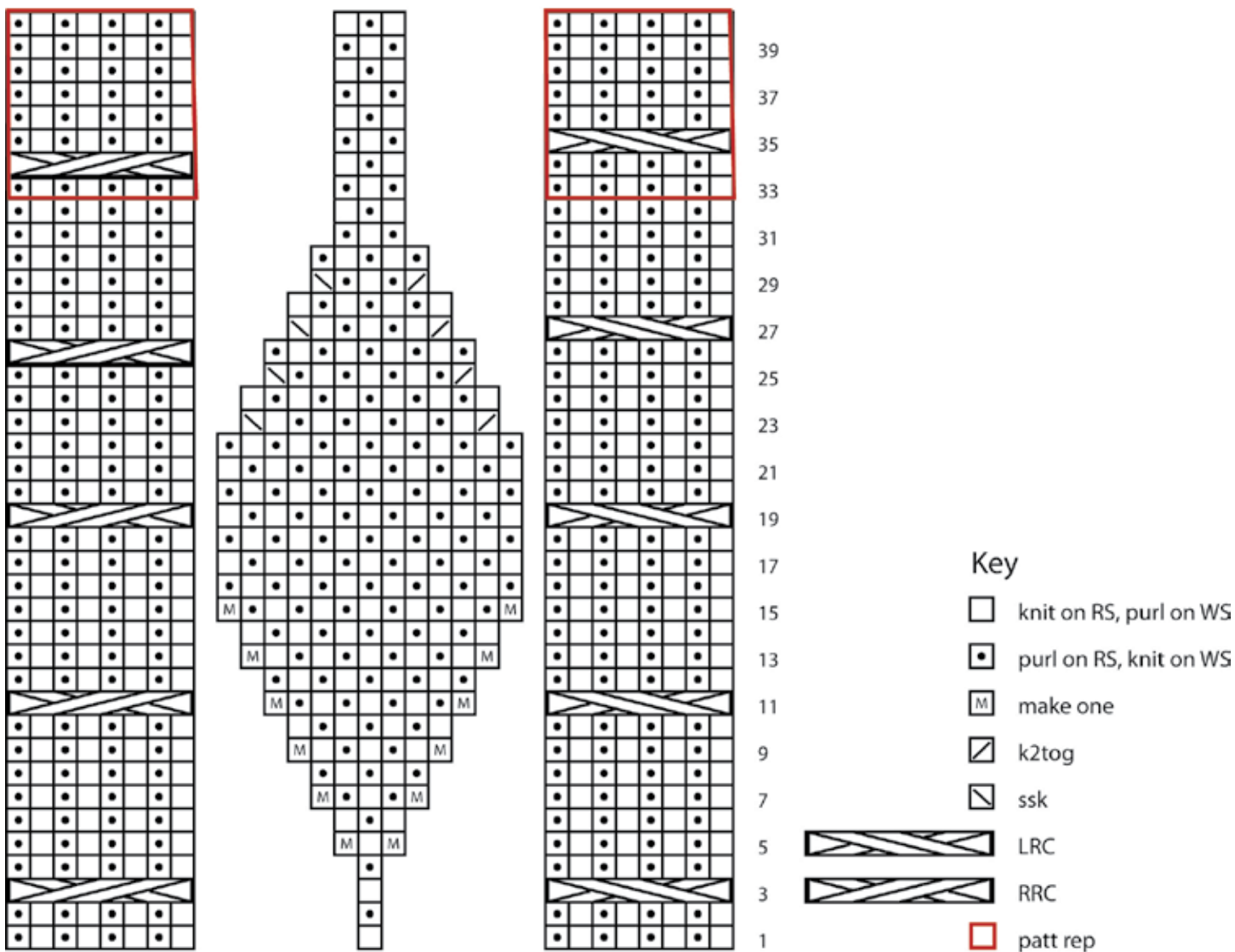


Chart B

