

PATTERN COLLECTION: ACCESSORIES



Yiasou!

Designed by Heather Hill

SIZE

Adult Medium

FINISHED MEASUREMENTS

Circumference: 20"

Depth: 7"

MATERIALS

Fibra Natura Dona (100% extra fine merino superwash; 50g/126 yds)

- 122 Seaport – 1 ball (MC)
- 101 Vanilla – 1 ball (CC)

Needles: US Size 7 (4.5 mm) 16" circular, set of dpns *or size needed to obtain gauge*

Notions: Stitch marker, tapestry needle

GAUGE

20 x 26 rows = 4" in St st

Save time, check your gauge.

Abbreviations

beg	begin(ning)
CC	contrast color
circ	circular
k	knit
k2tog	knit 2 stitches together (1 st dec'd)
MC	main color
patt	pattern
pm	place marker
rem	remain(ing)
rnd	round
st(s)	stitch(es)

Knit. Relax. Smile. Repeat!

2015 © Universal Yarn, Inc.
All rights reserved.
www.universalyarn.com

This pattern may not be reproduced for business, trade or sale.

PATTERN NOTES

This hat is worked in the round from the bottom up. Colors are changed using the Fair Isle method.

HAT

With circular needles and MC, cast on 96 sts. Being careful not to twist sts, PM and join to work in the rnd.

Brim

Rnds 1-8: * K2, p2; rep from * to end.

Hat Body

Knit 4 rnds

Establish Pattern

Rnds 1-12: Work Rows 1-12 of chart – patt will be repeated 12 times across each rnd. Break CC, cont using MC only.

Knit 9 rnds.

Decrease for Crown

Switch to double-pointed needles when yarn no longer fits on circular needles.

Rnd 1: * K10, k2tog; rep from * to end – 88 sts rem.

Rnd 2: Knit.

Rnd 3: * K9, k2tog; rep from * to end – 80 sts rem.

Rnd 4: Knit.

Rnd 5: * K8, k2tog; rep from * to end – 72 sts rem.

Rnd 6: * K7, k2tog; rep from * to end – 64 sts rem.

Rnd 7: * K6, k2tog; rep from * to end – 56 sts rem.

Rnd 8: * K5, k2tog; rep from * to end – 48 sts rem.

Rnd 9: * K4, k2tog; rep from * to end – 40 sts rem.

Rnd 10: * K3, k2tog; rep from * to end – 32 sts rem.

Rnd 11: * K2, k2tog; rep from * to end – 24 sts rem.

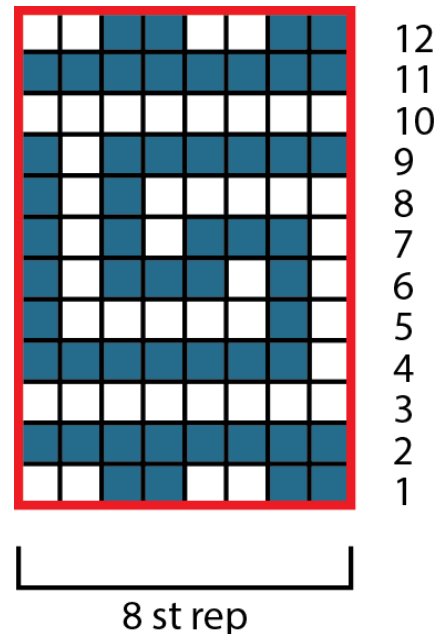
Rnd 12: * K1, k2tog; rep from * to end – 16 sts rem.

Rnd 13: * K2tog; rep from * to end – 8 sts rem.

Break yarn leaving 8" tail. Thread through remaining live sts, pull taut.

FINISHING

Weave in ends.



Key

 with MC, knit

 with CC, knit

 pattern repeat

Knit. Relax. Smile. Repeat!

2015 © Universal Yarn, Inc.

All rights reserved.

www.universalyarn.com

This pattern may not be reproduced for business, trade or sale.