



## Pattern Collection: Accessories



### **Willowwork Cowl**

Designed by Amy Gunderson

### **SIZE**

Small (Large)

Shown in Small size.

### **FINISHED MEASUREMENTS**

**Circumference:** 27½ (48¾)"

**Depth:** 13½"

### **MATERIALS**

**Universal Yarn *Deluxe Worsted*** (100% superwash wool; 100g/220 yds)

- 23503 Charcoal Heather (A) – 1 (2) skeins
- 15006 Spice Rustic (B) – 1 (2) skeins

**Needle:** US Size 8 (5 mm) 24 (32)" circular *or size needed to obtain gauge*

US Size 6 (4 mm) 24 (32)" circular

**Notions:** Tapestry needle, cable needle, stitch marker

### **GAUGE**

21 sts x 22 rows = 4" in Willowwork patt with larger ndl

**Save time, check your gauge.**

*Knit. Relax. Smile. Repeat!*

2019 © Universal Yarn, Inc.

All rights reserved.

[www.universalyarn.com](http://www.universalyarn.com)

This pattern may not be reproduced for business, trade or sale.

## PATTERN NOTES

Cowls are the perfect addition to any winter ensemble. Ideal for staying toasty, easy to style, and quick-to-knit, you'll love this project. Worked in the round from the bottom up, this striking cowl combines thoughtful ribbing, twisted stitches, and stranded colorwork. It uses Deluxe Worsted Superwash – a yarn that is interchangeable with Deluxe Worsted. Both yarns offer endless color combinations.

There are two options for working each of the types of crosses – choose the one that works best for you!

## STITCH GUIDE

### Ribbing

*(multiple of 8 sts)*

**Rnd 1:** \* K1, p2, k1, p1, k1, p2; rep from \* to end. Rep Rnd 1 for patt.

*Note: The ribbing as written here in the pattern is a bit different than what is shown in the photo. As written here, the knit columns will smoothly transition into the crossed stitches, unlike the photo.*

### Option 1:

**Right Cross (RC):** Sl next st to cn and hold in back, k1A from left ndl, k1B from cn.

**Left Cross (LC):** Sl next st to cn and hold in front, k1B from left ndl, k1A from cn.

**1x1x1 Left Cross (LC):** Sl next st to cn and hold in front, RC from left ndl, k1A from cn.

### Option 2:

**Right Cross (RC):** K2tog A but do not sl st from ndl, knit the first st again with B, sl both sts from ndl.

**Left Cross (LC):** Knit the second st on the left ndl through the back loop with B, knit the first st through the front loop with A, sl both sts from ndl.

**1x1x1 Left Cross (LC):** Sl next st to cn and hold in front, RC, k1A from cn.

## Willowwork

*(multiple of 8 sts)*

**Set-up Rnd:** \* K1A, k2B, k1A, k1B, k1A, k2B; rep from \* to end.

**Rnd 1:** \* K3B, 1x1x1 LC, k2B; rep from \* to end.

**Rnd 2:** \* K2B, RC, k1B, LC, k1B; rep from \* to end.

**Rnd 3:** \* K1B, RC, k3B, LC; rep from \* to end.

**Rnds 4-5:** \* K1B, k1A, k2B, k1A, k2B, k1A; rep from \* to end.

**Rnd 6:** Remove BOR m. Sl the last st from Rnd 5 back to left ndl. \* 1x1x1 LC, [k1B, k1A] 2 times, k1B; rep from \* to end. Sl next st (first st of the initial 1x1x1 LC of this rnd), replace BOR m.

**Rnds 7-8:** Rep Rnds 4-5.

**Rnd 9:** \* K1B, LC, k3B, RC; rep from \* to end.

**Rnd 10:** \* K2B, LC, k1B, RC, k1B; rep from \* to end.

**Final Rnd:** Rep Set-up Rnd.

Rep Rnds 1-10 for patt.

## COWL

With A and smaller ndl, cast on 144 (256) sts. PM and join to work in the rnd, being careful not to twist.

### Lower Edge

Rep Rnd 1 of Ribbing, 10 times. Patt will be repeated 18 (32) times across rnd.

### Main Cowl

Switch to larger ndl. Work Set-up Rnd of Willowwork patt. Rep Rnds 1-10 of patt, 5 times, then rep Rnd 1, 1 more time. Work Final Rnd.

### Upper Edge

Switch to smaller ndl. Rep Rnd 1 of Ribbing, 10 times. Bind off all sts in patt.

## FINISHING

Weave in ends and block.

*Knit. Relax. Smile. Repeat!*

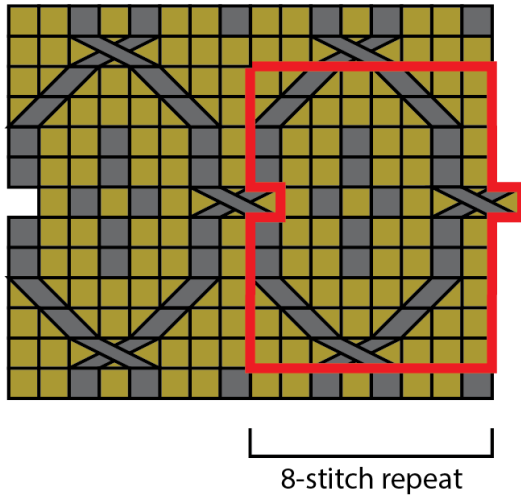
2019 © Universal Yarn, Inc.

All rights reserved.

[www.universalyarn.com](http://www.universalyarn.com)

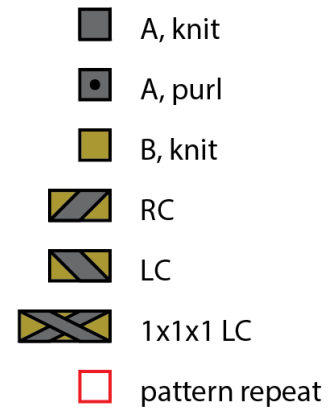
This pattern may not be reproduced for business, trade or sale.

## Willowwork



Final Rnd  
1  
10  
9  
8  
7  
6  
5  
4  
3  
2  
1  
Set-up Rnd

## Key



## Ribbing



## Abbreviations

<b>bor</b>	beginning of round
<b>cn</b>	cable needle
<b>k</b>	knit
<b>m</b>	marker
<b>ndl</b>	needle
<b>p</b>	purl
<b>patt</b>	pattern
<b>pm</b>	place marker
<b>rep</b>	repeat
<b>rnd</b>	round
<b>sl</b>	slip
<b>st(s)</b>	stitch(es)

*Knit. Relax. Smile. Repeat!*

2019 © Universal Yarn, Inc.

All rights reserved.

[www.universalyarn.com](http://www.universalyarn.com)

This pattern may not be reproduced for business, trade or sale.