



## Pattern Collection: Accessories



### Welkin

Designed by Rachel Brockman

### DIFFICULTY

Intermediate

### SIZES

One Size

### FINISHED MEASUREMENTS

**Wingspan (along bottom edge): 80"**

**Depth at Center: 26"**

### MATERIALS

**Rozetti Yarns *Nymph*** (84% cotton, 16% polyamide; 50g/125 yds)

- 107 Taiga (A) – 5 skeins
- 113 Swan (B) – 3 skeins

**Needles:** US Size 7 (4.5 mm) 40" circular (to accommodate large number of sts) or size needed to obtain gauge)

**Notions:** Tapestry needle, stitch markers, US 7 (4.5 mm) crochet hook (or similar size)

### GAUGE

18 sts x 29 rows = 4" in Stockinette stitch (St st)

**Save time, check your gauge.**

*Knit. Relax. Smile. Repeat!*

2021 © Universal Yarn, Inc.

All rights reserved.

[www.universalyarn.com](http://www.universalyarn.com)

This pattern may not be reproduced for business, trade or sale.

Questions? Contact [patterns@universalyarn.com](mailto:patterns@universalyarn.com)

## PATTERN NOTES

Welkin is a shawl inspired by lofty clouds floating across the beautiful blue sky while a gentle breeze brushes your shoulders on pleasant Spring days. Knit in Nymph, this lightweight accessory is downy soft with an ethereal halo.

This crescent-shaped shawl is knit flat from the top down. Two increases are worked on every row (right side and wrong side). The shawl is finished with a crochet picot trim.

## SHAWL

### Starting Tab

With color A, cast on 4 sts. Knit 7 rows in garter st.

**Set-up Row 1 (RS):** K4, rotate work 90 degrees, pick up and knit 3 sts from side of Tab, pick up and knit 4 sts from cast-on edge – 11 sts.

**Set-up Row 2 (WS):** K3, pm, pfb, p3, pfb, pm, k3 – 2 sts inc'd, 13 sts. Join color B, do not break color A.

### Stripe Section

**Row 1:** With color B, k3, sl m, kfb, knit to 1 st bef m, kfb, sl m, k3 – 2 sts inc'd, 15 sts.

**Row 2:** With color B, k3, sl m, pfb, purl to 1 st bef m, pfb, sl m, k3 – 2 sts inc'd, 17 sts.

**Row 3:** With color A, k3, sl m, kfb, knit to 1 st bef m, kfb, sl m, k3 – 2 sts inc'd, 19 sts.

**Row 4:** With color A, k3, sl m, pfb, purl to 1 st bef m, pfb, sl m, k3 – 2 sts inc'd, 21 sts.

Rep Rows 1-4, 33 more times, then rep Rows 1-2, 1 more time – 268 sts inc'd, 289 sts. Break color B, cont with color A only.

### Lace Section

*Note 1: This section is also charted for your convenience.*

*Note 2: You may wish to place markers between each pattern repeat to help you stay on track.*

**Row 1 (RS):** K3, sl m, kfb, \* k1, yo, ssk, k5, k2tog, yo; rep from \* to 2 sts bef m, k1, kfb, sl m, k3 – 2 sts inc'd, 291 sts.

**Row 2 (WS):** K3, sl m, pfb, purl to 1 st bef m, pfb, sl m, k3 – 2 sts inc'd, 293 sts.

**Row 3:** K3, sl m, kfb, k2, \* k2, yo, ssk, k3, k2tog, yo, k1; rep from \* to 4 sts bef m, k3, kfb, sl m, k3 – 2 sts inc'd, 295 sts.

**Row 4:** Rep Row 2 – 2 sts inc'd, 297 sts.

**Row 5:** K3, sl m, kfb, k2tog, yo, k2, \* k3, yo, ssk, k1, k2tog, yo, k2; rep from \* to 6 sts bef m, k3, yo, ssk, kfb, sl m, k3 – 2 sts inc'd, 299 sts.

**Row 6:** Rep Row 2 – 2 sts inc'd, 301 sts.

**Row 7:** K3, sl m, kfb, yo, S2KP2, yo, k3, \* k4, yo, S2KP2, yo, k3; rep from \* to 8 sts bef m, k4, yo, S2KP2, yo, kfb, sl m, k3 – 2 sts inc'd, 303 sts.

**Row 8:** Rep Row 2 – 2 sts inc'd, 305 sts.

**Row 9:** K3, sl m, kfb, k4, yo, k2, ssk, \* k1, k2tog, k2, yo, k1, yo, k2, ssk; rep from \* to 10 sts bef m, k1, k2tog, k2, yo, k4, kfb, sl m, k3 – 2 sts inc'd, 307 sts.

**Row 10:** Rep Row 2 – 2 sts inc'd, 309 sts.

**Row 11:** K3, sl m, kfb, \* k1, k2tog, k2, yo, k1, yo, k2, ssk; rep from \* to 2 sts bef m, k1, kfb, sl m, k3 – 2 sts inc'd, 311 sts.

**Row 12:** Rep Row 2 – 2 sts inc'd, 313 sts.

**Row 13:** K3, sl m, kfb, k2, \* k1, k2tog, k2, yo, k1, yo, k2, ssk; rep from \* to 4 sts bef m, k3, kfb, sl m, k3 – 2 sts inc'd, 315 sts.

**Row 14:** Rep Row 2 – 2 sts inc'd, 317 sts.

**Row 15:** K3, sl m, kfb, k2, k2tog, yo, \* k1, yo, ssk, k5, k2tog, yo; rep from \* to 6 sts bef m, k1, yo, ssk, k2, kfb, sl m, k3 – 2 sts inc'd, 319 sts.

**Row 16:** Rep Row 2 – 2 sts inc'd, 321 sts.

**Row 17:** K3, sl m, kfb, k3, k2tog, yo, k1, \* k2, yo, ssk, k3, k2tog, yo, k1; rep from \* to 8 sts bef m, k2, yo, ssk, k3, kfb, sl m, k3 – 2 sts inc'd, 323 sts.

**Row 18:** Rep Row 2 – 2 sts inc'd, 325 sts.

**Row 19:** K3, sl m, kfb, k1, yo, ssk, k1, k2tog, yo, k2, \* k3, yo, ssk, k1, k2tog, yo, k2; rep from \* to 10 sts bef m, k3, yo, ssk, k1, k2tog, yo, k1, kfb, sl m, k3 – 2 sts inc'd, 327 sts.

**Row 20:** Rep Row 2 – 2 sts inc'd, 329 sts.

**Row 21:** K3, sl m, kfb, \* k4, yo, S2KP2, yo, k3; rep from \* to 2 sts bef m, k1, kfb, sl m, k3 – 2 sts inc'd, 331 sts.

**Row 22:** Rep Row 2 – 2 sts inc'd, 333 sts.

**Row 23:** K3, sl m, kfb, k2, \* k1, k2tog, k2, yo, k1, yo, k2, ssk; rep from \* to 4 sts bef m, k3, kfb, sl m, k3 – 2 sts inc'd, 335 sts.

**Row 24:** Rep Row 2 – 2 sts inc'd, 337 sts.

*Knit. Relax. Smile. Repeat!*

2021 © Universal Yarn, Inc.

All rights reserved.

[www.universalyarn.com](http://www.universalyarn.com)

This pattern may not be reproduced for business, trade or sale.

Questions? Contact [patterns@universalyarn.com](mailto:patterns@universalyarn.com)

**Row 25:** K3, sl m, kfb, yo, k2, ssk, \* k1, k2tog, k2, yo, k1, yo, k2, ssk; rep from \* to 6 sts bef m, k1, k2tog, k2, yo, kfb, sl m, k3 – 2 sts inc'd, 339 sts.

**Row 26:** Rep Row 2 – 2 sts inc'd, 341 sts.

**Row 27:** K3, sl m, kfb, k2, yo, k2, ssk, \* k1, k2tog, k2, yo, k1, yo, k2, ssk; rep from \* to 8 sts bef m, k1, k2tog, k2, yo, k2, kfb, sl m, k3 – 2 sts inc'd, 343 sts.

**Row 28:** Rep Row 2 – 2 sts inc'd, 345 sts.

**Row 29:** K3, sl m, kfb, k6, k2tog, yo, \* k1, yo, ssk, k5, k2tog, yo; rep from \* to 10 sts bef m, k1, yo, ssk, k6, kfb, sl m, k3 – 2 sts inc'd, 347 sts.

**Row 30:** Rep Row 2 – 2 sts inc'd, 349 sts.

**Row 31:** K3, sl m, kfb, \* k2, yo, ssk, k3, k2tog, yo, k1; rep from \* to 2 sts bef m, k1, kfb, sl m, k3 – 2 sts inc'd, 351 sts.

**Row 32:** Rep Row 2 – 2 sts inc'd, 353 sts.

**Row 33:** K3, sl m, kfb, k2, \* k3, yo, ssk, k1, k2tog, yo, k2; rep from \* to 4 sts bef m, k3, kfb, sl m, k3 – 2 sts inc'd, 355 sts.

**Row 34:** Rep Row 2 – 2 sts inc'd, 357 sts.

**Row 35:** K3, sl m, kfb, k4, \* k4, yo, S2KP2, yo, k3; rep from \* to 6 sts bef m, k5, kfb, sl m, k3 – 2 sts inc'd, 359 sts.

**Row 36:** Rep Row 2 – 2 sts inc'd, 361 sts.  
Break color A. Join color B.

### Border & Picot Trim

**Row 1 (RS):** With color B, knit.

Loosely bind off all sts kwise. Do not break yarn.  
Turn work.

**Picot Row (RS):** Using crochet hook, working through both loops of bound-off sts, \* [sl st, ch 3, sl st] in next st (picot made), sl st in next st; rep from \* to last st, [Sl st, ch 3, sl st] in last st – 180 picots. Fasten off.

### FINISHING

Weave in ends but do not trim. Wet or steam block, stretching to enhance lace. Once piece is fully dry, trim ends close to work.

### Abbreviations

<b>bef</b>	before
<b>ch</b>	chain
<b>circ</b>	circular
<b>inc('d)</b>	increase(d)
<b>k</b>	knit
<b>k2tog</b>	knit 2 stitches together (1 st dec'd)
<b>kfb</b>	knit into front and back of next st (1 st inc'd)
<b>kwise</b>	knitwise
<b>m</b>	marker
<b>meas</b>	measures
<b>ndl</b>	needle
<b>p</b>	purl
<b>pfb</b>	purl into front and back of next st (1 st inc'd)
<b>pm</b>	place marker
<b>rep</b>	repeat
<b>RS</b>	right side
<b>S2KP2</b>	slip 2 stitches as if to knit 2 together, knit 1, pass 2 slipped stitches over knit stitch; centered double decrease
<b>sl</b>	slip
<b>ssk</b>	slip next 2 sts individually knitwise, slip them back to left needle in this position, knit them together through the back loops (1 st dec'd)
<b>WS</b>	wrong side
<b>yo</b>	yarn over

*Knit. Relax. Smile. Repeat!*

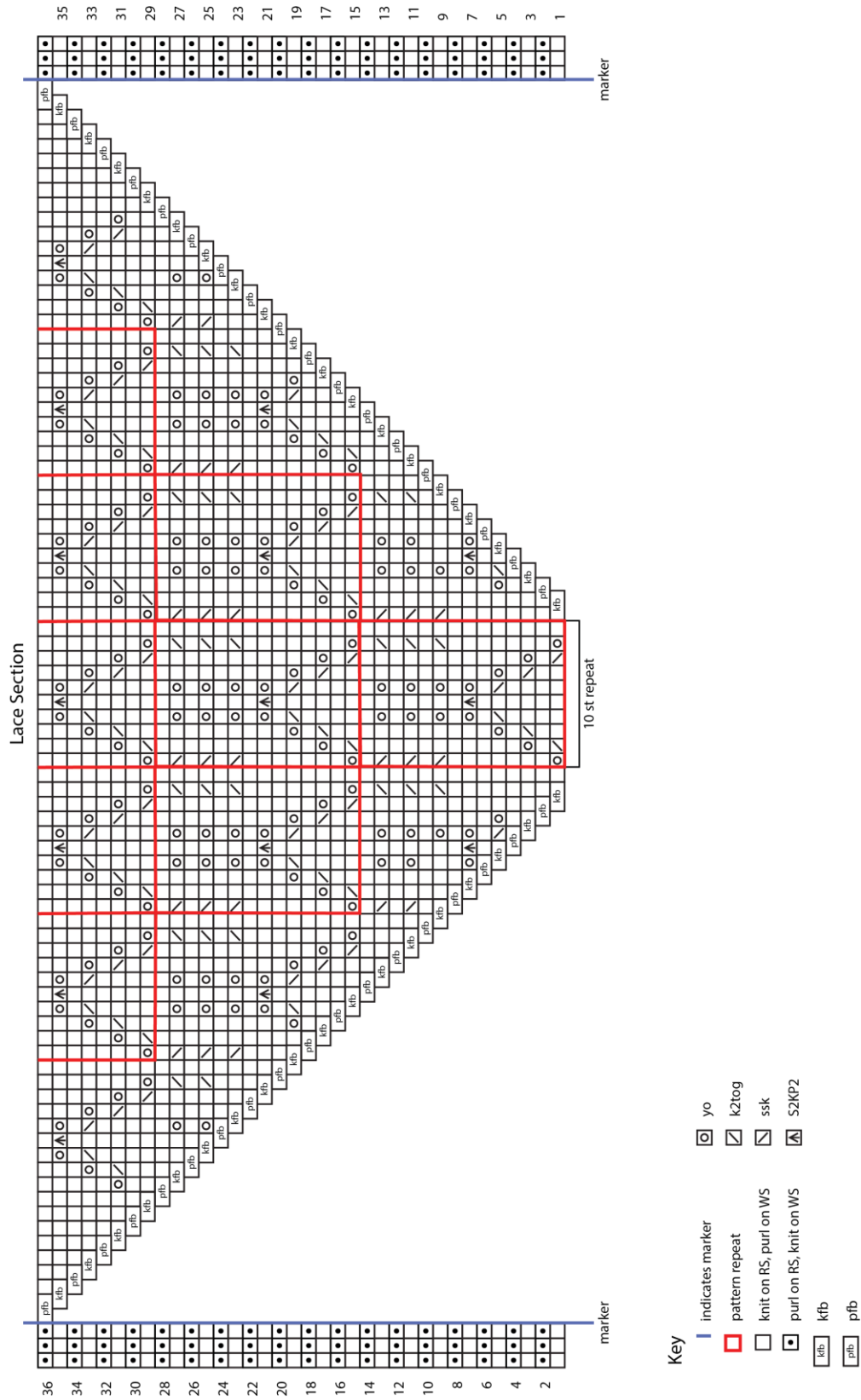
2021 © Universal Yarn, Inc.

All rights reserved.

[www.universalyarn.com](http://www.universalyarn.com)

This pattern may not be reproduced for business, trade or sale.

Questions? Contact [patterns@universalyarn.com](mailto:patterns@universalyarn.com)



## *Knit. Relax. Smile. Repeat!*

2021 © Universal Yarn, Inc.  
All rights reserved.

[www.universalyarn.com](http://www.universalyarn.com)

This pattern may not be reproduced for business, trade or sale.

Questions? Contact [patterns@universalyarn.com](mailto:patterns@universalyarn.com)