



Pattern Collection: Accessories



Vane Shawl

Designed by Universal Yarn Design Team

FINISHED MEASUREMENTS

Depth: 24"

Width along Top Edge: 60"

MATERIALS

Fibra Natura Cotton True Sport (100% Pima cotton 50g/197 yds)

- #105 Young Leaf – 6 skeins

Hook: US Size E-4 (3.5 mm) *or size needed to obtain gauge*

Notions: Tapestry needle

GAUGE

2 pattern repeats (Sh + ch-5 sp) = 1 ½" wide

Save time, check your gauge.

Knit. Relax. Smile. Repeat!

2017 © Universal Yarn, Inc.

All rights reserved.

www.universalyarn.com

This pattern may not be reproduced for business, trade or sale.

PATTERN NOTES

This warm-weather shawl is worked from the wide top edge downward to the point. One shell fewer will be worked on every even row beginning with Row 4.

STITCH GUIDE

Shell (Sh): [3 dc, ch 1, 3 dc] into st indicated.

SHAWL

With A, ch 346 (multiple of 4 chs + 2).

Row 1: Sc in second ch from hk, [ch 5, sk next 3 chs, sc in next ch to end, turn – 86 ch-5 sps.

Row 2: Ch 3 (counts as dc), 2 dc in same sc, [sc in next ch-5 sp, ch 5, sc in next ch-5 sp, Sh in next sc] to last 2 ch-5 sps, sc in next ch-5 sp, ch 5, sc in next ch-5 sp, 3 dc in last sc, turn – 42 Sh, 43 ch-5 sps.

Row 3: Ch 1, sc in same dc, [ch 5, sc in next ch-5 sp, ch 5, sc in next Sh] to last ch-5 sp, ch 5, sc in next ch-5 sp, ch 5, sc in last dc, turn.

Begin Pattern Repeat

Row 4: Sl st to center of ch-5 sp, ch 1, sc in same sp, Sh in next sc, [sc in next ch-5 sp, ch 5, sc in next ch-5 sp, Sh in next sc] to last ch-5 sp, sc in last ch-5 sp, turn – 43 Sh, 42 ch-5 sps.

Row 5: Sl st to center of Sh, ch 1, sc in same sp, [ch 5, sc in next ch-5 sp, ch 5, sc in next Sh] to end, turn – 84 ch-5 sps.

Rows 6-85: Rep Rows 4-5 – 4 ch-5 sps at the end of Row 85.

Row 86: Sl st to center of ch-5 sp, ch 1, sc in same sp, Sh in next sc, ch 5, sc in next ch-5 sp, Sh in next sc, sc in last ch-5 sp, turn – 2 Sh, 1 ch-5 sp.

Row 87: Sl st to center of Sh, ch 1, sc in same sp, ch 5, sc in ch-5 sp, ch 5, sc in Sh, turn – 2 ch-5 sps.

Row 88: Sl st to center of ch-5 sp, ch 1, sc in same sp, Sh in next sc, sc in ch-5 sp. Fasten off.

FINISHING

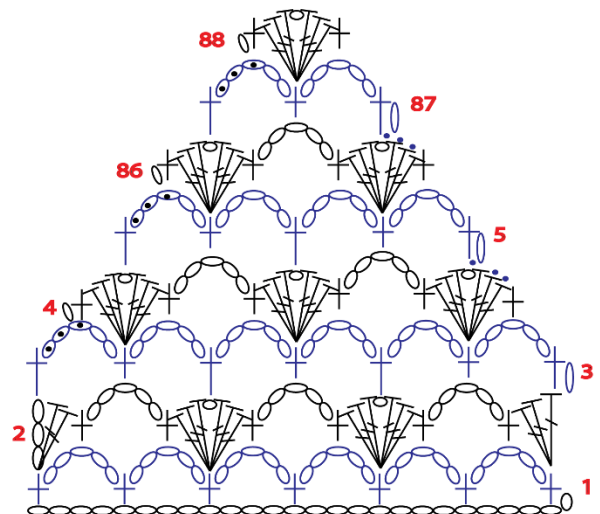
Weave in ends and block.

Fringe

Cut 528 10" pieces of yarn. Holding 3 strands together as one, attach each group of fringe to sides of Shawl, 1 group per row. Trim ends of fringe even.

Abbreviations

beg	beginning
ch	chain
dc	double crochet
meas	measures
patt	pattern
sc	single crochet
sk	skip
sl st	slip stitch
sp	space
st(s)	stitch(es)



Key

•	sl st
○	ch
+	sc
⊥	dc



Knit. Relax. Smile. Repeat!

2017 © Universal Yarn, Inc.

All rights reserved.

www.universalyarn.com

This pattern may not be reproduced for business, trade or sale.