



## Pattern Collection: Accessories



### Twisted Dee Cowl

Designed by Adrienne Larsen

### FINISHED MEASUREMENTS

**Circumference:** 53"

**Height:** 14¾"

### MATERIALS

**Fibra Natura Cashmere Lusso** (50% virgin cashmere wool, 50% recycled cashmere wool; 50g/246 yds)

- 10009 Stoppa – 4 balls

**Needles:** US Size 4 (3.5 mm) 24" to 30" circular *or size needed to obtain gauge*  
US Size 3 (3.25 mm) 24" to 40" circular

**Notions:** Tapestry needle, stitch markers, cable needle

### GAUGE

21 sts & 35 rnds = 4" in Cable pattern.

**Save time check your gauge.**

*Knit. Relax. Smile. Repeat!*

2019 © Universal Yarn, Inc.

All rights reserved.

[www.universalyarn.com](http://www.universalyarn.com)

This pattern may not be reproduced for business, trade or sale.

## PATTERN NOTES

Beautiful twists and crosses make the Twisted Dee Cowl a cable-lover's dream. This cowl is worked up in luxurious Cashmere Lusso – a feel-good blend of recycled and virgin cashmere. You'll love knitting every stitch of this pattern, but you'll love wearing the finished product even more.

This cowl is knit in the round from the bottom up.

## STITCH GUIDE

### Right Twist (RT)

Knit into second st on LH ndl, but do not pull off needle, knit first st on LH ndl and pull off both sts.

### 1x2 Right Purl Cross (RPC)

Slip 1 st to cn and hold in back, k2 from LH ndl, p1 from cn.

### 2x1 Left Purl Cross (LPC)

Slip 2 sts to cn and hold in front, p1 from LH ndl, k2 from cn.

### 2x2 Left Cross (LC)

Slip 2 sts to cn and hold in front, k2 from LH ndl, k2 from cn.

### 2x2 Right Cross (RC)

Slip 2 sts to cn and hold in back, k2 from LH ndl, k2 from cn.

### 2x2 Left Purl Cross (LPC)

Slip 2 sts to cn and hold in front, p2 from LH ndl, k2 from cn.

### 2x2 RPC

Slip 2 sts to cn and hold in back, k2 from LH ndl, p2 from cn.

## Cable

(multiple of 20 sts)

**Rnd 1:** \* P1, [RT] 3 times, p3, RT, p5, RT, p1; rep from \* to end.

**Rnd 2:** \* P1, k2, 2x2 RC, p3, k2, p5, k2, p1; rep from \* to end.

**Rnd 3:** Rep Rnd 1.

**Rnd 4:** \* P1, 2x2 LC, k2, p3, 2x1 LPC, p4, k2, p1; rep from \* to end.

**Rnd 5:** \* P1, [RT] 3 times, [p4, RT] 2 times, p1; rep from \* to end.

**Rnd 6:** \* P1, k2, 2x2 LPC, p4, 2x1 LPC, p3, k2, p1; rep from \* to end.

**Rnd 7:** \* P1, RT, p2, RT, p5, RT, p3, RT, p1; rep from \* to end.

**Rnd 8:** \* P1, k2, p2, 2x1 LPC, p4, 2x1 LPC, 2x2 RC, p1; rep from \* to end.

**Rnd 9:** \* P1, RT, p3, RT, p5, [RT] 3 times, p1; rep from \* to end.

**Rnd 10:** \* P1, k2, p3, 2x1 LPC, p4, 2x2 LC, k2, p1; rep from \* to end.

**Rnd 11:** \* P1, [RT, p4] 2 times, [RT] 3 times, p1; rep from \* to end.

**Rnd 12:** \* P1, k2, p4, 2x1 LPC, p3, k2, 2x2 RC, p1; rep from \* to end.

**Rnd 13:** \* P1, RT, p5, RT, p3, [RT] 3 times, p1; rep from \* to end.

**Rnd 14:** \* P1, k2, p5, k2, p3, 2x2 LC, k2, p1; rep from \* to end.

**Rnd 15:** Rep Rnd 13.

**Rnd 16:** \* P1, k2, p5, k2, p3, k2, 2x2 RC, p1; rep from \* to end.

**Rnd 17:** Rep Rnd 13.

**Rnd 18:** \* P1, k2, p4, 2x1 RPC, p3, 2x2 RPC, k2 p1; rep from \* to end.

**Rnd 19:** \* P1, [RT, p4] 2 times, RT, p2, RT, p1; rep from \* to end.

**Rnd 20:** \* P1, k2, [p3, 2x1 RPC] 2 times, p2, k2, p1; rep from \* to end.

**Rnd 21:** \* P1, RT, p3, RT, p4, RT, p3, RT, p1; rep from \* to end.

**Rnd 22:** \* P1, 2x2 LC, [2x1 RPC, p3] 2 times, k2, p1; rep from \* to end.

**Round 23:** Rep Rnd 5.

**Round 24:** \* P1, k2, 2x2 RC, p3, 2x1 RPC, p4, k2, p1 \*; rep from \* to end.

**Rnd 25:** Rep Rnd 1.

**Rnd 26:** \* P1, 2x2 LC, k2, p3, k2, p5, k2, p1; rep from \* to end.

Rep Rnds 1-26 for patt.

## COWL

### Lower Edge

With smaller ndl, cast on 280 sts. Pm and join to work in the round, being careful not to twist.

**Rnds 1, 3 & 5:** Purl.

**Rnds 2, 4 & 6:** Knit.

Change to larger ndl.

### Main Cowl

*Knit. Relax. Smile. Repeat!*

2019 © Universal Yarn, Inc.

All rights reserved.

[www.universalyarn.com](http://www.universalyarn.com)

This pattern may not be reproduced for business, trade or sale.

*Note: You may wish to place stitch markers between each pattern repeat to help stay on track.*

**Rnd 1:** Work Rnd 1 of Cable patt to end; pattern will be repeated 14 times each rnd.

**Rnd 2:** Work next rnd of Cable patt to end.  
Cont as est'd through Rnd 26 of Cable patt, then Rep Rnds 1-26 of Cable patt 3 more times, then rep Rnds 1-13 of cable patt one more time.  
Change to smaller ndl.

**Upper Edge**

**Rnds 1, 3 & 5:** Knit.  
**Rnds 2, 4 & 6:** Purl.  
Bind off all sts kwise.

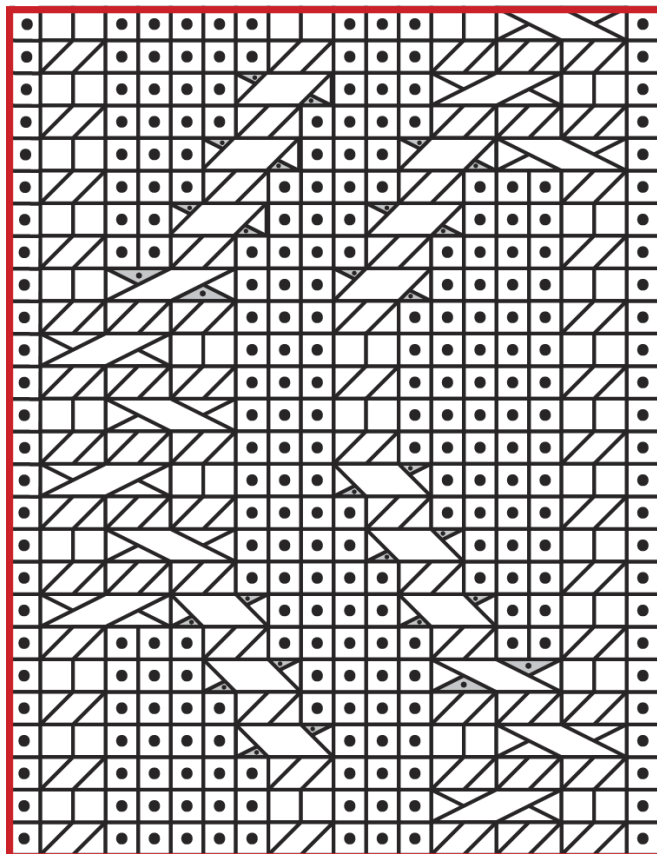
**FINISHING**

Block to finished measurements. Weave in ends.

**Abbreviations**

|              |                    |
|--------------|--------------------|
| <b>bor</b>   | beginning of round |
| <b>circ</b>  | circular           |
| <b>cn</b>    | cable needle       |
| <b>est'd</b> | established        |
| <b>k</b>     | knit               |
| <b>kwise</b> | knitwise           |
| <b>LC</b>    | left cross         |
| <b>LH</b>    | left hand          |
| <b>ndl</b>   | needle             |
| <b>p</b>     | purl               |
| <b>patt</b>  | pattern            |
| <b>pm</b>    | place marker       |
| <b>RC</b>    | right cross        |
| <b>rep</b>   | repeat             |
| <b>RH</b>    | right hand         |
| <b>rnd</b>   | round              |
| <b>RPC</b>   | right purl cross   |
| <b>st(s)</b> | stitch(es)         |

**Cable**



**Key**

|  |         |
|--|---------|
|  | knit    |
|  | purl    |
|  | rt      |
|  | 1/2 RPC |
|  | 2/1 LPC |
|  | 2/2 RC  |
|  | 2/2 LC  |
|  | 2/2 RPC |
|  | 2/2 LPC |
|  | repeat  |

*Knit. Relax. Smile. Repeat!*

2019 © Universal Yarn, Inc.

All rights reserved.

[www.universalyarn.com](http://www.universalyarn.com)

This pattern may not be reproduced for business, trade or sale.