



## Pattern Collection: Women



### Tulip Tee

Designed by Amy Gunderson

### SIZES

Extra Small (Small, Medium, Large, 1X, 2X, 3X, 4X)

Shown in Small size modeled with 3½" of positive ease.

### FINISHED MEASUREMENTS

**Bust:** 31¾ (35½, 39¼, 43, 46¾, 50¾, 54½, 58¾)""

**Length:** 21¾ (22, 22½, 22¾, 23½, 23¾, 24¼, 24½)""

### MATERIALS

**Fibra Natura Lina** (68% linen, 32% cotton; 100g/252 yds)

- 107 Lavandula – 4 (4, 5, 5, 6, 6, 7, 7) skeins

**Needles:** US Size 5 (3.75 mm) 32" circular, 16" circular (for neck edging) or size needed to obtain gauge

**Notions:** Tapestry needle, stitch holders.

### GAUGE

21 sts x 27 rows = 4" in St st

**Save time, check your gauge.**

*Knit. Relax. Smile. Repeat!*

2018 © Universal Yarn, Inc.

All rights reserved.

[www.universalyarn.com](http://www.universalyarn.com)

This pattern may not be reproduced for business, trade or sale.

## PATTERN NOTES

There are many reasons to love springtime: the buds beginning to appear on trees, flowers popping up on even the chilliest days, and the first days warm enough to pull out your favorite warm-weather knitwear. Like everything new in springtime, our new yarn, Lina, is perfect to kick-off your warm-weather knitting.

The Tulip Top is the perfect top for spring. Three-quarter sleeves keep you comfortable on warm, yet breezy days. Thoughtful details including the beautiful floral motif along the hem and eyelets along the edges make this garment truly special.

Front and Back are knit flat from the bottom up and joined at the shoulders with a three needle bind-off. Sleeves are worked by casting on stitches to the front and back pieces.

## STITCH GUIDE

### K1, P1 Ribbing

(*odd number of sts*)

**Row 1 (RS):** \* K1, p1; rep from \* to last st, k1.

**Row 2 (WS):** \* P1, k1; rep from \* to last st, p1.

Rep Rows 1-2 for patt.

**Inc 7:** {[Knit into the front loop, knit into the back loop] 3 times, knit into the front loop} of the next stitch – 6 sts inc'd.

**Bobble:** {[Knit into the front loop, knit into the back loop] 3 times, knit into the front loop} of the next stitch, turn; p7, turn; k7, turn; p3tog, p1, p3tog tbl, turn, sl 2-k1-p2sso.

### Tulips

(*begins with multiple of 10 sts + 3*)

**Rows 1, 3, 5, 7 (WS):** P1, \* k5, p1 tbl, k4; rep from \* to last 2 sts, k1, p1.

**Rows 2, 4, 6 (RS):** K1, p1, \* p4, k1 tbl, p5; rep from \* to last st, k1.

**Row 8:** K1, p1, \* p4, Inc-7, p5; rep from \* to last st, k1 – 6 sts inc'd each rep, 16 sts each rep.

**Row 9:** P1, \* k5, p7, k4; rep from \* to last 2 sts, k1, p1.

**Row 10:** K1, p1, \* p3, k2tog, k2, m1p, k1 tbl, m1p, k2, ssk, p4; rep from \* to last st, k1.

**Row 11:** P1, \* k4, p3, k1, p1 tbl, k1, p3, k3; rep from \* to last 2 sts, k1, p1.

**Row 12:** K1, p1, \* p2, k2tog, k2, m1p, p1, k1 tbl, p1, m1p, k2, ssk, p3; rep from \* to last st, k1.

**Row 13:** P1, \* k3, p3, k2, p1 tbl, k2, p3, k2; rep from \* to last 2 sts, k1, p1.

**Row 14:** K1, p1, \* p1, [k2tog] 2 times, m1p, p2, k1 tbl, p2, m1p, [ssk] 2 times, p2; rep from \* to last st, k1 – 2 sts dec'd each rep, 14 sts rem each rep.

**Row 15:** P1, \* k2, p2, k3, p1 tbl, k3, p2, k1; rep from \* to last 2 sts, k1, p1.

**Row 16:** K1, p1, \* k3tog, p3, Bobble, p3, sssk, p1; rep from \* to last st, k1 – 4 sts dec'd each rep, 10 sts rem each rep.

**Row 17:** P1, \* k5, k1 tbl, k4; rep from \* to last 2 sts, k1, p1.

**Row 18:** K1, purl to last st, k1.

Rep Rows 1-18, 1 time for patt.

## FRONT

Cast on 103 (113, 123, 133, 143, 153, 163, 173) sts. Work in K1, P1 Ribbing for 1½", ending with WS row. Knit 2 rows in garter st.

**Next row (RS):** K1, \* k2tog, yo; rep from \* to last 2 sts, k2. Knit 2 rows in garter st. Work Rows 1-18 of Tulips patt. Tulips patt will be repeated 10 (11, 12, 13, 14, 15, 16, 17) times across each row. Work even in St st for 3 rows.

### Shape Waist

**Dec row (RS):** K1, k2tog, knit to last 3 sts, ssk, k1 – 2 sts dec'd. Working in St st, rep Dec row every 8 rows, 8 more times – 16 sts dec'd, 85 (95, 105, 115, 125, 135, 145, 155) sts rem. Work even in St st until piece meas 15" from cast-on edge, ending with WS row.

### Increase for Sleeves

Cast on 8 (8, 7, 7, 6, 6, 6, 6) sts at beg of next 6 (6, 8, 8, 6, 6, 20, 20) rows, cast on 9 (9, 8, 8, 7, 7, 0, 0) sts at beg of next 8 (8, 8, 8, 12, 12, 0, 0) rows – 60 sts inc'd each side, 205 (215, 225, 235, 245, 255, 265, 275) sts. Work even in St st until piece meas ¾ (1, 1¼, 1½, 1¾, 2, 2¼, 2½)" from last Sleeve cast-on row, ending with WS row.

*Knit. Relax. Smile. Repeat!*

2018 © Universal Yarn, Inc.

All rights reserved.

[www.universalyarn.com](http://www.universalyarn.com)

This pattern may not be reproduced for business, trade or sale.

### Shape Neck

**Row 1 (RS):** K94 (99, 104, 109, 114, 119, 124, 129) sts, attach new ball of yarn and bind off center 17 sts, knit across rem 94 (99, 104, 109, 114, 119, 124, 129) sts. Working both sides at once, bind off 7 sts at beg of next 2 rows, 5 sts at beg of next 2 rows, 4 sts at beg of next 2 rows, and 2 sts at beg of next 2 rows – 76 (81, 86, 91, 96, 101, 106, 111) sts rem each side. Work even in St st until piece meas 4¾ (5, 5¼, 5½, 5¾, 6, 6¼, 6½)'' from last Sleeve cast-on row, ending with WS row. Place sts on holders.

### BACK

Work as for Front until piece meas 2¾ (3, 3 ¼, 3½, 3¾, 4, 4¼, 4½)'' from last Sleeve cast-on row, ending with WS row.

### Shape Neck

Work as for Front Shape Neck. Work even in St st until piece meas 4¾ (5, 5¼, 5½, 5¾, 6, 6¼, 6½)'' from last Sleeve cast-on row, ending with WS row. Join shoulder seams to Front using 3-ndl bind-off.

### FINISHING

Block piece to finished measurements.

### Sleeve Edging

With RS facing, pick up and knit 47 (51, 53, 55, 57, 61, 63, 65) sts along side of Sleeve. Knit 1 WS row.

**Next row (RS):** K1, \* k2tog, yo; rep from \* to last 2 sts, k2. Knit 3 rows in garter st. Bind off all sts loosely.

### Neck Edging

With circ ndl, pick up and knit 55 sts evenly along Back Neck and 75 sts evenly along Front Neck – 130 sts. PM and join to work in the rnd. Purl 1 rnd.

**Next rnd:** \* K2tog, yo; rep from \* to end. Purl 1 rnd.

**Next rnd:** \* K8, k2tog; rep from \* to end – 13 sts dec'd, 117 sts rem.

Purl 1 rnd, Bind off all sts loosely.

Sew Sleeve and side seams. Weave in ends.

### Abbreviations

<b>beg</b>	begin(ning)
<b>dec('d)</b>	decrease(d)
<b>circ</b>	circular
<b>garter st</b>	knit every row
<b>inc('d)</b>	increase(d)
<b>k</b>	knit
<b>k2tog</b>	knit 2 stitches together (1 st dec'd)
<b>k3tog</b>	knit 3 stitches together (2 sts dec'd)
<b>m1P</b>	insert left needle from back to front under horizontal strand of yarn lying between st just worked and next st, purl this st through the front loop (1 st inc'd)
<b>meas</b>	measures
<b>ndl</b>	needle
<b>p</b>	purl
<b>p3tog</b>	purl 3 sts together (2 sts dec'd)
<b>patt</b>	pattern
<b>pm</b>	place marker
<b>pssso</b>	pass slipped stitch(es) over
<b>rem</b>	remain(ing)
<b>rep</b>	repeat
<b>rnd</b>	round
<b>RS</b>	right side
<b>sl</b>	slip
<b>ssk</b>	slip next 2 sts individually knitwise, slip them back to left needle in this position, knit them together through the back loops (1 st dec'd)
<b>sssk</b>	slip next 3 sts individually knitwise, slip them back to left needle in this position, knit them together through the back loops (2 sts dec'd)
<b>St</b>	Stockinette stitch (knit on RS rows, purl on WS rows; in the rnd, knit every rnd)
<b>st(s)</b>	stitch(es)
<b>tbl</b>	through the back loop(s)
<b>WS</b>	wrong side
<b>yo</b>	yarn over

*Knit. Relax. Smile. Repeat!*

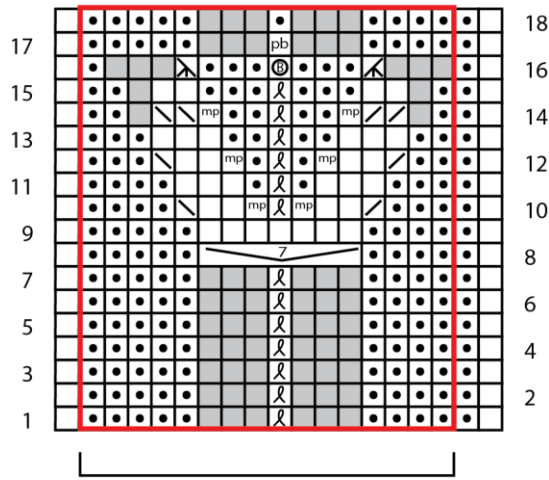
2018 © Universal Yarn, Inc.

All rights reserved.

[www.universalyarn.com](http://www.universalyarn.com)

This pattern may not be reproduced for business, trade or sale.

# Tulips

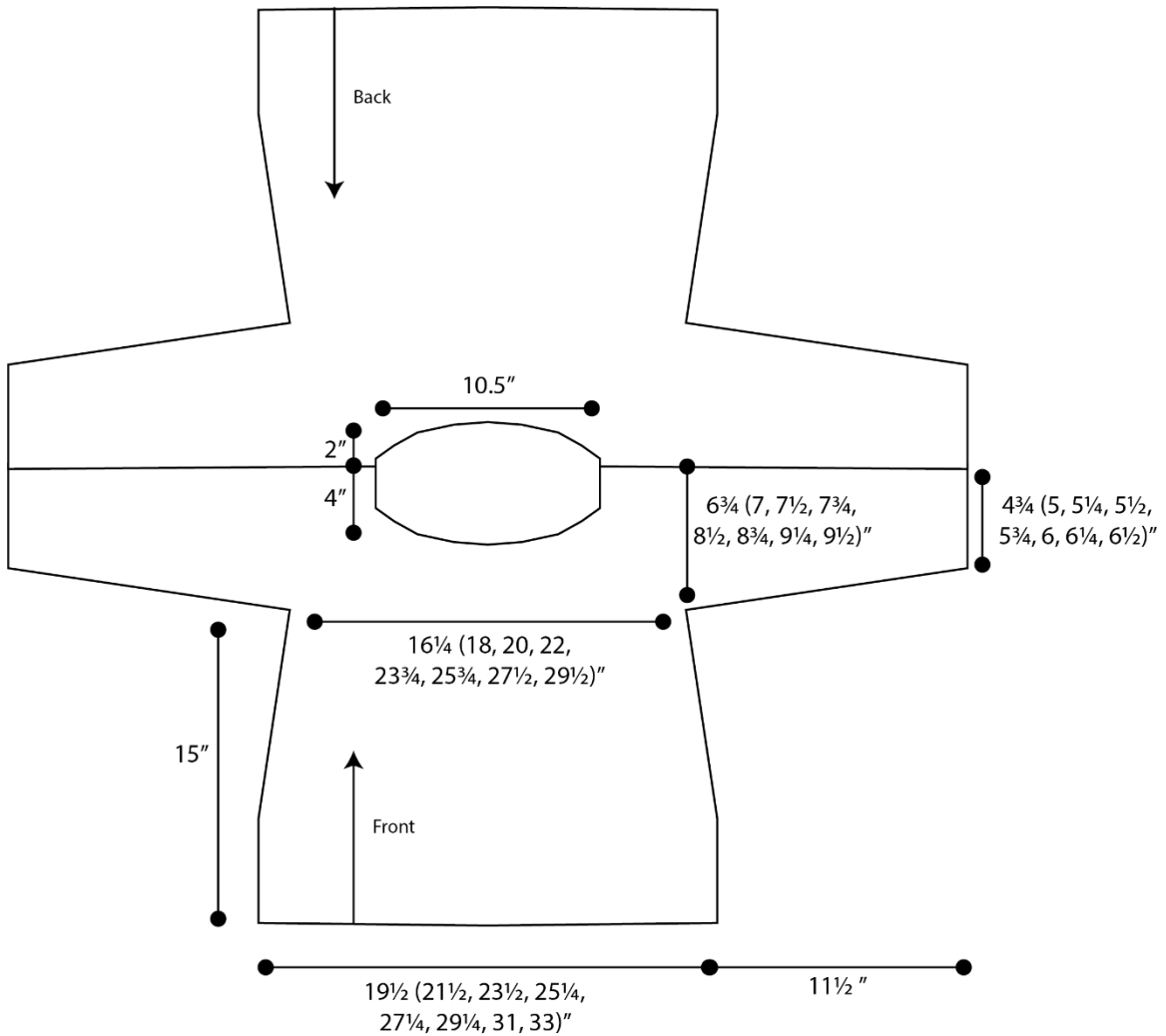


begins with multiple of 10 sts



## Key

- knit on RS, purl on WS
- purl on RS, knit on WS
- no stitch
- k1tbl on RS, p1tbl on WS
- k1tbl on WS
- m1P
- k2tog
- k3tog
- ssk
- sssk
- bobble
- Inc-7



*Knit. Relax. Smile. Repeat!*

2018 © Universal Yarn, Inc.

All rights reserved.

[www.universalyarn.com](http://www.universalyarn.com)

This pattern may not be reproduced for business, trade or sale.