



Pattern Collection: Accessories



Tropical Crochet Wrap

Designed by Universal Yarn Design Team

SIZES

Small (Large)

FINISHED MEASUREMENTS

Length: 62 (87)"

Width: 8½ (14¼)"

MATERIALS

Universal Yarn Colorburst (65% superwash fine merino, 35% acrylic; 200g/660 yds)

- 105 Tropical Sunset – 1 (2) ball(s)

Hook: US Size G-6 (4 mm) *or size needed to obtain gauge*

Notions: Tapestry needle

GAUGE

15 sts x 8 rows = 4" in Lace patt

Save time check your gauge.

For questions about this pattern, please contact patterns@universalyarn.com.

Knit. Relax. Smile. Repeat!

2019 © Universal Yarn, Inc.

All rights reserved.

www.universalyarn.com

This pattern may not be reproduced for business, trade or sale.

PATTERN NOTES

The Tropical Crochet Wrap is the perfect project for adding a bit of color to the dreariest days. Self-shading Colorburst makes this pattern a joy to crochet, and the lace pattern is as soothing as it is beautiful.

This body of this wrap is worked flat. A single crochet border is worked around the edges to create a tidy finish.

STITCH GUIDE

Lace

(Multiple of 12 sts, plus 4)

Row 1 (RS): 2dc in 4th ch from hk, * ch 3, sk next 3 ch, sc in next ch, ch 5, sk next 3 ch, sc in next ch, ch 3, sk next 3 ch, [2dc, ch 1, 2dc] in next ch; rep from * across, ending with 3dc in last ch, turn.

Row 2 (WS): Ch 3 (counts as dc here and throughout), 2dc in 1st dc, sk next 2 dc, * dc in next ch-3 sp, ch 3, sc in next ch-5 sp, ch 3, dc in next ch-3 sp**, [2dc, ch 1, 2dc] in next ch-1 sp; rep from * across, ending last rep at **, sk next 2 dc, 3dc in top of turning ch, turn.

Row 3: Ch 3, 2dc in 1st dc, * ch 3, sc in next ch-3 sp, ch 5, sc in next ch-3 sp, ch 3 **, [2dc, ch 1, 2dc] in next ch-1 sp; rep from * across, ending last rep at **, sk next 3 dc, dc in top of turning ch, turn.

Rep Rows 2-3 for patt.

WRAP

Ch 28 (52).

Row 1 (RS): Work Row 1 of Lace patt to end. Patt will be repeated 2 (4) times across each row.

Row 2 (WS): Work Row 2 of Lace patt to end.

Row 3: Work Row 3 of Lace patt to end.

Rep Rows 2-3 until piece meas 60 (85)" from start. Fasten off.

FINISHING

Gently wash and block to finished measurements. Weave in ends.

Edging

Step 1: Beg at any corner, * 2sc into corner sp, 22 (46) sc along short edge, 2sc into corner sp, 227 (297) sc along long edge; rep from * 1 more time – 506 (694) sc. Sl st into 1st sc to join in the rnd.

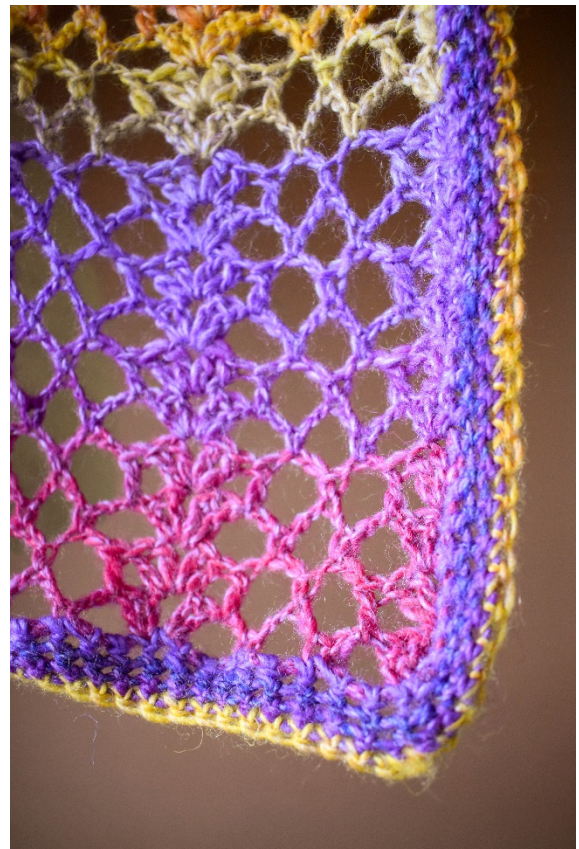
Step 2: Sc in each sc around, sl st into 1st sc.

Step 3: Sc in each sc around. Fasten off.

Weave in rem ends.

Abbreviations

beg	begin(ning)
ch	chain
dc	double crochet
hk	hook
meas	measures
patt	pattern
rep	repeat
rnd	round
RS	right side
sc	single crochet
sk	skip
sl	slip
sp	space(s)
st(s)	stitch(es)
WS	wrong side



Knit. Relax. Smile. Repeat!

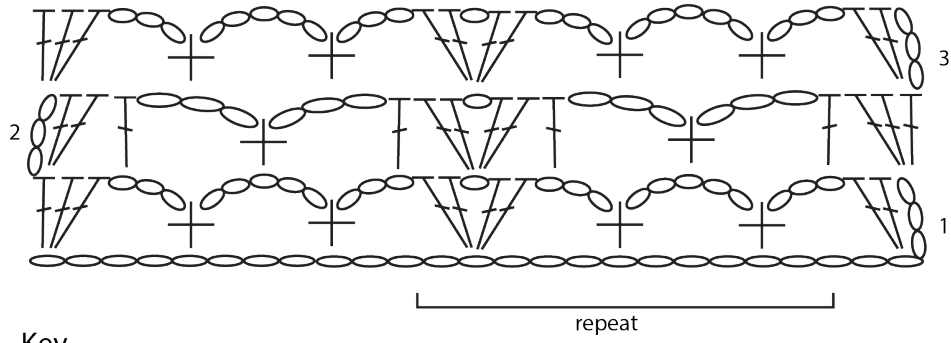
2019 © Universal Yarn, Inc.

All rights reserved.

www.universalyarn.com

This pattern may not be reproduced for business, trade or sale.

Lace



Key

○ ch

⊕ sc

┌ dc

Knit. Relax. Smile. Repeat!

2019 © Universal Yarn, Inc.

All rights reserved.

www.universalyarn.com

This pattern may not be reproduced for business, trade or sale.