



Pattern Collection: Accessory



Together Cowl

Designed by Universal Design Team

SIZES

One Size

FINISHED MEASUREMENTS

Length: 17½"

Width: 7"

MATERIALS

Universal Yarn Uptown DK Magix (100% anti-pilling acrylic; 100g/273 yds)

- 702 Purple Party (MC) – 1 skein

Universal Yarn Uptown DK (100% anti-pilling acrylic; 100g/273 yds)

- 125 Silver (CC) – 1 skein

Needles: Two sets US Size 6 (4 mm) dpns
or size needed to obtain gauge

Hook: *(for cast-on)* G-6 (4 mm)

Notions: Tapestry needle, stitch marker, waste yarn

GAUGE

22 sts x 25 rows = 4" in Slip Stitch patt

Save time, check your gauge.

Knit, Relax, Smile, Repeat!

2018 © Universal Yarn, Inc.

All rights reserved.

www.universalyarn.com

This pattern may not be reproduced for business, trade or sale.

PATTERN NOTES

Reversible, warm, and seamless – these are the qualities that make this cowl so wearable. Silvery-grey stripes combined with self-patterning Uptown DK *Magix* and a slipped-stitch pattern make this cowl a joy to knit.

This cowl is knit in the round beginning with a crochet provisional cast on. Each end of the piece is grafted together, creating a seamless cowl. When changing colors, do not break yarn. Instead, carry the yarn along the inside of the piece. All slipped stitches in this pattern are slipped purlwise with yarn in front.

Crochet Provisional Cast-on

With waste yarn and crochet hook, make a ch approximately 10 chs longer than the number of sts to be cast on. With working yarn and knitting needle, pick up and knit sts through the bottom bump of each ch.

STITCH GUIDE

Slip Stitch Pattern

(multiple of 8 sts)

Rnd 1: * K1, sl 3 wyif, k1, yo, sl 1-k2tog-*psso*, yo; rep from * to end.

Rnds 2-3: * K1, sl 3 wyif, k4; rep from * to end.

Rnd 4: * Knit to end; rep from * to end.

Rnd 5: * K1, yo, sl 1-k2tog-*psso*, k1, sl 3 wyif; rep from * to end.

Rnds 6-7: * K5, sl 3 wyif; rep from * to end.

Rnd 8: Knit to end.

COWL

With MC and using the Crochet Provisional method, cast on 80 sts. PM and join to knit in the rnd.

Stripe 1

Rnd 1: Work Slip Stitch patt to end.

Cont as est'd until piece meas 5" from cast-on edge. Join CC, do not break MC.

Stripe 2

With CC, cont as est'd until piece meas 2½" from color change.

Stripe 3

With MC, cont as est'd until piece meas 5" from color change.

Stripes 4-5, 6-7, & 8-9

Work as for Stripes 2-3, ending with MC. Piece should meas approx 35" from cast-on edge.

Carefully unravel the waste yarn from the cast-on edge and place live sts onto a spare set of dpns. Bring both ends of the tube parallel to one another, taking care not to twist the tube. With RS facing, graft the 2 sets of sts together using Kitchener stitch. Take care to ensure the WS's of each end are facing inward when grafting.

FINISHING

Block to finished measurements and weave in ends.



Knit, Relax, Smile, Repeat!

2018 © Universal Yarn, Inc.

All rights reserved.

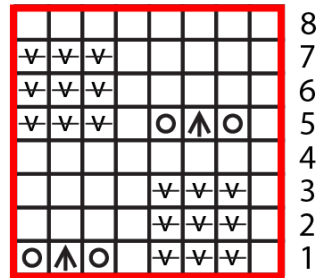
www.universalyarn.com

This pattern may not be reproduced for business, trade or sale.

Abbreviations

approx	approximately
CC	contrast color
ch	chain
cont	continue
dpn(s)	double pointed needle(s)
est'd	established
k	knit
k2tog	knit 2 stitches together (1 st dec'd)
m	marker
MC	main color
meas	measures
patt	pattern
pm	place marker
pssso	pass slipped stitch(es) over
rnd	round
sl	slip
st(s)	stitch(es)
WS	wrong side
wyif	with yarn held in front
yo	yarn over

Slip Stitch



Key

	knit
	sl 1 wyif
	yo
	sl 1-k2tog-pssso
	pattern repeat

Knit, Relax, Smile, Repeat!

2018 © Universal Yarn, Inc.

All rights reserved.

www.universalyarn.com

This pattern may not be reproduced for business, trade or sale.