



Pattern Collection: Accessory



Tidal Shawl

Designed by Rachel Brockman

SIZE

One Size

FINISHED MEASUREMENTS

Wingspan: 64"

Depth at Center: 32"

MATERIALS

Universal Yarn *Little Bird* (100% microfiber acrylic; 100 g/346 yds)

- 108 Blue Whisper (MC) – 2 skeins

Universal Yarn *Little Bird Colors* (100% acrylic; 100 g/346 yds)

- 205 Skydive (CC) – 2 skeins

Needles: US Size 5 (3.75 mm) 40" circular (to accommodate large number of sts) *or size needed to obtain gauge*

Notions: Tapestry needle, stitch markers

GAUGE

23 sts x 27 Rows = 4" in Eyelet Ridge patt

Save time, check your gauge.

Knit. Relax. Smile. Repeat!

2018 © Universal Yarn, Inc.

All rights reserved.

www.universalyarn.com

This pattern may not be reproduced for business, trade or sale.

PATTERN NOTES

Enjoy the soothing shades of blue combined with a pretty little stitch pattern in this top-down shawl. Thoughtful texture is combined with sweet little eyelets to keep the knitting entertaining, but not too difficult. Little Bird is made of microfiber acrylic, yet it feels and behaves just like cotton, making this a great warm-weather project.

I-Cord Bind-Off

Cast on 3 sts to first st on left ndl using knitted cast-on. * K2, k2tog tbl (1 st bound-off), slip these 3 sts back to left ndl; rep from * until all sts have been bound-off. Bind off rem 3 I-Cord sts.

Sand Stitch

(even number of sts)

Row 1 (RS): Knit to end.

Row 2 (WS): * K1, p1; rep from * to end.

Rep Rows 1-2 for patt.

SHAWL

Starting Tab

With CC, cast on 3 sts. Knit 7 rows in garter st.

Set-up Row 1 (RS): K3, rotate work 90 degrees, pick up and knit 3 sts from side of Tab, pick up and knit 3 sts from cast-on edge – 9 sts.

Set-up Row 2 (WS): P1, k1, yo, pm, p2, pm, p1, pm, p2, pm, yo, k1, p1 – 2 sts inc'd – 11 sts. Join MC, do not break CC.

Row 1: With MC, k3, yo, sl m, k2, sl m, k1, sl m, k2, sl m, yo, k3 – 2 sts inc'd, 13 sts.

Row 2: [P1, k1] 2 times yo, sl m, p2, sl m, p1, sl m, p2, sl m, yo, [k1, p1] 2 times – 2 sts inc'd, 15 sts.

Row 3: With CC, knit to m, sl m, yo, knit to m, yo, sl m, k1, sl m, yo, knit to m, yo, knit to end – 4 sts inc'd, 19 sts.

Row 4: [P1, k1] 2 times, p1, sl m, purl to m, sl m, p1, sl m, purl to m, sl m, p1, [k1, p1] 2 times.

Row 5: With MC, knit to m sl m, yo, knit to m, yo, sl m, k1, sl m, yo, knit to m, yo, sl m, knit to end – 4 sts inc'd, 23 sts.

Row 6: [P1, k1] 2 times, p1, sl m, purl to m, sl m, p1, sl m, purl to m, sl m, p1, [k1, p1] 2 times.

Row 7: With CC, knit to m, sl m, yo, knit to m, yo, sl m, k1, sl m, yo, knit to m, yo, sl m, knit to end – 4 sts inc'd, 27 sts.

Row 8: [P1, k1] 2 times, p1, sl m, purl to m, sl m, p1, sl m, purl to m, sl m, p1, [k1, p1] 2 times.

Establish Pattern

Note: Color changes occur every RS row. Change colors as indicated on Left & Right Eyelet Ridge patterns.

Row 9 (RS): With MC, knit to m, sl m, yo, knit to m, yo, sl m, k1, sl m, yo, knit to m, yo, sl m, knit to end – 4 sts inc'd, 31 sts.

Row 10 (WS): Cont as est'd to m, sl m, purl to last m, sl m, cont as est'd to end.

Row 11: With CC, cont as est'd to m, sl m, yo, k3, * k2, yo, ssk; rep from * to 3 sts bef m, k3, yo, sl m, k1, sl m, yo, k3, * yo, ssk, k2; rep from * to 3 sts bef m, k3, yo, sl m, cont as est'd to end – 4 sts inc'd, 35 sts.

Row 12: Cont as est'd to m, sl m, knit to m, sl m, p1, sl m, knit to m, sl m, cont as est'd to end.

Row 13: With MC, knit to m, sl m, yo, knit to m, yo, sl m, k1, sl m, yo, knit to m, yo, sl m, cont as est'd to end – 4 sts inc'd, 39 sts.

Row 14: Rep Row 10.

Row 15: With CC, knit to m, sl m, yo, k1, *yo, ssk, k2, rep from * to 1 st bef m, k1, yo, sl m, k1, sl m, yo, k1, * k2, yo, ssk; rep from * to 1 st bef m, k1, yo, sl m, knit to end --4 sts. inc'd, 43 sts.

Row 16: Rep Row 12.

Cont working as est'd, repeating Rows 9-16, inc'ing 4 sts every RS Row, and every WS row even as est'd, for 196 more rows – 435 sts.

Sand Stitch Border

Note: When working increases in Sand Stitch, maintain increased stitches in pattern.

Row 1 (RS): With MC, cont as est'd to m, sl m, yo, work Row 1 of Sand Stitch patt to m, yo, sl m, k1, sl m, yo, work Row 1 of Sand Stitch patt to m, yo, sl m, cont as est'd to end – 4 sts inc'd, 439 sts.

Row 2 (WS): Cont as est'd to m, sl m, work Row 2 of Sand Stitch patt to m, sl m, p1, sl m, work Row 2 of Sand Stitch patt to m, sl m, cont as est'd to end.

Row 3: With CC, cont as est'd to m, sl m, yo, work Row 1 Sand Stitch patt to m, yo, sl m, k1, sl m, yo,

Knit. Relax. Smile. Repeat!

2018 © Universal Yarn, Inc.

All rights reserved.

www.universalyarn.com

This pattern may not be reproduced for business, trade or sale.

work Row 1 of Sand Stitch patt to m, yo, sl m, cont as est'd to end – 4 sts inc'd, 443 sts.

Row 4: Cont as est'd to m, sl m, work Row 2 of Sand Stitch patt to m, sl m, p1, sl m, work Row 2 of Sand Stitch patt to m, sl m, cont as est'd to end.

Rep Rows 1-4, 2 more times – 16 sts inc'd, 459 sts.

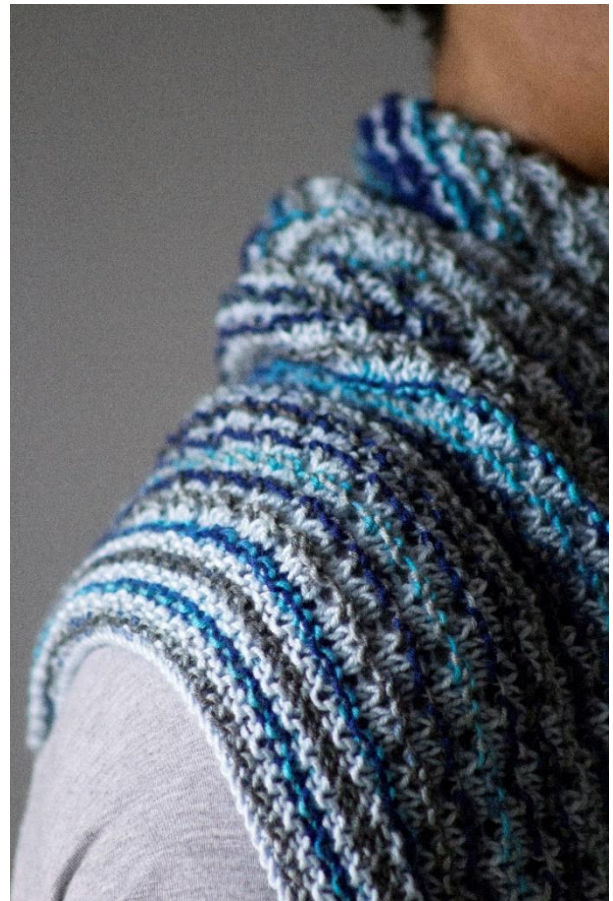
With MC, bind off all sts using the I-Cord method.

FINISHING

Block to finished measurements and weave in ends.

Abbreviations

CC	contrast color
cont	continue
dec('d)	decrease(d)
est'd	established
inc('d)	increase(d)
k	knit
k2tog	knit 2 sts together (1 st dec'd)
m	marker
MC	main color
ndl(s)	needle(s)
p	purl
patt	pattern
pm	place marker
rep	repeat
RS	right side
sl	slip
ssk	slip next 2 sts individually knitwise, slip them back to left needle in this position, knit them together through the back loops (1 st dec'd)
st(s)	stitch(es)
tbl	through back loop
WS	wrong side
yo	yarn over



Knit. Relax. Smile. Repeat!

2018 © Universal Yarn, Inc.

All rights reserved.

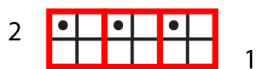
www.universalyarn.com

This pattern may not be reproduced for business, trade or sale.

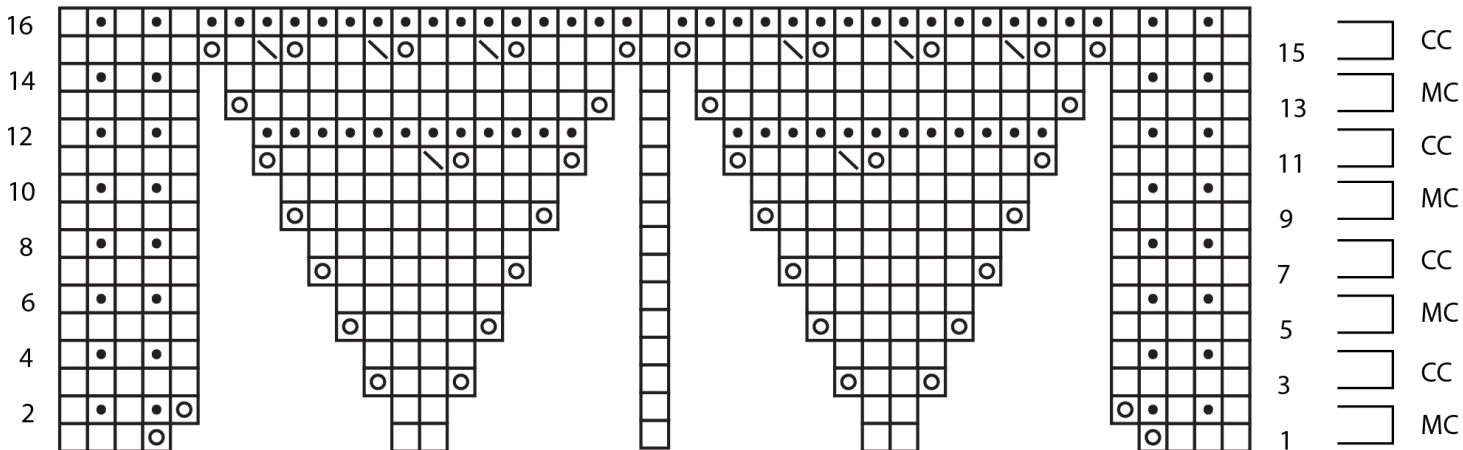
Key

- pattern repeat
- knit on RS, purl on WS
- purl on RS, knit on WS
- yo
- / ssk

Sand Stitch



Increase Chart



Knit. Relax. Smile. Repeat!

2018 © Universal Yarn, Inc.

All rights reserved.

www.universalyarn.com

This pattern may not be reproduced for business, trade or sale.