



Pattern Collection: Women



Templetop Cowl

Designed by Amy Gunderson

FINISHED MEASUREMENTS

Circumference: 27½"

Height: 11½"

MATERIALS

Universal Yarn Amphora (60% acrylic, 20% mohair, 20% alpaca; 100 g/306 yds)

- 106 Caspian (A) – 1 ball
- 109 Lunar (B) – 1 ball

Needles: US Size 4 (3.5 mm) 24" circular

US Size 6 (4 mm) 24" circular

Notions: Stitch markers, tapestry needle

GAUGE

21 sts x 24 rows = 4" in stranded knitting

Save time, check your gauge

Knit. Relax. Smile. Repeat!

2015 © Universal Yarn, Inc.

All rights reserved.

www.universalyarn.com

This pattern may not be reproduced for business, trade or sale.

PATTERN NOTES

This cowl is worked in the round in one piece. Color changes are achieved through the stranded method of knitting. Both colors are used on each row while working the colorwork chart.

COWL

With A and smaller ndl, cast on 144 sts. PM and join to work in the rnd. Purl 1 rnd, knit 1 rnd, purl 1 rnd.

Switch to larger ndl. Work Rows 1-26 of colorwork chart, then rep Rows 9-26, 1 more time, then work Rows 27-47.

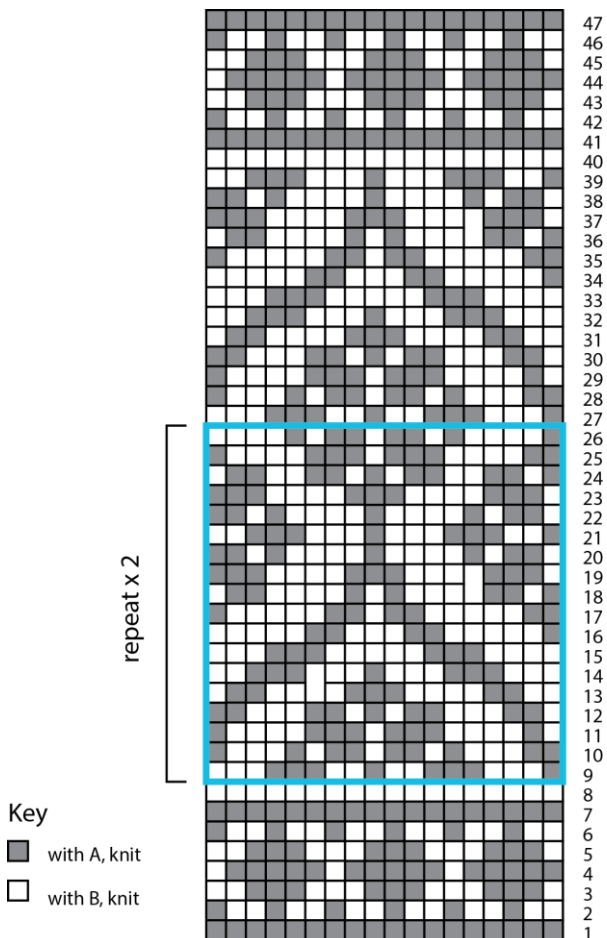
Switch to smaller ndl, break B. With A, [purl 1 rnd, knit 1 rnd] 2 times. Bind off all sts pwise.

FINISHING

Weave in ends and block.

Abbreviations

beg	begin(ning)
CC	contrast color
circ	circular
k	knit
m	marker
MC	main color
meas	measures
ndl	needle
patt	pattern
p	purl
pm	place marker
rnd	round
st(s)	stitch(es)
St st	Stockinette stitch (knit on RS rows, purl on WS rows; in the rnd, knit every rnd)



Knit, Relax, Smile, Repeat!

2015 © Universal Yarn, Inc.

All rights reserved.

www.universalyarn.com

This pattern may not be reproduced for business, trade or sale.