



## PATTERN COLLECTION

### Accessories



#### Tea Leaf Scarf

Designed by Ashley Jane McIntyre

#### SKILL

Crochet

#### DIFFICULTY

Intermediate

#### SIZES

One Size

#### FINISHED MEASUREMENTS

Width: 7"

Length: 56½"

#### MATERIALS

[Universal Yarn Wool Pop](#) (50% bamboo, 35% super wash wool, 15% polyamide; 100g/284 yds)

- 623 Aster - 2 skeins

Hook: US Size G/6 (4 mm) or size needed to obtain gauge

Notions: Tapestry needle

#### GAUGE

20 sts x 13 rows = 4" in half double crochet (hdc) after blocking

2 fans x 8 rows = 4" in Open Fan patt after blocking

Save time, check your gauge.

Knit, Relax, Smile, Repeat!

2023 © Universal Yarn, Inc.

[www.universalyarn.com](http://www.universalyarn.com)

All rights reserved. This pattern may not be reproduced for business, trade or sale.

Questions? Contact [patterns@universalyarn.com](mailto:patterns@universalyarn.com)

## PATTERN NOTES

Inspired by the flowers and herbs that come together to create some of our favorite beverages, the Tea Leaf scarf is a delicate accessory to treasure. Worked in two mirrored pieces that are seamed together, an open fan lace is worked amongst half double crochet, creating a refreshing break in the rhythmic stitch pattern.

Take note of chains at the beginning of rows that count as stitches.

This scarf is worked flat in two separate pieces, beginning at the ends and working towards the center. The two pieces are joined at the center by working an additional row across the second half, held with the first half, joining them together to create a visible seam.

## STITCH GUIDE

### Open Fan

*Ch a multiple of 10 + 7.*

**Row 1:** Sc in 2<sup>nd</sup> ch from hk, \* ch 1, sk 4 chs, {tr, [ch 2, tr] 4 times} in next ch, ch 1, sk 4 chs, sc in next ch; rep from \* until 5 chs rem, ch 1, sk 4 chs, {tr, [ch 2, tr] 2 times} in last ch, turn.

**Row 2:** Ch 1, sc in first st, \* ch 3, sk [ch-2 sp, tr], dc in next ch-2 sp \*\*, ch 2, sk [tr, ch sp, sc, ch sp, tr], dc in next ch-2 sp, ch 3, sk [tr, ch-2 sp], sc in next st; rep from \* across, ending at \*\* when [tr, ch sp, sc] rems, ch 1, sk [tr, ch sp], tr in last st, turn.

**Row 3:** Ch 6 (counts as tr, ch 2), [tr, ch 2, tr] in first st, ch 1, sk [ch sp, dc, ch-3 sp], \* sc in next st, ch 1, sk [ch-3 sp, dc], {tr, [ch 2, tr] 4 times} in next ch-2 sp, ch 1, sk [dc, ch-3 sp]; rep from \* across until 1 st rems, sc in last st, turn.

**Row 4:** Ch 5 (counts as tr, ch 1), sk [ch sp, tr], \* dc in next ch-2 sp, ch 3, sk [tr, ch-2 sp], sc in next st \*\*, ch 3, sk [ch-2 sp, tr], dc in next ch-2 sp, ch 2, sk [tr, ch sp, sc, ch sp, tr]; rep from \* across, ending at \*\*, turn.

**Row 5:** Ch 1, sc in first st, \* ch 1, sk [ch-3 sp, dc], {tr, [ch 2, tr] 4 times} in next ch-2 sp, ch 1, sk [dc, ch-3 sp], sc in next st; rep from \* across until [ch-3 sp, dc, ch sp, tr] rems, ch 1, {tr [ch 2, tr] 2 times} in last st, turn.

Rep Rows 2-5 for patt.

## PATTERN BEGINS

### First Half

Ch 37.

**Row 1:** Hdc in 3<sup>rd</sup> ch from hk (chs count as st) and each ch across, turn – 36 sts.

**Row 2:** Ch 2 (counts as st here and throughout), hdc in next and each st across, turn.

**Rows 3-9:** Rep Row 2.

**Row 10:** Ch 1, sc in first st, \* ch1, sk 4 sts, {tr, [ch 2, tr] 4 times} in next st, ch 1, sk 4 sts, sc in next st; rep from \* until 5 sts rem, ch 1, sk 4 sts, {tr, [ch 2, tr] 2 times} in last st, turn.

**Rows 11-14:** Work Rows 2-5 of Open Fan patt.

**Rows 15-17:** Work Rows 2-4 of Open Fan patt.

**Row 18:** Ch 2, work 35 hdc evenly in ch sps and sts across, turn – 36 sts.

**Row 19-88:** Rep Row 2. Fasten off.

### Second Half

Rep First Half instructions, but do not fasten off.

### Join the Halves

*Align Row 88 of First Half to Row 88 of second half. Work through each stitch of both halves as though it were one stitch.*

**Row 1:** Ch 1, sc through first and each set of sts across. Fasten off.

## FINISHING

Gently wash and block to finished measurements. Weave in ends.

## Abbreviations

*	indicates a repeat section
**	indicates where you will stop on the last repeat
ch	chain
dc	double crochet
hdc	half double crochet
hk	hook
rem(s)	remain(s)
rep	repeat
sc	single crochet
sk	skip
sp	space(s)
st(s)	stitch(es)
tr	treple crochet
patt	pattern

Knit, Relax, Smile, Repeat!

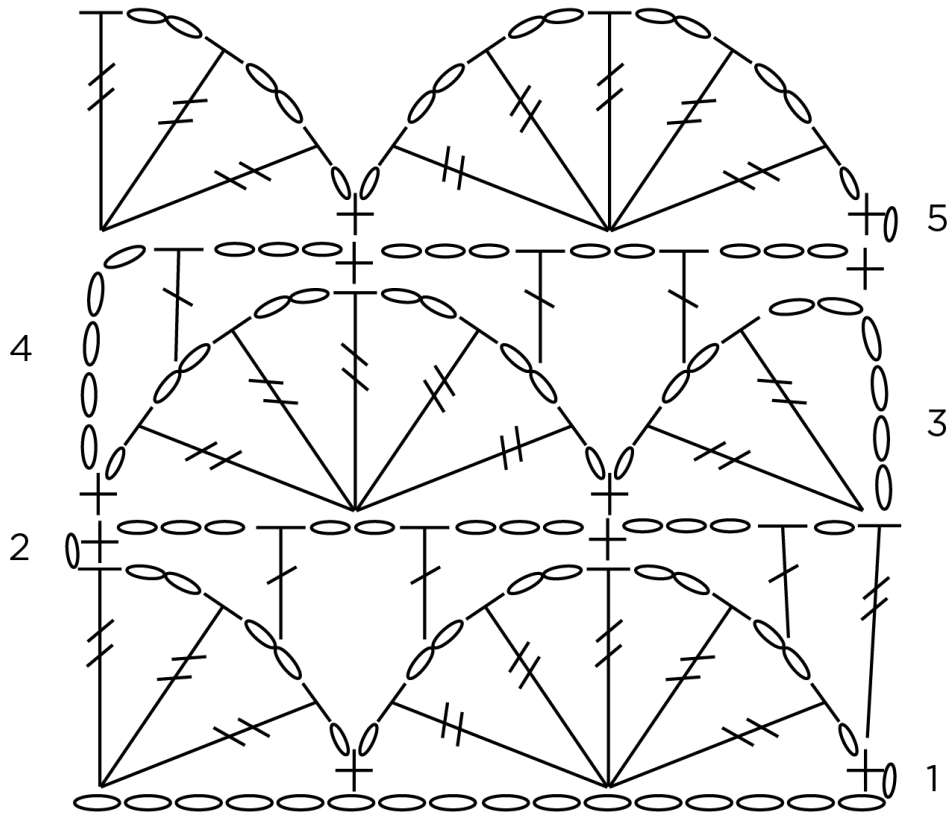
2023 © Universal Yarn, Inc.

[www.universalyarn.com](http://www.universalyarn.com)





All rights reserved. This pattern may not be reproduced for business, trade or sale.

Questions? Contact [patterns@universalyarn.com](mailto:patterns@universalyarn.com)

# Open Fan



## Key

-  ch
-  sc
-  dc
-  tr

Knit, Relax, Smile, Repeat!

2023 © Universal Yarn, Inc.

[www.universalyarn.com](http://www.universalyarn.com)

All rights reserved. This pattern may not be reproduced for business, trade or sale.

Questions? Contact [patterns@universalyarn.com](mailto:patterns@universalyarn.com)