



Pattern Collection: Men



TNNA Vest

Designed by Amy Gunderson

SIZES

Small (Medium, Large, 1X, 2X, 3X, 4X)
Shown in Large size modeled with 8" of positive ease.

FINISHED MEASUREMENTS

Chest: 34¾ (37¾, 42¼, 46¾, 51½, 56, 59)"
Length: 22¾ (23½, 24¼, 25, 25¾, 26¼, 26¾)"

MATERIALS

Universal Yarn Bamboo Pop (50% bamboo, 50% cotton; 100g/292 yds)

- 107 Ocean – 3 (3, 4, 4, 4, 5, 5) skeins

Needle: US Size 4 (3.5 mm) straight, 16" circular (for neck edging) or size needed to obtain gauge

Notions: Stitch markers, removable marker, tapestry needle

GAUGE

21 sts x 28 rows = 4" in Seed Stitch
Save time, check your gauge.

Knit. Relax. Smile. Repeat!

2018 © Universal Yarn, Inc.

All rights reserved.

www.universalyarn.com

This pattern may not be reproduced for business, trade or sale.

PATTERN NOTES

This vest complements our TNNA Cardi that was worn by staff during the show in 2016. With TNNA coming up in just a week, we thought there was no better way to celebrate than by releasing the TNNA vest. Worked in Bamboo Pop, this gansey-inspired vest is perfect for warmer weather. The textured, knit-purl stitch patterns really pop – what else would you expect from a garment knit in Bamboo Pop?

The TNNA Vest is worked flat and seamed. For your convenience, the stitch patterns are both charted and written.

STITCH GUIDE

Right Twist (RT): K2tog but do not slip st from ndl, knit the first st again, slip both sts from ndl.

Left Twist (LT): Knit the second st on the left ndl through the back loop, knit the first st through the front loop, slip both sts from ndl.

K1, P1 Ribbing

(odd number of sts)

Row 1 (RS): * K1, p1; rep from * to last st, k1.

Row 2 (WS): P1, * k1, p1; rep from * to end.

Rep Rows 1-2 for patt.

Seed Stitch

(odd number of sts)

Row 1: * K1, p1; rep from * to last st, k1.

Rep Row 1 for patt.

Right Panel

(panel of 18 sts)

Row 1 (RS): P1, LT, p9, k5, p1.

Row 2 (WS): K1, p5, k1, p1, k5, p1, k1, p2, k1.

Row 3: P1, LT, p1, k2, p3, k2, p1, k5, p1.

Row 4: K7, p3, k1, p3, k1, p2, k1.

Row 5: P1, LT, p1, k7, p1, k5, p1.

Row 6: K1, p5, k1, p7, k1, p2, k1.

Row 7: P1, LT, p9, k5, p1.

Row 8: K7, p1, k5, p1, k1, p2, k1.

Row 9: P1, LT, p1, k2, p3, k2, p1, k5, p1.

Row 10: K1, p5, k1, p3, k1, p3, k1, p2, k1.

Row 11: P1, LT, p1, k7, p1, k5, p1.

Row 12: K7, p7, k1, p2, k1.

Rep Rows 1-12 for patt.

Left Panel

(panel of 18 sts)

Row 1 (RS): P1, k5, p9, RT, p1.

Row 2: K1, p2, k1, p1, k5, p1, k1, p5, k1.

Row 3: P1, k5, p1, k2, p3, k2, p1, RT, p1.

Row 4: K1, p2, k1, p3, k1, p3, k7.

Row 5: P1, k5, p1, k7, p1, RT, p1.

Row 6: K1, p2, k1, p7, k1, p5, k1.

Row 7: P1, k5, p9, RT, p1.

Row 8: K1, p2, k1, p1, k5, p1, k7.

Row 9: P1, k5, p1, k2, p3, k2, p1, RT, p1.

Row 10: K1, p2, k1, p3, k1, p3, k1, p5, k1.

Row 11: P1, k5, p1, k7, p1, RT, p1.

Row 12: K1, p2, k1, p7, k7.

Rep Rows 1-12 for patt.

Center Panel

(panel of 35 sts)

Row 1 (RS): [P1, LT] 2 times, p1, k2, p2, k4, p2, k1, p2, k4, p2, k2, p1, [RT, p1] 2 times.

Row 2 (WS): [K1, p2] 2 times, k1, p1, k2, p4, k2, p3, k2, p4, k2, p1, k1, [p2, k1] 2 times.

Row 3: [P1, LT] 2 times, p3, k4, p2, k5, p2, k4, p3, [RT, p1] 2 times.

Row 4: [K1, p2] 2 times, k1, p5, k2, p7, k2, p5, k1, [p2, k1] 2 times.

Row 5: [P1, LT] 2 times, p1, k4, p2, k4, p1, k4, p2, k4, p1, [RT, p1] 2 times.

Row 6: [K1, p2] 2 times, k1, p3, k2, p4, k3, p4, k2, p3, k1, [p2, k1] 2 times.

Rep Rows 1-6 for patt.

BACK

Cast on 93 (101, 113, 125, 137, 149, 157) sts.

Work in K1, P1 Ribbing until piece meas 1½" from cast-on edge, ending with WS row.

Establish Pattern

Row 1 (RS): K1, work Seed Stitch over 3 (7, 11, 17, 23, 27, 31) sts, pm, work Right Panel over 18 sts, pm, work Seed Stitch over 7 (7, 9, 9, 9, 11, 11) sts, pm, work Center Panel over 35 sts, pm, work Seed Stitch over 7 (7, 9, 9, 9, 11, 11) sts, pm, work Left panel over 18 sts, pm, work Seed Stitch over 3 (7, 11, 17, 23, 27, 31) sts, k1.

Row 2 (WS): Slipping ms as you encounter them, p1, work Seed Stitch to m, work Left Panel to m, work Seed Stitch to m, work Center Panel to m,

Knit. Relax. Smile. Repeat!

2018 © Universal Yarn, Inc.

All rights reserved.

www.universalyarn.com

This pattern may not be reproduced for business, trade or sale.

work Seed Stitch to m, work Right Panel to m, work Seed Stitch to last st, p1.

Cont as est'd until piece meas 14½ (14¾, 15, 15¼, 15½, 15¾, 16)" from cast-on edge, ending with WS row.

Shape Armholes

Bind off 2 (3, 4, 5, 6, 7, 7) sts at beg of next 2 rows, 2 (2, 3, 3, 4, 6, 6) sts at beg of next 2 rows, and 2 (2, 2, 3, 4, 4, 6) sts at beg of next 2 rows – 81 (87, 95, 103, 109, 115, 119) sts rem.

Dec row (RS): K1, k2tog, work in patt to last 3 sts, ssk, k1 – 2 sts dec'd, 79 (85, 93, 101, 107, 113, 117) sts rem. Rep Dec row every RS row, 4 (4, 5, 7, 8, 10, 11) more times – 71 (77, 83, 87, 91, 93, 95) sts rem. Work even in patt until Armhole meas 7¼ (7¾, 8¼, 8¾, 9¼, 9½, 9¾)" , ending with WS row.

Shape Neck

Row 1 (RS): Work in patt over 20 (22, 25, 26, 27, 28, 29) Right Shoulder sts, attach new ball of yarn and bind off center 31 (33, 33, 35, 37, 37, 37) sts, work in patt over rem 20 (22, 25, 26, 27, 28, 29) Left Shoulder sts. Place Right Shoulder sts on holder.

Row 2 (WS dec): Work in patt to last 3 sts, p2tog, p1 – 1 st dec'd, 19 (21, 24, 25, 26, 27, 28) sts rem.

Row 3 (RS dec): K1, k2tog, work in patt to end – 1 st dec'd, 18 (20, 23, 24, 25, 26, 27) sts rem.

Rows 4-6: Cont to dec every row – 15 (17, 20, 21, 22, 23, 24) sts rem. Bind off all sts.

Return held Right Shoulder sts to ndl.

Row 1 (WS): P1, ssp, work in patt to end – 1 st dec'd, 19 (21, 24, 25, 26, 27, 28) sts rem.

Row 2 (RS): Work in patt to last 3 sts, ssk, k1 – 1 st dec'd, 18 (20, 23, 24, 25, 26, 27) sts rem.

Rows 3-5: Cont to dec every row – 15 (17, 20, 21, 22, 23, 24) sts rem. Bind off all sts.

FRONT

Work as for Back until Armhole meas 3 (3½, 3¾, 4¼, 4½, 4¾, 4¾)" , ending with WS row.

Shape Left Front Neck

Row 1 (RS dec): Work in patt over 32 (35, 38, 40, 42, 43, 44) Left Front sts, ssk, k1, place next (center) st on safety pin or removable marker, place rem 35 (38, 41, 43, 45, 46, 47) Right Front

sts on holder – 34 (37, 40, 42, 44, 45, 46) Left Front sts rem.

Row 2 (WS dec): P1, ssp, work in patt to end – 1 st dec'd, 33 (36, 39, 41, 43, 44, 45) sts rem.

Cont to work a dec at neck edge every row, 8 (10, 8, 10, 10, 10, 10) more times, then work a dec at neck edge every RS row, 10 (9, 11, 10, 11, 11, 11) times – 15 (17, 20, 21, 22, 23, 24) sts rem. Work even in patt until Armhole meas 8¼ (8¾, 9¼, 9¾, 10¼, 10½, 10¾)" , ending with WS row. Bind off all sts.

Shape Right Front Neck

Return sts to ndl.

Row 1 (RS dec): K1, k2tog, work in patt to end – 34 (37, 40, 42, 44, 45, 46) sts rem.

Row 2 (WS dec): Work in patt to last 3 sts, p2tog, p1 – 1 st dec'd, 33 (36, 39, 41, 43, 44, 45) sts rem. Cont to work a dec at neck edge every row, 8 (10, 8, 10, 10, 10, 10) more times, then work a dec at neck edge every RS row, 10 (9, 11, 10, 11, 11, 11) times – 15 (17, 20, 21, 22, 23, 24) sts rem. Work even in patt until Armhole meas 8¼ (8¾, 9¼, 9¾, 10¼, 10½, 10¾)" , ending with WS row. Bind off all sts.

FINISHING

Weave in ends. Block pieces to finished measurements. Sew Shoulder seams.

Neck Edging

With RS facing and circ ndl, pick up and knit 34 (34, 36, 36, 38, 38, 40) sts along Left Front Neck, pm, knit held center st, pm, pick up and knit 34 (34, 36, 36, 38, 38, 40) sts along Right Front Neck, 6 sts along side of Back Neck, 31 (33, 33, 35, 37, 37, 37) sts along Back Neck bind-off edge, and 6 sts along side of Back Neck – 112 (114, 118, 120, 126, 126, 130) sts. PM and join to work in the rnd.

Rnd 1: [K1, p1] to m st, sl m, k1, sl m, [p1, k1] to last st, k1.

112

Rnd 2 (dec): Work in est'd rib to 2 sts bef m, ssk, sl m, k1, sl m, k2tog, work in est'd rib to end – 2 sts dec'd, 110 (112, 116, 118, 124, 124, 128) sts rem.

Rnd 3: Work in est'd rib to end.

Knit. Relax. Smile. Repeat!

2018 © Universal Yarn, Inc.

All rights reserved.

www.universalyarn.com

This pattern may not be reproduced for business, trade or sale.

Rnds 4-5: Rep Rnds 2-3 – 108 (110, 114, 116, 122, 122, 126) sts rem.

Rnd 6: Rep Rnd 2 – 106 (108, 112, 114, 120, 120, 124) sts rem.

Bind off all sts in patt.

Armhole Edging

With RS facing, pick up and knit 95 (103, 111, 123, 135, 143, 151) sts evenly along Armhole edge. Work in K1, P1 Ribbing for 5 rows. Bind off all sts in patt.

Weave in rem ends.

Abbreviations

circ	circular
cont	continue
dec('d)	decrease(d)
est'd	established
k	knit
k2tog	knit 2 stitches together (1 st dec'd)
m	marker
meas	measures
ndl	needle
p	purl
p2tog	purl 2 sts together (1 st dec'd)
patt	pattern
pm	place marker
rem	remain(ing)
rep	repeat
rnd	round
RS	right side
sl	slip
ssk	slip next 2 sts individually knitwise, slip them back to left needle in this position, knit them together through the back loops (1 st dec'd)
ssp	slip next 2 sts individually knitwise, slip them back to left needle in this position, purl them together through the back loops (1 st dec'd)
st(s)	stitch(es)
WS	wrong side



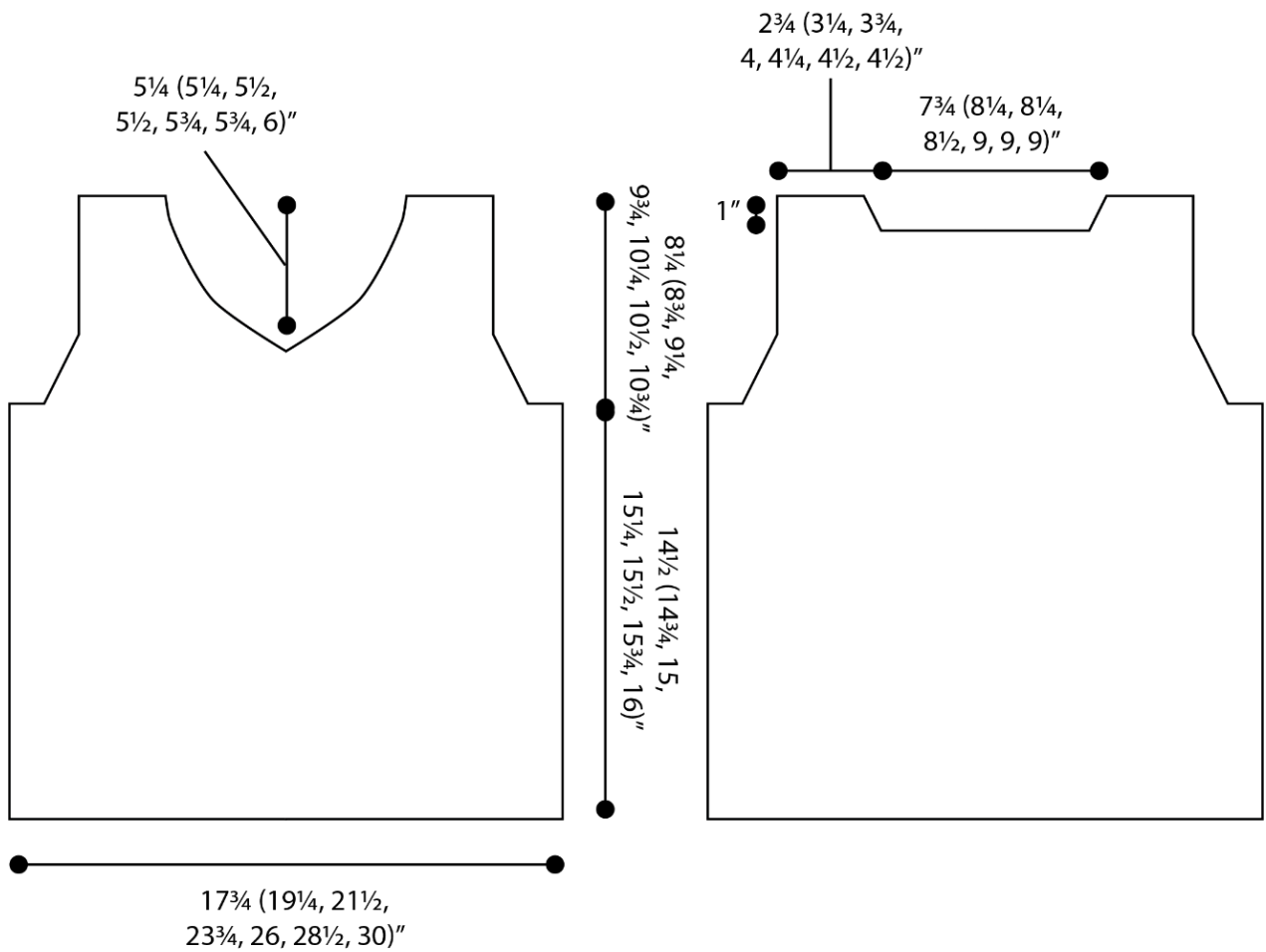
Knit. Relax. Smile. Repeat!

2018 © Universal Yarn, Inc.

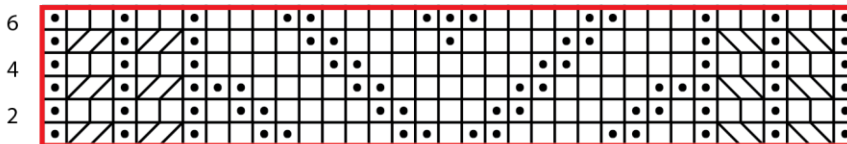
All rights reserved.

www.universalyarn.com

This pattern may not be reproduced for business, trade or sale.



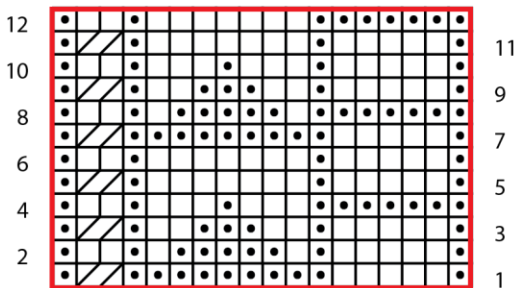
Center Panel



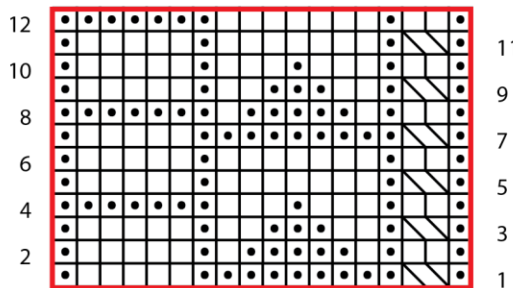
Key

- knit on right side, purl on wrong side
- purl on right side, knit on wrong side
- 1x1 LT
- 1x1 RT
- pattern repeat

Left Panel



Right Panel



Knit. Relax. Smile. Repeat!

2018 © Universal Yarn, Inc.

All rights reserved.

www.universalyarn.com

This pattern may not be reproduced for business, trade or sale.