



## PATTERN COLLECTION

### Home



#### Sunshine Throw

Designed by Rachel Brockman

#### SKILL

Knitting

#### DIFFICULTY

Easy

#### SIZES

One Size

#### FINISHED MEASUREMENTS

Width: 37½"

Length: 39"

#### MATERIALS

[Universal Yarn Cotton Supreme](#) (100% cotton; 100g / 180 yds)

- 520 Yellow - 10 skeins

**Needle:** US Size 10 (6 mm) 32" circular or longer (to accommodate large number of sts) *or size needed to obtain gauge*

**Notions:** Tapestry needle, stitch markers

#### GAUGE

13 sts x 19 rows = 4" in Sunshine Lace patt with yarn held double

**Save time, check your gauge.**

Knit, Relax, Smile, Repeat!

2024 © Universal Yarn, Inc.

[www.universalyarn.com](http://www.universalyarn.com)

All rights reserved. This pattern may not be reproduced for business, trade or sale.

Questions? Contact [patterns@universalyarn.com](mailto:patterns@universalyarn.com)

## PATTERN NOTES

The Sunshine Throw is quite an elegant baby blanket perfectly fit for any nursery or living room. Knit flat in Cotton Supreme held double, it has a smooth texture and gloriously soft cotton fibers. It is a wonderful fit for baby's little hands and skin, but the lace pattern looks delicate and graceful for everyone to enjoy and fun for you to knit!

This blanket is knit flat from the bottom up. The instructions are written and charted for your convenience. Hold two strands together as one throughout this project.

## STITCH GUIDE

### Sunshine Lace

(multiple of 17 sts)

**Row 1 (RS):** \* K3, k2tog, k3, yo, k1, yo, k3, ssk, k3; rep from \* to end.

**WS Rows 2-8:** Purl.

**Row 3:** \* K2, k2tog, [k3, yo] 2 times, k3, ssk, k2; rep from \* to end.

**Row 5:** \* K1, k2tog, k3, yo, k5, yo, k3, ssk, k1; rep from \* to end.

**Row 7:** \* K2tog, k3, yo, k7, yo, k3, ssk; rep from \* to end.

Rep rows 1-8 for patt.

## BLANKET

### Lower Border

Cast on 125 sts.

**Row 1 (RS):** Knit.

**Rnd 2 (WS):** Knit.

Rep rows 1-2, 3 more times.

### Sunshine Lace Section

*Note: You may choose to place markers between pattern repeats to help you stay on track.*

**Row 1 (RS):** K3, pm, work Row 1 of Sunshine Lace patt to last 3 sts, pm, k3. Patt will be repeated 7 times across each row.

**Row 2 (WS):** K3, sl m, work Row 2 of Sunshine Lace patt to m, sl m, k 3.

Cont as est'd through Row 8 of Sunshine Lace patt, then rep Rows 1-8 of Sunshine Lace patt 20 more times.

### Upper Border

**Row 1 (RS):** Knit.

**Row 2 (WS):** Knit.

Rep rows 1-2, 3 more times. Bind off all sts kwise.

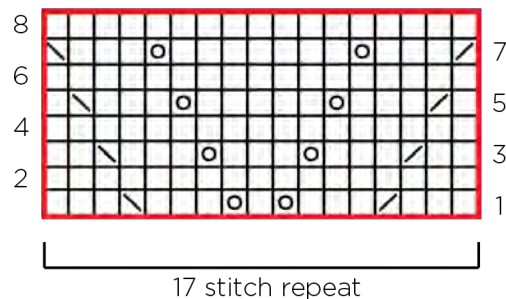
## FINISHING

Gently wash and block to finished measurements. Weave in ends.






## Abbreviations

cont	continue
est'd	established
k	knit
k2tog	knit 2 stitches together (1 st dec'd)
kwise	knitwise
m	marker
p	purl
pm	place marker
rep	repeat
RS	right side
sl	slip
ssk	slip next 2 sts individually knitwise, slip them back to left needle in this position, knit them together through the back loops (1 st dec'd)
st(s)	stitch(es)
WS	wrong side
yo	yarn over

## Sunshine Lace



## Key

-  pattern repeat
-  knit on RS, purl on WS
-  k2tog
-  yarnover
-  ssk

Knit, Relax, Smile, Repeat!

2024 © Universal Yarn, Inc.

[www.universalyarn.com](http://www.universalyarn.com)

All rights reserved. This pattern may not be reproduced for business, trade or sale.

Questions? Contact [patterns@universalyarn.com](mailto:patterns@universalyarn.com)