



Pattern Collection: Home



Summer Leaves Cloths

Designed by Universal Yarn Design Team

FINISHED MEASUREMENTS

7¾" square

MATERIALS

Universal Yarn *Cotton Supreme* (100% cotton; 100g/180 yds

- 632 Orchid (A), 630 Sulphur (B), 633 Ocean (C) – 1 hank makes 3 cloths

Needle: US Size 6 (4 mm) straight or size needed to obtain gauge

Notions: Tapestry needle, stitchmarkers

GAUGE

18 sts x 24 rows = 4" in St st

Save time, check your gauge.

Knit, Relax, Smile, Repeat!

2015 © Universal Yarn, Inc.

All rights reserved.

www.universalyarn.com

This pattern may not be reproduced for business, trade or sale.

STITCH GUIDE

Leaf Lace 3

(multiple of 8 sts + 3)

Row 1 (RS): K1, * yo, ssk, k6; rep from * to last 2 sts, k2.

WS Rows 2-16: Purl.

Rows 3, 5, & 7: K1, * k1, yo, k2, sl2-k1-p2sso, k2, yo; rep from * to last 2 sts, k2.

Row 9: K3, * k2, yo, ssk, k4; rep from * to end.

Rows 11, 13, & 15: K1, k2tog, k1, * k1, yo, k1, yo, k2, sl2-k1-p2sso, k1; rep from * to last 7 sts, [k1, yo] 2 times, k2, ssk, k1.

Rep Rows 1-16 for patt.

LEAF LACE 1 CLOTH PATTERN

With A, cast on 35 sts. Knit 6 rows.

Establish Pattern

Row 1 (RS): K4, pm, work Row 1 of Leaf Lace 1 chart to last 4 sts, pm, k4.

Row 2 (WS): K4, work Row 2 of Leaf Lace 1 chart to last 4 sts, k4.

Rows 3-40: Cont in patt as est'd through Row 40 of chart.

Knit 7 rows. Bind off all sts over the next WS row.



LEAF LACE 2 CLOTH PATTERN

With B, cast on 36 sts. Knit 6 rows.

Establish Pattern

Row 1 (RS): K4, pm, work Row 1 of Leaf Lace 2 chart to last 4 sts, pm, k4.

Row 2 (WS): K4, work Row 2 of Leaf Lace 2 chart to last 4 sts, k4.

Rows 3-40: Cont in patt as est'd through Row 40 of chart.

Knit 7 rows. Bind off all sts over the next WS row.



Knit. Relax. Smile. Repeat!

2015 © Universal Yarn, Inc.

All rights reserved.

www.universalyarn.com

This pattern may not be reproduced for business, trade or sale.

LEAF LACE 3 CLOTH PATTERN

With C, cast on 35 sts. Knit 6 rows.

Row 1 (RS): K4, pm, work Row 1 of Leaf Lace 3 patt to last 4 sts, pm, k4.

Row 2 (WS): K4, work Row 2 of Leaf Lace 3 patt to last 4 sts, pm, k4.

Cont in patt as est'd through Row 16 of patt, then rep Rows 1-16, 1 more time, then rep Rows 1-8, 1 more time.

Knit 7 rows. Bind off all sts over the next WS row.



FINISHING

Weave in ends and block.

Abbreviations

approx	approximately
cont	continue
dec('d)	decrease(d)
est'd	established

inc('d)	increase(d)
k	knit
k2tog	knit 2 stitches together (1 st dec'd)
k3tog	knit 3 stitches together (2 sts dec'd)
knitwise	knitwise
LH	left hand
LPT	Purl the second st on the left ndl tbl, knit the first st on the left ndl through the front loop, slip both sts from ndl.
m	marker
ndl	needle
patt	pattern
p	purl
pm	place marker
p2sso	pass 2 slipped stitches over
rem	remain(ing)
rep	repeat
RPT	k2tog but do not slip st from left ndl, purl the first st on the left ndl through the front loop, slip both sts from ndl.
RS	right side
sl	slip
ssk	slip next 2 sts individually knitwise, slip them back to left needle in this position, knit them together through the back loops (1 st dec'd)
sssk	slip next 3 sts individually knitwise, slip them back to left needle in this position, knit them together through the back loops (2 sts dec'd)
st(s)	stitch(es)
St st	Stockinette stitch (knit on RS rows, purl on WS rows; in the rnd, knit every rnd)
tbl	through the back loop(s)
tog	together
WS	wrong side
yo	yarn over

Knit. Relax. Smile. Repeat!

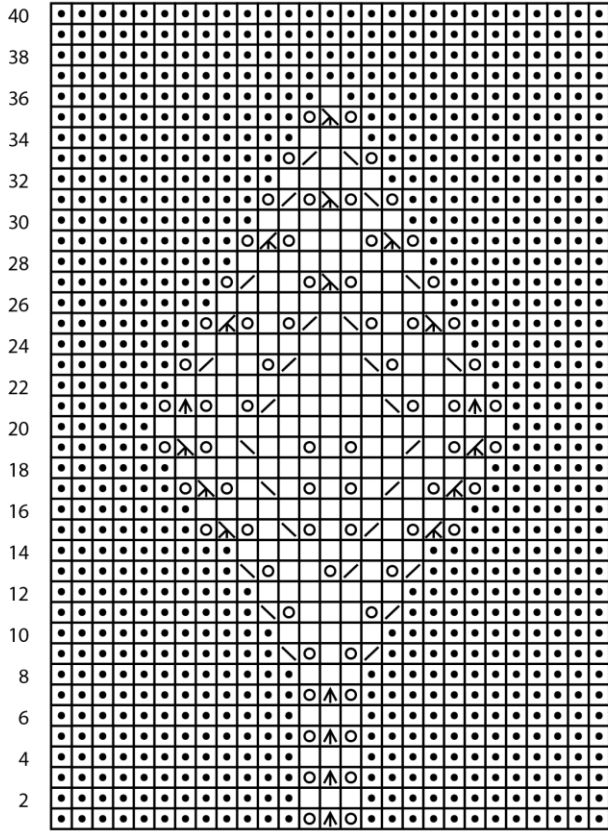
2015 © Universal Yarn, Inc.

All rights reserved.

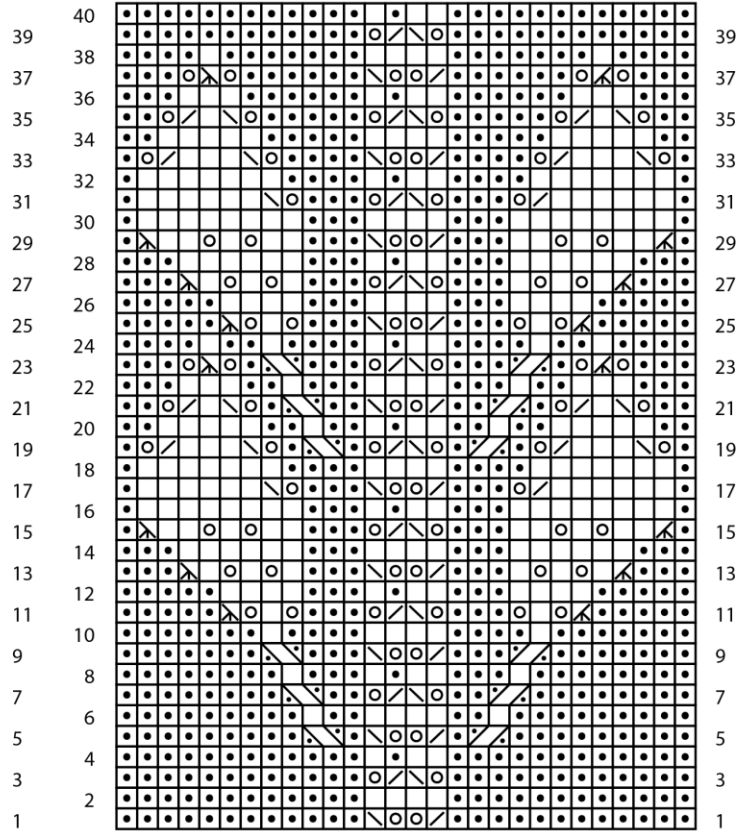
www.universalyarn.com

This pattern may not be reproduced for business, trade or sale.

Leaf Lace 1



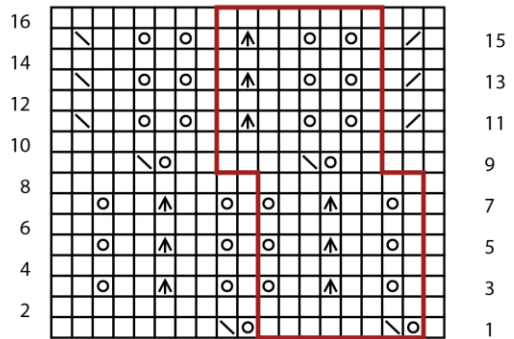
Leaf Lace 2



Key

-  knit on RS, purl on WS
-  purl on RS, knit on WS
-  k2tog
-  ssk
-  k3tog
-  sssk
-  sl2-k1-p2sso
-  RPT
-  LPT
-  pattern repeat

Leaf Lace 3



Knit. Relax. Smile. Repeat!

2015 © Universal Yarn, Inc.

All rights reserved.

www.universalyarn.com

This pattern may not be reproduced for business, trade or sale.