



## Pattern Collection: Accessories



### Strawberry Kiwi Scarfarita

Designed by Rachel Brockman

#### SIZE

One

#### FINISHED MEASUREMENTS

**Length:** 107¼"

**Width:** 9¼"

#### MATERIALS

**Fibra Natura Lina** (68% linen, 32% cotton;  
100g/252 yds)

- 103 Citrus (A) – 2 skeins
- 101 Amaranth (B) – 2 skeins

**Needles:** US Size 5 (3.75 mm) straight or  
*size needed to obtain gauge*

**Notions:** Tapestry needle

#### GAUGE

20 sts x 24 rows = 4" in Eyelet patt

**Save time check your gauge.**

## PATTERN NOTES

Just because the weather gets warmer doesn't mean we have to stop wearing our knitting! Case in point – this open, meshy scarf. It's knit in a sportweight linen and cotton blend, perfect for those summer months. Irregular stripes add a funky and fun look to a very simple lace project. The stitch pattern is just a two row repeat. An increase is worked at the beginning of right side rows, while a corresponding decrease is worked at the end of the same rows, causing the fabric to bias.

## STITCH GUIDE

### Mesh

(multiple of 2 plus 7 sts)

**Row 1 (RS):** K2, kfb, \* k2tog, yo; rep from \* to last 4 sts, ssk, k2.

**Row 2 (WS):** Knit.

Rep Rows 1-2 for patt.

## SCARF

### Stripe 1

With Color A, cast on 47 sts.

**Row 1 (RS):** K2, kfb, knit to last 4 sts, k1, ssk, k2.

**Row 2 (WS):** Knit.

Rep Rows 1-2, 2 more times.

Work in Mesh patt until piece meas 13" from cast-on edge, ending with a WS row.

### Stripe 2

Change to Color B.

Work in Mesh patt until piece meas 11½" from last color change, ending with a WS row.

### Stripe 3

Change to Color A.

Work in Mesh patt until piece meas 5¼" from last color change, ending with a WS row.

### Stripe 4

Change to Color B.

Work in Mesh patt until piece meas 8" from last color change, ending with a WS row.

### Stripe 5

Change to Color A.

Work in Mesh patt until piece meas 6" from last color change, ending with a WS row.

### Stripe 6

Change to Color B.

Work in Mesh patt until piece meas 4" from last color change, ending with a WS row.

### Stripe 7

Change to Color A.

Work in Mesh patt until piece meas 2½" from last color change, ending with a WS row.

### Stripe 8

Change to Color B.

Work in Mesh patt until piece meas 2" from last color change, ending with a WS row.

### Stripe 9

Change to Color A.

Work in Mesh patt until piece meas 4" from last color change, ending with a WS row.

### Stripe 10

Change to Color B.

Work in Mesh patt until piece meas 6" from last color change, ending with a WS row.

### Stripe 11

Change to Color A.

Work in Mesh patt until piece meas 8" from last color change, ending with a WS row.

### Stripe 12

Change to Color B.

Work in Mesh patt until piece meas 11½" from last color change, ending with a WS row.

### Stripe 13

Change to Color A.

Work in Mesh patt until piece meas 11½" from last color change, ending with a WS row.

### Stripe 14

Change to Color B.

*Knit. Relax. Smile. Repeat!*

2018 © Universal Yarn, Inc.

All rights reserved.

[www.universalyarn.com](http://www.universalyarn.com)

This pattern may not be reproduced for business, trade or sale.



## Abbreviations

<b>k</b>	knit
<b>k2tog</b>	knit 2 stitches together (1 st dec'd)
<b>kfb</b>	knit into front and back of next st (1 st inc'd)
<b>kwise</b>	knitwise
<b>meas</b>	measures
<b>patt</b>	pattern
<b>rep</b>	repeat
<b>RS</b>	right side
<b>ssk</b>	slip next 2 sts individually knitwise, slip them back to left needle in this position, knit them together through the back loops (1 st dec'd)
<b>st(s)</b>	stitch(es)
<b>WS</b>	wrong side
<b>yo</b>	yarn over

Work in Mesh patt until piece meas 13½" from last color change, ending with a WS row.

### Border

**Row 1 (RS):** K2, kfb, knit to last 4 sts, k1, ssk, k2.

**Row 2 (WS):** Knit.

Rep Rows 1-2, 2 more times.

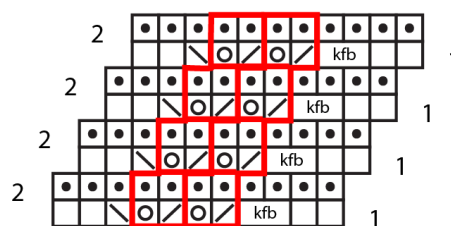
Loosely bind off all sts kwise.

### FINISHING

Weave in ends but do not trim. Wet or steam block, stretching to finished measurements.

Once piece is fully dry, trim ends close to work.

## Mesh



## Key

	pattern repeat		ssk
	knit on RS, purl on WS		k2tog
	purl on RS, knit on WS		kfb
	yo		

*Knit. Relax. Smile. Repeat!*

2018 © Universal Yarn, Inc.

All rights reserved.

[www.universalyarn.com](http://www.universalyarn.com)

This pattern may not be reproduced for business, trade or sale.