



PATTERN COLLECTION

Accessories



Starling Set

Designed by Aubrey Busek

SKILL

Knitting

DIFFICULTY

Easy

SIZES

Hat: Teen (Adult Small/Medium, Adult Large)

Cowl: One Size

Hat shown in Adult Small/Medium size.

FINISHED MEASUREMENTS

Hat

Brim Circumference: 16 (18¾, 21½)''

Stretches to approx 18 (21, 23)''

Length (excluding pom pom): 9''

Cowl

Circumference: 24''

Length: 12''

MATERIALS

Universal Yarn [Kingston Tweed](#) (50% wool, 25% alpaca, 25% viscose; 50g/194 yds)

- 119 Zircon (A) - 1 skein
- 117 Petalite (B) - 1 skein

Needles: US Size 6 (4 mm) 16'' circular and set of dpns or your preferred ndl for knitting small circumferences *or size needed to obtain gauge*

US Size 5 (3.75 mm) 16'' circular

Notions: Tapestry needle, *optional:* 3'' pom pom maker

GAUGE

24 sts x 40 rows = 4'' in Linen St

Save time, check your gauge.

Knit, Relax, Smile, Repeat!

2023 © Universal Yarn, Inc.

www.universalyarn.com

All rights reserved. This pattern may not be reproduced for business, trade or sale.

Questions? Contact patterns@universalyarn.com

PATTERN NOTES

Simple textured stitch patterns and beautiful yarn collide in the Starling Set. Using two colors of our Kingston Tweed yarn, this relaxing pattern results in a hat and cowl set you'll reach for whenever there is a chill in the air.

This hat and cowl set is knit in the round from the bottom up. A pom pom can be added to the hat as an optional finishing step.

STITCH GUIDE

K1, P1 Rib

(multiple of 2 sts)

Rnd 1: * K1, p1; rep from * to end.

Rep Rnd 1 for patt.

Linen Stitch

(multiple of 2 sts,)

Rnd 1: With color A, * sl 1 wyif, k1; rep from * to end.

Rnd 2: With color A, * k1, sl 1 wyif; rep from * to end.

Rnd 3: With color B, * sl 1 wyif, k1; rep from * to end.

Rnd 4: With color B, * k1, sl 1 wyif; rep from * to end.

Rep Rnds 1-4 for patt.

PATTERN BEGINS

HAT

Brim

With color A and smaller ndl, cast on 96 (112, 128) sts. PM and join to knit in the rnd, being careful not to twist.

Work in K1, P1 Rib until piece meas approx 1½" from cast-on edge. Join color B, do not break color A. Change to larger ndl.

Main Hat

Work in Linen Stitch until piece meas. approx. 7¾" from cast-on edge ending with Rnd 4 of patt. Break color A, continue with color B only.

Crown Shaping

Note 1: Change to DPNs or your preferred needles for knitting small circumferences when you no longer have enough sts to fit comfortably on 16" circ ndl.

Rnd 1: With color B, * k2tog; rep from * to end - 48 (56, 64) sts dec'd, 48 (56, 64) sts rem.

Rnd 2: Rep Rnd 1 - 24 (28, 32) sts dec'd, 24 (28, 32) sts rem.

Break yarn leaving approx 16" tail. Thread tail through rem live sts 2 times and pull taut to close, cinching the crown of the hat.

COWL

With color A and smaller ndl, cast on 144 sts.

Lower Border

Work in K1, P1 rib until piece meas. approx. 1" from cast-on edge. Join color B, do not break color A. Change to larger ndl.

Main Cowl

Work in Linen Stitch until piece meas. approx. 10" from cast-on edge ending with Rnd 4 of patt. Break color B, cont with color A only. Change to smaller ndl.

Upper Border

With smaller ndl and color A, work in K1, P1 rib until piece meas. approx. 11" from cast-on edge. Bind off all sts in patt.

FINISHING

Gently wash and block hat and cowl to finished measurements. Weave in ends. If desired, using color B and a 3" pom pom maker, make a pom pom and attach it to the crown of the hat.

Knit, Relax, Smile, Repeat!

2023 © Universal Yarn, Inc.

www.universalyarn.com

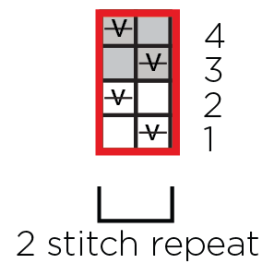
All rights reserved. This pattern may not be reproduced for business, trade or sale.

Questions? Contact patterns@universalyarn.com




Abbreviations

approx.	approximately
circ	circular
dec('d)	decrease(d)
dpn(s)	double pointed needle(s)
k	knit
k2tog	knit 2 stitches together (1 st dec'd)
m	marker
meas	measures
ndl	needle
p	purl
pm	place marker
rem	remain(ing)
rep	repeat
rnd	round
RS	right side
sl	slip
ssk	slip next 2 sts individually knitwise, slip them back to left needle in this position, knit them together through the back loops (1 st dec'd)
st(s)	stitch(es)
wyif	with yarn held in front

Linen Stitch



Key

-  pattern repeat
-  with color A, knit
-  with color A, sl 1 wyif
-  with color B, knit
-  with color B, sl 1 wyif

Knit, Relax, Smile, Repeat!

2023 © Universal Yarn, Inc.

www.universalyarn.com

All rights reserved. This pattern may not be reproduced for business, trade or sale.

Questions? Contact patterns@universalyarn.com