



Stagione

Stagione

Designed by
Courtney Spainhower

SIZES

Extra Small (Small, Medium, Large, 1X,
2X, 3X, 4X, 5X, 6X)

*Shown in Small size modeled with
approx. 8" of positive ease at bust.*

FINISHED MEASUREMENTS

Bust: 38 (41, 44, 47, 50, 53, 56, 59, 62,
65)"

Length: 22½ (23¼, 23¾, 24¼, 24¾,
24½, 24½, 24¾, 25¼, 25¾)" measured
down from center back to hem

MATERIALS

Universal Yarn Wool Pop (50%
bamboo, 35% superwash wool, 15%
polyamide; 100g/284 yds)

- 615 Sage – 4 (5, 6, 7, 8, 9, 10,
10, 11, 11) skeins

Needles: US Size 6 (4 mm) straight
or 21" circular needle or longer (to
accommodate large number of sts), or
size needed to obtain gauge

US Size 5 (3.5 mm) 16" circular needle

Notions:

Stitch markers, tapestry needle, stitch
holder or waste yarn, spare needle
for three-needle bind-off, removable
stitch markers, crochet hook (for
provisional cast-on)

GAUGE

24 sts x 32 rows = 4" in Stockinette
stitch (St st) with larger ndl

Save time, check your gauge.

PATTERN NOTES

Stagione is all about the details.

Gorgeous lace and twisted stitches
are paired with thoughtful shaping
to make the shoulders the star of the
show. Visible seams, an interesting
construction, and dolman sleeves will
make you savor every stitch. Knit in
Wool Pop, this gorgeous design is soft
and wearable with a slight sheen. It's
sure to be an autumn favorite!

This sweater is worked in two pieces,



flat, from the center to the edge of
the body. Body stitches are bound
off and sleeves continue, flat, to the
cuff. Front at back pieces are seamed
together starting at the cuff and
ending at the body hem. Neckband
stitches are picked up around neck
opening and worked in the round.

Crochet Hook Provisional Cast-on
Using waste yarn, make a slip knot

and place it onto the crochet hook,
held in the right hand. Hold the
knitting needle behind the hook with
the left hand, then * wrap the working
yarn counter-clockwise around the
needle and hook and pull the working
yarn through the slip knot using the
crochet hook creating one stitch;
rep from * until desired number of
stitches are cast-on. Using the crochet
hook, chain a few stitches before

Stagione

Continued

breaking the yarn and pulling tail through the last stitch to secure.

Stretchy Three-needle Bind-off

Holding needles parallel and with WS together, use a third needle to knit the first st on each needle tog, * bring yarn over RH needle from back to front, knit the next st on each needle tog, pass first st and reverse yo over new st; rep from * until all sts are bound off.

STITCH GUIDE

LTdec: Sl 1 pwise, sl 1 kwise, knit the 2 slipped sts tog tbl – 1 st dec'd.

RTdec: S1 pwise, sl 1 kwise, transfer sl sts back to LH needle, knit the 2 slipped sts tog – 1 st dec'd.

Lace

(multiple of 5 sts)

WS Rows 1-5: K1, p3, k1.

RS Rows 2-4: P1, k3, p1.

Row 6: P1, yo, sl 1-k2tog-*psso*, yo, p1. Rep Rows 1-6 for patt.

K1, P1 Rib

(even number of sts, worked in the rnd)

Rnd 1: * K1, p1; rep from * to end. Rep Rnd 1 for patt.

LEFT BACK

Using provisional cast-on, cast on 135 (139, 142, 145, 145, 147, 147, 148, 152, 152) sts.

Row 1 (WS): K6, [k1, p1 tbl] 2 times, k6, [p1 tbl, k1] 2 times, pm, purl to last 29 (29, 29, 34, 34, 34, 34, 39, 39, 39) sts, pm, k1, p1, k1, p1 tbl, k6, p1 tbl, k1, p1 tbl, work Lace patt over next 15 (15, 15, 20, 20, 20, 20, 25, 25, 25) sts, k1.

Row 2 (RS): K1, cont in Lace patt over next 15 (15, 15, 20, 20, 20, 20, 25, 25, 25) sts, k1 tbl, p1, k1 tbl, p6, k1 tbl, p1, k1, p1, sl m, knit to m, sl m, [p1, k1 tbl] 2 times, p6, [k1 tbl, p1] 2 times, k6.

Rep Rows 1-2, 25 (27, 27, 28, 28, 28,

29, 29, 30, 30) more times – piece meas approx. 6½ (7, 7, 7¼, 7¼, 7¼, 7½, 7½, 7¾, 7¾)'' from cast-on edge. Rep Row 1, one more time.

Place stitches on holder or waste yarn.

LEFT FRONT

Using provisional cast-on, cast on 125 (129, 132, 135, 135, 137, 137, 138, 142, 142) sts.

Row 1 (WS): K1, work Lace patt over next 5 (5, 5, 10, 10, 10, 10, 15, 15, 15) sts, p1 tbl, k1, p1 tbl, k6, p1 tbl, k1, p1, k1, pm, purl to last 20 sts, pm, [k1, p1 tbl] 2 times, k6, [p1 tbl, k1] 2 times, k6.

Row 2 (RS): K6, [p1, k1 tbl] 2 times, p6, [k1 tbl, p1] 2 times, sl m, knit to m, sl m, p1, k1, p1, k1 tbl, p6, k1 tbl, p1, k1 tbl, cont in Lace to last st, k1.

Rep Rows 1-2, 15 (17, 17, 18, 18, 18, 19, 19, 20, 20) more times – piece meas approx. 4 (4½, 4½, 4¾, 4¾, 4¾, 5, 5, 5¼, 5¼)'' from cast-on. Rep Row 1, one more time.

Inc Row: Cont as est'd to last st, m1, k1 – 1 st inc'd.

Next Row: Cont as est'd to end, incorporating new st into Lace patt. Rep last 2 rows, 9 more times – 135 (139, 142, 145, 145, 147, 147, 148, 152, 152) sts.

Piece meas approx. 6¾ (7¼, 7¼, 7½, 7½, 7½, 7¾, 7¾, 8, 8)'' from cast-on edge.

Do not break yarn. Move on to Join Left Side.

Join Left Side

Row 1 (RS): Work as est'd over Left Front sts to end, cast-on 3 sts, join Left Back, cont as est'd over Left Back sts to end – 273 (281, 287, 293, 293, 297, 297, 299, 307, 307) sts.

Row 2 (WS): Cont as est'd, to m, sl m, k1, p1, k1, p1 tbl, k6, p1 tbl, k1, p1 tbl, cont Lace patt over next 35 (35, 35, 45, 45, 45, 45, 55, 55, 55) sts, p1 tbl, k1, p1 tbl, k6, p1 tbl, k1, p1, k1, sl m, cont as est'd to end.

Row 3: Cont as est'd to end.

Rep Rows 2-3, 9 (11, 11, 16, 19, 22, 24, 27, 29, 32) more times. Piece meas approx. 9¼ (10¼, 10¼, 11¾, 12½, 13¼, 14, 14¾, 15½, 16¼)'' from cast-on edge. Rep Row 2, one more time.

Break for Sleeves

Dec Row (RS): Work 75 (78, 80, 75, 76, 76, 76, 72, 72, 72) sts as est'd and transfer to waste yarn or holder for Front Body, cont as est'd to m, sl m, cont as est'd over next 12 sts, pm, LTdec, cont in Lace over next 33 (33, 33, 43, 43, 43, 43, 53, 53, 53) sts, RTdec, pm, cont as est'd to next m, sl m, cont as est'd in patt to end, transfer last 75 (78, 80, 75, 76, 76, 76, 72, 72, 72) sts onto waste yarn or holder for Back Body, break yarn – 2 sts dec'd, 121 (123, 125, 141, 139, 143, 143, 153, 161, 161) sts rem for Sleeve.

SLEEVE

Rejoin yarn with WS facing.

Row 1 (WS): K1, cont as est'd to second m, sl m, p1 tbl, cont Lace patt to 1 st before next m, p1 tbl, sl m, cont as est'd to last st, k1.

Dec Row 2 (RS): Cont as est'd to second m, sl m, LTdec, cont in Lace to 2 sts before next m, RTdec, pm, cont as est'd to next m, sl m, cont as est'd to end – 2 sts dec'd.

Rep last 2 rows, 16 (16, 16, 23, 22, 24, 23, 31, 32, 32) more times, then rep Row 1, one more time, removing second and third m as you come to them – 87 (89, 91, 93, 93, 93, 95, 89, 95, 95) sts rem.

Dec Row: Cont as est'd to m, sl m, cont as est'd over next 12 sts, S2KP2, m as center st, cont as est'd to end – 2 sts dec'd.

Next Row: Cont as est'd to center st, p1, cont as est'd to end.

Rep last 2 rows, 6 more times – 73 (75, 77, 79, 79, 79, 81, 75, 81, 81) sts rem.

Stagione

Continued

Dec Row: K1, ssk, knit to m, sl m, p1, k1, p1, k1 tbl, p1, k1, p1, sl m, knit to last 3 sts, k2tog, k1 – 2 sts dec'd.

Next Row: K1, cont as est'd to last st, k1.

Rep last 2 rows 7 (8, 7, 6, 6, 6, 6, 3, 6, 6) more times – 57 (57, 61, 65, 65, 65, 67, 67, 67, 67) sts rem.

Cont as est'd until sleeve meas 12¼ (12¼, 12¾, 12¾, 12¾, 12¾, 12¾, 12¾, 12¾, 12¾, 12¾)" from underarm, ending with a WS row.

Next Row (RS): * K1, p1; rep from * to last st, k1.

Next Row (WS): K1, *k1, p1; rep from * to last 2 sts, k2.

Rep last 2 rows until rib meas 1". Bind-off in patt.

RIGHT FRONT

Using provisional cast-on, cast on 125 (129, 132, 135, 135, 137, 137, 138, 142, 142) sts.

Row 1 (WS): K6, [k1, p1 tbl] 2 times, k6, [p1 tbl, k1] 2 times, pm, purl to last 19 (19, 19, 24, 24, 24, 24, 29, 29, 29) sts, pm, k1, p1, k1, p1 tbl, k6, p1 tbl, k1, p1 tbl, work Lace over next 5 (5, 5, 10, 10, 10, 10, 15, 15, 15) sts, k1.

Row 2 (RS): K1, cont Lace over next 5 (5, 5, 10, 10, 10, 10, 15, 15, 15) sts, k1 tbl, p1, k1 tbl, p6, k1 tbl, p1, k1, p1, sl m, knit to m, sl m, [p1, k1 tbl] 2 times, p6, [k1 tbl, p1] 2 times, k6.

Rep Rows 1-2, 15 (17, 17, 18, 18, 18, 19, 19, 20, 20) more times – piece meas approx. 4 (4½, 4½, 4¾, 4¾, 4¾, 5, 5, 5¼, 5¼)" from cast-on edge. Rep Row 1, one more time.

Inc Row: K1, m1, cont as est'd to end – 1 st inc'd.

Next Row: Cont as est'd to end, incorporating new sts into Lace patt. Rep last 2 rows, 9 more times – 135 (139, 142, 145, 145, 147, 147, 148, 152, 152) sts.

Piece meas approx. 6¾ (7¼, 7¼, 7½, 7½, 7½, 7¾, 7¾, 8, 8)" from cast-on edge. Transfer sts to waste yarn or

holder and move on to Right Back.

RIGHT BACK

Using provisional cast-on, cast on 135 (139, 142, 145, 145, 147, 147, 148, 152, 152) sts.

Row 1 (WS): K1, work Lace patt over next 15 (15, 15, 20, 20, 20, 20, 25, 25, 25) sts, p1 tbl, k1, p1 tbl, k6, p1 tbl, k1, p1, k1, pm, purl to last 20 sts, pm, [k1, p1 tbl] 2 times, k6, [p1 tbl, k1] 2 times, k6.

Row 2 (RS): K6, [p1, k1 tbl] 2 times, p6, [k1 tbl, p1] 2 times, sl m, knit to m, sl m, p1, k1, p1, k1 tbl, p6, k1 tbl, p1, k1 tbl, cont Lace to last st, k1.

Rep Rows 1-2, 25 (27, 27, 28, 28, 28, 29, 29, 30, 30) more times – piece meas 6½ (7, 7, 7¼, 7¼, 7¼, 7½, 7½, 7¾, 7¾)" from cast-on edge. Do not break yarn. Move on to Join Right Side.

Join Right Side

Row 1 (RS): With RS facing, cast-on 3 sts, join Left Front and work in patt as est'd to end – 273 (281, 287, 293, 293, 297, 297, 299, 307, 307) sts.

Row 2 (WS): Work in patt as est'd, to m, sl m k1, p1, k1, p1 tbl, k6, p1 tbl, k1, p1 tbl, cont Lace over next 35 (35, 35, 45, 45, 45, 45, 55, 55, 55) sts, p1 tbl, k1, p1 tbl, k6, p1 tbl, k1, p1, k1, sl m, work in patt as est'd to end.

Row 3: Cont in patt as est'd. Rep Rows 2-3, 9 (11, 11, 16, 19, 22, 24, 27, 29, 32) more times. Piece meas approx. 9¼ (10¼, 10¼, 11¼, 12½, 13¼, 14, 14¾, 15½, 16¼)" from cast-on edge. Rep Row 2, one more time.

Break for Sleeves

Work as for Left Side.

SLEEVE

Work as for Left Side.

FINISHING

Starting at sleeve cuff, seam sleeves to underarm. Do not break yarn. Transfer body stitches back to needles, graft

body stitches together using Kitchener st working from underarm to hem.

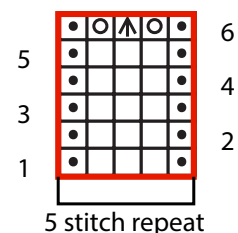
Take care to ensure the WS's of each end are facing inward when grafting. Remove provisional cast-on and transfer sts to needles. Using Stretchy Three-needle Bind-off (see Pattern Notes) Join Right and Left Front and Right and Left Back, starting at the neckline and working toward the hem.

Neckband

With smaller needles and starting at center back, pick up and knit 110 (122, 122, 128, 128, 128, 134, 134, 140, 140) sts evenly around neck opening, pm to denote bor. Work K1, P1 Rib for 1". Bind off all sts in patt. Gently wash and block to finished measurements. Weave in ends.



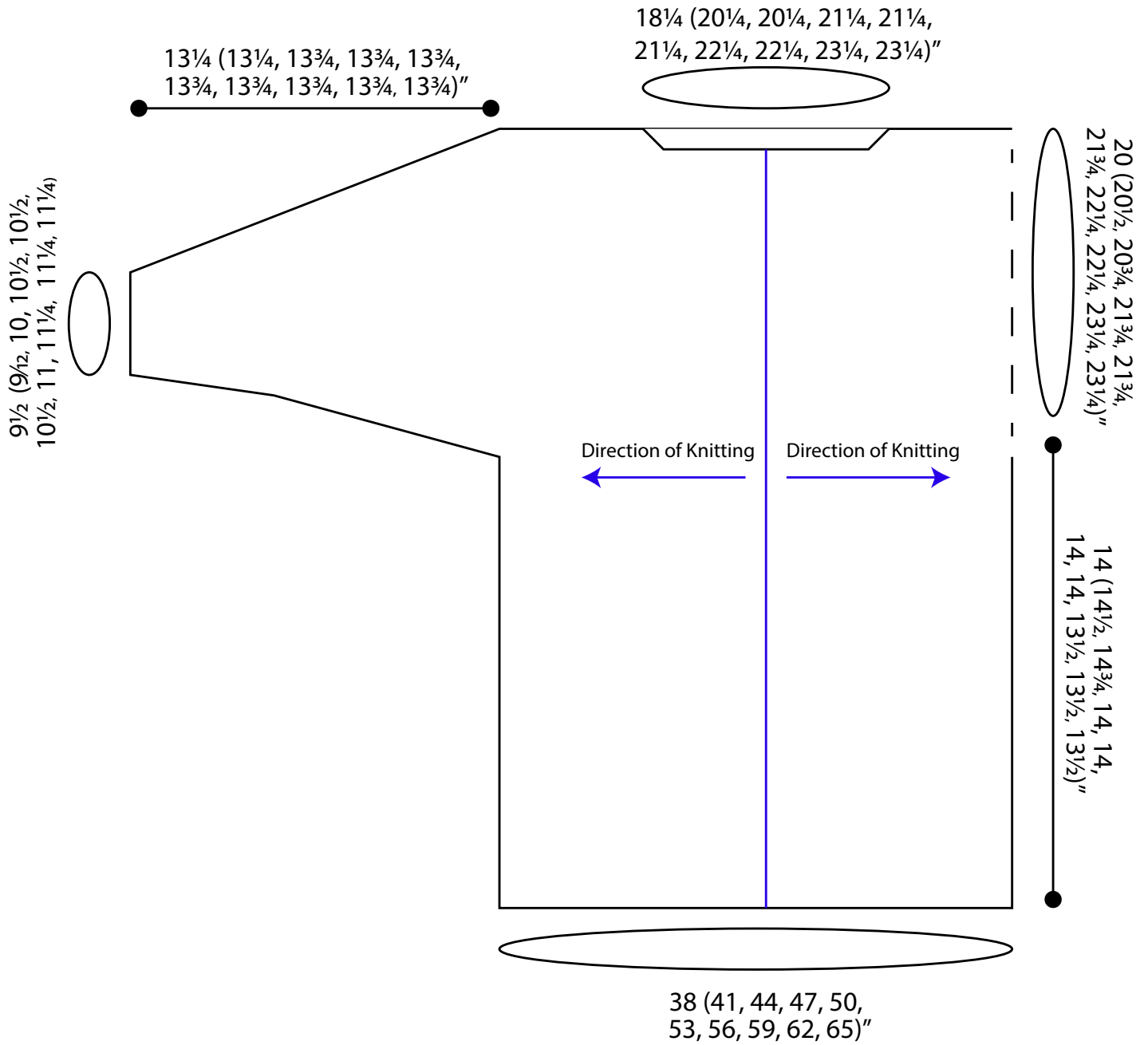
Lace



Key

- pattern repeat
- knit on RS, purl on WS
- purl on RS, knit on WS
- yarn over
- △ sl 1-k2tog-ssso

Stagione
Continued



Wool Pop



260 m / 284 yds
3.5 oz / 100 g

35% Superwash Wool,
50% Bamboo, 15% Polyamide
Machine wash warm, dry flat.
Knit: 22 sts x 30 rows = 4" in St st / US Size 6 (4 mm)
Crochet: 19 sc x 20 rows = 4" / US Size G-6 (4 mm)

Wool Pop has a smooth, soft hand and slight sheen. The way the bamboo and wool take the dye differently gives this yarn a beautiful, heathered appearance. This springy yarn is perfect for garments, accessories, blankets, and more.



601
White



602
Cream



603
Sand



604
Black



605
Silken



606
Marmalade



607
Graphite



608
Lily Pad



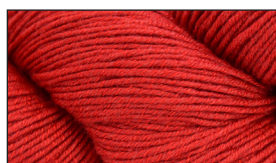
609
Darling Pink



610
Winter Blue



611
Brambles



612
True Red



613
Nightshade



614
Winter Squash



615
Sage



616
Denim



617
Raisin



618
Lemongrass



619
Blue Whisper



620
Apricot Slush

Abbreviations

| | | | |
|----------------|--|------------------|---|
| approx | approximately | pm | place marker |
| bef | before | pssso | pass slipped stitch(es) over |
| beg | begin(ning) | RC | right cross |
| bor | beginning of round | rem | remain(ing) |
| circ | circular | rep | repeat |
| cont | continue | Rev St st | Reverse Stockinette stitch (purl on RS rows, knit on WS rows; in the rnd, purl every rnd) |
| dec('d) | decrease(d) | RH | right hand |
| dpn(s) | double pointed needle(s) | rnd | round |
| est'd | established | RS | right side |
| foll | follow | S2KP2 | slip 2 stitches as if to knit 2 together, knit 1, pass 2 slipped stitches over knit stitch; centered double decreases |
| inc('d) | increase(d) | SK2P | slip 1 kwise, k2tog, pass slip stitch over the k2tog; double left-leaning decrease |
| k | knit | sl | slip |
| k2tog | knit 2 stitches together (1 st dec'd) | ssk | slip next 2 sts individually knitwise, slip them back to left needle in this position, knit them together through the back loops (1 st dec'd) |
| LC | left cross | ssp | slip next 2 sts individually knitwise, slip them back to left needle in this position, purl them together through the back loops (1 st dec'd) |
| LH | left hand | SSPP2 | slip 2 stitches knitwise, return these 2 stitches to left needle and then slip them as if to p2tog through back loops, purl 1, pass 2 slipped stitches over purl stitch; centered double decrease |
| m | marker | St st | Stockinette stitch (knit on RS rows, purl on WS rows; in the rnd, knit every rnd) |
| m1 | insert left needle from front to back under horizontal strand of yarn lying between st just worked and next st, knit or purl this st through the back loop (1 st inc'd) | st(s) | stitch(es) |
| m1L | insert left needle from front to back under horizontal strand of yarn lying between st just worked and next st, knit or purl this st through the back loop (1 st inc'd) | tbl | through the back loop(s) |
| m1P | insert left needle from front to back under horizontal strand of yarn lying between st just worked and next st, purl this st through the front loop (1 st inc'd) | tog | together |
| m1R | insert left needle from back to front under horizontal strand of yarn lying between st just worked and next st, knit or purl this st through the front loop (1 st inc'd) | WS | wrong side |
| meas | measures | yo | yarn over |
| ndl | needle | | |
| p | purl | | |
| p2tog | purl 2 sts together (1 st dec'd) | | |
| patt | pattern | | |

Distribution

US

Universal Yarn
5991 Caldwell Park Drive
Harrisburg, NC 28075
Tel: 877.864.9276
Fax: 704.454.1029
e-mail: patterns@universalyarn.com
www.universalyarn.com

CANADA

H.A. Kidd & Company
5 Northline Rd
Toronto, ON M4B 3P2
Tel: 800.387.1753
Fax: 416.364.4860
email: info1@hakidd.com
www.hakidd.com.com

TURKEY

Defne
DEMIRTAS ORGANIZE SANAYI
BÖLGESİ
ZAMBAK SOKAK NO:3
OSMANGAZI/Bursa
Tel: 90.224.261.3347-48
Fax: 90.224.261.3332
e-mail: info@defneplikpazarlama.com

Acknowledgements

Creative Lead

Rachel Brockman

Designers

Rachel Brockman

Lana Jois

Adrienne Larsen

Courtney Spainhower

Technical Editors

Rachel Brockman

Aubrey Busek

Proofreaders

Heather Hill

Aubrey Busek

Graphic Artist

Heather Hill

Model

Taylor Little

Photographer

Jullianna O'Malley of

Salt Paper Studio

Stylist

Chelsea Kimrey

