



## Pattern Collection: Accessories



### Spun Sugar Hat

Designed by Rachel Brockman

#### DIFFICULTY

Easy

#### SIZES

Baby (Toddler, Child, Adult  
Small/Medium, Adult Medium/Large)

#### FINISHED MEASUREMENTS

**Brim Circumference:** 14 (16, 18, 20, 22)"

**Length (with brim unfolded):** 8 (8½, 10½,  
11¼, 11¼)"

#### MATERIALS

**Universal Yarn Uptown Baby Sport** (100%  
anti-pilling acrylic; 100g/361 yds)

- 209 Petal (A) – 1 skein (all sizes)
- 224 Silver (B) – 1 skein (all sizes)
- 204 Shell (C) – 1 skein (all sizes)
- 218 Silver Blue (D) – 1 skein (all sizes)

**Needle:** US Size 5 (3.75 mm) 16" circular  
and set of DPNs *or size needed to obtain  
gauge*

US Size 4 (3.5 mm) 16" circular and set of  
DPNs (for Baby and Toddler sizes)

**Notions:** Tapestry needle, stitch markers,  
1½ (1½, 2½, 2½, 2½)" pom pom maker

#### GAUGE

24 sts x 28 rnds = 4" in stranded knitting  
with larger ndl

*Knit. Relax. Smile. Repeat!*

2020 © Universal Yarn, Inc.

All rights reserved.

[www.universalyarn.com](http://www.universalyarn.com)

This pattern may not be reproduced for business, trade or sale.

## PATTERN NOTES

Sweet like sugar, this little hat is perfect for everyone in your family. Knit in four colors of easy-care Uptown Baby Sport, this hat features a colorwork motif of fun shapes. The folded brim will keep your ears nice and warm. A cute pom pom is the finishing touch on this cap!

This hat is knit in the round from the bottom up.

## STITCH GUIDE

### K3, P3 Rib

(multiple of 6 sts)

**Rnd 1:** \* K3, p3; rep from \* to end.

Rep Rnd 1 for patt.

## HAT

### Brim

With smaller ndl and color A, cast on 84 (96, 108, 120, 132) sts. PM and join to knit in the rnd, being careful not to twist.

Work in K3, P3 Rib for 3 (3½, 3¾, 4½, 4½)".

Change to larger ndl.

### Hat Body

*Note 1: Join colors as indicated on chart.*

*Note 2: Take care to work the correct chart for your size.*

Work Rnds 1-24 (1-24, 1-36, 1-36, 1-36) of Hat Body patt. Patt will be repeated 7 (8, 9, 10, 11) times across each rnd.

### Crown Shaping

*Note: Change to DPNs when there are too few sts to fit comfortably on ndl.*

Work Rnds 1-11 of Crown Shaping patt – 77 (88, 99, 110, 121) sts dec'd, 7 (8, 9, 10, 11) sts rem.

Break yarn, leaving approx. 8" tail. Thread tail through rem live sts.

## FINISHING

Gently wash and block to finished measurements. Weave in ends. Using pom pom maker, make a 1½ (1½, 2½, 2½, 2½)" pom pom. Secure to top of hat.



## Abbreviations

<b>dec('d)</b>	decrease(d)
<b>dpn(s)</b>	double pointed needle(s)
<b>k</b>	knit
<b>m</b>	marker
<b>meas</b>	measures
<b>p</b>	purl
<b>patt</b>	pattern
<b>pm</b>	place marker
<b>rem</b>	remain(ing)
<b>rep</b>	repeat
<b>S2KP2</b>	slip 2 stitches as if to knit 2 together, knit 1, pass 2 slipped stitches over knit stitch; centered double decreases
<b>ssk</b>	slip next 2 sts individually knitwise, slip them back to left needle in this position, knit them together through the back loops (1 st dec'd)
<b>st(s)</b>	stitch(es)

*Knit. Relax. Smile. Repeat!*

2020 © Universal Yarn, Inc.

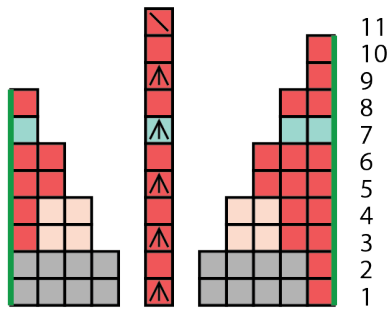
All rights reserved.

[www.universalyarn.com](http://www.universalyarn.com)

This pattern may not be reproduced for business, trade or sale.

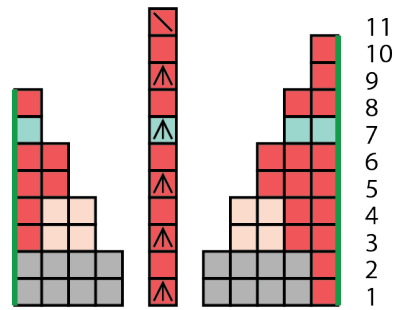
# Child (Adult Small/Medium, Adult Medium/Large)

## Crown Shaping

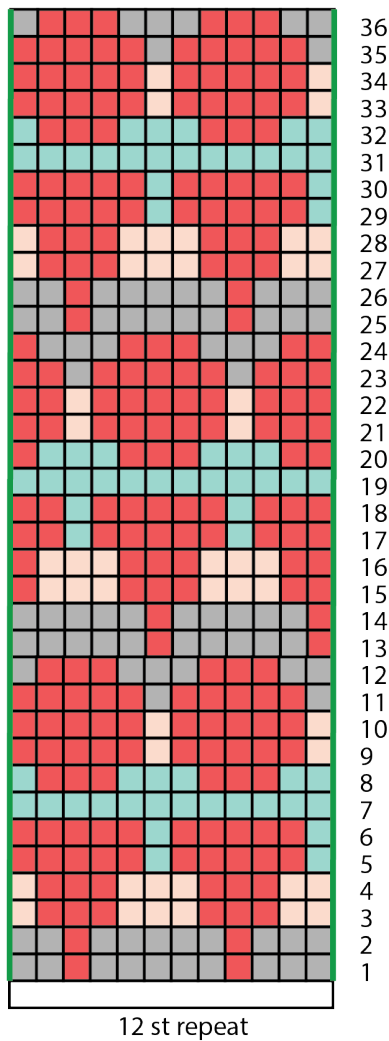


# Baby (Toddler)

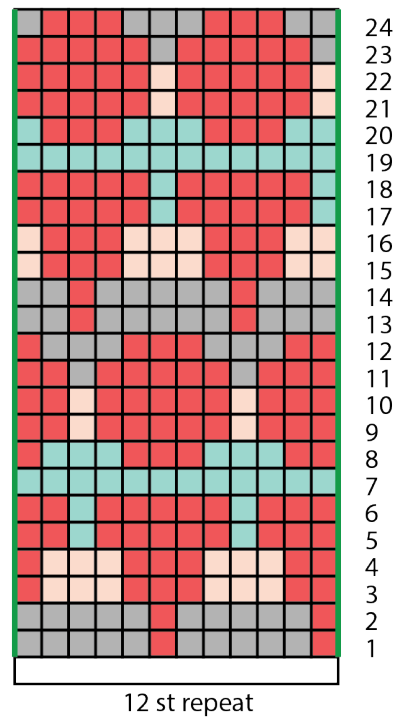
## Crown Shaping











## Hat Body



## Hat Body



### Key

-  pattern repeat
-  with color A, knit
-  with color B, knit
-  with color C, knit
-  with color D, knit
-  with color A, S2KP2
-  with color D, S2KP2
-  with color A, ssk

*Knit. Relax. Smile. Repeat!*

2020 © Universal Yarn, Inc.

All rights reserved.

[www.universalyarn.com](http://www.universalyarn.com)

This pattern may not be reproduced for business, trade or sale.