



Pattern Collection: Accessory



Splatter Lace Cowl

Designed by Amy Gunderson

SIZES

Short (Long)

FINISHED MEASUREMENTS

Circumference: 25 (45)"

Height: 8½"

MATERIALS

Fibra Natura Dona (100% extra fine merino superwash; 50g/126 yds)

• 127 Real Teal (MC1) – 2 (4) balls -
Short Size shown

• 103 Amber (MC2) – 2 (4) balls - *Long
size shown*

Needles: US Size 6 (4 mm) 16" (24")

circular or size needed to obtain gauge
US Size 4 (3.5 mm) 16" (24") *circular or
size needed to obtain gauge*

Notions: Stitch markers, tapestry needle

GAUGE

28 sts x 25 rnds = 4" in Splatter Lace patt
using larger ndl

28 sts x 56 rnds = 4" in garter stitch
using smaller ndl

Save time, check your gauge.

For questions about this pattern, please
contact patterns@universalyarn.com.

Knit. Relax. Smile. Repeat!

2019 © Universal Yarn, Inc.

All rights reserved.

www.universalyarn.com

This pattern may not be reproduced for business, trade or sale.

PATTERN NOTES

Plush and with a punch of color, the Splatter Lace Cowl is the perfect fall accessory. The gorgeous palette and superb stitch definition of Dona makes this the perfect pairing of yarn and pattern.

This cowl is worked in the round. Stitches are decreased on Rows 3 & 7 of Splatter Lace pattern. The original stitch count is restored on Rows 4 & 8 of pattern.

STITCH GUIDE

5 into 1 Dec: Ssk, k3tog, pass the ssk over the k3tog.

1 into 5 Inc: [K1, yo, k1, yo, k1] into st specified.

Splatter Lace

(begins with multiple of 6 sts)

Rnds 1-2: Knit.

Rnd 3: * 5 into 1 Dec, k1; rep from * to end.

Rnd 4: * 1 into 5 Inc, k1; rep from * to end.

Remove bor m, k3, replace m for new bor.

Rnds 5-6: Knit.

Rnd 7: * 5 into 1 Dec, k1; rep from * to end.

Rnd 8: * 1 into 5 Inc, k1; rep from * to end.

Remove beg of rnd m. Place it 3 sts back in its original location. Rep Rnds 1-8 for patt.

COWL

With smaller circ ndl, cast on 174 (312) sts. PM and join to work in the rnd, being careful not to twist.

Lower Edge

Rnd 1: Purl.

Rnd 2: Knit.

Rnds 3-8: Rep Rnds 1-2, 3 more times.

Main Cowl

Change to larger circ ndl.

Work Rnds 1-8 of Splatter Lace patt, 5 times.

Upper Edge

Rnd 1: Purl.

Rnd 2: Knit.

Rep Rnds 1-2, 3 more times.

Change to smaller ndl. [Purl 1 rnd, knit 1 rnd] 3

Rnd 1: Purl.

Rnd 2: Knit.

Rnds 3-6: Rep Rnds 1-2, 2 more times.

Rnd 7: Purl.

Bind off all sts kwise.

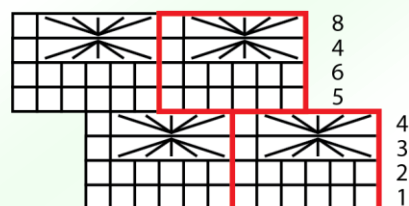
FINISHING

Gently wash and block to finished measurements. Weave in ends.

Abbreviations

bor	beginning of round
circ	circular
dec('d)	decrease(d)
garter st	knit every row
inc('d)	increase(d)
k	knit
k3tog	knit 3 stitches together (2 sts dec'd)
kwise	knitwise
m	marker
ndl	needle
patt	pattern
pm	place marker
rep	repeat
rnd	round
ssk	slip next 2 sts individually knitwise, slip them back to left needle in this position, knit them together through the back loops (1 st dec'd)
st(s)	stitch(es)
yo	yarn over

Splatter Lace



Key

	knit
	5 into 1 dec
	1 into 5 inc
	pattern repeat

Knit. Relax. Smile. Repeat!

2019 © Universal Yarn, Inc.

All rights reserved.

www.universalyarn.com

This pattern may not be reproduced for business, trade or sale.