



PATTERN COLLECTION

Crochet



Spice Market Shawl

Designed by Ashley Jane McIntyre

DIFFICULTY

Intermediate

SIZES

One Size

FINISHED MEASUREMENTS

Width across Top Edge: 63"

Length: 61"

MATERIALS

[Universal Yarn Uni Merino](#) (75% superwash merino wool, 25% nylon; 100g/437 yds)

- 138 Black Cherry (MC) - 4 skeins
- 142 Romance (CC1) - 2 skeins
- 114 Honeycomb (CC2) - 2 skeins
- 103 Alabaster (CC3) - 2 skeins

Hook: US Size F/5 (3.75 mm) or size needed to obtain gauge

Notions: Tapestry needle

GAUGE

24 sts x 24 rows = 4" in Stitch Pattern for Gauge Swatch

Save time, check your gauge.

Knit, Relax, Smile, Repeat!

2022 © Universal Yarn, Inc.

www.universalyarn.com

All rights reserved. This pattern may not be reproduced for business, trade or sale.

Questions? Contact patterns@universalyarn.com

PATTERN NOTES

Rich, vibrant colors streak across this shawl with a unique blend of double crochet and a double extended single crochet stitch. Lose yourself in the rhythm of these alternating stitches the same way you would let yourself meander and wander through an open-air market. Embrace the joy of taking in the colors, textures and feel of this piece as it comes to life in your hands.

This shawl is worked flat from tip to widest edge with increases happening along one side.

The shawl's main pattern is created over a four-row repeat, with rows that overlap each other. Contrast color rows are made of alternating double crochet and chains to create gaps between stitches, then the main color fills the gaps with a double extended single crochet. A description of this pattern is provided in the stitch guide and is charted for visual reference.

You will use one color at a time for two rows, with all colors gathering on one side of the shawl. Twist and capture the floats of yarn with bordering stitches as you turn your work to create a clean edge to the shawl. If you do not wish to have floats of yarn along the edge, you will need to Fasten off at each color change and later weave in the ends.

STITCH GUIDE

Changing Colors

Work until 2 lps remain on hk, yo with new color and pull through the last 2 lps to complete the stitch.

Double Extended Single Crochet (DESC)

Loosely insert hk into indicated st, yo, pull up lp (2 lps on hk), yo, draw through 1 lp (2 lps on hk), yo, draw through 1 lp (2 lps on hk), yo, draw through both lps on hk.

Magic Circle

Make a circle with tail of yarn behind working yarn. Reach hk inside of circle made, yo with working yarn, pull up a lp. Yo, ch indicated number of chs to begin patt. Once Rnd 1 is est, pull tail of yarn taught.

Stitch Pattern for Gauge Swatch

Note: You will need to select a MC and CC for this swatch to practice the color changes of the shawl along with the stitch pattern.

With MC, ch an even number of sts.

Row 1 (WS): Sc in 2nd ch from hk and each ch across, changing to CC on last st, turn.

Row 2 (RS): Ch 1, sc in each st across, turn.

Row 3: Ch 4 (counts as dc + ch), sk st, dc in next st, * ch 1, sk st, dc in next st; rep from * across, changing to MC on last st, turn.

Row 4: Ch 1, sc, * *working over ch sp*, DESC in sc 2 rows below, sc in next st; rep from * across, turn.

Row 5: Ch 1, sc in each st across, changing to CC on last st, turn.

Rep Rows 2-5 for patt.

PATTERN BEGINS

Section 1 – Main Pattern

With MC, make a magic circle.

Row 1 (WS): Ch 1, 3 sc in circle, changing to CC1 on last st, turn – 3 sts.

Row 2 (RS Inc Row): Ch 1, 3 sc in 1st st, sc in each st across, turn – 2 sts inc'd., 5 sts.

Row 3: Ch 4 (counts as dc + ch), sk st, dc in next st, * ch 1, sk st, dc in next st; rep from * across, changing to MC on last st, turn.

Row 4: Ch 1, sc in 1st st, * *working over ch sp*, DESC in sc 2 rows below, sc in next st; rep from * across, turn.

Row 5 (WS Inc Row): Ch 1, sc in each st across until 1 st rem, 3 sc in last st, changing to CC1 on last st, turn – 2 sts inc'd, 7 sts.

Rows 6-369: Rep Rows 2-5, 91 more times, changing CC every two reps in the following order: CC2, CC3, CC1. Change color to CC2 on last st – 364 sts inc'd, 371 sts.

Row 370-373: Rep Rows 2-5, changing to CC1 on last st – 375 sts. Fasten off CC2.

Section 2 – Edge

Row 1 (RS Inc Row): Ch 1, [sc, ch 1, sc] in 1st st * ch 1, sk 1, sc in next st; rep from * across, changing to CC2 on last st, turn – 2 sts inc'd, 377 sts/sps.

Row 2 (WS): Ch 1, sc in 1st st, * sc in next ch sp **, ch 1, sk 1; rep from * across, ending at ** with 1 st rem, changing to CC3, sc in last st, turn.

Row 3: Ch 1, sc in 1st st, * ch 1, sk 1, sc in next ch sp; rep from * across, changing to CC1 on last st, turn.

Row 4 (WS Inc Row): Ch 1, sc in 1st st, * sc in next ch sp **, ch 1, sk 1; rep from * across, ending at ** with 1 st rem, [ch 1, 2 sc] in last st, changing to CC2 on last st, turn – 2 sts inc'd, 379 sts/sps.

Row 5 (RS Inc Row): Ch 1, [sc, ch 1, sc] in 1st st * ch 1, sk 1, sc in next ch sp; rep from * across, changing to CC3 on last st, turn – 2 sts inc'd, 381 sts/sps.

Knit, Relax, Smile, Repeat!

2022 © Universal Yarn, Inc.

www.universalyarn.com

All rights reserved. This pattern may not be reproduced for business, trade or sale.

Questions? Contact patterns@universalyarn.com

Rows 6-8: Rep Rows 2-4, changing CC every row in the following order: CC1, CC2, CC3. Change color to MC on last st - 2 sts inc'd, 383 sts/sps. Fasten off all CCs.

Row 9: Rep Row 5 - 2 sts inc'd, 385 sts/sps.

Row 10-13: Rep Rows 2-5 - 4 sts inc'd, 389 sts/sps.

Rows 14-16: Rep Rows 2-4 - 2 sts inc'd, 391 sts/sps.

Fasten off MC.

FINISHING

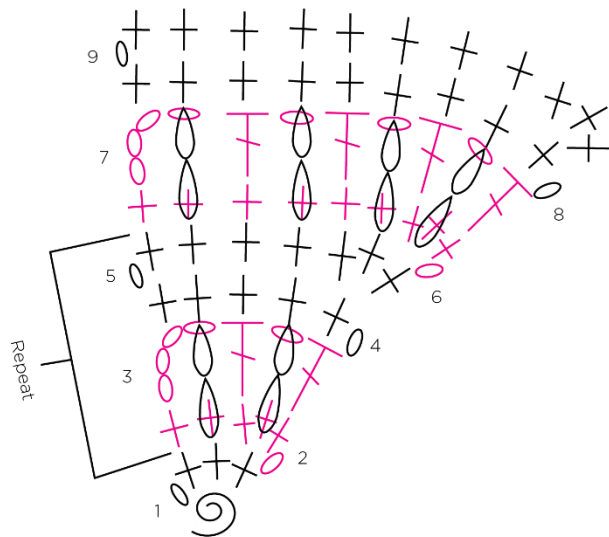
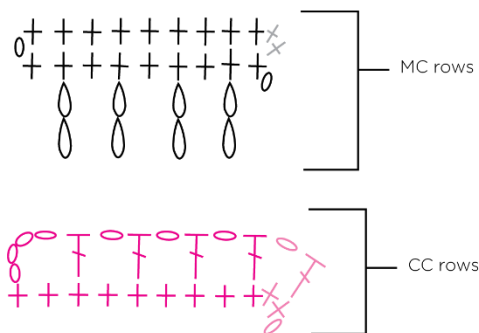
Gently wash and block to finished measurements. Weave in ends.

Abbreviations

- * indicates a repeat section
- ** indicates where you will stop on the last repeat
- approx approximately

CC	contrast color
ch	chain
dc	double crochet
est'd	established
hk	hook
lp(s)	loop(s)
MC	main color
rem	remain(ing)
rep	repeat
RS	right side
sc	single crochet
sk	skip
sp	space
st(s)	stitch(es)
WS	wrong side
yo	yarn over

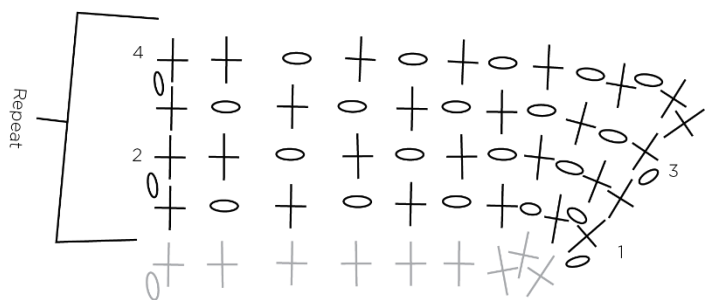
SECTION 1



KEY

- 0 Chain (ch)
- + Single Crochet (sc)
- ⌈ Double Crochet (dc)
- ⌈ Double Extended Single Crochet (DESC)

SECTION 2



Knit, Relax, Smile, Repeat!

2022 © Universal Yarn, Inc.

www.universalyarn.com

All rights reserved. This pattern may not be reproduced for business, trade or sale.

Questions? Contact patterns@universalyarn.com