



Pattern Collection: Accessories



Spellbinder Cowl

Designed by Universal Yarn Design Team

SIZES

One

FINISHED MEASUREMENTS

Circumference: 50"

Height: 15½"

MATERIALS

Rozetti Yarns Alpaculence (76% acrylic, 9% alpaca, 9% wool, 6% glitter; 100g/536 yds)

- 108 Jade Blush – 1 skein

Needles: US Size 6 (4 mm) 32" circular *or size needed to obtain gauge*

Notions: Tapestry needle, stitch markers, pins

GAUGE

23 sts x 28 rows = 4" in Scallop patt

Save time, check your gauge.

Knit. Relax. Smile. Repeat!

2018 © Universal Yarn, Inc.
All rights reserved.

www.universalyarn.com

This pattern may not be reproduced for business, trade or sale.

PATTERN NOTES

The Spellbinder Cowl is...well, spellbinding. An easy-to-memorize lace pattern paired with soft, shimmering Alpaculence creates a beautiful, lightweight cowl that can easily be dressed up or down.

The sample shown weighs 92 grams. Take care to ensure your gauge is accurate to prevent the possibility of running out of yarn.

The shawl pin shown is the [Alhambra Lace Pin](#) by [Jul Designs](#).

STITCH GUIDE

Scallop Pattern

(multiple of 36 sts)

Rnd 1: * K18, yo, k4, ssk, k6, k2tog, k4, yo; rep from * to end.

Rnd 2: * P18, k1, yo, k4, ssk, k4, k2tog, k4, yo, k1; rep from * to end.

Rnd 3: * K20, yo, k4, ssk, k2, k2tog, k4, yo, k2; rep from * to end.

Rnd 4: * P18, k3, yo, k4, ssk, k2tog, k4, yo, k3; rep from * to end.

Rnds 5-8: Work as for Rnds 1-4.

Rnd 9: * Yo, k4, ssk, k6, k2tog, k4, yo, k18; rep from * to end.

Rnd 10: * K1, yo, k4, ssk, k4, k2tog, k4, yo, k1, p18; rep from * to end.

Rnd 11: * K2, yo, k4, ssk, k2, k2tog, k4, yo, k20; rep from * to end.

Rnd 12: * K3, yo, k4, ssk, k2tog, k4, yo, k3, p18; rep from * to end.

Rnds 13-16: Work as for Rnds 9-12.

Rep Rnds 1-16 for patt.

COWL

Cast on 288 sts. PM and join to work in the rnd, being careful not to twist sts.

Bottom Border

Rnd 1: Knit to end.

Rnd 2: Purl to end.

Rep Rnds 1-2, 2 more times.

Main Cowl

Rnd 1: Work in Scallop patt to end. Patt will be rep 8 times across each rnd.



Cont as est'd, working Rnds 1-16 of Scallop patt a total of 6 times.

Top Border

Rnd 1: Knit to end.

Rnd 2: Purl to end.

Rep Rnds 1-2, 2 more times. Loosely bind off all sts.

FINISHING

Weave in ends but do not trim. Stretch out and pin to blocking mat. Steam or wet block. Trim ends close to work.

Abbreviations

k	knit
k2tog	knit 2 stitches together (1 st dec'd)
m	marker
p	purl
patt	pattern
pm	place marker
rep	repeat

Formatted: Indent: Left: 0", Hanging: 1"

Deleted:

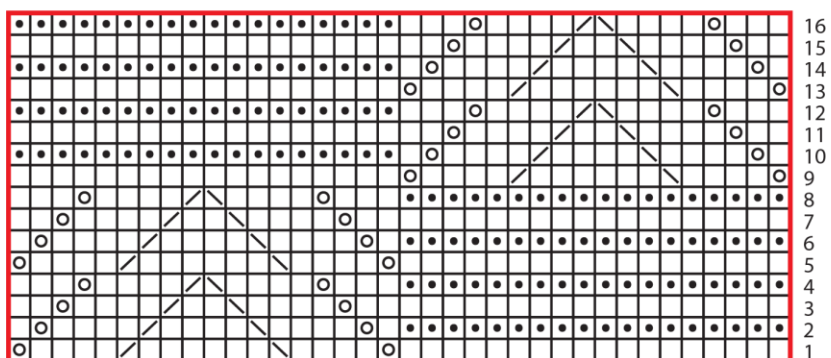
Knit. Relax. Smile. Repeat!

2018 © Universal Yarn, Inc.
All rights reserved.
www.universalyarn.com

This pattern may not be reproduced for business, trade or sale.

rnd(s) round(s)
ssk slip next 2 sts individually
 knitwise, slip them back to left
 needle in this position, knit them
 together through the back loops
 (1 st dec'd)
st(s) stitch(es)
yo yarn over

Scallop Pattern



Key

 pattern repeat	 ssk
 knit	 k2tog
 purl	 yarn over

Knit. Relax. Smile. Repeat!

2018 © Universal Yarn, Inc.
 All rights reserved.

www.universalyarn.com

This pattern may not be reproduced for business, trade or sale.