



Pattern Collection: Accessory



Soothing Shawl

Designed by Rachel Brockman

SIZES

Small (Large)

FINISHED MEASUREMENTS

Wingspan: 44½ (84)''

Depth at center: 19½ (37¼)''

Size Large shown

MATERIALS

Fibra Natura Papyrus (78% cotton, 22% silk; 50g/131 yds)

- 229-14 Cerulean – 5 (9) balls

Needles: US Size 7 (4.5 mm) 40'' circular
or size needed to obtain gauge

Notions: Tapestry needle, stitch marker

GAUGE

18 sts x 30 rows = 4'' in Seed Stitch

Save time, check your gauge.

Knit, Relax, Smile, Repeat!

2018 © Universal Yarn, Inc.

All rights reserved.

www.universalyarn.com

This pattern may not be reproduced for business, trade or sale.

PATTERN NOTES

There is nothing quite like a soothing, understated project. Written for two sizes, the Large version could double as a luxurious blanket and the smaller size is perfect for everyday wear. This body of the shawl is comprised mostly of a sea of seed stitch. Increases along the outer edges. It is constructed sideways from tip to tip, beginning and ending with just one stitch. The shawl is then finished with a more challenging applied lace border.

On rows 2 and 6 of Chain Lace Edging, the k2tog's are worked using the second loop of the double yarn over (from the previous row) and the following knit stitch.

Slip all stitches purlwise.

The shawl stick shown is the Apus – [Celtic Bird of Paradise Shawl Stick](#) by [Jul Designs](#).

STITCH GUIDE

Chain Lace Edging

(begins with 16 sts)

Note: On rows 2 and 6, the k2tog's are worked using the second loop of the double yarn over (from the previous row) and the following knit stitch.

Row 1 (RS): Sl 1 wyib, k1, yo, k2tog, k1, k2tog, yo, k1, yo, k4, [yo] 2 times, k2tog, [yo] 2 times, k2 – 20 sts.

Row 2 (WS): Sl 1 wyif, k2, yo, k2tog, k1, yo, k2tog, k1, p7, k3, k2tog (last Chain Lace Edging st tog with a Shawl Edge st) – 1 edge st consumed.

Row 3: Sl 1 wyib, k1, yo, [k2tog] 2 times, yo, k3, yo, k2tog, k9.

Row 4: Sl 1 wyif, k8, p7, k3, k2tog – 1 edge st consumed.

Row 5: Sl 1 wyib, k1, yo, k2tog, k1, yo, k2tog, k1, k2tog, yo, k5, {[yo] 2 times, k2tog} 2 times, k1 – 22 sts.

Row 6: Sl 1 wyif, k2, yo, k2tog, k1, yo, k2tog, k3, p7, k3, k2tog – 1 edge st consumed.

Row 7: Sl 1 wyib, [k1, yo, k2tog] 2 times, k1, k2tog, yo, k12.

Row 8: Bind off 6 sts, k4, p7, k3, k2tog – 1 edge st consumed, 16 sts rem.

Row 9: Sl 1 wyib, k1, yo, k2tog, k2, yo, sl 2-k1-pssso, yo, k7.

Row 10: Sl 1 wyif, k4, p7, k3, k2tog – 1 edge st consumed.

Rep Rows 1-10 for patt

Seed Stitch

(odd number of sts)

Row 1 (RS): * K1, p1; rep from * to last st, k1.

Row 2 (WS): * P1, k1; rep from * to last st, p1.

Rep Rows 1-2 for patt.

SHAWL

Cast on 1 st (both sizes).

Row 1 (RS): Yo, k1 – 1 st inc'd, 2 sts.

Row 2 (WS): Knit to end.

Rep Rows 1-2, 7 more times – 7 sts inc'd, 9 sts.

Establish Seed Stitch & Increases

Note: Maintain Seed St in patt as much as possible during increases. Maintain garter st border of 3 sts on each side of shawl throughout the next section.

Row 1 (RS): Yo, k3, work in Seed patt to last 3 sts, k3 – 1 st inc'd, 10 sts.

Row 2 (WS): K3, cont in Seed patt as est'd to last 3 sts, k3.

Rep Rows 1-2, 60 (140) more times – 60 (140) sts inc'd, 70 (150) sts.

Decrease Section

Note: Maintain Seed St in patt as much as possible during decreases. Maintain garter st border of 3 sts on each side of shawl throughout the next section. When there are no longer enough sts to cont in Seed patt, cont in garter st instead.

Row 1 (RS): Yo, sssk, cont in Seed patt as est'd to last 3 sts, k3 – 1 st dec'd, 69 (149) sts rem.

Row 2 (WS): K3, cont in Seed patt as est'd to last 3 sts, k3.

Knit, Relax, Smile, Repeat!

2018 © Universal Yarn, Inc.

All rights reserved.

www.universalyarn.com

This pattern may not be reproduced for business, trade or sale.

Rep Rows 1-2, 62 (142) more times, 62 (142) sts dec'd, 7 sts rem.

Next Row: Yo, sssk, knit to end – 1 st dec'd, 6 sts rem.

Next Row: Knit to end.

Repeat these last two rows 2 more times – 2 sts dec'd, 4 sts rem.

Next Row: Yo, sssk, k1 – 1 st dec'd, 3 sts rem.

Next Row: Cont as est'd to end.

Next Row: Yo, sssk – 1 st dec'd, 2 sts rem.

Next Row: K2tog – 1 st dec'd, 1 st rem. Do not break yarn.

Edging

Note: On every WS Row of Edging, 1 st is consumed from the body of the shawl.

With last bound-off st from Shawl Body on ndl counting as 1 st, pick up and knit 1 st in side of next row, pick up and knit 1 st for each yo to tip (widest point) of shawl, 1 st at tip, 1 st for each yo to other end, pick up and knit 1 st in last row – 141 (301) sts. Cast on 16 sts using the knitted cast-on method. Turn work.

Set-up Row (WS): Sl 1 wyib, work Row 10 of Chain Lace patt to end.

Row 1 (RS): Sl 1 wyif, sl m, Row 1 of Chain Lace patt to end.

Row 2: Sl 1 wyib, work Row 2 of Chain Lace patt, turn work– 1 edge st consumed.

Cont as est'd, working Rows 1-10 of Chain Lace Edging 28 (60) times total – 141 (301) edge sts consumed.

Bind off all sts.

FINISHING

Block to finished measurements using blocking wires. Weave in all ends.

Abbreviations

cont continue
dec('d) decrease(d)
est'd established



garter st	knit every row
inc('d)	increase(d)
k	knit
k2tog	knit 2 stitches together (1 st dec'd)
meas	measures
ndl	needle
p	purl
patt	pattern
rem	remain(ing)
rep	repeat
sssk	slip next 3 stitches individually knitwise, slip them back to left needle in this position, knit them together through the back loops (2 sts dec'd)
st(s)	stitch(es)
WS	wrong side
RS	right side
wyib	with yarn held in back

Knit, Relax, Smile, Repeat!

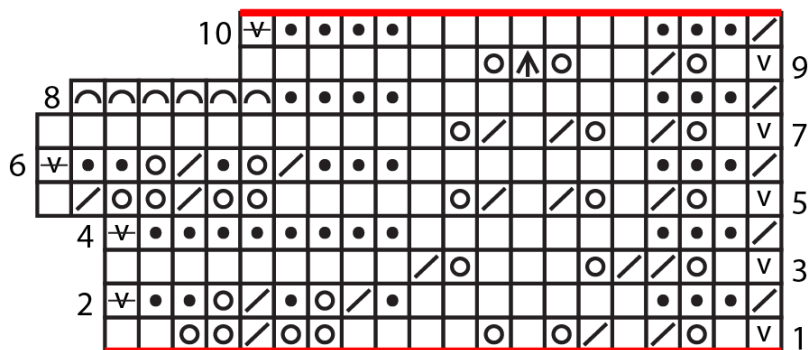
2018 © Universal Yarn, Inc.
All rights reserved.
www.universalyarn.com

This pattern may not be reproduced for business, trade or sale.

yo

yarn over

Chain Lace Edging



Key

- sl 1 wyib
- sl 1 wyif
- knit on rs, purl on ws
- purl on rs, knit on ws
- yo
- k2tog on rs and ws
- bind off
- sl 2 - k1 - pssso
- repeat

Knit, Relax, Smile, Repeat!

2018 © Universal Yarn, Inc.
All rights reserved.
www.universalyarn.com

This pattern may not be reproduced for business, trade or sale.