



PATTERN COLLECTION

Accessories



Smoky Mountain Cowl

Designed by Rachel Brockman

DIFFICULTY

Easy

SIZES

One Size

FINISHED MEASUREMENTS

Circumference: 45½"

Height: 12¾"

MATERIALS

Universal Yarn *Posh Alpaca* (45% wool, 30% acrylic, 25% superfine alpaca; 100g/98 yds)

- 103 Wolf (B) – 3 balls

Needles: US Size 13 (9 mm) 32" circular
or size needed to obtain gauge)

US Size 11 (8 mm) 32" circular

Notions: Tapestry needle, stitch marker

GAUGE

10 sts x 18 rnds = 4" in Peaks patt with larger ndl

Save time, check your gauge.

Knit, Relax, Smile, Repeat!

2021 © Universal Yarn, Inc.

www.universalyarn.com

All rights reserved. This pattern may not be reproduced for business, trade or sale.

Questions? Contact patterns@universalyarn.com

PATTERN NOTES

Inspired by foggy mornings in the Appalachian Mountains, the Smoky Mountain Cowl is plush and perfect for keeping you warm during cool mornings and crisp autumn walks. It features a motif of simple twisted stitch triangles that mimics the peaks of mountains.

This cowl is knit in the round from the bottom up.

STITCH GUIDE

Left Twist (LT): Knit the second st on the left ndl through the back loop, knit the first st through the front loop, slip both sts from ndl.

Right Twist (RT): K2tog but do not slip st from ndl, knit the first st again, slip both sts from ndl.

Peaks

(multiple of 6 sts)

Rnd 1: Purl.

Rnd 2: Knit.

Rnd 3: * LT, k2, RT; rep from * to end.

Rnd 4: Knit.

Rnd 5: * K1, LT, RT, k1; rep from * to end.

Rnd 6: Knit.

Rep Rnds 1-6 for patt.

COWL

Lower Border

With smaller ndl, cast on 114 sts. PM and join to knit in the rnd, being careful not to twist.

Rnd 1: Purl.

Rnd 2: Knit.

Rnd 3: Purl.

Change to larger ndl.

Peaks Section

Rnd 1: Work Rnd 1 of Peaks patt to end. Patt will be repeated 19 times across each rnd.

Cont as est'd through Rnd 6 of Peaks patt. Rep Rnds 1-6 of Peaks patt 6 more times, then rep Rnd 1, one more time.

Change to smaller ndl.

Upper Border

Rnd 1: Purl.

Rnd 2: Knit.

Rnd 3: Purl.

Bind off all sts kwise.

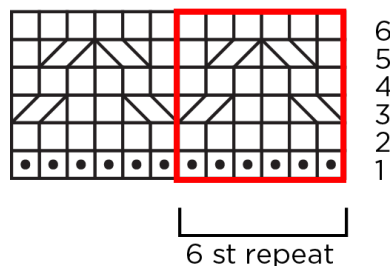
FINISHING

Gently wash and block to finished measurements. Weave in ends.

Abbreviations

cont	continue
est'd	established
k	knit
k2tog	knit 2 stitches together (1 st dec'd)
kwise	knitwise
ndl	needle
p	purl
patt	pattern
pm	place marker
rep	repeat
rnd	round
st(s)	stitch(es)

Peaks



Key

	pattern repeat
	purl
	knit
	RT
	LT

Knit, Relax, Smile, Repeat!

2021 © Universal Yarn, Inc.

www.universalyarn.com

All rights reserved. This pattern may not be reproduced for business, trade or sale.

Questions? Contact patterns@universalyarn.com