



Pattern Collection: Women



Sizzle Lace Scarf

Designed by Universal Yarn Design Team

FINISHED MEASUREMENTS

Depth in Center: 12"

Width along Top Edge: 62¼"

MATERIALS

Universal Yarn *Uptown DK* (100% anti-pilling acrylic; 100g/273 yds)

- 139 Bright Salmon – 2 balls

Needles: US Size 6 (4 mm) 40" circular needle *or size needed to obtain gauge*

Notions: Tapestry needle

GAUGE

19 sts x 26 rows = 4" in St st

Save time, check your gauge.

Knit, Relax, Smile, Repeat!

2016 © Universal Yarn, Inc.

All rights reserved.

www.universalyarn.com

This pattern may not be reproduced for business, trade or sale.

PATTERN NOTES

This crescent shaped scarf is knit from the bottom up. After the Leaf Lace border is worked, the top of the scarf is shaped with short-rows.

STITCH GUIDE

Leaf Lace (*multiples of 10 sts + 6*)

Row 1 (RS): K1, yo, * k3, sl 1-k2tog-pss0, k3, yo, k1, yo; rep from * to last 5 sts, k3, k2tog.

WS Rows 2-24: Purl.

Rows 3 & 5: Rep Row 1.

Row 7: K2, * yo, k2, sl 1-k2tog-pss0, k2, yo, k3; rep from * to last 4 sts, end, yo, k2, k2tog.

Row 9: K2, * k1, yo, k1, sl 1-k2tog-pss0, k1, yo, k4; rep from * to last 4 sts, end, k1, yo, k1, k2tog.

Row 11: K2, * k2, yo, sl 1-k2tog-pss0, yo, k5; rep from * to last 4 sts, end k2, yo, k2tog.

Rows 13, 15 & 17: Ssk, k1, * k2, yo, k1, yo, k3, sl 1-k2tog-pss0, k1; rep from * to last 3 sts, end k2, yo, k1.

Row 19: Ssk, k1, * k1, yo, k3, yo, k2, sl 1-k2tog-pss0, k1; rep from * to last 3 sts, end k1, yo, k2.

Row 21: Ssk, k1, * yo, k5, yo, k1, sl 1-k2tog-pss0, k1; rep from * to last 3 sts, end yo, k3.

Row 23: Ssk, yo, * k7, yo, sl 1-k2tog-pss0, yo; rep from * to last 4 sts, end k4.

SHAWLETTE

Cast on 446 sts. Work Rows 1-24 of Leaf Lace, one time.

Dec row (RS): K6, * k3, k2tog; rep from * to last 10 sts, end k10 – 360 sts rem.

Knit 2 rows. Place marker at halfway point, between 180 and 181 sts.

Garter Stitch Short-Row Section 1

Row 1 (RS): Knit to m, sl m, k10, turn.

Row 2: Sl 1, k19, turn.

Row 3: Knit to 1 st bef turning point, k2tog (closing gap), k17, turn.

Row 4: Knit to 1 st bef turning point, k2tog (closing gap), k17, turn.

Rep last row, 16 more times.

Next row: Knit to turning point, k2tog, knit to end.

Next row: Rep last row – 340 sts rem.

Knit 2 rows.

Eyelet Short-Row Section

Row 1 (RS): K2, [yo, k2tog] to m, sl m, [yo, k2tog] 5 times, turn.

Row 2: Sl 1, p9, turn.

Row 3: [Yo, k2tog] to 2 sts bef turning point, yo, k3tog (closing gap), [yo, k2tog] 3 times, turn.

Row 4: Sl 1, purl to turning point 1 st bef, p2tog, p6, turn.

Rep last 2 rows, 10 more times – 318 sts rem.

Next row: [Yo, k2tog] to 2 sts bef turning point, yo, k3tog, [yo, k2tog] to last 2 sts, end k2.

Next row: Knit to 1 st bef turning point, k2tog, purl to end – 316 sts rem.

Garter Stitch Short-Row Section 2

Row 1 (RS): Knit to m, sl m, k10, turn.

Row 2: Sl 1, k19, turn.

Row 3: Knit to 1 st bef turning point, k2tog, k15, turn.

Row 4: Knit to 1 st bef turning point, k2tog, k15, turn. Rep last row, 16 more times.

Next row: Knit to turning point, k2tog, knit to end.

Next row: Rep last row – 296 sts rem.

Bind off all sts.

FINISHING

Weave in ends and block.

Abbreviations

| | |
|------------------|--|
| circ | circular |
| dec('d) | decrease(d) |
| garter st | knit every row |
| inc('d) | increase(d) |
| k | knit |
| k2tog | knit 2 stitches together (1 st dec'd) |
| m | marker |
| meas | measures |
| ndl | needle |
| patt | pattern |
| p | purl |
| pm | place marker |
| p2tog | purl 2 sts together (1 st dec'd) |
| pss0 | pass slipped stitch(es) over |
| rem | remain(ing) |
| rep | repeat |
| RS | right side |
| sl | slip |
| ssk | slip next 2 sts individually knitwise, slip them back to left needle in this |

Knit. Relax. Smile. Repeat!

2016 © Universal Yarn, Inc.

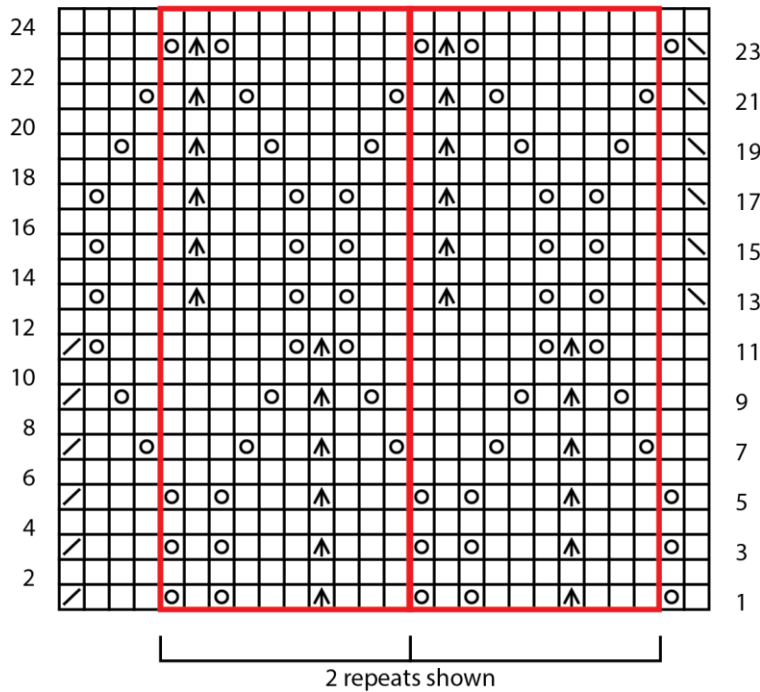
All rights reserved.

www.universalyarn.com

This pattern may not be reproduced for business, trade or sale.

st(s) position, knit them together
 through the back loops (1 st dec'd)
 stitch(es)
St st Stockinette stitch (knit on RS rows,
 purl on WS rows; in the rnd, knit
 every rnd)
tbl through the back loop(s)
tog together
WS wrong side
yo yarn over

Leaf Lace



Key

-  knit on RS, purl on WS
-  yo
-  k2tog
-  ssk
-  sl 1-k2tog-ssk
-  pattern repeat

Knit, Relax, Smile, Repeat!

2016 © Universal Yarn, Inc.
 All rights reserved.
 www.universalyarn.com

This pattern may not be reproduced for business, trade or sale.