



PATTERN COLLECTION

Accessories



Shackleford Shawl

Designed by Rachel Brockman

SKILL

Knitting

DIFFICULTY

Easy

SIZES

One Size

FINISHED MEASUREMENTS

Wingspan: 48¾"

Depth at Center: 24¾"

MATERIALS

[Yarn Vibes Organic Sportweight](#) (100% Irish Organic Wool; 100g/328 yds)

- 09 Summer Sky (MC) - 1 skein
- 07 Harvest Sky (CC) - 1 skein

Needles: US Size 7 (4.5 mm) 32" circular or longer (to accommodate large number of sts)

Notions: Tapestry needle, stitch markers

GAUGE

20 sts x 24 rows = 4" in Stockinette stitch (St st)

Save time, check your gauge.

Knit, Relax, Smile, Repeat!

2023 © Universal Yarn, Inc.

www.universalyarn.com

All rights reserved. This pattern may not be reproduced for business, trade or sale.

Questions? Contact patterns@universalyarn.com

PATTERN NOTES

The Shackleford Shawl exudes moody ocean vibes. The fabric features a stitch pattern inspired by the crests and crashes of ocean waves. Basic increases and decreases make the undulating motif possible, so this pattern is perfect for a knitting newbie. Knit in Yarn Vibes Organic Sportweight, the shawl is lightweight yet warm and blooms beautifully.

This shawl is knit flat from the top-down. It features basic increases and decreases to form an undulating motif. Stitches are bound off using the suspended bind-off method.

PATTERN BEGINS

With MC, cast on 11 sts.

Row 1 (RS): K3, pm, [kfb] 2 times, pm, k1, pm, [kfb] 2 times, pm, k3 – 4 sts inc'd, 15 sts.

Row 2 (WS): K3, sl m, purl to m, sl m, k1, sl m, purl to m, sl m, k3.

Row 3: K3, sl m, kfb, knit to 1 st bef m, kfb, sl m, k1, sl m, kfb, knit to 1 st bef m, kfb, sl m, k3 – 4 sts inc'd – 19 sts.

Rows 4-7: Rep Rows 2-3, 2 times – 8 sts inc'd, 27 sts.

Row 8: Rep Row 2. Join CC. Do not break MC.

Row 9: With CC, rep Row 3 – 4 sts inc'd, 31 sts.

Row 10: With CC, knit.

Rows 11-12: Rep Rows 9-10 – 4 sts inc'd, 35 sts. Break CC. Cont with MC only.

Row 13: With MC, k3, sl m, kfb, * ssk, k3, [kfb] 2 times, k3, k2tog; rep from * to 1 st bef m, kfb, sl m, k1, sl m, kfb, * ssk, k3, [kfb] 2 times, k3, k2tog; rep from * to 1 st bef m, kfb, sl m, k3 – 4 sts inc'd, 39 sts.

Row 14: With MC, k3, sl m, purl to m, sl m, k1, sl m, purl to m, sl m, k3.

Row 15: With MC, k3, sl m, kfb, k1, * ssk, k3, [kfb] 2 times, k3, k2tog; rep from * to 2 sts bef m, k1, kfb, sl m, kfb, k1, * ssk, k3, [kfb] 2 times, k3, k2tog; rep from * to 2 sts bef m, k1, kfb, sl m, k3 – 4 sts inc'd, 43 sts.

Row 16: With MC, rep Row 14.

Row 17: With MC, k3, sl m, kfb, k2, * ssk, k3, [kfb] 2 times, k3, k2tog; rep from * to 3 sts bef m, k2, kfb, sl m, k1, sl m, kfb, k2, * ssk, k3, [kfb] 2 times, k3, k2tog; rep from * to 3 sts bef m, k2, kfb, sl m, k3 – 4 sts inc'd, 47 sts.

Row 18: With MC, rep Row 14.

Row 19: With MC, k3, sl m, kfb, k3, * ssk, k3, [kfb] 2 times, k3, k2tog; rep from * to 4 sts bef m, k3, kfb, sl m, k1, sl m, kfb, k3, * ssk, k3, [kfb] 2 times, k3, k2tog; rep from * to 4 sts bef m, k3, kfb, sl m, k3 – 4 sts inc'd, 51 sts.

Row 20: With MC, rep Row 14. Join CC.

Row 21: With CC, k3, sl m, kfb, knit to 1 st bef m, kfb, sl m, k1, sl m, kfb, knit to 1 st bef m, kfb, sl m, k3 – 4 sts inc'd, 55 sts.

Row 22: With CC, knit.

Rows 23-24: With CC, rep Rows 21-22 – 4 sts inc'd, 59 sts.

Rep Rows 13-24, 10 more times – 240 sts inc'd, 299 sts.

Next Row (RS): With CC, k3, sl m, kfb, knit to 1 st bef m, kfb, sl m, k1, sl m, kfb, knit to 1 st bef m, kfb, sl m, k3 – 4 sts inc'd, 303 sts.

Next Row (WS): With CC, knit.

With CC, bind off all sts kwise using the suspended bind-off method.

FINISHING

Gently wash and block to finished measurements. Weave in ends.

Abbreviations

CC	contrast color
circ	circular
inc('d)	increase(d)
k	knit
k2tog	knit 2 stitches together (1 st dec'd)
kfb	knit into front and back of next st (1 st inc'd)
kwise	knitwise
m	marker
p	purl
patt	pattern
pm	place marker
rep	repeat
RS	right side
sl	slip
ssk	slip next 2 sts individually knitwise, slip them back to left needle in this position, knit them together through the back loops (1 st dec'd)
St st	Stockinette stitch (knit on RS rows, purl on WS rows; in the rnd, knit every rnd)
st(s)	stitch(es)
WS	wrong side

Knit, Relax, Smile, Repeat!

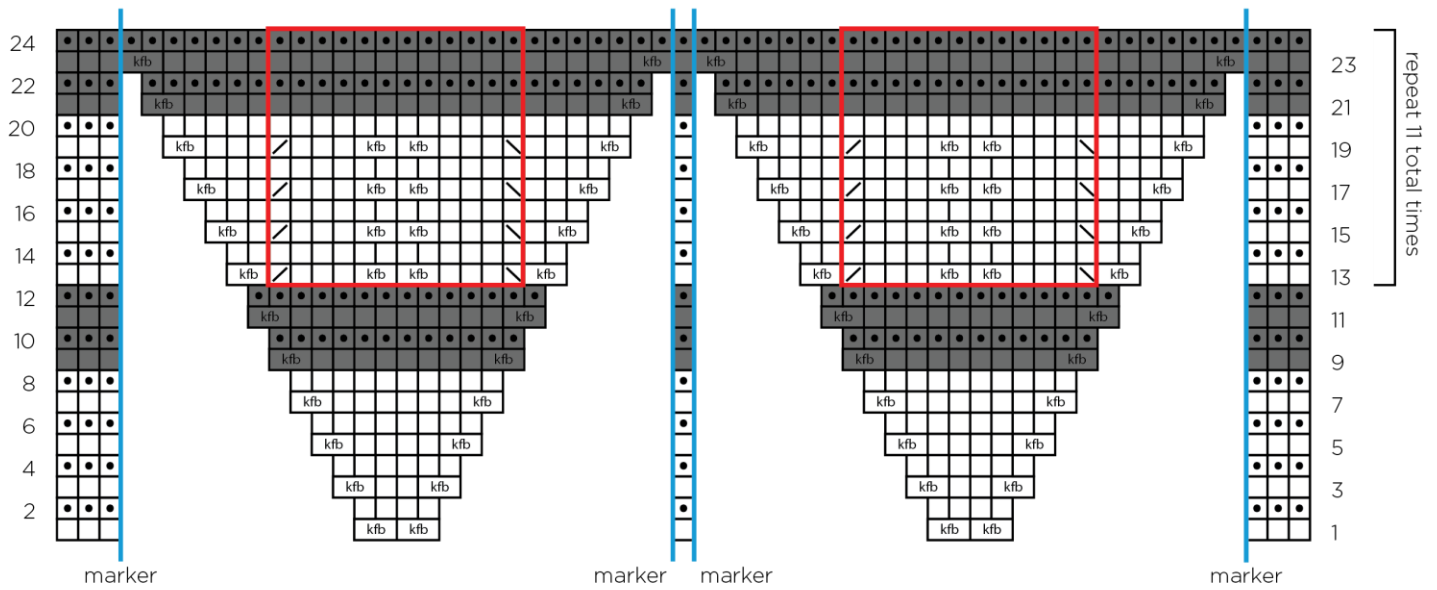
2023 © Universal Yarn, Inc.

www.universalyarn.com

All rights reserved. This pattern may not be reproduced for business, trade or sale.

Questions? Contact patterns@universalyarn.com

Shawl



Key

- | indicates marker
- pattern repeat
- with MC, knit on RS, purl on WS
- with MC, purl on RS, knit on WS
- kfb with MC, kfb
- with CC, knit on RS, purl on WS
- with CC, purl on RS, knit on WS
- kfb with CC, kfb

Knit, Relax, Smile, Repeat!

2023 © Universal Yarn, Inc.

www.universalyarn.com

All rights reserved. This pattern may not be reproduced for business, trade or sale.

Questions? Contact patterns@universalyarn.com