



## Pattern Collection: Women



### Sequoia

Designed by Amy Gunderson

### SIZES

Extra Small (Small, Medium, Large/1X, 2X, 3X, 4X)

Shown in Small size modeled with 3¾" of positive ease.

### FINISHED MEASUREMENTS

**Bust:** 30¾ (35¾, 40½, 45½, 50½, 55¾, 60¾)"

**Length:** 22½ (23, 23½, 24, 24½, 25, 25½)"

### MATERIALS

**Universal Yarn Deluxe Bulky Superwash** (100% superwash wool; 100g/106 yds)

- 906 Greenery – 6 (7, 9, 10, 11, 12, 13) balls

**Needle:** US Size 10½ (6.5 mm) straight, 16" circular (for neck edging) *or size needed to obtain gauge*

**Notions:** Tapestry needle, stitch markers, stitch holders, cable needle (cn)

### GAUGE

13 sts x 16 rows = 4" in St st  
28-st Sequoia Cable panel = 6¾" wide

**Save time, check your gauge.**

*Knit. Relax. Smile. Repeat!*

2018 © Universal Yarn, Inc.

All rights reserved.

[www.universalyarn.com](http://www.universalyarn.com)

This pattern may not be reproduced for business, trade or sale.

## PATTERN NOTES

Giant sequoias are the largest trees in the world and inspired the name for this relaxed sweater that features a dramatic cable panel on the front. The cable is carried into the high neck where it sits as a loose and comfortable turtleneck. Knit in Deluxe Bulky Superwash, this gorgeous sweater is easy to care for and knits up much more quickly than the time it takes beautiful sequoias to grow!

This sweater is knit in pieces from the bottom up. Stitches at the tops of all pieces are placed on holders, and the cowl neck is knit upward in the round after seaming. The single knit stitch on the edge of all pieces is included to make seaming easier.

## STITCH GUIDE

### K2, P2 Ribbing (for Front and Back)

(multiple of 4 sts + 2)

**Row 1 (RS):** \* P2, k2; rep from \* to last 2 sts, p2.

**Row 2 (WS):** K2, \* p2, k2; rep from \* to end.

Rep Rows 1-2 for patt.

### K2, P2 Ribbing (for Sleeves)

(multiple of 4 sts)

**Row 1:** \* K2, p2; rep from \* to end.

Rep Row 1 for patt.

**6x6 Right Cross (RC):** Sl next 6 sts to cn and hold in back, k6 from left ndl, k6 from cn.

**6x6 Left Cross (LC):** Sl next 6 sts to cn and hold in front, k6 from left ndl, k6 from cn.

### Sequoia Cable

(panel of 28 sts)

**Row 1 (RS):** K4, [6x6 RC] 2 times.

**Row 2 (WS):** Purl.

**Row 3:** Knit.

**Rows 4-12:** Cont even in St st.

**Row 13:** [6x6 LC] 2 times, k4.

**Rows 14-24:** Cont even in St st.

Rep Rows 1-24 for patt.

## FRONT

Cast on 52 (60, 68, 76, 84, 92, 100) sts.

## Hem

**Row 1 (RS):** K1, work Row 1 of K2, P2 Ribbing to last st, k1.

**Row 2 (WS):** P1, work Row 2 of K2, P2 Ribbing to last st, p1.

Rep Rows 1-2, 5 more times, then rep Row 1, 1 more time.

**Inc row (WS):** P1, work in est'd rib over 14 (18, 22, 26, 30, 34, 38) sts, pm, [p3, m1p] 3 times, p4, [m1p, p3] 3 times, pm, work in est'd rib over 14 (18, 22, 26, 30, 34, 38) sts, p1 – 6 sts inc'd, 58 (66, 74, 82, 90, 98, 106) sts; 28 sts bet markers in center of piece.

## Main Front

**Row 1 (RS):** K1, purl to m, sl m, work Row 1 of Sequoia Cable to m, sl m, purl to last st, k1.

**Row 2 (WS):** P1, knit to m, sl m, work Row 2 of Sequoia Cable to m, sl m, knit to last st, p1.

Cont as est'd through Row 24 of Sequoia Cable patt, keeping sts each side of cable in rev St st and edge sts in St st, until piece meas 15½" from cast-on edge, ending with WS row.

## Raglan Shaping

Bind off 2 (3, 4, 5, 6, 7, 8) sts at beg of next 2 rows – 54 (60, 66, 72, 78, 84, 90) sts rem. Work 4 (4, 2, 2, 0, 0, 0) rows even.

**Dec row (RS):** K1, ssp, work in patt to last 3 sts, p2tog, k1 – 2 sts dec'd.

**Next row (WS):** P1, work in patt to last st, p1.

Rep these 2 rows, 9 (9, 10, 9, 11, 10, 9) more times – 34 (40, 44, 52, 54, 62, 70) sts rem.

**Next row (RS):** Rep RS Dec row – 2 sts dec'd.

**Dec row (WS):** P1, k2tog, work in patt to last 3 sts, ssk, p1 – 2 sts dec'd.

Cont to work a dec row every row 0 (2, 4, 8, 8, 12, 16) more times – 30 (32, 32, 32, 34, 34, 34) sts rem. Break yarn, place sts on holder.

## BACK

Cast on 52 (60, 68, 76, 84, 92, 100) sts.

## Hem

**Row 1 (RS):** K1, work Row 1 of K2, P2 Ribbing to last st, k1.

*Knit. Relax. Smile. Repeat!*

2018 © Universal Yarn, Inc.

All rights reserved.

[www.universalyarn.com](http://www.universalyarn.com)

This pattern may not be reproduced for business, trade or sale.



**Row 2 (WS):** P1, work Row 2 of K2, P2 Ribbing to last st, p1.  
Rep Rows 1-2, 6 more times.

#### Main Back

**Row 1 (RS):** K1, purl to last st, k1.  
**Row 2 (WS):** P1, knit to last st, p1.  
Cont as est'd until piece meas 15½" from cast-on edge, ending with WS row.

#### Raglan Shaping

Bind off 2 (3, 4, 5, 6, 7, 8) sts at beg of next 2 rows – 48 (54, 60, 66, 72, 78, 84) sts rem. Work 4 (4, 2, 2, 0, 0, 0) rows even.  
**Dec row (RS):** K1, ssp, purl to last 3 sts, p2tog, k1 – 2 sts dec'd.  
**Next row (WS):** P1, knit to last st, p1.  
Rep these 2 rows, 9 (9, 10, 9, 11, 10, 9) more times – 28 (34, 38, 46, 48, 56, 64) sts rem.  
**Next row (RS):** Rep RS Dec row – 2 sts dec'd.

**Dec row (WS):** P1, k2tog, knit to last 3 sts, ssk, p1 – 2 sts dec'd.  
Cont to work a dec row every row 0 (2, 4, 8, 8, 12, 16) more times – 24 (26, 26, 26, 28, 28, 28) sts rem. Break yarn, place sts on holder.

#### SLEEVES

Cast on 26 (30, 30, 30, 34, 34, 34) sts.

#### Cuff

**Row 1 (RS):** K1, work Row 1 of K2, P2 Ribbing to last st, k1.  
**Row 2 (WS):** P1, work Row 1 of K2, P2 Ribbing to last st, p1.  
Rep Rows 1 & 2 until piece meas 5" from cast-on edge, ending with WS row.

#### Main Sleeve

**Row 1 (RS):** K1, purl to last st, k1.  
**Row 2 (WS):** P1, knit to last st, p1.  
**Inc row (RS):** K1, m1p, purl to last st, m1p, k1 – 2 sts inc'd. Rep Inc row every 4 (4, 4, 2, 2, 2, 2) rows, 3 (3, 8, 2, 2, 6, 9) more times, then rep Inc row every 6 (6, 6, 4, 4, 4, 4) rows, 4 (4, 1, 9, 9, 7, 6) time(s) – 42 (46, 50, 54, 58, 62, 66) sts. Work even as est'd until piece meas 18 (18, 18½, 18½, 18½, 18½, 18¾)" from cast-on edge, ending with WS row.

#### Raglan Shaping

Bind off 2 (3, 4, 5, 6, 7, 8) sts at beg of next 2 rows – 38 (40, 42, 44, 46, 48, 50) sts rem.  
**Dec row (RS):** K1, ssp, purl to last 3 sts, p2tog, k1 – 2 sts dec'd.  
**Next row (WS):** P1, knit to last st, p1.  
Rep these 2 rows, 8 (9, 10, 11, 12, 13, 14) more times – 20 sts rem (all sizes).  
**Next row (RS):** Rep RS Dec row – 2 sts dec'd.  
**Dec row (WS):** P1, k2tog, knit to last 3 sts, ssk, p1 – 2 sts dec'd.  
Cont to work a dec row every row 6 more times – 4 sts rem (all sizes). Break yarn, place sts on holder.

#### FINISHING

Weave in ends. Block pieces to finished measurements. Sew Raglan seams. Sew Sleeve and side seams.

*Knit. Relax. Smile. Repeat!*

2018 © Universal Yarn, Inc.

All rights reserved.

[www.universalyarn.com](http://www.universalyarn.com)

This pattern may not be reproduced for business, trade or sale.

## Collar

Place 24 (26, 26, 26, 28, 28, 28) held Back Neck sts, 4 Left Sleeve sts, 30 (32, 32, 32, 34, 34, 34) Front Neck sts, and 4 Right Sleeve sts onto 16 circ ndl – 62 (66, 66, 66, 70, 70, 70) sts. PM and join to work in the rnd.

**Rnd 1:** P2tog, purl to last 2 Back Neck sts, p2tog, p2tog over first 2 Left Sleeve sts, p1, p2tog over last Left Sleeve st and first Front Neck st, purl to m, sl m, work Next rnd of Sequoia Cable to m, sl m, purl to last Front Neck st, p2tog over last Front Neck st and first Right Sleeve st, p1, p2tog over last 2 Right Sleeve sts – 6 sts dec'd, 56 (60, 60, 60, 64, 64, 64) sts rem.

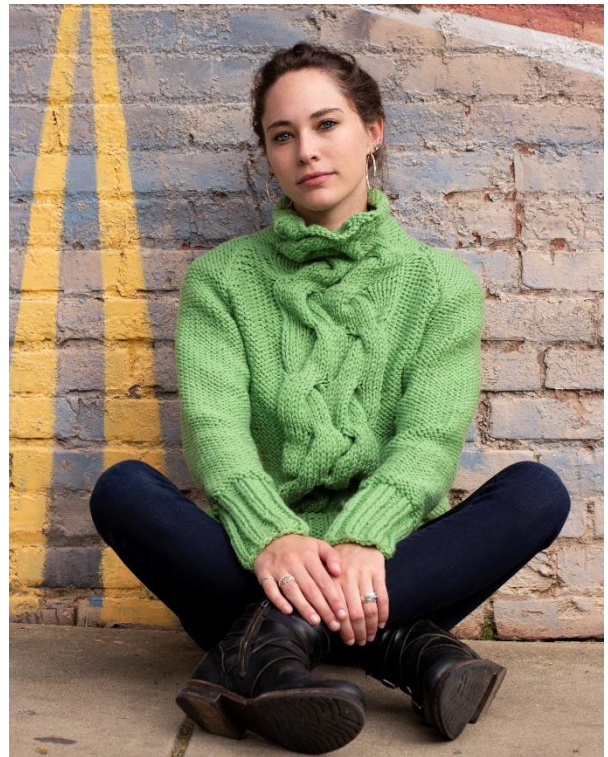
**Rnd 2:** Purl to m, sl m, work next rnd of Sequoia Cable to m, sl m, purl to end.  
Rep Rnd 2 until Collar meas 6¾”.

**Bind off rnd:** Bind off sts pwise to m, bind off 3 sts kwise, [k2tog, bind off this st, bind off 2 sts] 6 times (6 sts dec'd over Sequoia Cable panel), bind off rem sts pwise. Weave in rem end. Block Collar.

## Abbreviations

<b>beg</b>	begin(ning)
<b>bet</b>	between
<b>circ</b>	circular
<b>cn</b>	cable needle
<b>cont</b>	continue
<b>dec('d)</b>	decrease(d)
<b>est'd</b>	established
<b>inc('d)</b>	increase(d)
<b>k</b>	knit
<b>k2tog</b>	knit 2 stitches together (1 st dec'd)
<b>kwise</b>	knitwise
<b>m</b>	marker
<b>m1P</b>	insert left needle from back to front under horizontal strand of yarn lying between st just worked and next st, purl this st through the front loop (1 st inc'd)
<b>meas</b>	measures
<b>ndl</b>	needle
<b>p</b>	purl
<b>p2tog</b>	purl 2 sts together (1 st dec'd)
<b>patt</b>	pattern

<b>pm</b>	place marker
<b>pwise</b>	purlwise
<b>rem</b>	remain(ing)
<b>rep</b>	repeat
<b>rev St st</b>	reverse Stockinette stitch (purl on RS rows, knit on WS rows; in the rnd, purl every rnd)
<b>rnd</b>	round
<b>RS</b>	right side
<b>sl</b>	slip
<b>ssk</b>	slip next 2 sts individually knitwise, slip them back to left needle in this position, knit them together through the back loops (1 st dec'd)
<b>ssp</b>	slip next 2 sts individually knitwise, slip them back to left needle in this position, purl them together through the back loops (1 st dec'd)
<b>St st</b>	Stockinette stitch (knit on RS rows, purl on WS rows; in the rnd, knit every rnd)
<b>st(s)</b>	stitch(es)
<b>WS</b>	wrong side



*Knit. Relax. Smile. Repeat!*

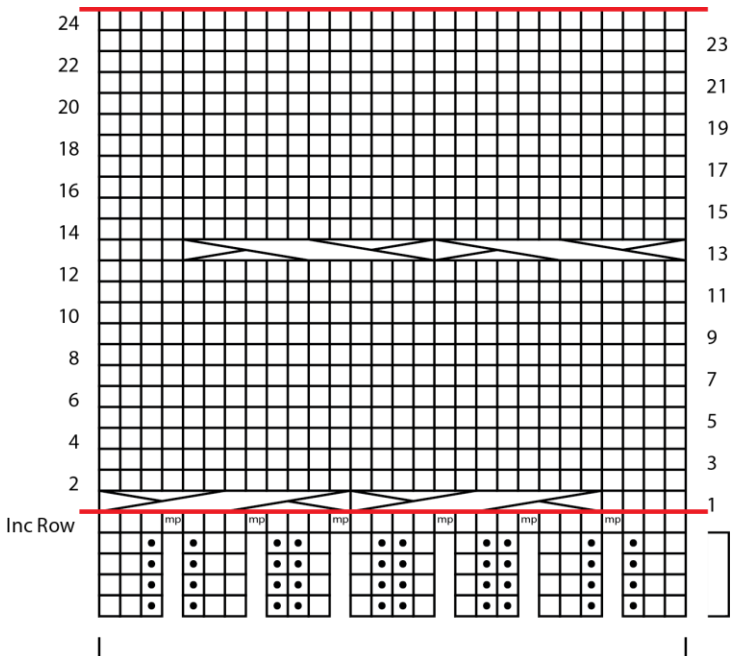
2018 © Universal Yarn, Inc.

All rights reserved.

[www.universalyarn.com](http://www.universalyarn.com)

This pattern may not be reproduced for business, trade or sale.

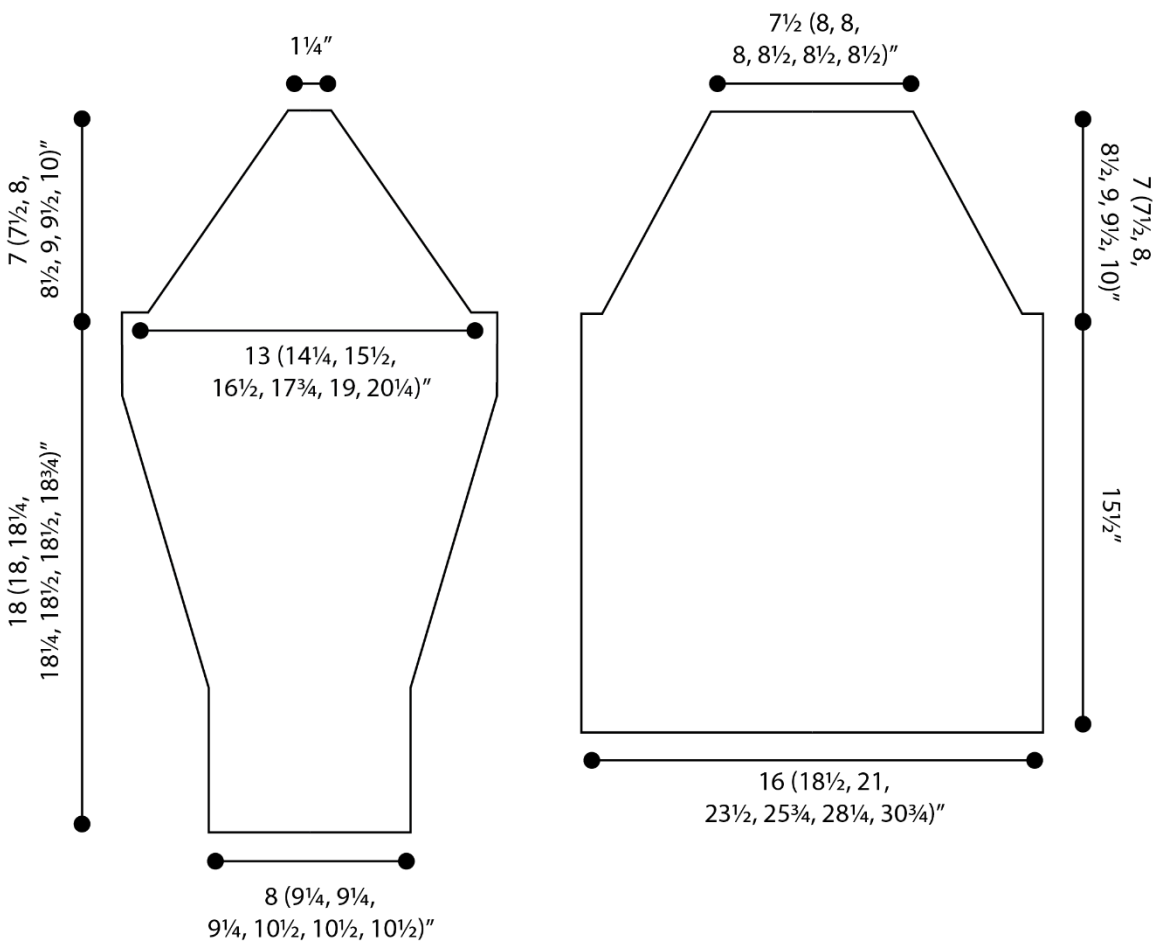
# Sequoia Cable



## Key

- knit on RS, purl on WS
- purl on RS, knit on WS
- m1p
- 6x6 RC
- 6x6 LC
- pattern repeat

cast on 22, increase to 28



*Knit. Relax. Smile. Repeat!*

2018 © Universal Yarn, Inc.

All rights reserved.

[www.universalyarn.com](http://www.universalyarn.com)

This pattern may not be reproduced for business, trade or sale.