



PATTERN COLLECTION

Home



Seedling Washcloths

Designed by Rachel Brockman

SKILL

Knitting

DIFFICULTY

Easy

SIZES

One Size

FINISHED MEASUREMENTS

Width (at widest point): 6"

Length: 9"

MATERIALS

Version A (pictured left)

[Universal Yarn Cotton Supreme Speckles](#) (100% cotton; 100g/180 yds)

- 1006 Green Bean - 1 skein

Version B (pictured right)

[Universal Yarn Cotton Supreme](#) (100% cotton; 100g / 180 yds)

- 623 Herb Green - 1 skein

Needle: US Size 8 (5 mm) straight (or your preferred ndl for knitting flat) *or size needed to obtain gauge*

Notions: Tapestry needle, stitch markers

GAUGE

19 sts x 28 rows = 4" in Stockinette Stitch (St st) after blocking

Save time, check your gauge.

Knit, Relax, Smile, Repeat!

2023 © Universal Yarn, Inc.

www.universalyarn.com

All rights reserved. This pattern may not be reproduced for business, trade or sale.

Questions? Contact patterns@universalyarn.com

PATTERN NOTES

Zhuzh up your every day with these fun leaf shaped washcloths made from our sumptuous cotton yarn. All you need is one skein of Cotton Supreme or Cotton Supreme Speckles and you are ready to go!

This washcloth is knit flat from the stem up with gradual increases and decreases to create the 'leaf' shape. Additional yarnover increases highlight the center stem. This pattern is both written and charted for your convenience.

PATTERN BEGINS

Stem

Cast on 6 sts.

Row 1 (RS): K2, pm, RT, pm, knit to end.

Row 2 (WS): Knit to m, sl m, purl to m, sl m, knit to end.

Rows 3-4: Rep Rows 1-2.

Increase Section

Row 5: Knit to m, yo, sl m, RT, sl m, yo, knit to end - 2 sts inc'd, 8 sts.

Row 6: K2, purl to last 2 sts, k2.

Row 7: Rep Row 5 - 2 sts inc'd, 10 sts.

Row 8: Knit to m, sl m, p2, sl m, knit to end.

Row 9: Rep Row 5 - 2 sts inc'd, 12 sts.

Row 10: K2, purl to last 2 sts, k2.

Row 11: Rep Row 5 - 2 sts inc'd, 14 sts.

Row 12: Rep Row 8.

Row 13: Rep Row 5 - 2 sts inc'd, 16 sts.

Row 14: K2, purl to last 2, k2.

Rows 15-26: Rep Rows 11-14, 3 times - 12 sts inc'd, 28 sts.

Even Section

Row 27: Knit to m, sl m, RT, sl m, knit to end.

Row 28: Knit to m, sl m, p2, sl m, knit to end.

Row 29: Rep Row 27.

Row 30: K2, purl to last 2 sts, k2.

Rows 29-38: Rep Rows 27-30, 2 times.

Decrease Section

Row 39: K2, ssk, knit to m, sl m, RT, sl m. knit to last 4 sts, k2tog, k2 - 2 sts dec'd, 26 sts rem.

Row 40: Knit to m, sl m, p2, sl m, knit to end.

Row 41: Rep Row 39 - 2 sts dec'd, 24 sts rem.

Row 42: K2, purl to last 2 sts, k2.

Rows 43-54: Rep Rows 39-42, 3 times - 12 sts dec'd, 12 sts rem.

Shape Tip

Note: On Row 55, remove the markers on each side of the center "spine" of the leaf.

Row 55: K2, ssk, k1, RT, k1, k2tog, k2 - 2 sts dec'd, 10 sts rem.

Row 56: K4, p2, k4.

Row 57: K2, ssk, RT, k2tog, k2 - 2 sts dec'd, 8 sts rem.

Row 58: K2, p4, k2.

Row 59: K2, ssk, k2tog, k2 - 2 sts dec'd, 6 sts rem.

Row 60: K2, p2, k2.

Row 61: K1, ssk, k2tog, k1 - 2 sts dec'd, 4 sts rem.

Row 62: K1, p2, k1.

Row 63: Ssk, k2tog - 2 sts dec'd, 2 sts rem.

Bind off rem 2 sts.

FINISHING

Gently wash and block to finished measurements. Weave in ends.

Abbreviations

dec('d)	decrease(d)
est'd	established
inc('d)	increase(d)
k	knit
k2tog	knit 2 stitches together (1 st dec'd)
m	marker
ndl	needle
p	purl
rem	remaining
rep	repeat
RS	right side
RT	right twist - K2tog but do not slip st from ndl, knit the first st again, slip both sts from ndl.
sl	slip
ssk	slip next 2 sts individually knitwise, slip them back to left needle in this position, knit them together through the back loops (1 st dec'd)
st(s)	stitch(es)
WS	wrong side
wyif	with yarn in front
yo	yarnover

Knit, Relax, Smile, Repeat!

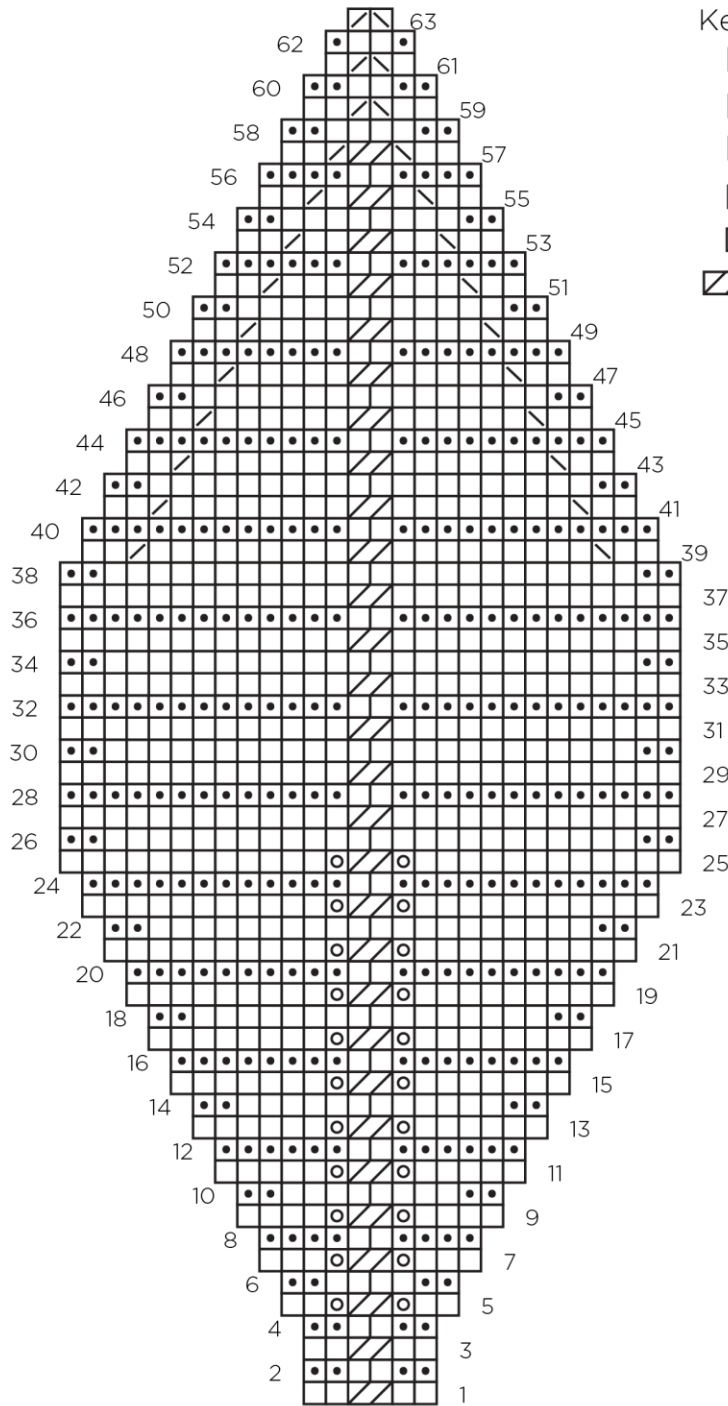
2023 © Universal Yarn, Inc.

www.universalyarn.com

All rights reserved. This pattern may not be reproduced for business, trade or sale.

Questions? Contact patterns@universalyarn.com

Seedling Washcloth Chart



- Key
-  knit on RS, purl on WS
 -  purl on RS, knit on WS
 -  yo
 -  k2tog
 -  ssk
 -  RT

Knit, Relax, Smile, Repeat!

2023 © Universal Yarn, Inc.

www.universalyarn.com

All rights reserved. This pattern may not be reproduced for business, trade or sale.

Questions? Contact patterns@universalyarn.com