



## Pattern Collection: Children



### Seahorse Tee

Designed by Rachel Brockman

### SIZES

2 (4, 6, 8, 10) years

### FINISHED MEASUREMENTS

**Chest:** 20¼ (22¼, 24¼, 26¼, 28¼)"

**Length:** 12 (13¼, 14½, 16, 17½)"

### MATERIALS

**Fibra Natura Cottonwood** (100% organic cotton; 50g/115 yds)

- 41101 Kara (A) – 2 (2, 3, 4, 5) balls
- 41112 Alana (B) – 1 ball
- 41126 Maria (C) – 1 ball
- 41107 Monica (D) – 1 ball

**Needles:** US Size 7 (4.5 mm) straight (*or size needed to obtain gauge*)

US Size 6 (4 mm) straight and set of dpns  
*or size needed to obtain gauge*

**Notions:** Tapestry needle, stitch marker

### GAUGE

22 sts x 28 rows = 4" in Stockinette  
Stitch (St st) on larger ndls

**Save time, check your gauge.**

**Knit, Relax, Smile, Repeat!**

2018 © Universal Yarn, Inc.

All rights reserved.

[www.universalyarn.com](http://www.universalyarn.com)

This pattern may not be reproduced for business, trade or sale.

## PATTERN NOTES

Fun fact: there are about 40 species of seahorses. Another fun fact: there are nearly as many colors of Cottonwood. What better yarn to pair with the Seahorse Tee? This children's tee is an excellent project to transition into warmer weather. Seahorse motifs and contrast color edgings make this colorful little project a joy to knit.

The Seahorse Chart is worked with intarsia. When switching to a new color, bring the old color up and around the new color to prevent any holes syarn for each section.

## STITCH GUIDE

### K1, P1 Rib

*(even number of sts, worked flat)*

**Row 1:** \* K1, p1; rep from \* to end.

Rep Row 1 for patt.

### K1, P1 Rib

*(even number of sts, worked in the rnd)*

**Rnd 1:** \* K1, p1; rep from \* to end.

Rep Rnd 1 for patt.

## TEE

### Front

#### Hem

With smaller ndls and D, cast on 58 (64, 68, 74, 80) sts. Work in K1, P1 Rib for 1", ending with a WS row. Break D, switch to larger ndls and A.

#### Body

**Row 1 (RS):** Knit to end.

**Row 2 (WS):** Purl to end.

Rep Rows 1-2 until Front meas 4½ (5½, 6½, 7¼, 8½)" from cast-on edge, ending with a WS row.

#### Begin Seahorse Pattern

**Row 1 (RS):** K5 (8, 10, 13, 16), pm, work Seahorse chart over 48 sts, pm, k5 (8, 10, 13, 16).

**Row 2 (WS):** Purl to m, sl m, work Seahorse chart to m, sl m, purl to end.

Rep Rows 1-2 until Rows 1-36 of Seahorse Chart are complete.

*At the same time*, when Front meas 7½ (8½, 9½, 10½, 11½)" from cast-on edge, cast on 6 (7, 8, 10, 11) sts at the beg of the next 2 rows – 70 (78, 84, 94, 102) sts.

Cont working as est'd until Front meas 10½ (11¾, 13, 14, 15½)" from cast-on edge, ending with a WS row.

### Shape Neck

**Row 1 (RS):** K31 (35, 37, 41, 44) Left Front sts, join a new ball of yarn and bind off 8 (8, 10, 12, 14) Neck sts, k31 (35, 37, 41, 44) Right Front sts. Place Left Front sts on holder.

**Next Row (WS):** Purl to end.

**Next Row:** Bind off 2 sts, cont as est'd to end – 29 (33, 35, 39, 42) sts rem.

**Dec Row (WS):** Purl to last 3 sts, p2tog, p1 – 1 st dec'd, 28 (32, 34, 38, 41) sts rem.

**Dec Row (RS):** K1, ssk, knit to end – 1 st dec'd, 27 (31, 33, 37, 40) sts rem.

Rep Dec Row every row 6 more times – 21 (25, 27, 31, 34) sts rem.

Cont, if necessary, as est'd until piece meas 1½ (1½, 1½, 2, 2)" from Neck bind off. Bind off all sts.

### Left Front

Return Left Front sts to ndl.

**Next Row (WS):** Bind off 2 sts, cont as est'd to end – 29 (33, 35, 39, 42) sts rem.

**Dec Row (RS):** Knit to last 3 sts, k2tog, k1 – 1 st dec'd, 28 (32, 34, 38, 41) sts rem.

**Dec Row (WS):** P1, ssp, purl to end – 1 st dec'd, 27 (31, 33, 37, 40) sts rem.

Rep Dec Row every row 6 more times – 21 (25, 27, 31, 34) sts rem.

Cont, if necessary, as est'd until piece meas 1½ (1½, 1½, 2, 2)" from Neck bind off. Bind off all sts.

### Back

#### Hem

With smaller ndls and D, cast on 58 (64, 68, 74, 80) sts. Work in K1, P1 Rib for 1", ending with a WS row. Break D, switch to larger ndls and A.

#### Body

**Row 1 (RS):** Knit to end.

**Row 2 (WS):** Purl to end.

Rep Rows 1-2 until Back meas 7½ (8½, 9½, 10½, 11½)" from cast-on edge.

Cast on 6 (7, 8, 10, 11) sts at the beg of the next 2 rows – 70 (78, 84, 94, 102) sts. Cont as est'd until Back meas 12 (13¼, 14½, 16, 17½)" from cast-on edge. Bind off all sts.

## Knit, Relax, Smile, Repeat!

2018 © Universal Yarn, Inc.

All rights reserved.

[www.universalyarn.com](http://www.universalyarn.com)

This pattern may not be reproduced for business, trade or sale.

## FINISHING

Block to finished measurements and weave in ends. Seam Front and Back together.

### Neckband

With small set of dpns and C, and beg at the Back Right shoulder, pick up and knit 26 (26, 28, 30, 32) sts along the Back neck, 12 (12, 12, 14, 14) sts along the Left Front edge, 8 (8, 10, 12, 14) Front Neck sts, and 12 (12, 12, 14, 14) sts along the Right Front Neck edge – 58 (58, 62, 70, 74) sts. PM and join to knit in the rnd.

**Rnd 1:** Work in K1, P1 Rib to end.

Rep Rnd 1 until Neckband meas 1". Bind off all sts in patt.

### Sleeve Edging

With small set of dpns and B, pick up and 52 (56, 60, 64, 68) sts along the armhole edge. PM and join to work in the rnd.

**Rnd 1:** \* K1, p1; rep from \* to end.

Rep Rnd 1 until Sleeve Edging meas 1".

## Abbreviations

<b>beg</b>	begin(ning)
<b>cont</b>	continue
<b>dpn(s)</b>	double pointed needle(s)
<b>est'd</b>	established
<b>k</b>	knit
<b>k2tog</b>	knit 2 stitches together (1 st dec'd)
<b>m</b>	marker
<b>meas</b>	measures
<b>ndl</b>	needle
<b>p</b>	purl
<b>p2tog</b>	purl 2 stitches together (1 st dec'd)
<b>patt</b>	pattern
<b>pm</b>	place marker
<b>rem</b>	remain
<b>rep</b>	repeat
<b>rnd</b>	round
<b>RS</b>	right side
<b>sl</b>	slip
<b>ssk</b>	slip next 2 sts individually knitwise, slip them back to left needle in this position, knit them

**ssp**

together through the back loops (1 st dec'd)

slip next 2 sts individually knitwise, slip them back to left needle in this position, purl them together through the back loops (1 st dec'd)

**st(s)**

stitch(es)

**WS**

wrong side



**Knit, Relax, Smile, Repeat!**

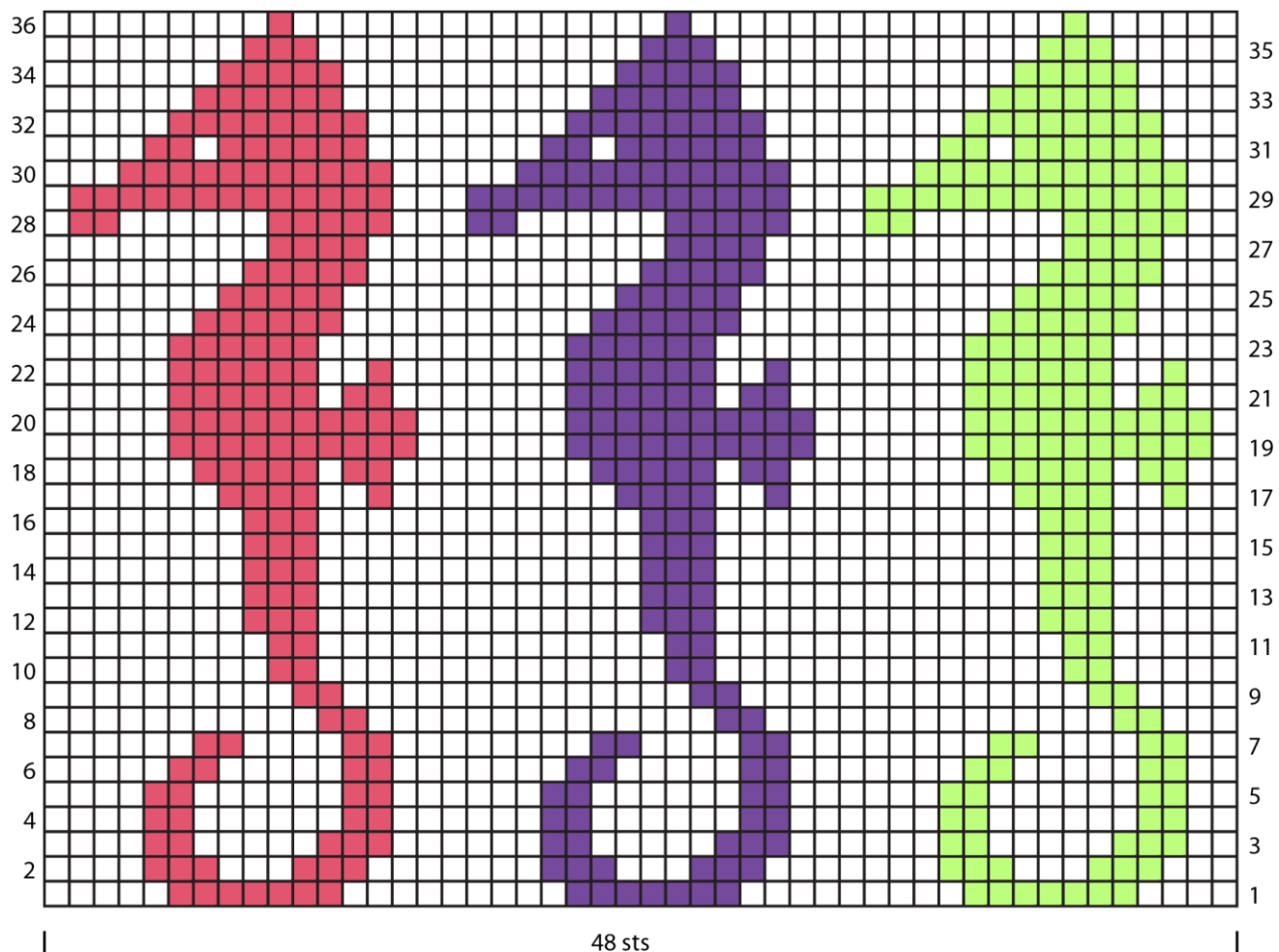
2018 © Universal Yarn, Inc.

All rights reserved.

[www.universalyarn.com](http://www.universalyarn.com)

This pattern may not be reproduced for business, trade or sale.

## Seahorse Chart



### Key

- With A, knit on RS, purl on WS
- With B, knit on RS, purl on WS
- With D, knit on RS, purl on WS
- With C, knit on RS, purl on WS

**Knit, Relax, Smile, Repeat!**

2018 © Universal Yarn, Inc.

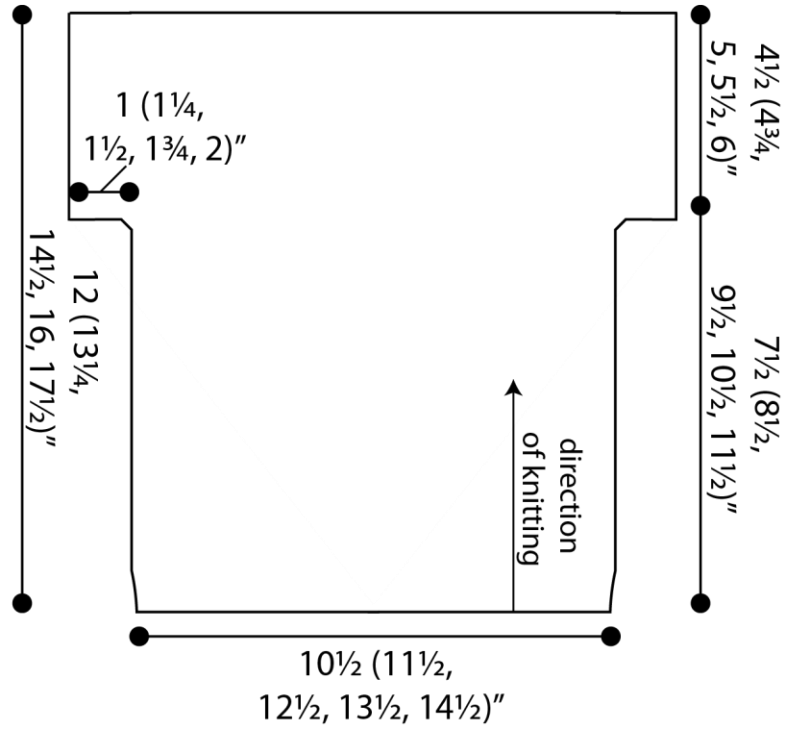
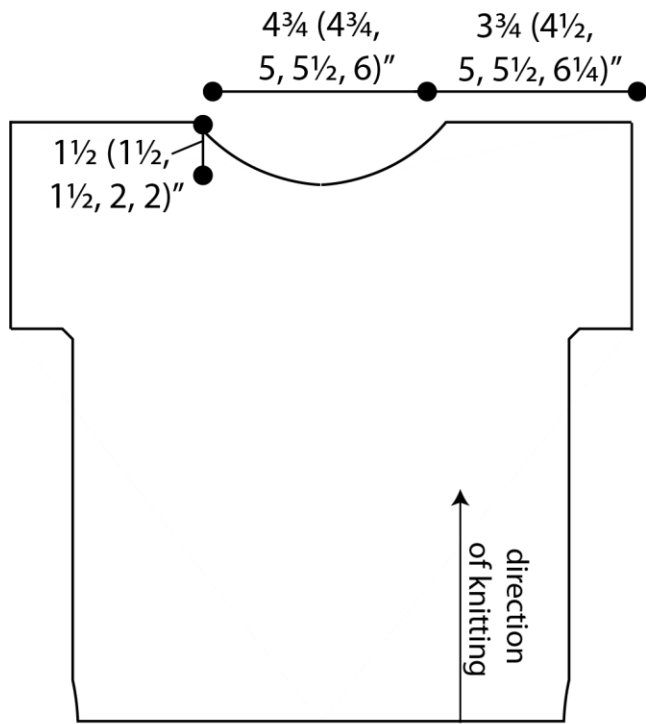
All rights reserved.

[www.universalyarn.com](http://www.universalyarn.com)

This pattern may not be reproduced for business, trade or sale.

Front

Back



**Knit, Relax, Smile, Repeat!**

2018 © Universal Yarn, Inc.  
 All rights reserved.  
[www.universalyarn.com](http://www.universalyarn.com)

This pattern may not be reproduced for business, trade or sale.