



PATTERN COLLECTION

Accessory



Seacoast Cowl - Knit

Designed by Rachel Brockman

DIFFICULTY

Easy

SIZES

One Size

FINISHED MEASUREMENTS

Circumference: 37"

Height: 9"

MATERIALS

[Universal Yarn Bamboo Pop](#) (50% bamboo, 50% cotton; 100g/292 yds)

- 305 Ocean Dots - 2 balls

Needle: US 6 (4 mm) 32" circular *or size needed to obtain gauge*

US Size 5 (3.75 mm) 32" circular

Notions: Tapestry needle, stitch markers

GAUGE

22 sts x 34 rnds = 4" in Gull Pattern using larger ndl

22 sts x 28 rnds = 4" in Net Pattern using larger ndl

Save time, check your gauge.

Knit, Relax, Smile, Repeat!

2022 © Universal Yarn, Inc.

www.universalyarn.com

All rights reserved. This pattern may not be reproduced for business, trade or sale.

Questions? Contact patterns@universalyarn.com

PATTERN NOTES

Inspired by visions of the coast, this cowl nods to the flight of seabirds and fishing nets.

Lightweight, smooth, and soft Bamboo Pop is the perfect yarn for summertime – and the blue speckled shade featured in this cowl is yet another reminder of trips to the shore. The alternating stitch patterns are simply a joy to knit. You'll make this cowl as swiftly as the ocean breeze!

This cowl is knit in the round from the bottom up.

STITCH GUIDE

Right-Leaning Long Stitch (RLS): K1 stitch 5 rows below the second stitch on the left-hand needle, stretching it to the height required for the current row – 1 st inc'd.

Left-Leaning Long Stitch (LLS): K1 stitch 6 rows below the second from left stitch on the right-hand needle (into the same st as the RLS), stretching it to the height required for the current row – 1 st inc'd.

Gull Pattern

(begins as multiple of 6 sts)

Set-up Rnd: Knit.

Rnds 1-4: Knit.

Rnd 5: * K2, RLS, k3, LLS, k1; rep from * to end – 2 sts inc'd per rep, 8 sts per rep.

Rnd 6: * K1, k2tog, k3, ssk; rep from * to end – 2 sts dec'd per rep, 6 sts per rep.

Rep Rnds 1-6 for patt.

Net Pattern

(multiple of 4 sts)

Rnd 1: Knit.

Rnd 2: * K1, yo, S2KP2, yo; rep from * to end.

Rep Rnds 1-2 for patt.

COWL

Lower Border

With smaller ndl, cast on 204 sts. PM and join to knit in the rnd, being careful not to twist.

Rnd 1: Purl.

Rnd 2: Knit.

Rnd 3: Purl.

Change to larger ndl.

Gull Section 1

Work Set-up Rnd of Gull Pattern to end – patt will be repeated 34 times across each rnd.

Work Rnds 1-6 of Gull Pattern three total times, then rep Rnd 1, 1 more time.

Net Section 1

Work Rows 1-2 of Net Pattern 4 total times, then rep Row 1, 1 more time.

Gull Section 2

Work as for Gull Section 1.

Net Section 2

Work as for Net Section 1.

Gull Section 3

Work as for Gull Section 1.

Upper Border

Change to smaller ndl.

Rnd 1: Purl.

Rnd 2: Knit.

Rnd 3: Purl.

Bind off all sts kwise.

FINISHING

Gently wash and block to finished measurements. Weave in ends.

Abbreviations

circ	circular
dec('d)	decrease(d)
garter st	knit every row
inc('d)	increase(d)
k	knit
k2tog	knit 2 stitches together (1 st dec'd)
m	marker
ndl	needle
p	purl
patt	pattern
pm	place marker
rep	repeat
rnd	round
S2KP2	slip 2 stitches as if to knit 2 together, knit 1, pass 2 slipped stitches over knit stitch; centered double decrease
ssk	slip next 2 sts individually knitwise, slip them back to left needle in this position, knit them together through the back loops (1 st dec'd)
St st	Stockinette stitch (knit on RS rows, purl on WS rows; in the rnd, knit every rnd)
st(s)	stitch(es)
yo	yarn over

Knit, Relax, Smile, Repeat!

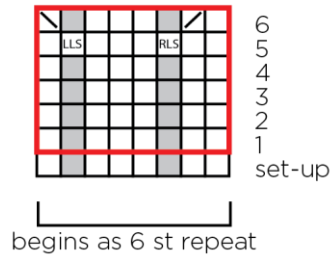
2022 © Universal Yarn, Inc.

www.universalyarn.com

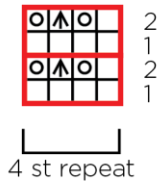
All rights reserved. This pattern may not be reproduced for business, trade or sale.

Questions? Contact patterns@universalyarn.com

Gull Pattern



Net Pattern



Key

-  pattern repeat
-  no stitch
-  knit
-  Right-Leaning Long Stitch (RLS)
-  Left-Leaning Long Stitch (LLS)
-  k2tog
-  ssk
-  yo
-  S2KP2



Knit, Relax, Smile, Repeat!

2022 © Universal Yarn, Inc.

www.universalyarn.com

All rights reserved. This pattern may not be reproduced for business, trade or sale.

Questions? Contact patterns@universalyarn.com



PATTERN COLLECTION

Accessory



Seacoast Cowl - Crochet

Designed by Rachel Brockman

DIFFICULTY

Easy

SIZES

One Size

FINISHED MEASUREMENTS

Circumference: 36"

Height: 7¾"

MATERIALS

[Universal Yarn Bamboo Pop](#) (50% bamboo, 50% cotton; 100g/292 yds)

- 305 Ocean Dots - 2 balls

Hook: US G-6 (4 mm)

Notions: Tapestry needle, removable stitch marker

GAUGE

20 sc x 23 rnds = 4" in pattern stitch

Save time, check your gauge.

Knit, Relax, Smile, Repeat!

2022 © Universal Yarn, Inc.

www.universalyarn.com

All rights reserved. This pattern may not be reproduced for business, trade or sale.

Questions? Contact patterns@universalyarn.com

PATTERN NOTES

Inspired by visions of the coast, this cowl nods to the flight of seabirds and fishing nets. Lightweight, smooth, and soft Bamboo Pop is the perfect yarn for summertime – and the blue speckled shade featured in this cowl is yet another reminder of trips to the shore. The alternating stitch patterns are a joy to create and make this loose-fitting cowl reversible. You'll make this cowl as swiftly as the ocean breeze!

This cowl is crocheted in the round.

STITCH GUIDE

Elongated Single Crochet (sc): Insert hk in the ch-sp 3 rows below and pull up a loop, stretching it to height required for the current row, yarn over and draw it through both loops on the hook.

COWL

Ch 181.

Set-up Rnd: Sc in 2nd ch from hk (1 skipped ch does not count as first sc), sc into the back bump of each ch across, sl st into top of 1st sc to join in the rnd – 180 sc. Place removable marker to indicate bor.

Rnd 1: Ch 1 (counts as 1 sc), [sc in next sc] 2 times, ch 1, sk next sc, [sc in next sc 2 times], * [sc in next sc] 3 times, ch 1, sk next sc, [sc in next sc] 2 times; rep from * to end, join with sl st into top of beg ch-1.

Rnd 2: Ch 1 (counts as 1 sc), [sc in next sc] 2 times, sc in next ch-1 sp, [sc in next sc] 2 times, * [sc in next sc] 3 times, sc in next ch-1 sp, [sc in next sc] 2 times; rep from * to end, join with sl st into top of beg ch-1.

Rnd 3: Ch 1 (counts as 1 sc), sc in each sc across, join with sl st into top beg ch-1.

Rnd 4: Ch 1 (counts as 1 sc), Elongated sc in the next ch-1 sp 3 rows below, sk next sc, [sc in next sc] 3 times, Elongated sc in same ch-1 sp 3 rows below, sk next sc, * sc in next sc, Elongated sc in the next ch-1 sp 3 rows below, sk next sc, [sc in next sc] 3 times, Elongated sc in same ch-1 sp 3 rows below, sk next sc; rep from * to end, join with sl st to top of beg ch-1.

Rnds 5-12: Rep Rnds 1-4, 2 times.

Rnd 13: Ch 3 (counts as hdc plus 1 ch), sk next sc, * hdc in next sc, sk next sc, ch 1; rep from * to end, join with sl st to top of beg ch-2.

Rnds 14-15: Ch 3 (counts as hdc plus 1 ch), sk next ch-1 sp, * hdc in next hdc, ch 1, sk next ch-1 sp; rep from * to end, join with st st to top of beg ch-2.

Rnd 16: Ch 1 (counts as sc), sc in next ch, * sc in next hdc, sc in next ch; rep from * to end, join with sl st into top of beg ch-1.

Rep Rnds 1-16, 1 more time, then rep Rnds 1-12, 1 time.

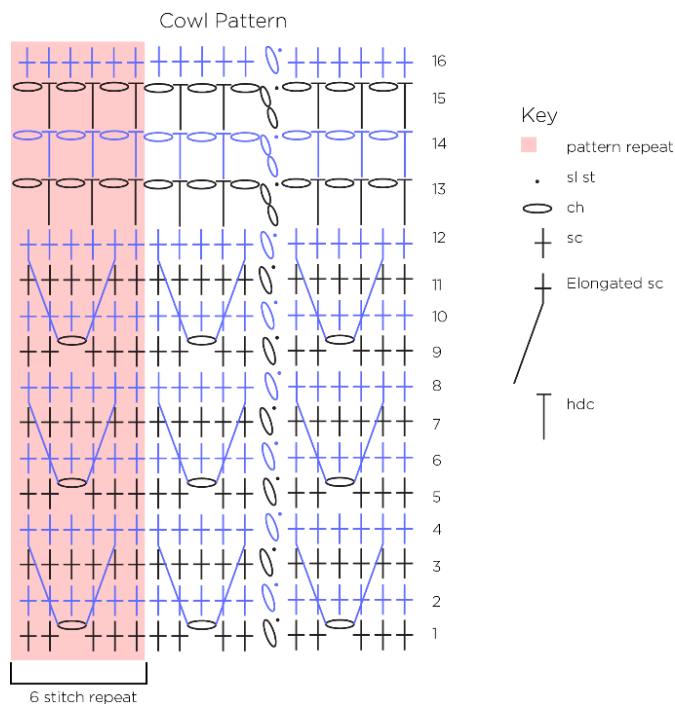
Final Rnd: Ch 1 (counts as sc), * sc in next sc; rep from * to end, join with sl st into top of beg ch-1. Fasten off.

FINISHING

Gently wash and block to finished measurements. Weave in ends.

Abbreviations

beg	begin(ning)
bor	beginning of round
ch	chain
ea	each
hdc	half double crochet
hk	hook
rep	repeat
rnd	round
sc	single crochet
sk	skip
sl	slip
st(s)	stitch(es)



Knit, Relax, Smile, Repeat!

2022 © Universal Yarn, Inc.

www.universalyarn.com

All rights reserved. This pattern may not be reproduced for business, trade or sale.

Questions? Contact patterns@universalyarn.com