



PATTERN COLLECTION

Accessories



Roundabout Scarf

Designed by Afifa Sayeed

SKILL

Knitting

DIFFICULTY

Intermediate

SIZES

One Size

FINISHED MEASUREMENTS

Width: 12½"

Length (from tip to tip): 62"

MATERIALS

[Fibra Natura Cashmere Lusso](#) (50% recycled cashmere, 50% virgin cashmere; 50g/246 yds)

- 10129 Celeste (A) – 2 balls
- 10134 Clematis (B) – 2 balls

Needles: US Size 5 (3.75 mm) 16" circular and set of DPNs (or your preferred needle for knitting small circumferences) *or size needed to obtain gauge*

Notions: Tapestry needle, stitch markers (one unique marker to denote bor), stitch holder or waste yarn

GAUGE

18 sts x 24 rows/rnds = 4" in Two-Color Slip Stitch Stripe patt

Save time, check your gauge.

Knit, Relax, Smile, Repeat!

2024 © Universal Yarn, Inc.

www.universalyarn.com

All rights reserved. This pattern may not be reproduced for business, trade or sale.

Questions? Contact patterns@universalyarn.com

PATTERN NOTES

The Roundabout Scarf features dappled stripes of high-contrast color for an impact. The central diamond is flanked by two sides that are worked on the bias and create a beautiful point at each end. Worked in our Cashmere Lusso yarn, you'll love enveloping your neck and shoulders in 100% cashmere. You deserve this special treat!

This two-color scarf is knit from the center out starting with a small number of stitches. The center is knit in the round until the desired width is achieved, half the stitches are then put on hold and each side is knit flat, back and forth in rows. Increases and decreases maintain the shape of the scarf on each side but do not affect the overall stitch count.

The Two-Color Slip Stitch Stripe pattern is used for your gauge swatch and is not specifically referenced in the pattern instructions. It is found in the Stitch Guide.

In this pattern, work all slipped stitches purlwise. The stitch patterns are also charted for your convenience.

STITCH GUIDE

Two-Color Slip Stitch Stripe

(odd number of sts, worked in the rnd)

Rnd 1: With color B, knit.

Rnd 2: With color A, k1, * sl 1 wyif, k1; rep from * to end.

Rnd 3: With color A, knit.

Rnd 4: With color B, k1, * sl 1 wyif, k1; rep from * to end.

Rnds 5-7: With color B, knit.

Rnd 8: Rep Rnd 2.

Rnds 9-11: With color A, knit.

Rnd 12: Rep Rnd 4.

Rnd 13: With color B, knit.

Rnd 14: Rep Rnd 2.

Rnds 15-17: With color A, knit.

Rnds 18-20: Rep Rnds 4-6.

Rep Rnds 1-20 for patt.

Two-Color Slip Stitch Stripe

(odd number of sts, worked flat)

Row 1 (RS): With color B, knit.

Join color A, do not break color B.

Row 2 (WS): With color A, p1, * sl 1 wyib, p1; rep from * to end.

Row 3: With color A, knit.

Row 4: With color B, rep Row 2.

Row 5: With color B, knit.

Row 6: With color B, purl.

Row 7: With color B, knit.

Row 8: With color A, rep Row 2.

Rows 9-11: With color A, rep Rows 5-7.

Rows 12-13: With color B, rep Rows 2-3.

Rows 14-17: With color A, rep Rows 4-7.

Rows 18-20: With color B, rep Rows 4-6.

Rep Rows 1-20 for patt.

PATTERN BEGINS

SCARF

Center

Change to 16" circ ntl when there are too many sts to fit comfortably on dpns.

With color A and DPNS, cast on 4 sts. Place unique marker to denote bor and join to knit in the rnd, being careful not to twist.

Rnd 1: * Kfb; rep from * to end - 4 sts inc'd, 8 sts.

Rnd 2: Knit.

Rnd 3: * Kfb, k1, pm; rep from * to end - 4 sts inc'd, 12 sts.

Rnd 4: Knit.

Rnd 5: * k1, m1R, knit to 1 st before m, m1L, k1, sl m; rep from * to end - 8 sts inc'd, 20 sts.

Rnd 6: Knit.

Rep Rows 5-6, two more times - 16 sts inc'd, 36 sts.

Establish Pattern

This section is also charted for your convenience. Follow "Center Chart."

Join color B, do not break color A.

Rnd 1: With color B, knit.

Rnd 2: With color B, * k1, m1R, knit to 1 st bef m, m1L, k1, sl m; rep from * to end - 8 sts inc'd, 44 sts.

Rnd 3: With color A, * k1, [sl 1 wyif, k1] to 2 sts bef m, k2, sl m; rep from * to end.

Rnd 4: With color A, * k1, m1R, knit to 1 st bef m, m1L, k1, sl m; rep from * to end - 8 sts inc'd, 52 sts.

Rnd 5: With color B, * k1, [sl 1 wyif, k1] to 2 sts bef m, k2, sl m; rep from * to end.

Rnd 6: Rep Rnd 2 - 8 sts inc'd, 60 sts.

Rnd 7: With color B, knit.

Rnds 8-10: Rep Rnds 2-4 - 16 sts inc'd, 76 sts.

Rnd 11: With color A, knit.

Rnds 12-13: Rep Rnds 4-5 - 8 sts inc'd, 84 sts.

Rnds 14-16: Rep Rnds 2-4 - 16 sts inc'd, 100 sts.

Rnd 17: With color A, knit.

Rnds 18-19: Rep Rnds 4-5 - 8 sts inc'd, 108 sts.

Rnd 20: Rep Rnd 2 - 8 sts inc'd, 116 sts.

Rep Rnds 1-20, one more time - 80 sts inc'd, 196 sts.

Knit, Relax, Smile, Repeat!

2024 © Universal Yarn, Inc.

www.universalyarn.com

All rights reserved. This pattern may not be reproduced for business, trade or sale.

Questions? Contact patterns@universalyarn.com

Sides

Note: You will now be working flat, in rows. Stitch count will not change, this section is knit on the bias.

Separation Row: Remove bor m, turn work, with color B, p98, keeping 1st m in place, remove 2nd m, place rem sts on stitch holder or waste yarn. Keep both yarns attached – 98 sts rem for each side.

Side 1

Note: This section is also charted for your convenience. Follow "Side Chart."

Row 1 (RS): With color B, k1, k2tog, knit to 1 st bef m, m1L, k1, sl m, k1, m1R, knit to last 3 sts, ssk, sl 1 wyif.

Row 2 (WS): With color A, k1, * sl 1 wyib, p1; rep from * to m, sl m, p1; rep from * to last 2 sts, p1, sl 1 wyif.

Row 3: With color A, k1, k2tog, knit to 1 st bef m, m1L, k1, sl m, k1, m1R, knit to last 3 sts, ssk, sl 1 wyif.

Row 4: With color B, k1, * sl 1 wyib, p1; rep from * to m, sl m, p1; rep from * to last 2 sts, p1, sl 1 wyif.

Row 5: Rep Row 1.

Row 6: With color B, k1, purl to last st, sl 1 wyif.

Rows 7-9: Rep Rows 1-3.

Row 10: With color A, k1, purl to last st, sl 1 wyif.

Row 11: Rep Row 3.

Row 12: Rep Row 4.

Rows 13-15: Rep Rows 1-3.

Row 16: Rep Row 10.

Row 17: Rep Row 3.

Row 18: Rep Row 4.

Row 19: Rep Row 1.

Row 20: Rep Row 6.

Rep Rows 1-20, 6 more times, then rep Rows 1-10, one more time. Bind off all sts kwise with color A.

Side 2

Return 98 held sts for opposite side to ndls ready to work a RS row. Complete as for Side 1.

FINISHING

Gently wash and block to finished measurements. Weave in ends.

Abbreviations

*	indicates a repeat section
bor	beginning of round
circ	circular
dpn(s)	double pointed needle(s)
inc('d)	increase(d)
k	knit
k2tog	knit 2 stitches together (1 st dec'd)
kwise	knitwise
m	marker



m1L	knit or purl this st through the back loop (1 st inc'd) Insert left needle from front to back under horizontal strand of yarn lying between st just worked and next st, knit or purl this st through the back loop (1 st inc'd)
m1R	insert left needle from back to front under horizontal strand of yarn lying between st just worked and next st, knit or purl this st through the front loop (1 st inc'd)
ndl	needle
p	purl
patt	pattern
pm	place marker
rep	repeat
rnd(s)	round(s)
RS	right side
sl	slip
ssk	slip next 2 sts individually knitwise, slip them back to left needle in this position, knit them together through the back loops (1 st dec'd)
st(s)	stitch(es)
WS	wrong side
wyib	with yarn held in back
wyif	with yarn held in front

Knit, Relax, Smile, Repeat!

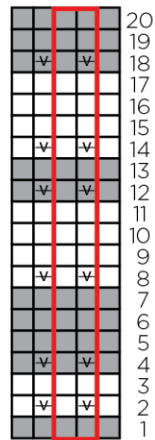
2024 © Universal Yarn, Inc.

www.universalyarn.com

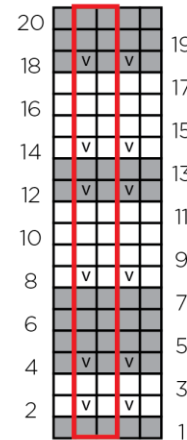
All rights reserved. This pattern may not be reproduced for business, trade or sale.

Questions? Contact patterns@universalyarn.com

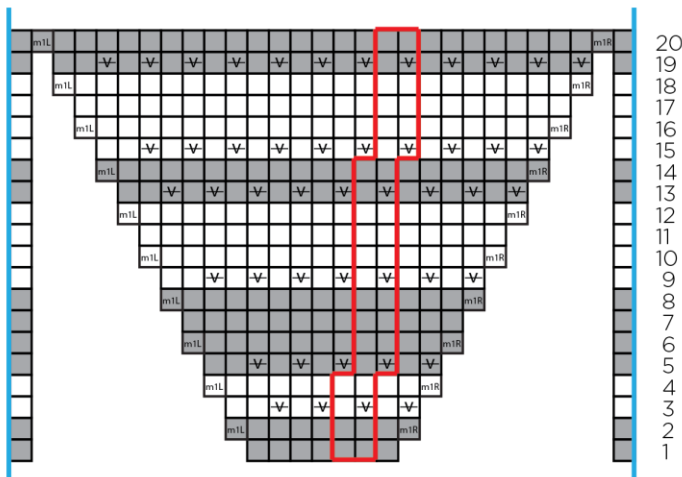
Two-Color Slip Stitch Stripe
(worked in the rnd)



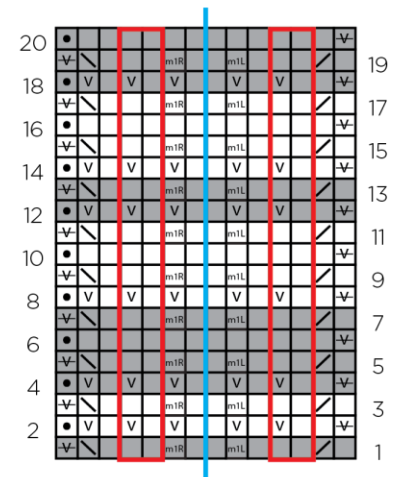
Two-Color Slip Stitch Stripe
(worked flat)



Center Chart



Side Chart



Key

- | indicates marker
- pattern repeat
- With color A, knit on RS, purl on WS
- With color B, knit on RS, purl on WS
- With color A, purl on RS, knit on WS
- With color B, purl on RS, knit on WS
- m1R With color A, m1R
- m1R With color B, m1R
- m1L With color A, m1L
- m1L With color B, m1L
- v With color A, sl 1 wyif
- v With color B, sl 1 wyif
- v With color A, sl 1 wyib
- v With color B, sl 1 wyib
- / With color A, ssk
- / With color B, ssk
- / With color A, k2tog
- / With color B, k2tog

Knit, Relax, Smile, Repeat!

2024 © Universal Yarn, Inc.

www.universalyarn.com

All rights reserved. This pattern may not be reproduced for business, trade or sale.

Questions? Contact patterns@universalyarn.com