



Pattern Collection: Accessories



Rosette Cowl

Designed by Rachel Brockman

DIFFICULTY

Easy

SIZES

One Size

FINISHED MEASUREMENTS

Circumference: 25½"

Height: 10¼"

MATERIALS

Rozetti Yarns *Nymph* (84% cotton, 15% polyamide; 50g/167 yds)

- 104 Antique Rose (A) – 3 balls

Needles: US Size 6 (4 mm) 16-24"

circular *or size needed to obtain gauge*

US Size 5 (3.75 mm) 16-24" circular

Notions: Tapestry needle, stitch marker

GAUGE

24 sts x 29 rnds = 4" in Mini Honeycomb
patt with larger ndl

Save time, check your gauge.

Knit. Relax. Smile. Repeat!

2020 © Universal Yarn, Inc.

All rights reserved.

www.universalyarn.com

This pattern may not be reproduced for business, trade or sale.

PATTERN NOTES

Knit in divinely soft Nymph, the Rosette Cowl is the perfect accessory for chilly days. A simple twisted stitch motif creates a beautiful textural pattern throughout most of this cowl, with tidy ribbing framing each edge.

This cowl is knit in the round from the bottom up.

STITCH GUIDE

Right Purl Twist (RPT): K2tog but do not slip st from ndl, purl the first st again, slip both sts from ndl.

Left Purl Twist (LPT): Purl the second st on the left ndl through the back loop, knit the first st through the front loop, slip both sts from ndl.

Mini Honeycomb

(multiple of 4 sts)

Rnd 1: * RPT, LPT; rep from * to end.

Rnd 2: * K1, p2, k1; rep from * to end.

Rnd 3: * LPT, RPT; rep from * to end.

Rnd 4: * P1, k2, p1; rep from * to end.

Rep Rnds 1-4 for patt.

COWL

With smaller ndl, cast on 152 sts. PM and join to knit in the rnd, being careful not to twist.

Lower Edge

Rnd 1: * P1, k2, p1; rep from * to end.

Rep Rnd 1 until piece meas 1½" from cast-on edge. Change to larger ndl.

Honeycomb Section

Rnd 1: Work Rnd 1 of Mini Honeycomb patt to end.

Rnd 2: Work Rnd 2 of Mini Honeycomb patt to end.

Rnd 3: Work Rnd 3 of Mini Honeycomb patt to end.

Rnd 4: Work Rnd 4 of Mini Honeycomb patt to end.

Rep Rnds 1-4, 12 more times. Piece meas approx. 8¾" from cast-on edge. Change to smaller ndl.

Upper Edge

Rnd 1: * P1, k2, p1; rep from * to end.

Rep Rnd 1 until piece meas 10¼" from cast-on edge. Bind off all sts in patt.

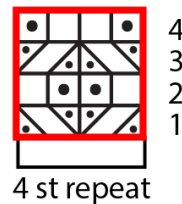
FINISHING

Gently wash and block to finished measurements. Weave in ends.






Abbreviations

approx	approximately
k	knit
k2tog	knit 2 stitches together (1 st dec'd)
m	marker
meas	measures
ndl	needle
p	purl
patt	pattern
pm	place marker
rep	repeat
rnd	round
st(s)	stitch(es)

Mini Honeycomb



Key

	pattern repeat
	knit
	purl
	RPT
	LPT

Knit. Relax. Smile. Repeat!

2020 © Universal Yarn, Inc.

All rights reserved.

www.universalyarn.com

This pattern may not be reproduced for business, trade or sale.