



## Pattern Collection: Women



### Rosemary Shrug

Designed by Rachel Brockman

#### SIZES

Extra Small/Small (Medium/Large,  
1X/2X)

Shown in size Extra Small/Small modeled  
with 6" of positive ease

#### FINISHED MEASUREMENTS

**Width:** 29 (31, 33¼)"

**Length:** 26¼ (30¼, 34¼)"

*Note: Measurements are taken before  
folding and seaming.*

#### MATERIALS

**Fibra Natura Cottonwood** (100% organic  
cotton; 50g/115 yds)

- 41115 Susan (MC) – 5 (7, 9) balls
- 41106 Vivian (CC) – 2 (2, 2) balls

**Needles:** US Size 7 (4.5 mm) 32" circular  
(to accommodate large number of sts)  
*or size needed to obtain gauge*

US Size 5 (3.75 mm) 32" circular *or size  
needed to obtain gauge*

**Notions:** Tapestry needle, stitch marker

#### GAUGE

16 sts x 26 rows = 4" in Lace Patt with  
larger ndls

24 sts x 32 rows = 4" in 1x1 Twisted Rib  
with smaller ndls

**Save time, check your gauge.**

**Knit, Relax, Smile, Repeat!**

2018 © Universal Yarn, Inc.

All rights reserved.

[www.universalyarn.com](http://www.universalyarn.com)

This pattern may not be reproduced for business, trade or sale.

## PATTERN NOTES

The Rosemary Shrug is an excellent addition to your warm-weather wardrobe. It features an airy, all-over lace motif and is finished with a shawl-collar neckband in a contrasting color. Toss it over your favorite tank or dress and you're ready to go.

**W&T:** Wrap and Turn. To wrap a stitch on RS rows, bring the yarn to the front of the work, slip the next st purlwise to the RH ndl, take the yarn to the back of the work, slip the st back to the left ndl, turn. To wrap a stitch on WS rows, take the yarn to the back of the work, slip the next st purlwise to the RH ndl, bring the yarn to the front of the work, slip the st back to the left ndl, bring the yarn to the front of the work, turn.

### Working together wrapped stitches:

On the right side of the work, bring the wrap up onto the needle with the stitch it was wrapped around and knit the 2 stitches together. On the wrong side of the work, bring the wrap up onto the needle with the stitch it was wrapped around and work a ssp with the two stitches.

s

## STITCH GUIDE

### Lace Pattern

*(multiple of 8 sts +1)*

**Row 1 (RS):** K1, \* k1, p1, k3, p1, k2; rep from \* to end.

**Row 2 (WS):** \* [P1, k1] 4 times; rep from \* to last st, p1.

**Row 3:** P1, \* k3, p1, k3, p1; rep from \* to end.

**Row 4:** \* [P1, k1] 4 times; rep from \* to last st, p1.

**Row 5:** K1, \* k1, p1, k3, p1, k2; rep from \* to end.

**WS Rows 6-12:** Purl to end.

**Row 7:** K1, \* yo, ssk, k3, k2tog, yo, k1; rep from \* to end.

**Row 9:** K1, \* k1, yo, ssk, k1, k2tog, yo, k2; rep from \* to end.

**Row 11:** K1, \* k2, yo, ssk, k4; rep from \* to end.  
Rep Rows 1-12 for patt.

### 1x1 Twisted Rib

*(even number of sts)*

**Row 1 (RS):** \* K1 tbl, p1 tbl; rep from \* to end.

**Row 2 (WS):** \* P1 tbl, k1 tbl; rep from \* to end.

Rep Rows 1-2 for patt.

## SHRUG

With larger ndls and MC, cast on 107 (123, 139) sts. Work 2 rows in Garter st.

**Set up Row 1 (RS):** Knit to end.

**Set up Row 2 (WS):** K1, pm, purl to last st, pm, k1.

**Next Row:** K1, sl m, work in Lace patt to m, sl m, k1. Cont as est'd, working Rows 1-12 of Lace patt 13 (14, 15) times, then work Rows 1-6 of Lace patt 1 more time. Lace patt will be repeated 13 (15, 17) times across each row. Piece meas approx 29 (31, 33¼)"

**Next Row (RS):** K1, remove m, knit to m, remove m, k1.

**Next Row:** Knit to end.

## FINISHING

Using Diagram as a guide, fold piece in half lining up each corner of the cast-on edge together. Line up each corner of the bind-off edge together, seam for 6½ (7½, 8)".

## Neckband

With RS facing and beginning at the side seam, with smaller ndls and CC, pick up and knit 174 (186, 200) sts evenly along edge.

**Row 1 (RS):** K1, work Row 1 of K1, P1 Twisted Rib to last st, k1.

**Row 2 (WS):** K1, work Row 2 of K1, P1 Twisted Rib to last st, k1.

Rep Rows 1-2 until Neckband meas 2", ending with a WS row.

### Short Row Shaping

**Row 1 (RS):** K1, work cont in K1, P1 Twisted Rib to last 9 sts, W&T.

**Row 2 (WS):** Cont as est'd to last 9 sts, W&T.

**Row 3:** Cont as est'd to 9 sts bef last wrapped st, W&T.

**Row 4:** Cont as est'd to 9 sts bef last wrapped st, W&T.

**Row 5:** Cont as est'd to 5 sts bef last wrapped st, W&T.

## Knit, Relax, Smile, Repeat!

2018 © Universal Yarn, Inc.

All rights reserved.

[www.universalyarn.com](http://www.universalyarn.com)

This pattern may not be reproduced for business, trade or sale.

**Row 6:** Cont as est'd to 5 sts bef last wrapped st, W&T.

**Rows 7-8:** Rep Rows 5-6.

**Row 9:** Cont as est'd to 3 sts bef last wrapped st, W&T.

**Row 10:** Cont as est'd to 3 sts bef last wrapped st, W&T.

**Rows 11-16:** Rep Rows 9-10, 3 more times.

**Rows 17-20:** K1, work K1, P1 Twisted Rib to last st, k1.

Bind off all sts in patt.

### Abbreviations

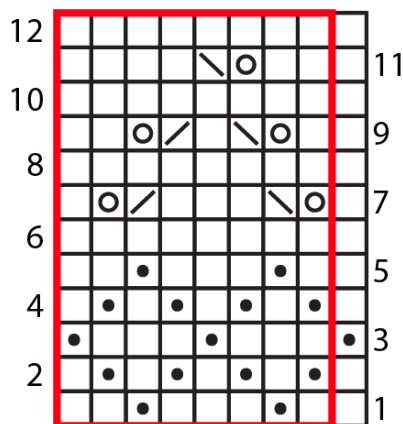
<b>approx</b>	approximately
<b>CC</b>	contrast color
<b>cont</b>	continue
<b>est'd</b>	established
<b>garter st</b>	knit every row
<b>k</b>	knit
<b>k2tog</b>	knit 2 stitches together (1 st dec'd)
<b>LH</b>	left hand
<b>m</b>	marker
<b>MC</b>	main color
<b>meas</b>	measures
<b>ndl</b>	needle
<b>p</b>	purl
<b>patt</b>	pattern
<b>pm</b>	place marker
<b>rep</b>	repeat
<b>RH</b>	right hand
<b>RS</b>	right side
<b>sl</b>	slip
<b>ssk</b>	slip next 2 sts individually knitwise, slip them back to left needle in this position, knit them together through the back loops (1 st dec'd)
<b>ssp</b>	slip next 2 sts individually knitwise, slip them back to left needle in this position, purl them together through the back loops (1 st dec'd)
<b>st(s)</b>	stitch(es)
<b>tbl</b>	through the back loop(s)
<b>WS</b>	wrong side

**yo**

yarn over



### Lace



### Key

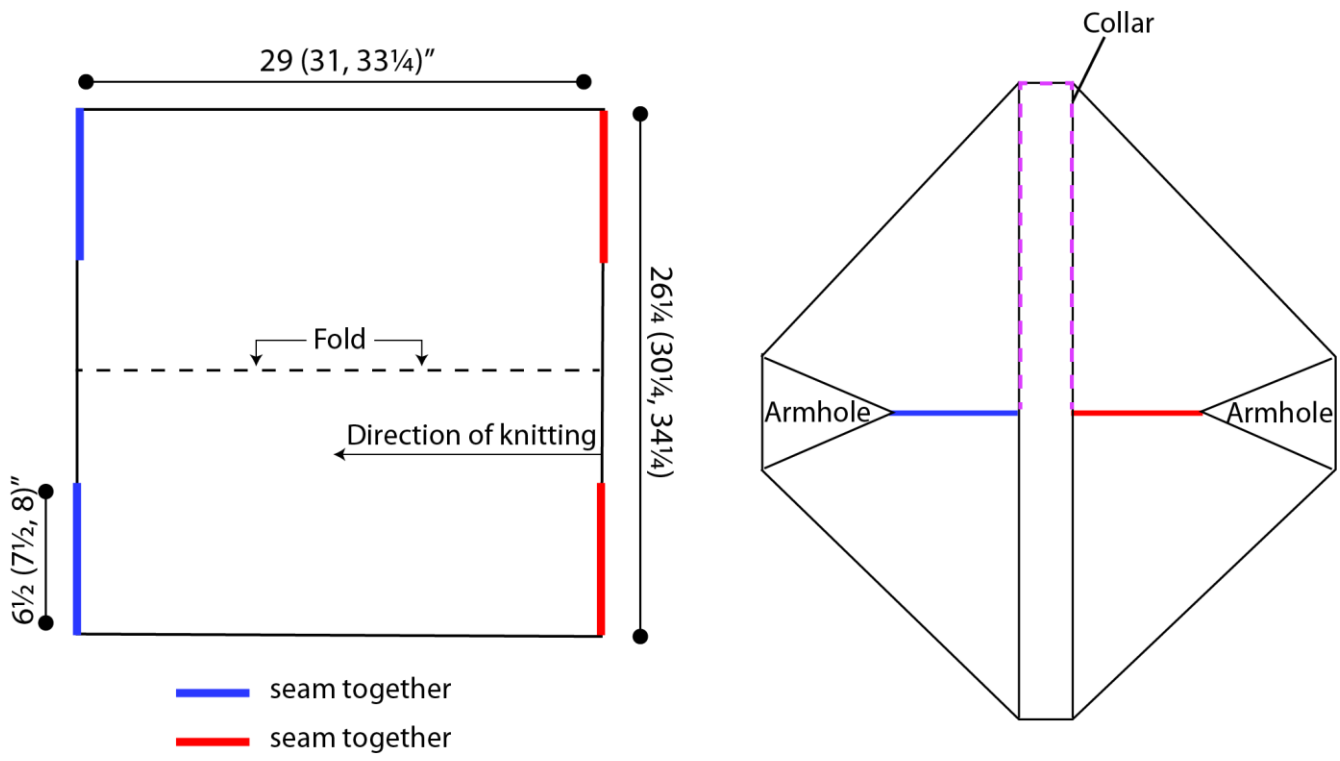
	repeat
	knit
	purl
	ssk
	k2tog
	yo

**Knit, Relax, Smile, Repeat!**

2018 © Universal Yarn, Inc.  
All rights reserved.  
www.universalyarn.com

This pattern may not be reproduced for business, trade or sale.

# Assembly Diagram



**Knit, Relax, Smile, Repeat!**

2018 © Universal Yarn, Inc.  
All rights reserved.  
[www.universalyarn.com](http://www.universalyarn.com)

This pattern may not be reproduced for business, trade or sale.