



Pattern Collection: Women



Roseate Cardigan

Designed by Rachel Brockman

DIFFICULTY

Easy

SIZES

Extra Small (Small, Medium, Large, 1X, 2X, 3X, 4X, 5X)

Shown in Small size with approx. 6" of positive ease around bust.

FINISHED MEASUREMENTS

Bust (with fronts overlapping): 36 (40½, 44½, 48½, 52¾, 57, 61¼, 65¼, 69½)"

Length: 21½ (22¼, 22¾, 23¾, 24¼, 25, 26¼, 26½, 27¼)"

Armhole Circumference: 10¾ (12¼, 13½, 14¼, 15¾, 17, 18½, 19¼, 20½)"

MATERIALS

Universal Yarn Bella Chenille (100% polyester; 100g/131 yds)

- 124 Boysenberry – 4 (5, 5, 6, 6, 7, 7, 8, 9) skeins

Needle: US Size 10 (6 mm) straight and 32" circular or longer (to accommodate large number of sts) *or size needed to obtain gauge*

Notions: Tapestry needle, stitch markers, stitch holder or waste yarn

Knit. Relax. Smile. Repeat!

2020 © Universal Yarn, Inc.

All rights reserved.

www.universalyarn.com

This pattern may not be reproduced for business, trade or sale.

GAUGE

11.5 sts x 19 rows = 4" in Garter Eyelet Stripes

Save time, check your gauge.

PATTERN NOTES

You can't help but smile when you pick up a skein of chenille yarn. The soft, velvety texture just makes you want to snuggle up, and when knit up into something to wear, you'll never want to take it off. The Roseate Cardigan uses our Bella Chenille yarn and a lovely eyelet pattern to create a stylish and yet ultra-cozy outerwear piece that's perfect for everyday wears.

This cardigan is knit flat. The body is knit in one piece and the left front, back, and right front are separated at the underarms. The shoulders are joined with a three-needle bind-off. The sleeves are knit flat and seamed. Finally, stitches are picked up along the front opening to create the neckband.

This sweater is intended to fit with approximately 6" of positive ease with sleeves that are more close-fitting. To determine the best size to make, measure your arm upper arm circumference. Choose a size with a Sleeve measurement that is the closest to this.

STITCH GUIDE

Garter Eyelet Stripe

(multiple of 2 sts, plus 1)

Row 1 (RS): Knit.

Row 2 (WS): Knit.

Rows 3-6: Rep Rows 1-2, 2 times.

Row 7: * K2tog, yo; rep from * to last st, k1.

Row 8: Purl.

Rows 9-12: Rep Rows 7-8, 2 times.

Rep Rows 1-12 for patt.

CARDIGAN

Body

Cast on 95 (107, 119, 131, 143, 155, 167, 179, 191) STS.

Row 1 (RS): K1, work Row 1 of Garter Eyelet Stripe to last st, k1.

Row 2 (WS): P1, work Row 2 of Garter Eyelet Stripe to last st, p1.

Cont as est'd through Row 12 of Garter Eyelet Stripe, then rep Rows 1-12 of patt, 3 more times.

Shape Front

Note 1: Please read through the entire section before proceeding. The Fronts and Back are separated before Front Shaping is complete.

Note 2: Maintain Garter Eyelet Stripe pattern as established throughout Front Shaping and after Separating the Fronts and Back. If on Rows 7-12 of Garter Eyelet Stripe pattern there are not enough stitches to work a decrease with its corresponding increase, work these sts in Stockinette stitch instead.

Set-up Row 1 (RS): Cont as est'd over 23 (26, 29, 32, 35, 38, 41, 44, 47) Right Front sts, pm for side, cont as est'd over 49 (55, 61, 67, 73, 79, 85, 91, 97) Back sts, pm for side, cont as est'd over 23 (26, 29, 32, 35, 38, 41, 44, 47) Left Front sts.

Set-up Row 2 (WS): Cont as est'd to end, sliding markers as you come to them.

Dec Row: K1, k2tog (Right Front dec), cont as est'd to last 3 sts, ssk (Left Front dec), k1 – 2 sts dec'd, 93 (105, 117, 129, 141, 153, 165, 177, 189) sts rem.

Rep Dec Row every 6 (6, 6, 6, 6, 8, 8, 8, 8) rows, 5 (7, 8, 8, 9, 1, 1, 2, 3) more time(s), then rep Dec Row every 4 (4, 0, 4, 0, 6, 6, 6, 6) rows, 3 (1, 0, 1, 0, 8, 9, 8, 7) time(s).

At the same time, when piece meas 16 (16, 16, 16½, 16½, 16½, 17, 17, 17)" from cast-on edge, ending with a WS row, separate Front and Back as follows:

Separate Fronts and Back

Separation Row (RS): Cont as est'd to 1 st bef m, k1, turn work. Place rem Back and Left Front sts on holder or waste yarn.

Knit. Relax. Smile. Repeat!

2020 © Universal Yarn, Inc.

All rights reserved.

www.universalyarn.com

This pattern may not be reproduced for business, trade or sale.

Right Front

Note: Front Shaping continues throughout this section.

Next Row (WS): P1, cont in patt as est'd to last st, p1.

Cont in patt as est'd, keeping the first and last st of each row in Stockinette Stitch, until Front Shaping is complete. After all decreases are complete, a total of 9 (9, 9, 10, 10, 10, 11, 11, 11) Right Front decreases have been completed – 14 (17, 20, 22, 25, 28, 30, 33, 36) sts rem.

Cont even as est'd until piece meas 5½ (6¼, 6¾, 7¼, 7¾, 8½, 9¼, 9½, 10¼)" from Front/Back separation, ending with a WS row. Place sts on holder or waste yarn. Return held Back and Left Front sts to ndl.

Back

Join yarn with RS facing.

Row 1 (RS): K1, cont as est'd to 1 st bef m, k1, turn work. Place Left Front sts on holder or waste yarn.

Row 2 (WS): P1, cont as est'd to last st, p1.

Cont in patt as est'd, keeping the first and last st of each row in Stockinette Stitch, until piece meas 5½ (6¼, 6¾, 7¼, 7¾, 8½, 9¼, 9½, 10¼)" from Front/Back separation, ending with a RS row.

Next Row (WS): Cont as est'd over 14 (17, 20, 22, 25, 28, 30, 33, 36) shoulder sts, bind off center 21 (21, 21, 23, 23, 23, 25, 25, 25) neck sts, cont as est'd over 14 (17, 20, 22, 25, 28, 30, 33, 36) shoulder sts. Place sts on holder or waste yarn. Return Left Front sts to ndl.

Left Front

Note: Front Shaping continues throughout this section.

Join yarn with RS facing.

Next Row (RS): K1, cont as est'd to last st, k1.

Next Row (WS): P1, cont in patt as est'd to last st, p1.

Cont in patt as est'd, keeping the first and last st of each row in Stockinette Stitch, until Front Shaping is complete. After all decreases are complete, a total of 9 (9, 9, 10, 10, 10, 11, 11, 11) Left Front decreases have been completed – 14 (17, 20, 22, 25, 28, 30, 33, 36) sts rem.



Cont even as est'd until piece meas 5½ (6¼, 6¾, 7¼, 7¾, 8½, 9¼, 9½, 10¼)" from Front/Back separation, ending with a WS row. Place sts on holder or waste yarn.

SLEEVES

Cast on 23 (25, 25, 27, 27, 27, 29, 29, 29) sts.

Row 1 (RS): Knit.

Row 2 (WS): P1, knit to last st, p1.

Cont as est'd until piece meas 1½" from cast-on edge, ending with a WS row.

Shape Sleeve

Note: Maintain increased stitches in garter st.

Inc Row (RS): K1, m1R, knit to last st, m1L, k1 – 2 sts inc'd, 25 (27, 27, 29, 29, 29, 31, 31, 31) sts.

Rep Inc Row every 14 (12, 8, 8, 6, 4, 4, 4, 4) rows, 0 (3, 3, 3, 4, 1, 4, 7, 13) more time(s), then rep Inc Row every 16 (14, 10, 10, 8, 6, 6, 6, 6) rows, 3 (1, 3, 3, 4, 9, 7, 5, 1) more time(s) – 6 (8, 12, 12, 16, 20, 22, 24, 28) sts inc'd, 31 (35, 39, 41, 45, 49, 53, 55, 59) sts.

Knit. Relax. Smile. Repeat!

2020 © Universal Yarn, Inc.

All rights reserved.

www.universalyarn.com

This pattern may not be reproduced for business, trade or sale.

Work even as est'd until piece meas 15" from cast-on edge, ending with a WS row.

Eyelet Section

Row 1 (RS): K1, * k2tog, yo; rep from * to last 2 sts, k2.

Row 2 (WS): Purl.

Rep Rows 1-2 until piece meas 18" from cast-on edge, ending with a WS row. Bind off all sts.

FINISHING

Gently wash and block pieces to finished measurements. Weave in ends. With RS facing together, join Left Front and Left Back shoulder sts using the three-needle bind-off. Rep for Right Front and Right Back should sts. Sew sleeves to body. Sew Sleeve seams.

Neckband

With RS facing, beg at lower Right Front, pick up and knit 63 (66, 67, 69, 71, 73, 77, 78, 80) sts evenly along Right Front, 21 (21, 21, 23, 23, 23, 25, 25, 25) sts along Back Neck, and 63 (66, 67, 69, 71, 73, 77, 78, 80) sts along Left Front – 147 (153, 155, 161, 165, 169, 179, 181, 185) sts.

Row 1 (RS): Knit.

Row 2 (WS): Knit.

Rep Rows 1-2 until piece meas 2" from picked-up edge, ending with a WS row. Bind off all sts.

Weave in rem ends.

Abbreviations

approx	approximately
bef	before
circ	circular
cont	continue
dec('d)	decrease(d)
est'd	established
garter st	knit every row
inc('d)	increase(d)
k	knit
k2tog	knit 2 stitches together (1 st dec'd)
kwise	knitwise
m	marker
m1L	insert left needle from front to back under horizontal strand of yarn lying between st just worked and next st, knit or purl

m1R

this st through the back loop (1 st inc'd)

insert left needle from back to front under horizontal strand of yarn lying between st just worked and next st, knit or purl this st through the front loop (1 st inc'd)

meas

measures

ndl

needle

p

purl

patt

pattern

pm

place marker

rem

remain(ing)

rep

repeat

RS

right side

sl

slip

ssk

slip next 2 sts individually knitwise, slip them back to left needle in this position, knit them together through the back loops (1 st dec'd)

St st

Stockinette stitch (knit on RS rows, purl on WS rows; in the rnd, knit every rnd)

st(s)

stitch(es)

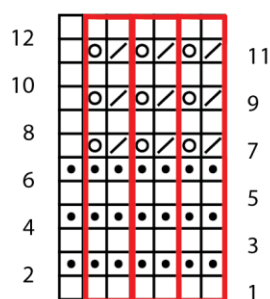
WS

wrong side

yo

yarn over

Garter Eyelet Stripe



Key

- pattern repeat
- knit on RS, purl on WS
- purl on RS, knit on WS
- / k2tog
- o yo

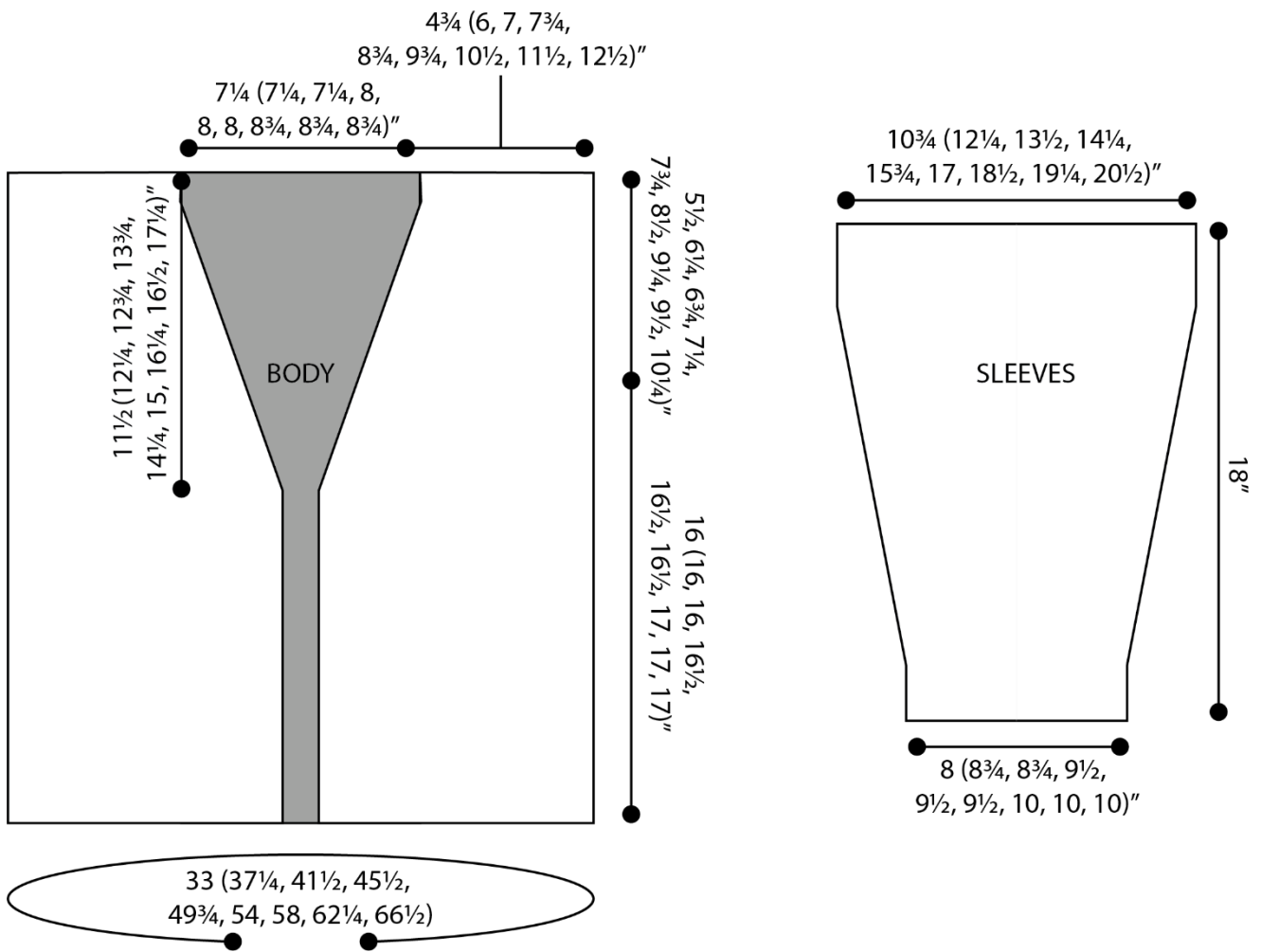
Knit. Relax. Smile. Repeat!

2020 © Universal Yarn, Inc.

All rights reserved.

www.universalyarn.com

This pattern may not be reproduced for business, trade or sale.



Knit. Relax. Smile. Repeat!

2020 © Universal Yarn, Inc.

All rights reserved.

www.universalyarn.com

This pattern may not be reproduced for business, trade or sale.