



## Pattern Collection: Accessories



### Rose Quartz Cowl

Designed by Universal Yarn Design Team

#### SIZES

One Size

#### FINISHED MEASUREMENTS

**Width:** 7" (14" total circumference)

**Circumference:** 66"

#### MATERIALS

**Fibra Natura Kingston Tweed** (50% wool, 25% alpaca, 25% mixed fiber; 50g/194 yds)

- 111 Shale (MC) – 3 skeins
- 103 Gypsum (CC1) – 1 skein
- 104 Jasper (CC2) – 1 skein

**Needles:** US Size 6 (4 mm) set of DPNs or your preferred method for knitting small circumferences in the round *or size needed to obtain gauge*

**Notions:** Tapestry needle, stitch markers; for seamless version: a crochet hook size G-6 (4 mm), waste yarn, and spare set of DPNs or your preferred method for knitting small circumferences in the round circular needle

#### GAUGE

23 sts x 22 rounds = 4" in Stranded Pattern

**Save time check your gauge.**

*Knit. Relax. Smile. Repeat!*

2019 © Universal Yarn, Inc.

All rights reserved.

[www.universalyarn.com](http://www.universalyarn.com)

This pattern may not be reproduced for business, trade or sale.

## PATTERN NOTES

The Rose Quartz Cowl is a gorgeous knit in Kingston Tweed, and the colorwork diamond pattern is sure to jazz up any outfit, while still being a very wearable accessory in your wardrobe.

This cowl is knit as a tube in the round. You can finish by simply sewing the tube together or use Kitchener stitch to graft each end together for an invisible seam. Should you choose to use the Kitchener method, we recommend using a crochet provisional cast-on. When working in the stranded pattern, you may wish to place stitch markers between each repeat to stay on track.

For questions about this pattern, please contact [patterns@universalyarn.com](mailto:patterns@universalyarn.com).

### Crochet Provisional Cast-on

With waste yarn and crochet hook, make a ch approximately 10 chs longer than the number of sts to be cast on. With working yarn and knitting needle, pick up and knit sts through the bottom bump of each ch.

## COWL

*Note: Change colors as indicated in Stranded Pattern chart.*

With MC, cast on 80 sts. PM and join to knit in the rnd, being careful not to twist sts.

**Set-up Rnds 1-2:** With MC, knit.

**Rnd 1:** Work Rnd 1 of Stranded Pattern to end. Patt will be repeated 8 times across each rnd.

**Rnd 2:** Work Rnd 2 of Stranded Pattern to end. Cont as est'd through Rnd 16 of patt, then rep Rnds 1-16 of patt 21 more times, then rep Rnds 1-8 of patt 1 more time.

**Next Rnd:** With MC, knit to end.

## FINISHING

**Seamed Version:** With MC, bind off all sts. Using MC, sew each end of the tube tog, taking care not to twist the tube. Weave in rem ends.

**Seamless Version:** Carefully unravel the waste yarn from the cast-on edge and place live sts

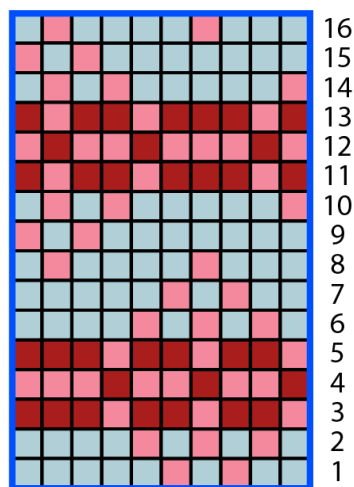
onto a spare ndl. Bring both ends of the tube parallel to one another, taking care not to twist the tube. With RS facing and MC, graft the 2 sets of sts tog using Kitchener stitch. Take care to ensure the WS's of each end are facing inward when grafting. Weave in rem ends.

Gently block to finished measurements.

## Abbreviations

<b>ch(s)</b>	chain(s)
<b>CC</b>	contrast color
<b>est('d)</b>	establish(ed)
<b>k</b>	knit
<b>ndl</b>	needle
<b>p</b>	purl
<b>patt</b>	pattern
<b>pm</b>	place marker
<b>rnd(s)</b>	round(s)
<b>RS</b>	right side
<b>st(s)</b>	stitches
<b>tog</b>	together
<b>WS</b>	wrong side

## Stranded Pattern



## Key

	pattern repeat
	MC
	CC1
	CC2

*Knit. Relax. Smile. Repeat!*

2019 © Universal Yarn, Inc.

All rights reserved.

[www.universalyarn.com](http://www.universalyarn.com)

This pattern may not be reproduced for business, trade or sale.