



Pattern Collection: Accessories



Rivulet Scarf

Designed by Universal Design Team

SIZES

One

FINISHED MEASUREMENTS

Width: 6"

Length: 66"

MATERIALS

Universal Yarn *Universe* (42% linen, 41% cotton, 9% glitter, 8% polyamide; 50g/246 yds)

- 10-02 Cotton (A) – 2 skeins
- 10-05 Wood (B) – 2 skeins
- 10-10 Tin (C) – 2 skeins

Hook: US Size D-3 (3.25 mm) *or size needed to obtain gauge*

Notions: Tapestry needle

GAUGE

4 reps of Rivulet patt = 4½" wide

Save time, check your gauge.

Knit. Relax. Smile. Repeat!

2017 © Universal Yarn, Inc.

All rights reserved.

www.universalyarn.com

This pattern may not be reproduced for business, trade or sale.

PATTERN NOTES

This textural scarf is worked in two halves from the center out.

STITCH GUIDE

Rivulets

(begins with multiples of 10 chs + 2)

Row 1 (WS): Sc in second ch from hk, * sk next 4 chs, [5 dc, ch 1, 5 dc] in next ch, sk next 4 chs, sc in next ch; rep from * to end, turn.

Row 2 (RS): Ch 1, * sc in sc, fpssc in next 5 dc, ch 1, fpssc in next 5 dc; rep from * to last sc, sc in last sc, turn.

Row 3: Ch 4 (counts as dc + ch 1), dc in same sc, ch 3, sk next 5 fpssc, * sc in ch-1 sp, ch 3, sk next 5 fpssc, [dc, ch 2, dc] in next sc, ch 3, sk next 5 fpssc; rep from * to last ch-1 sp, sc in ch-1 sp, ch 3, sk next 5 fpssc, [dc, ch 1, dc] in last sc, turn.

Row 4: Ch 1, sc in same dc, ch 1, sc in next dc, ch 3, sc in next sc, * ch 3, sc in next dc, ch 2, sc in next dc, ch 3, sc in next sc; rep from * to last ch-3 sp, ch 3, sc in next dc, ch 1, sc in last dc, turn.

Row 5: Ch 4 (counts as dc + ch 1), 5 dc in ch-1 sp from 2 rows below * sk next sc, sc in next ch-1 sp from 4 rows below, * [5 dc, ch 1, 5 dc] in next ch-2 sp from 2 rows below; rep from * to last sc, 5 dc in ch-1 sp from 2 rows below, ch 1, dc in last sc, turn.

Row 6: Ch 1, sc in same dc, ch 1, fpssc in next 5 dc, * sc in next sc, fpssc in next 5 dc, ch 1, fpssc in next 5 dc; rep from * to last sc, sc in next sc, fpssc in next 5 dc, ch 1, sc in last dc, turn.

Row 7: Ch 1, sc in same sc, ch 3, sk next 5 fpssc, [dc, ch 2, dc] in next sc, ch 3, sk next 5 fpssc, * sc in next ch-1 sp, ch 3, sk next 5 fpssc, [dc, ch 2, dc] in next sc, ch 3, sk next 5 fpssc; rep from * to last sc, sc in last sc, turn.

Row 8: Ch 1, sc in same sc, * ch 3, sc in next dc, ch 2, sc in next dc, ch 3, sc in next sc; rep from * to end.

Row 9: Ch 1, sc in same sc, * [fdc, ch 1, 5dc] in ch-2 sp from 2 rows below, sc in next ch-1 sp from 4 rows below; rep from *, ending sc in last sc, turn.

Row 10: Ch 1, * sc in next sc, fpssc in next 5 dc, ch 1, fpssc in next 5 dc; rep from * to last sc, sc in last sc, turn.

Rep Rows 3-10 for patt.

SCARF

First Half

With A, ch 52. Work Rows 1-3 of Rivulets patt.

With C, work Rows 4-7 of patt.

With B, work Rows 8-10, and Row 3 of patt.

Cont in patt, alternating colors every 4 rows as est'd, cont to rep Rows 3-10 of patt. When piece meas 33", end with Row 6 or 10 of patt, fasten off.

Second Half

With C, work Row 1 of Rivulet patt into beg ch from First Half. With C, work Rows 2-3 of Rivulet patt.

With B, work Rows 4-7 of patt.

With A, work Rows 8-10, and Row 3 of patt.

Cont in patt, alternating colors every 4 rows as est'd, cont to rep Rows 3-10 of patt. When piece meas 33", end with Row 6 or 10 of patt, fasten off.

FINISHING

Weave in ends and block.

Abbreviations

ch	chain
cont	continue
dc	double crochet
est'd	established
fp	front post
hk	hook
meas	measures
patt	pattern
rep	repeat
RS	right side
sc	single crochet
sk	skip
sp	space(s)
st(s)	stitch(es)
WS	wrong side

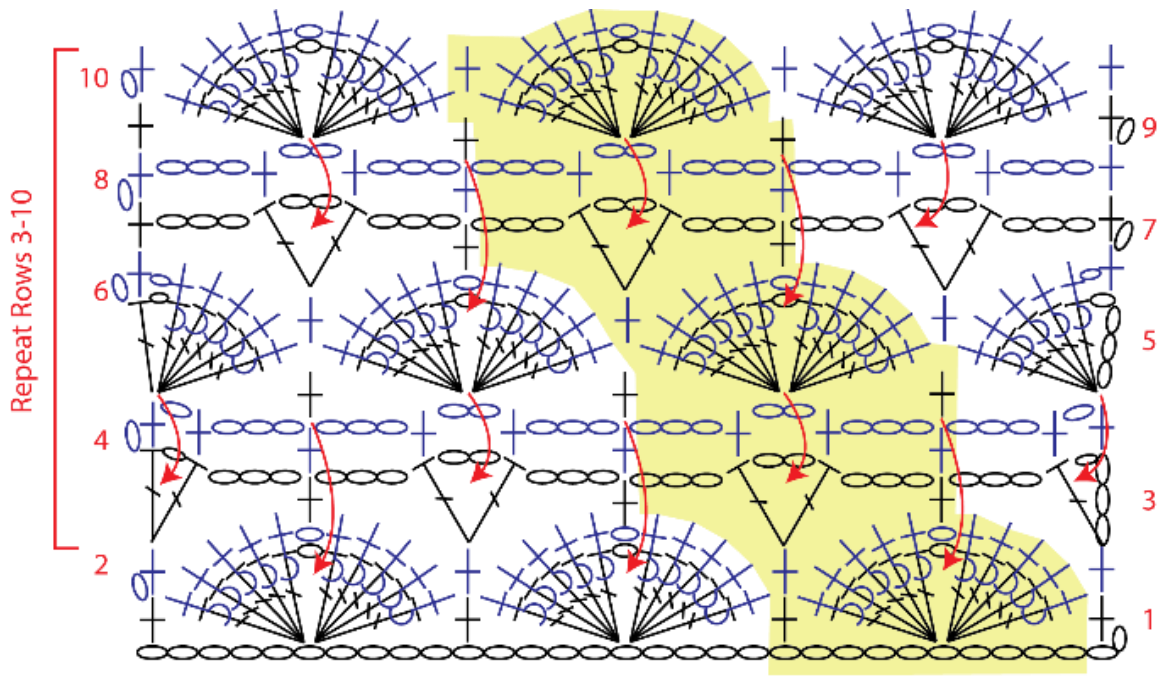
Knit. Relax. Smile. Repeat!

2017 © Universal Yarn, Inc.

All rights reserved.

www.universalyarn.com

This pattern may not be reproduced for business, trade or sale.



Key

- ch
- † sc
- ┆ dc
- ⌋ front post

Knit. Relax. Smile. Repeat!

2017 © Universal Yarn, Inc.

All rights reserved.

www.universalyarn.com

This pattern may not be reproduced for business, trade or sale.