



Pattern Collection: Accessories



Rime Scarf

Designed by Amy Gunderson

FINISHED MEASUREMENTS

Width: 23"

Length: 64"

MATERIALS

Fibra Natura Whisper Lace (70% superwash wool, 30% silk; 440 yds/50g)

- 116 Dove Gray – 3 balls

Needle: US Size 4 (3.5 mm) straight *or* size needed to obtain gauge

Notions: Tapestry needle, stitch marker, blocking wires

GAUGE

22 sts x 27 rows = 4" in stockinette stitch

Save time, check your gauge.

Knit, Relax, Smile, Repeat!

2017 © Universal Yarn, Inc.

All rights reserved.

www.universalyarn.com

This pattern may not be reproduced for business, trade or sale.

PATTERN NOTES

This lightweight scarf is worked from one end to the other. Be sure to steam or wet block using blocking wires to fully open up the stitches.

STITCH GUIDE

Lace Panel

(worked over 40 sts)

Row 1: [K2, p1, yo, ssk, p1] 2 times, k2, p2, k3, k2tog, k1, yo, p2, yo, k1, ssk, k3, p2, k2, p1, yo, ssk, p1, k2.

WS Rows 2-8: P8, [k2, p6] 2 times, k2, p14.

Row 3: [K2, p1, k2tog, yo, p1] 2 times, k2, p2, k2, k2tog, k1, yo, k1, p2, k1, yo, k1, ssk, k2, p2, k2, p1, k2tog, yo, p1, k2.

Row 5: [K2, p1, yo, ssk, p1] 2 times, k2, p2, k1, k2tog, k1, yo, k2, p2, k2, yo, k1, ssk, k1, p2, k2, p1, yo, ssk, p1, k2.

Row 7: [K2, p1, k2tog, yo, p1] 2 times, k2, p2, k2tog, k1, yo, k3, p2, k3, yo, k1, ssk, p2, k2, p1, k2tog, yo, p1, k2.

Rep Rows 1-8 for patt.

SCARF

Cast on 126 sts.

Set-up row (WS): P1, work Row 8 of Lace Panel over 40 sts, pm, purl to end.

Row 1 (RS): Sl 1 pwise wyib, knit to m, work Row 1 of Lace Panel to last st, sl 1 pwise wyib.

Row 2 (WS): P1, work Row 2 of Lace Panel to m, purl to end.

Cont in patt as est'd until piece meas 64" from cast-on edge, ending with WS row 8 of patt. Bind off all sts loosely.

FINISHING

Weave in ends but do not trim. Run blocking wires through all 4 sides of scarf. Pull taut, pin to blocking board. Wet or steam block. Trim ends when fully dry.

Abbreviations

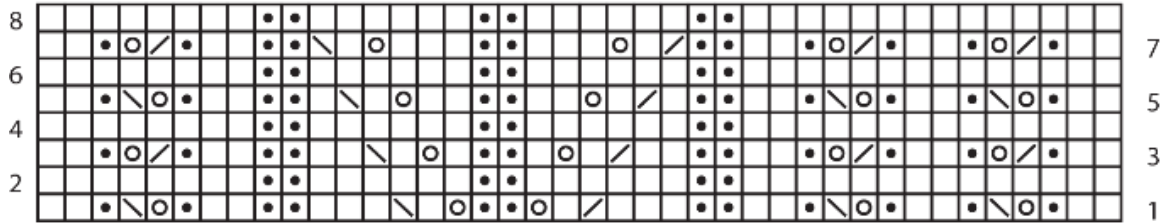
cont	continue
dec('d)	decrease(d)
est'd	established
inc('d)	increase(d)
k	knit
k2tog	knit 2 stitches together (1 st dec'd)
m	marker
meas	measures
ndl	needle
patt	pattern
p	purl
pm	place marker
pwise	purlwise
RS	right side
sl	slip
ssk	slip next 2 sts individually knitwise, slip them back to left needle in this position, knit them together through the back loops (1 st dec'd)
st(s)	stitch(es)
St st	Stockinette stitch (knit on RS rows, purl on WS rows; in the rnd, knit every rnd)
tog	together
WS	wrong side
wyib	with yarn in back
yo	yarn over

Knit, Relax, Smile, Repeat!

2017 © Universal Yarn, Inc.
All rights reserved.
www.universalyarn.com

This pattern may not be reproduced for business, trade or sale.

Lace Panel



Key

- knit on RS, purl on WS
- purl on RS, knit on WS
- yo
- ssk
- k2tog

Knit, Relax, Smile, Repeat!

2017 © Universal Yarn, Inc.
All rights reserved.
www.universalyarn.com

This pattern may not be reproduced for business, trade or sale.