



QUICK COWLS

5 Bulky Weight Cowls to Knit & Crochet Using Universal Yarn
Great for Gifts!



GET TO THE POINT COWL

FINISHED MEASUREMENTS

Neck Circumference: 24"

Depth: 10"

MATERIALS

Universal Yarn *Classic Shades Frenzy*
(70% acrylic, 30% wool; 100g/158 yds)

- 907 Urban Transit – 1 ball

Needles: US Size 11 (8 mm) 16" circular needle or size needed to obtain gauge

Notions: Tapestry needle, stitch marker

GAUGE

12 sts x 18 rows = 4" in St st

Save time, check your gauge.

PATTERN NOTES

This Cowl is worked from the bottom up in one piece.

COWL

Cast on 120 sts. PM and join to work in the rnd.

Pointy Section

Rnd 1: Purl.

Rnd 2: * K17, sl2-k1-p2sso; rep from * to end – 108 sts rem.

Rnd 3: * P17, k1; rep from * to end.

Rnd 4: K16, sl 2-k1-p2sso, * k15, sl 2-k1-p2sso; rep from *, end k15, sl 2-k1 (1st st from prev rnd)-p2sso – 96 sts rem.

Rnd 5: Knit.

Rnd 6: K14, sl 2-k1-p2sso, * k13, sl 2-k1-p2sso; rep from *, end k13, sl 2-k1 (1st st from prev rnd)-p2sso – 84 sts rem.

Rnd 7: * P13, k1; rep from * to end.

Rnd 8: K12, sl 2-k1-p2sso, * k11, sl 2-k1-p2sso; rep from *, end k11, sl 2-k1 (1st st from prev rnd)-p2sso – 72 sts rem.

Rnd 9: Knit.

Neck

Rnd 1: * P11, k1; rep from * to end. Rep this Rnd until Neck section meas 8".

Next rnd: Purl.

Next rnd: Knit.

Rep these 2 rnds, 1 more time. Bind off all sts pwis.

FINISHING



Weave in ends.

Wear as a Cowl
or a Capelet!



ETHEREAL LACE COWL

FINISHED MEASUREMENTS

Width: 8"

Length/Circumference: 44"

MATERIALS

Universal Yarn Mohair Mountain
(67% acrylic, 9% mohair, 10% polyester, 14% wool; 200g/660 yds)

- 2001 Moulin Rouge – 1 ball
(one ball makes 5 cowls!)

Needles: US Size 11 (8 mm) straight *or* size needed to obtain gauge

Notions: Tapestry needle, cable needle (cn)

GAUGE

12 sts x 14 rows = 4" in Cables and Lace Pattern

Save time, check your gauge.

STITCH GUIDE

3x3 Right Cross (RC): Slip next 3 sts to cn and hold in back, k3 from left ndl, k3 from cn.

Cables and Lace

(worked over 24 sts)

Rows 1, 3, & 7 (RS): P2, k6, p1, k1, yo, ssk, k2tog, yo, k1, p1, k6, p2.

WS Rows 2-16: K2, p6, k1, p6, k1, p6, k2.

Row 5 (RS): P2, 3x3 RC, p1, k1, yo, ssk, k2tog, yo, k1, p1, 3x3 RC, p2.

Rows 9, 11, & 15: P2, k1, yo, ssk, k2tog, yo, k1, p1, k6, p1, k1, yo, ssk, k2tog, yo, k1, p2.

Row 13: P2, k1, yo, ssk, k2tog, yo, k1, p1, 3x3 RC, p1, k1, yo, ssk, k2tog, yo, k1, p2.

Rep Rows 1-16 for patt.

COWL

Cast on 24 sts. Beginning with Row 1, work in Cables and Lace Pattern until Cowl meas 44", ending with Row 8 or 16 of patt. Bind off all sts.



FINISHING

Sew cast-on edge to bind-off edge.
Wear around neck wrapped once or twice.

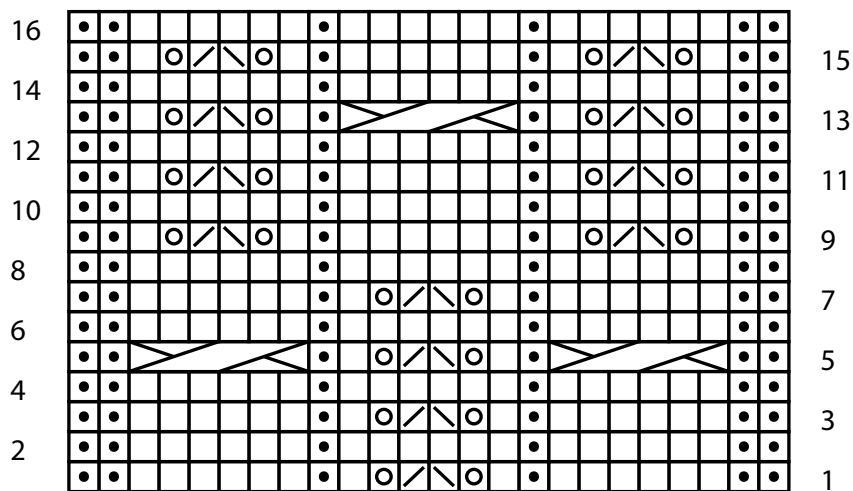


▲
Wear this cowl as a single loop at the office or indoors.

ETHEREAL LACE COWL

Continued

Cables and Lace (worked over 24 sts)



Key

□ knit on RS, purl on WS

◼ purl on RS, knit on WS

○ yo

◻ ssk

◻ k2tog

◻ 3x3 RC

Wrap twice around your neck when going outdoors to beat the cold!



HAIRPIN COWL

FINISHED MEASUREMENTS

Width: 7"

Length/Circumference: 45"

MATERIALS

Universal Yarn *Bamboo Bloom*

Handpaints (48% rayon from bamboo, 44% wool, 8% acrylic; 100g/154 yds)

- 312 Kabuki (MC) – 1 skein

Universal Yarn *Deluxe Chunky* (100% wool; 100g/120 yds)

- 13209 Stone (CC) – 1 skein

Hook: US Size K-10½ (6.5 mm) or size needed to obtain gauge

US Size H-8 (5 mm)

Notions: Adjustable Hairpin Lace Loom, tapestry needle, waste yarn

GAUGE

11 sc x 12 rows = 4" using CC and larger hook

Save time, check your gauge.

COWL

Hairpin Lace Strip A

Set Hairpin Lace Loom to 2½" width. Make a strip using MC and smaller hook, with 120 loops on each side of the strip. Fasten off last st. Slip each side of loops to a separate piece of waste yarn.

Hairpin Lace Strip B

Set Hairpin Lace Loom to 1¼" width. Make a strip using MC and smaller hook, with 120 loops on each side of the strip. Fasten off last st. Slip each side of loops to a separate piece of waste yarn.

FINISHING

Strip A Edging

With CC and larger hook, join yarn to the end loop of one side of Strip A.

Rnd 1: Ch 1, work 2 hdc in same loop, hdc in each loop to corner, work 3 hdc in corner loop, work 4 hdc along side edge of strip, 3 hdc in corner loop, 1 hdc in each loop to corner, work 3 hdc

in corner loop, work 4 hdc along side edge of strip, work 1 hdc in same loop as first hdc, join with sl st to beg hdc. Fasten off.

Strip B Edging

With CC and larger hook, join yarn to the end loop of one side of Strip A.

Work Rnd 1 as for Strip A Edging, do not fasten off.

Join Strips

Lay Strip A next to Strip B so they are parallel. Using yarn attached to Strip B, * insert hook through back loop of next hdc on Strip B, insert hook through corresponding hdc on Strip A, sl st; rep from * along entire long edge. Fasten off.



Join Ends of Strip

Bring ends of Strip together. Attach CC to corner hdc of one end. Join ends together by working sl st through back loops of sts, as for Joining Strips.

Final Edging

Attach yarn to End seam. Work sl st into each hdc around entire perimeter of cowl, join with beginning sl st. Fasten off. Rep for other edge.

Weave in all ends. Steam block.



Check out a close-up of the slip-stitch join on the last page of this e-book!



EVERYONE LIKES STRIPES COWL

FINISHED MEASUREMENTS

10" x 45"

MATERIALS

Universal Yarn Deluxe Chunky (100% wool; 100g/120 yds)

- 3705 Sweet Pollen (A) – 1 skein
- 50002 Millet (B) – 1 skein
- 22299 Chocolate (C) – 1 skein

Needles: US Size 11 (8 mm) *or size needed to obtain gauge*

Notions: Tapestry needle, crochet hook similar to needle size, waste yarn

GAUGE

12 sts x 16 rows = 4" in St st

Save time, check your gauge.

PATTERN NOTES

The gauge for this yarn may seem a little loose, but it will help the cowl to drape. Be sure not to knit too tightly.

Carry unused color loosely up the side of the work during the striped sections. Because this cowl is worked in stockinette stitch it will naturally curl, hiding these small bits of carried yarn.

COWL

Provisional Cast On

With crochet hook and waste yarn, chain 40. With Color A, beg a few chains from one end, pick up and knit 30 sts through back bumps of crochet chain. With A, purl 1 row.

Striped Section 1

Row 1 (RS): With B, knit.

Row 2: With B, purl.

Row 3: With A, knit.

Row 4: With A, purl.

Rep Rows 1-4 until Striped Section measures 15", ending with Row 4.

Break B.

Striped Section 2

Row 1 (RS): With C, knit.

Row 2: With C, purl.

Row 3: With A, knit.

Row 4: With A, purl.

Rep Rows 1-4 until Striped Section 2 measures 15", ending with Row 4. Break A.

Striped Section 3

Row 1 (RS): With C, knit.

Row 2: With C, purl.

Row 3: With B, knit.

Row 4: With B, purl.

Rep Rows 1-4 until Striped Section 3 measures 15", ending with Row 3. Break C.



EVERYONE LIKES STRIPES COWL

Continued

Carefully unravel provisional cast-on, placing live sts on a spare needle. Graft cast-on together with live sts on needle using Kitchener stitch and B.

FINISHING

Weave in ends and block.



This cowl is so versatile!
Try styling it in different
ways!



LAVA FLOW COWL

FINISHED MEASUREMENTS

Width: 7"

Length/Circumference: 22"

MATERIALS

Universal Yarn *Superwool* (49% wool, 48% acrylic, 3% nylon; 100g/66 yds)

- Spicy Red – 1 skein

Needles: US Size 17 (12.75 mm)

straight or size needed to obtain gauge

Notions: Cable needle (cn), tapestry needle

GAUGE

8 sts x 13 rows = 4" in St st

Save time, check your gauge.

STITCH GUIDE

3x3 Right Cross (RC): Slip next 3 sts to cn and hold in back, k3 from left ndl, k3 from cn.

3x3 Left Cross (LC): Slip next 3 sts to cn and hold in front, k3 from left ndl, k3 from cn.

COWL

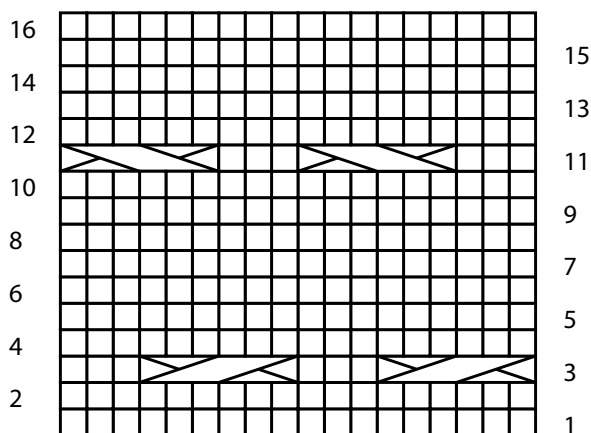
Cast on 18 sts. Work Rows 1-16 of Lava Cable chart, 4 times. Bind off all sts.

FINISHING



Sew cast-on and bind-off edges together. Weave in ends.



Lava Cable



Key

- knit on RS, purl on WS
-  3x3 RC
-  3x3 LC

ABBREVIATIONS

CC	contrast color
cn	cable needle
hdc	half double crochet
k	knit
k2tog	knit 2 stitches together
(1 st dec'd)	
MC	main color
meas	measures
ndl	needle
p	purl
pwise	purlwise
pm	place marker
prev	previous
rem	remain(ing)
rep	repeat
rnd	round
RS	right side
sl 2-k1-p2sso	slip 2 stitches knitwise, knit the next stitch, pass the 2 slipped stitches over the knit titch – 2 sts dec'd
sl st	slip stitch
ssk	slip next 2 sts individually knitwise, slip them back to left needle in this position, knit them together through the back loops (1 st dec'd)
st(s)	stitch(es)
St st	Stockinette stitch (knit on RS rows, purl on WS rows; in the rnd, knit every rnd)
WS	wrong side
yo	yarn over

DISTRIBUTION

US
 Universal Yarn
 5991 Caldwell Park Drive
 Harrisburg, NC 28075
 Tel: 877.864.9276
 Fax: 704.454.1559
 e-mail: patterns@universalyarn.com
www.universalyarn.com

CANADA
 Diamond Yarn
 155 Martin Ross Ave Unit 3
 Toronto (Ont.) M3J2L9
 Tel: 800.268.1896
 Fax: 416.736.6112
www.diamondayarn.com

MEXICO
 Rebecca Pick Estambres
 Lago Chalco No. 129 Col Anahuac
 C.P. 1320 Mexico, D.F.
 Tel: 52.5341.4413
 Fax: 52.5341.6019
www.rebeccapickestambres.com

TURKEY
 Defne
 Yeni Yalova Yolu Buttım Plaza
 Kat: 19 No: 1663/Bursa
 Tel: 90.224.221.0750
 Fax: 90.224.211.0753
 e-mail: info@defneiplikpazarlama.com

ACKNOWLEDGEMENTS

Creative Lead

Amy Gunderson

Designers

Universal Yarn Design Team

Proofreader

Heather Hill

Photographer

Heather Hill



UNIVERSAL YARN