



Pattern Collection: Accessories



Porthole Cowl

Designed by Universal Yarn Design Team

SIZE

One Size

FINISHED MEASUREMENTS

Circumference: 41"

Height: 12"

MATERIALS

Universal Yarn Major (100% acrylic;
200g/328 yds)

- 118 Silver Blush – 1 skein

Needles: US Size 10 (6 mm) 32" circular
or size needed to obtain gauge

Notions: Stitch marker, tapestry needle

GAUGE

15 sts x 19 rows = 4" in Portholes patt.

Save time, check your gauge.

Knit. Relax. Smile. Repeat!

2018 © Universal Yarn, Inc.

All rights reserved.

www.universalyarn.com

This pattern may not be reproduced for business, trade or sale.

PATTERN NOTES

The Porthole Cowl is knit bottom-up in the round. This cowl looks beautiful in self-shading Major. You can wrap it around your shoulders or keep it loose around your neck—either way, you're sure to feel cozy.

Slip all stitches purlwise.

STITCH GUIDE

K2, P2 Rib

Rnd 1: * K2, p2; rep from * to end.

Rep Rnd 1 for patt.

Portholes

(multiple of 8 sts)

Rnd 1: Purl to end.

Rnd 2: * Sl 1 wyif, k6, sl 1 wyif; rep from * to end.

Rnd 3: * Sl 1 wyif, k1, k2tog, [yo] 2 times, ssk, k1, sl 1 wyif; rep from * to end.

Rnd 4: * Sl 1 wyif, k2, [k1, p1] into double yo, k2, sl 1 wyif; rep from * to end.

Rnd 5: * Sl 1 wyif, k6, sl 1 wyif; rep from * to end.

Rnds 6-7: Purl to end.

Rnd 8: K3, sl 1 wyif, * sl 1 wyif, k6, sl 1 wyif; rep from * to last 4 sts, sl 1 wyif, k3.

Rnd 9: Yo, ssk, k1, sl 1 wyif, * sl 1 wyif, k1, k2tog, [yo] 2 times, ssk, k1, sl 1 wyif; rep from * to last 4 sts, sl 1 wyif, k1, k2tog, yo.

Rnd 10: P1, k2, sl 1 wyif, * sl 1 wyif, k2, [k1, p1] into double yo, k2, sl 1 wyif; rep from * to last 4 sts, sl 1 wyif, k3.

Rnd 11: K3, sl 1 wyif, * sl 1 wyif, k6, sl 1 wyif; rep from * to last 4 sts, sl 1 wyif, k3.

Rnd 12: Purl to end.

Rep Rnds 1-12 for patt.

COWL

Cast on 152 sts. Pm and join in the rnd, being careful not to twist sts.

Bottom Hem

Work in K2, P2 Rib for 4 rnds.

Portholes Sections

Work Rnds 1-12 of Portholes patt 6 times. Patt will be rep 19 times across each rnd.

Top Hem

Work in K2, P2 Rib for 4 rnds. Bind off all sts in patt.

FINISHING

Block to measurements and weave in ends.

Abbreviations

circ	circular
k	knit
k2tog	knit 2 stitches together (1 st dec'd)
m	marker
p	purl
patt	pattern
pm	place marker
rep	repeat (ed)
rnd	round
sl	slip
ssk	slip next 2 sts individually knitwise, slip them back to left needle in this position, knit them together through the back loops (1 st dec'd)
st(s)	stitch(es)
wyif	with yarn held in front
yo	yarn over



Knit. Relax. Smile. Repeat!

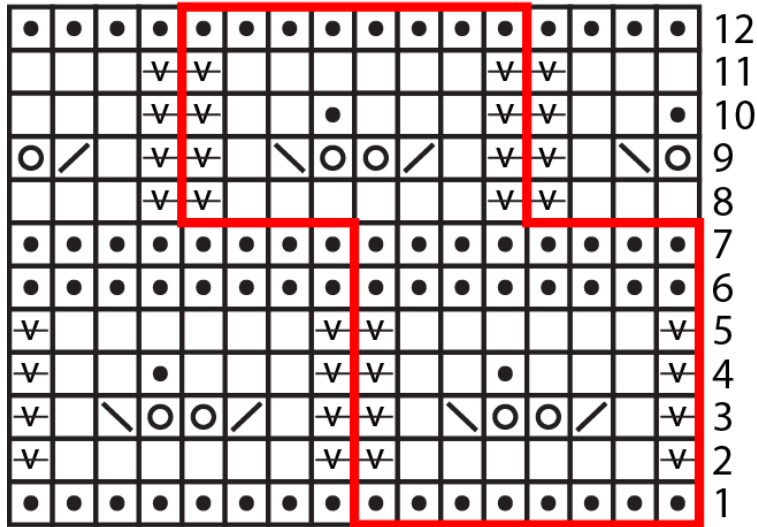
2018 © Universal Yarn, Inc.

All rights reserved.

www.universalyarn.com

This pattern may not be reproduced for business, trade or sale.

Portholes



Key

- knit
- purl
- yo
- ssk
- k2tog
- sl 1 wyif
- repeat

Knit. Relax. Smile. Repeat!

2018 © Universal Yarn, Inc.

All rights reserved.

www.universalyarn.com

This pattern may not be reproduced for business, trade or sale.