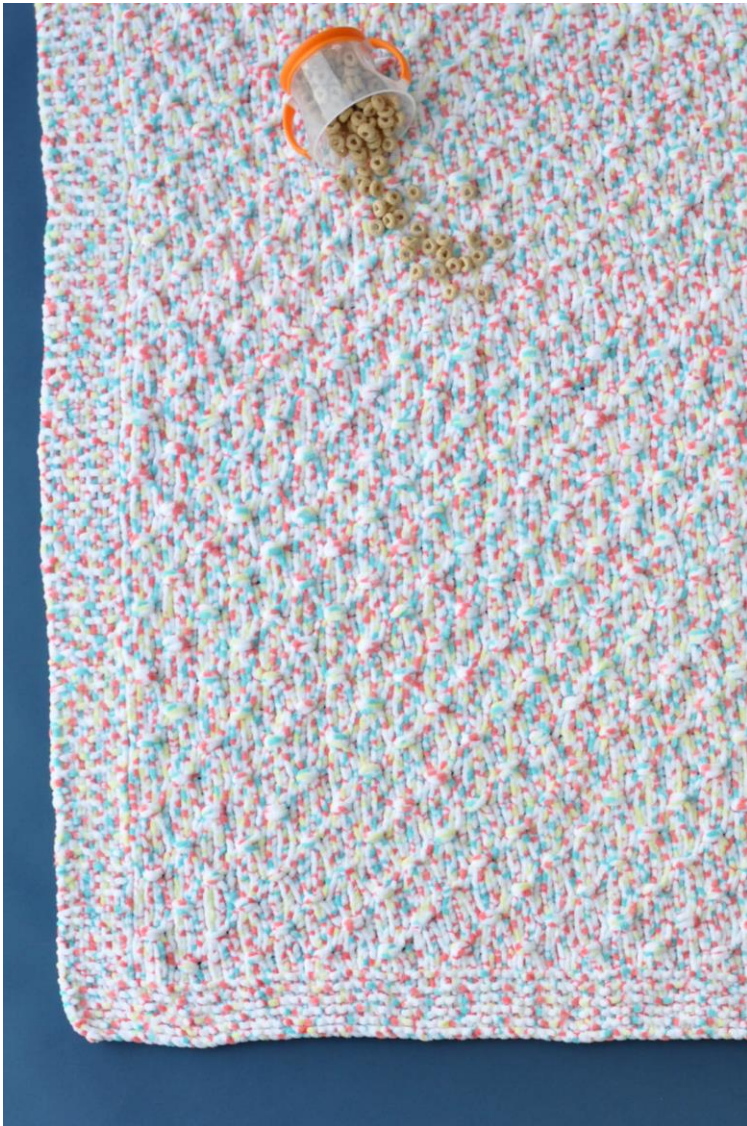




Pattern Collection: Children



Playtime Blankie

Designed by Universal Yarn Design Team

SIZES

One Size

FINISHED MEASUREMENTS

Length: 38"

Width: 38"

MATERIALS

Universal Yarn *Bella Chenille Multi*
(100% polyester; 100g/131 yds)

- 201 Tropical Mix – 5 balls

Needles: US Size 10 (6 mm) 40" circ (to accommodate number of sts) *or size needed to obtain gauge*

Notions: Tapestry needle, 2 stitch markers, cable needle (cn)

GAUGE

12 sts x 15 rows = 4" in Clusters patt

Save time, check your gauge.

Knit. Relax. Smile. Repeat!

2018 © Universal Yarn, Inc.

All rights reserved.

www.universalyarn.com

This pattern may not be reproduced for business, trade or sale.

PATTERN NOTES

Soft and squishy, your little one will feel snug as a bug curled up in this textured blanket. Bella Chenille is fun and fast to knit with and doesn't "worm" or curl out of control like other chenille yarns. The stitch pattern in this project is an easy way to add interest with minimal effort. This blanket is also easy to size up or down – just add or subtract multiples of 6 from your cast-on number.

STITCH GUIDE

Wrap 3: Slip next 3 sts pwise to cable needle (cn) and hold in front; working counter-clockwise, wrap yarn around these 3 sts 3 times, k3 from cn.

Clusters Patt

(multiple of 6 sts + 2)

Row 1 (RS): Knit.

WS Rows 2-8: Purl.

Row 3: K1, * wrap 3, k3; rep from * to last 4 sts, wrap 3, k1.

Row 5: Knit.

Row 7: K1, * k3, wrap 3; rep from * to last 4 sts, k4.

Rep Rows 1-8 for patt.

BLANKET

Cast on 109 sts.

Border

Row 1 (RS): Knit.

Row 2 (WS): Knit.

Rep Rows 1-2, 4 more times, then rep Row 1, 1 time.

Establish Pattern

Set-up Row (WS): K7, pm, purl to last 7 sts, pm, knit to end.

Row 1 (RS): Knit to m, sl m, work Row 1 of Cluster patt to m, sl m, knit to end – pattern will be repeated 15 times across row.

Row 2: Knit to m, sl m, work Row 2 of Cluster patt to m, sl m, knit to end.

Row 3: Knit to m, sl m, work Row 3 of Cluster patt to m, sl m, knit to end.

Row 4: Knit to m, sl m, work Row 4 of Cluster patt to m, sl m, knit to end.

Row 5: Knit to m, sl m, work Row 5 of Cluster patt to m, sl m, knit to end.

Row 6: Knit to m, sl m, work Row 6 of Cluster patt to m, sl m, knit to end.

Row 7: Knit to m, sl m, work Row 7 of Cluster patt to m, sl m, knit to end.

Row 8: Knit to m, sl m, work Row 8 of Cluster patt to m, sl m, knit to end.

Rep Rows 1-8, 17 more times ending with Row 8 of patt.

Border

Row 1 (RS): Knit.

Row 2 (WS): Knit.

Rep Rows 1-2, 5 more times. Bind off all sts.

FINISHING

Weave in ends.

Abbreviations

k	knit
m	marker
p	purl
patt	pattern
pm	place marker
pwise	purlwise
rep	repeat
RS	right side
sl	slip
st(s)	stitch(es)
WS	wrong side
cn	cable needle

Knit. Relax. Smile. Repeat!

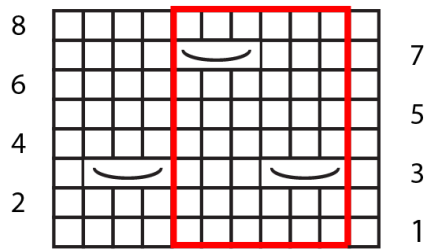
2018 © Universal Yarn, Inc.

All rights reserved.




www.universalyarn.com

This pattern may not be reproduced for business, trade or sale.

Clusters



Key

-  pattern repeat
-  knit on RS, purl on WS
-  wrap 3 sts

Knit. Relax. Smile. Repeat!

2018 © Universal Yarn, Inc.

All rights reserved.

www.universalyarn.com

This pattern may not be reproduced for business, trade or sale.