



Pattern Collection: Accessories



Planetary Shawl

Designed by Amy Gunderson

FINISHED MEASUREMENTS

Depth in Center: 25"

Wingspan: 62"

MATERIALS

Universal Yarn *Universe* (42% linen, 41% combed cotton, 9% glitter, 8% polyamide; 50g/246 yds)

- 10-06 Candy – 3 balls

Needles: US Size 5 (3.75 mm) 32" circular or size needed to obtain gauge

Notions: Stitch markers, tapestry needle

GAUGE

16 sts x 26 rows = 4" in St st

Save time, check your gauge.



Knit, Relax, Smile, Repeat!

2015 © Universal Yarn, Inc.

All rights reserved.

www.universalyarn.com

This pattern may not be reproduced for business, trade or sale.

PATTERN NOTES

This heart-shaped shawl is worked from the top down. There are 6 increase made on every right side row of the shawl body – 2 at each edge, and 1 on each side of the center stitch.

The edging is worked as a knit-on edge. It is joined to the shawl body at the beginning of every RS row by knitting a stitch from the shawl body together with a stitch from the edging.

SHAWL BODY

Starting Tab

Cast on 3 sts. Knit 8 rows.

Next row (RS): K3, rotate work 90 degrees, pick up and knit 5 sts from side of Tab, pick up and knit 3 sts – 11 sts.

Next row (WS): P5, pm, p1, pm, p5.

Work Rows 1-24 of Shawl Body chart, then rep Rows 13-24, 7 more times, then rep Rows 13-23, 1 more time – 371 sts.

Purl to center m, pfb, purl to end – 372 sts.

Edging

Cast on 10 sts to first st on ndl using knitted cast on.

Row 1 (RS): [K1, yo] 2 times, k1, [k2tog, yo, k1] 2 times, k2tog tbl (last Edging st tog with next Shawl Body st), turn – 12 Edging sts.

WS Rows 2-10: Sl 1 pwise wyib, knit to end.

Row 3: [K1, yo] 2 times, k2, [k2tog, yo, k1] 2 times, k1, k2tog tbl (last Edging st tog with next Shawl Body st), turn – 14 Edging sts.

Row 5: [K1, yo] 2 times, k3, [k2tog, yo, k1] 2 times, k2, k2tog tbl (last Edging st tog with next Shawl Body st), turn – 16 Edging sts.

Row 7: [K1, yo] 2 times, k4, [k2tog, yo, k1] 2 times, k3, k2tog tbl (last Edging st tog with next Shawl Body st), turn – 18 Edging sts.

Row 9: [K1, yo] 2 times, k5, [k2tog, yo, k1] 2 times, k4, k2tog tbl (last Edging st tog with next Shawl Body st), turn – 20 Edging sts.

Row 11: Bind off 10 sts, knit to last Edging st, k2tog tbl (last Edging st tog with next Shawl Body st), turn – 10 Edging sts rem.

Row 12: Sl 1 pwise wyib, knit to end.

Rep Rows 1-12 until all Shawl Body sts have been worked. Bind off rem Edging sts.

FINISHING

Weave in ends. Wet block shawl tightly, using blocking wires for upper edge of Shawl and pinning out points from Edging.

Abbreviations

beg	begin(ning)
bet	between
circ	circular
cont	continue
dec('d)	decrease(d)
inc('d)	increase(d)
k	knit
k2tog	knit 2 stitches together (1 st dec'd)
LH	left hand
m	marker
meas	measures
ndl	needle
patt	pattern
p	purl
pfb	purl into the front and back of next st (1 st inc'd)
pm	place marker
psso	pass slipped stitch(es) over
rem	remain(ing)
rep	repeat
RH	right hand
RS	right side
ssk	slip next 2 sts individually knitwise, slip them back to left needle in this position, knit them together through the back loops (1 st dec'd)
st(s)	stitch(es)
St st	Stockinette stitch (knit on RS rows, purl on WS rows; in the rnd, knit every rnd)
tbl	through the back loop(s)
tog	together
WS	wrong side
wyib	with yarn held in back
yo	yarn over

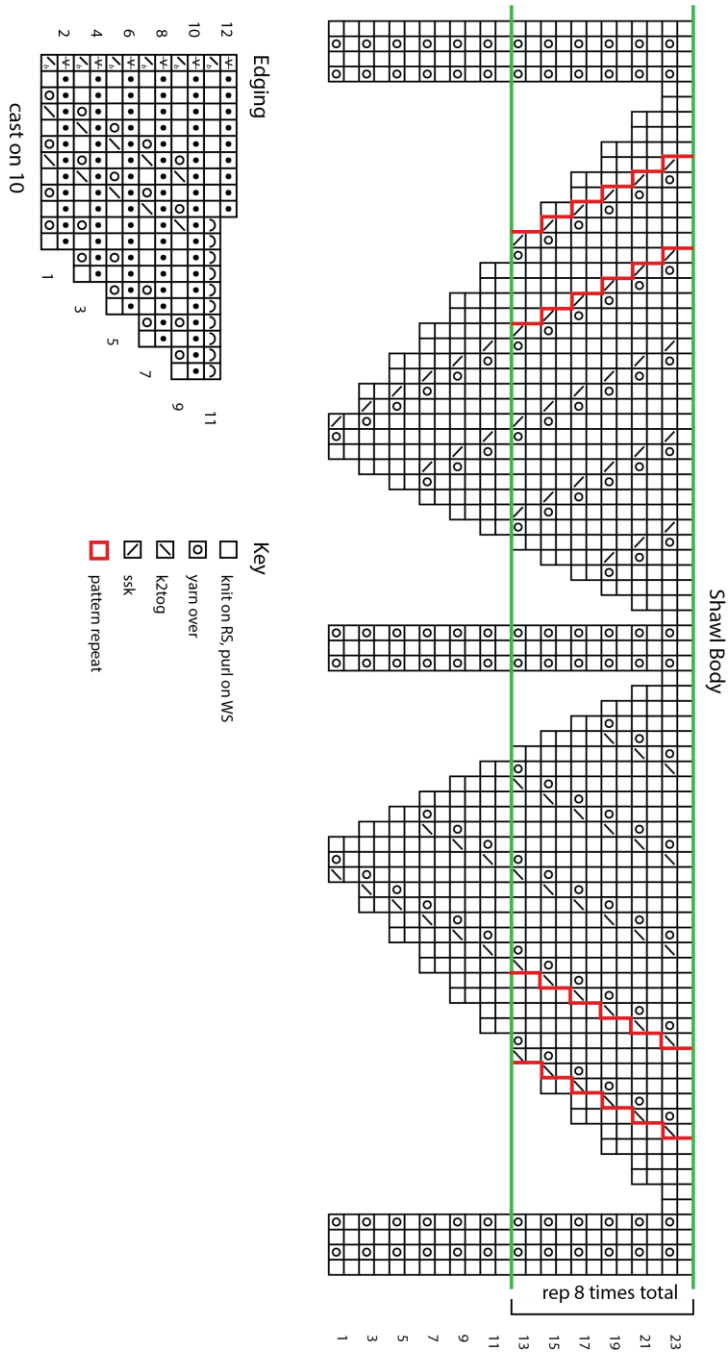
Knit. Relax. Smile. Repeat!

2015 © Universal Yarn, Inc.

All rights reserved.

www.universalyarn.com

This pattern may not be reproduced for business, trade or sale.



Knit, Relax, Smile, Repeat!

2015 © Universal Yarn, Inc.

All rights reserved.

www.universalyarn.com

This pattern may not be reproduced for business, trade or sale.