



## Pattern Collection: Accessories



### Plaid Cowl

Designed by Amy Gunderson

### SIZES

One Size

### FINISHED MEASUREMENTS

Circumference: 25¾"

Depth: 15"

### MATERIALS

**Rozetti Yarns Cinema** (70% wool, 25% nylon, 5% cashmere; 100g/109 yds)

- 301 Spice Market (MC) – 2 skeins

**Universal Yarn Deluxe Chunky** (100% wool; 100g/120 yds)

- 91908 Woodsy Heather (CC1) – 1 skein
- 91905 Rust Heather (CC2) – 1 skein

**Needles:** US Size 10 (6 mm) 24" circular or size needed to obtain gauge

**Notions:** Stitch marker, tapestry needle, US Size J-10 (6 mm) crochet hook

### GAUGE

14 sts x 18 rows = 4" in St st

**Save time, check your gauge.**

*Knit. Relax. Smile. Repeat!*

2019 © Universal Yarn, Inc.

All rights reserved.

[www.universalyarn.com](http://www.universalyarn.com)

This pattern may not be reproduced for business, trade or sale.

## PATTERN NOTES

Bold lines, vibrant colors, and a touch of cashmere make this cowl an irresistible project. Worked seamlessly in the round, this cowl features a seed stitch border and combines stripes and applied crochet lines to create a plaid effect.

The purl columns in the Plaid Pattern serve two purposes: they form “reminder” lines for where the slip-stitch crochet chains go. They also allow the slip-stitch chains to “nest,” blending almost seamlessly into the rest of the fabric.

When working in Plaid Pattern, there is no need to cut contrast colors – instead, carry yarn through the inside of the work.

## Applied Crochet Lines

Holding yarn beneath work, insert crochet hk through the center of the first purl st in a column. Pull a lp of yarn through to the front of the work. \* Insert hk through the next st up in the same purl column, pull a lp of yarn through to the front of the work (2 lps on hk), pull the second lp through the first lp (1 lp on hk); rep from \* along entire column.

## STITCH GUIDE

### Seed Stitch

(even number of sts)

**Rnd 1:** \* K1, p1; rep from \* to end.

**Rnd 2:** \* P1, k1; rep from \* to end.

Rep Rnds 1-2 for patt.

## COWL

### Lower Edge

With MC, cast on 90 sts. PM and join to work in the rnd, being careful not to twist. Work in Seed Stitch for 4 rnds.

### Main Cowl

*Note: Join CC1 and CC2 as indicated on chart.*

Work Rnds 1-10 of Plaid Patt 5 times, then work Rnds 1-9 once.

### Upper Edge

With MC, work in Seed Stitch for 4 rnds. Bind off all sts.

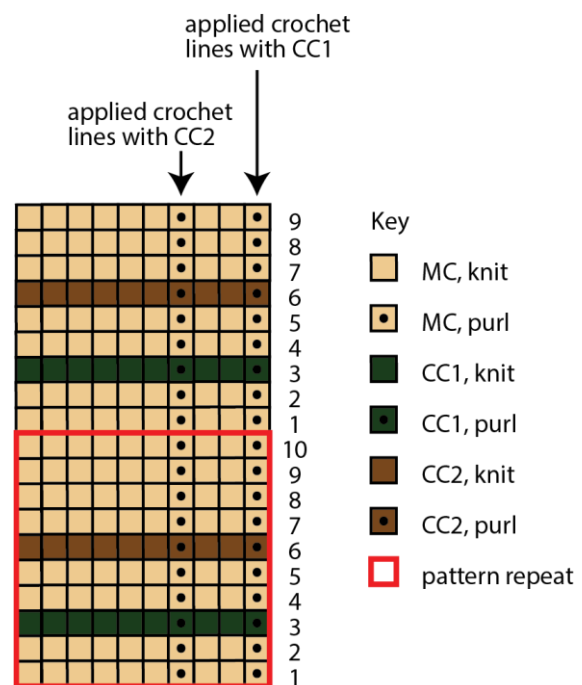
## FINISHING

Weave in ends. With CC1 & CC2, work applied crochet lines along columns of purl stitches where indicated on chart. Do not work applied crochet lines along the Seed Stitch sections.

## Abbreviations

<b>CC</b>	contrast color
<b>hk</b>	hook
<b>k</b>	knit
<b>lp(s)</b>	loop(s)
<b>MC</b>	main color
<b>p</b>	purl
<b>patt</b>	pattern
<b>pm</b>	place marker
<b>rep</b>	repeat
<b>rnd(s)</b>	round(s)
<b>st(s)</b>	stitch(es)

## Plaid Pattern



*Knit. Relax. Smile. Repeat!*

2019 © Universal Yarn, Inc.

All rights reserved.

[www.universalyarn.com](http://www.universalyarn.com)

This pattern may not be reproduced for business, trade or sale.