



Pattern Collection: Accessory



Piquilla Shawl

Designed by Edie Eckman

DIFFICULTY

Easy

SIZES

One Size

FINISHED MEASUREMENTS

Wingspan: 64"

Depth: 24"

MATERIALS

Universal Yarn Wool Pop (50% bamboo, 35% superwash wool, 15% polyamide; 100 g/284 yds)

- 614 Winter Squash (MC) – 3 skeins
- 610 Winter Blue (CC) – 2 skeins

Hook: US Size G/6 (4 mm) *or size needed to obtain gauge*

Notions: Tapestry needle, removable stitch markers

GAUGE

21 sts x 16 rows = 4" in pattern
(*Note: See Stitch Pattern for Gauge Swatch in Stitch Guide.*)

Save time, check your gauge.

Knit. Relax. Smile. Repeat!

2020 © Universal Yarn, Inc.

All rights reserved.

www.universalyarn.com

This pattern may not be reproduced for business, trade or sale.

PATTERN NOTES

Piquilla is an open, cozy crochet shawl featuring alternating stripes of color. Worked up in Wool Pop, a blend of bamboo, wool, and nylon, this accessory is perfect for every season.

This shawl is worked from the top down with increases at the center back and each side. A marker will indicate the center back. Increases occur on every row.

The instructions are written to minimize the number of ends you need to weave in. Follow the directions for turning or not turning at the end of each row, carrying unused yarn up the side. Only cut yarn when directed to do so.

To change colors at the end of Rows 2 and 4 of pattern, work the last sc as follows: insert hook into stitch, yarn over and pull up a lp, place dropped MC lp on hk and pull this MC loop through two lps on hk to complete the sc and change to MC.

STITCH GUIDE

Stitch Pattern for Gauge Swatch

With MC, ch 34 (a multiple of 2).

Foundation Row (RS): Dc in 6th ch from hk (skipped chs count as dc, ch-1 sp), [ch 1, sk 1 ch, dc in next ch] across; do not turn – 26 dc, 25 ch-1 sps. Drop MC lp from hk (placing on st marker as holder if desired).

Row 1 (RS): Join CC with sl st in first st, ch 1 (does not count as st), sc in same st, sc in next ch-1 sp, [ch 1, sc in next sp] to last st, sc in last st, changing to MC; turn.

Row 2 (WS): With MC, ch 4 (counts as dc, ch 1), sk 1 sc, [dc in next sp, ch 1] to last sp, sk 1 sc, dc in last sc; do not turn. Drop MC lp from hk.

Row 3 (WS): Insert hk into first st and pull up a loop of CC, ch 1 (does not count as sc), sc in first st, sc in next sp, [ch 1, sc in next sp] to last st, sc in last st, changing to MC; turn.

Row 4 (RS): With MC, ch 4 (counts as dc, ch 1), sk 1 sc, [dc in next sp, ch 1] to last sp, sk 1 sc, dc in last sc; do not turn. Drop MC lp from hk.

Row 5 (RS): Insert hk into first st and pull up a loop of CC, ch 1 (does not count as sc), sc in first st, sc in next sp, [ch 1, sc in next sp] to last st, sc in last st, changing to MC; turn.
Rep Rows 2-5 for patt.

SHAWL

Note: This section is also charted.

With MC, ch 89.

Foundation Row 1 (RS): Dc in 5th ch from hk (4 skipped chs count as dc, ch-1 sp), [ch 1, sk 1 ch, dc in next ch] 20 times, ch 1, sk 1 ch, (dc, ch 3, dc) in next ch, pm in ch-3 sp and move this m up as you work each row, [ch 1, sk 1 ch, dc in next ch] to last 2 ch, ch 1, sk 1 ch, (dc, ch 1, dc) in last ch; do not turn – 44 ch-1 sps and 1 marked ch-3 corner sp; do not turn. Drop MC lp from hk (placing lp on holder if desired).

Row 1 (RS): Join CC with slip st in first st, ch 1 (does not count as st), sc in same st, ch 1, [sc in next ch-1 sp, ch 1] to marked corner sp, (sc, ch 1, sc) in ch-3 corner sp, ch 1, [sc in next ch-1 sp, ch 1] to last st, sc in last st, changing to MC; turn – 46 ch-1 sps, 1 ch-1 corner sp.

Row 2 (WS): With MC, ch 3 (counts as dc here and throughout), (dc, ch 1) 2 times in first ch-1 sp, [dc in next sp, ch 1] to corner sp, (dc, ch 3, dc) in corner sp, ch 1, [dc in next sp, ch 1] to last sp, (dc, ch 1, dc) in last sp, dc in last st; do not turn – 48 ch-1 sps, 1 ch-3 corner sp. Drop MC loop from hk.

Row 3 (WS): Insert hk into first st and pull up a loop of CC, ch 1 (does not count as st), 2 sc in first st, ch 1, skip 1 dc, [sc in next sp, ch 1] to corner sp, (sc, ch 1, sc) in corner sp, ch 1, [sc in next sp, ch 1] to last sp, skip next dc, 2 sc in last dc, changing to MC, turn – 50 ch-1 sps, 1 ch-1 corner sp.

Row 4 (RS): With MC, ch 4 (counts as dc, ch 1), dc in same st, ch 1, skip 1 sc, [dc in next sp, ch 1] to corner sp, (dc, ch 3, dc) in corner space, ch 1, [dc in next sp, ch 1] to last sp, sk 1 sc, (dc, ch 1, dc) in last st; do not turn – 52 ch-1 sps, 1 ch-3 corner sp. Drop MC loop from hk.

Knit. Relax. Smile. Repeat!

2020 © Universal Yarn, Inc.

All rights reserved.

www.universalyarn.com

This pattern may not be reproduced for business, trade or sale.



beginning of rnd, 2 sc in same corner st as beg, join with sl st to first sc. Fasten off.

FINISHING

Gently wash and block to finished measurements. Weave in ends.

Abbreviations

beg	begin(ning)
CC	contrast color
ch	chain
dc	double crochet
hk	hook
lp(s)	loop(s)
m	marker
MC	main color
pm	place marker
rep	repeat
RS	right side
sc	single crochet
sk	skip
sl	slip
sp(s)	space(s)
st(s)	stitch(es)
WS	wrong side

Row 5 (RS): Insert hk into first st and pull up a loop of CC, ch 1 (does not count as st), sc in same st, ch 1, [sc in next ch-1 sp, ch 1] to corner sp, (sc, ch 1, sc) in corner sp, ch 1, [sc in next sp, ch 1] to last st, sc in last st, changing to MC; turn – 54 ch-1 sps, 1 ch-1 corner sp.

Rep Rows 2-5, until piece meas approx. 17¼” from foundation chain, ending with Row 5. Do not turn at end of last row. Cut CC, do not cut MC.

Edging

Rnd 1 (RS): With MC, ch 1, 2 sc in corner st, sc evenly along selvedge to foundation ch, 2 sc in corner st; working along foundation edge, [sc in next sp, ch 1] to space before center back neck, sc in next 2 ch-1 sps, [ch 1, sc in next sp] to sp corner, 2 sc in corner st; sc evenly along selvedge to corner; 4 sc in corner st; working across last row, [sc in next sp, ch 1] to corner sp, (sc, ch 1, sc) in corner, ch 1 [sc in next sp, ch 1] to

Knit. Relax. Smile. Repeat!

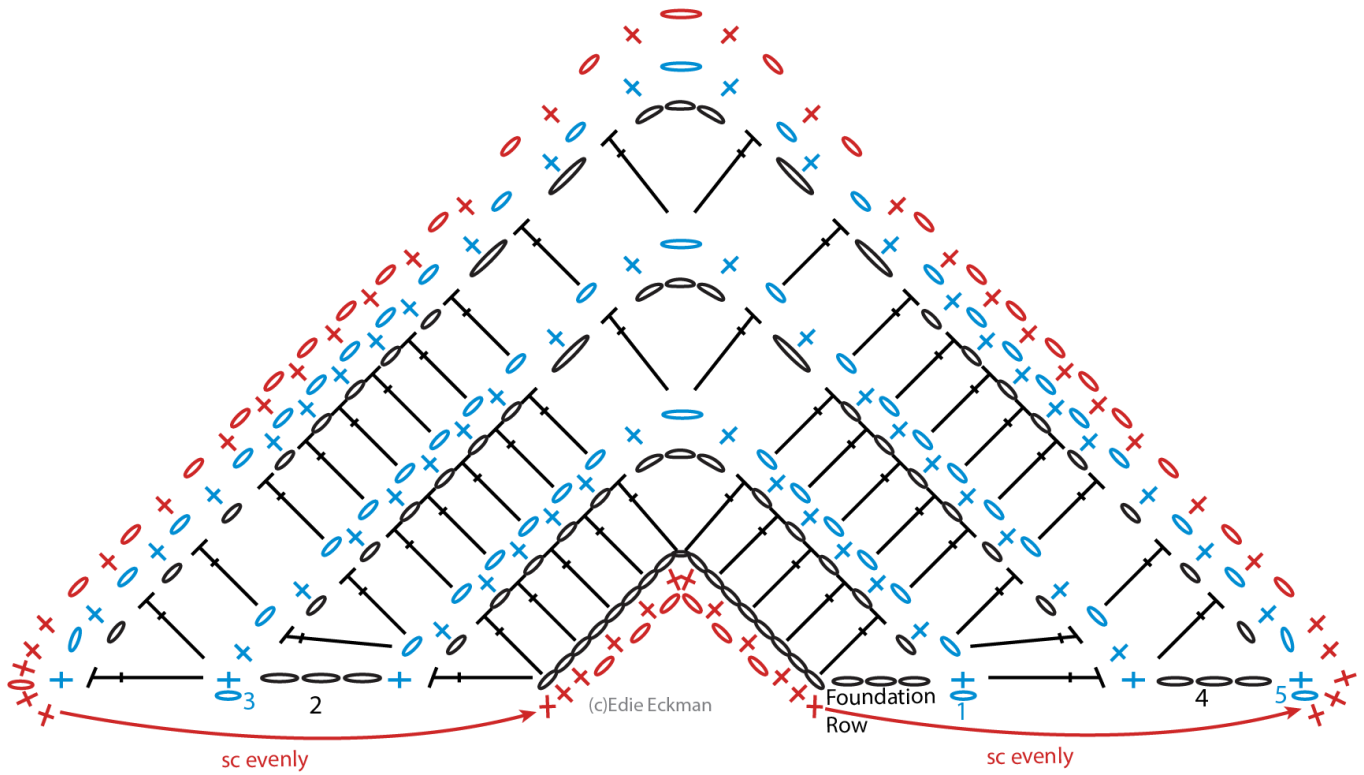
2020 © Universal Yarn, Inc.

All rights reserved.

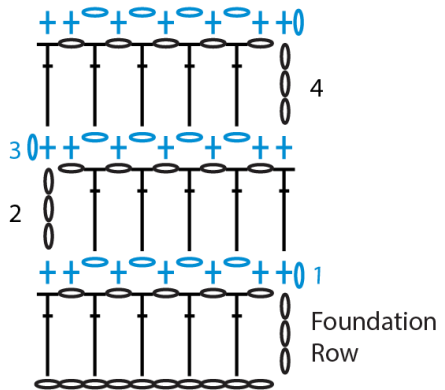
www.universalyarn.com

This pattern may not be reproduced for business, trade or sale.







Shawl Diagram



Switch Chart



Key

-  ch
-  sc
-  dc
-  MC
-  CC
-  MC-edging

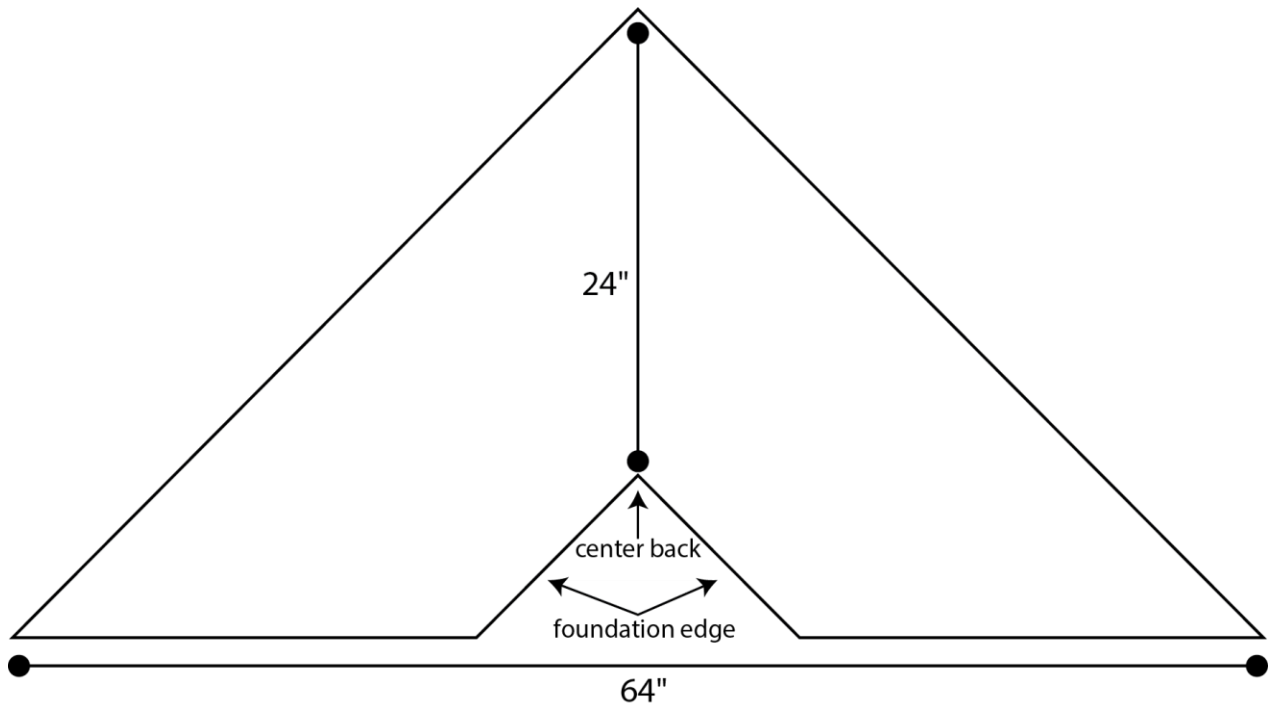
Knit. Relax. Smile. Repeat!

2020 © Universal Yarn, Inc.

All rights reserved.

www.universalyarn.com

This pattern may not be reproduced for business, trade or sale.



Knit. Relax. Smile. Repeat!

2020 © Universal Yarn, Inc.

All rights reserved.

www.universalyarn.com

This pattern may not be reproduced for business, trade or sale.