



## Pattern Collection: Children



### Picket Cardigan

Designed by Universal Yarn  
Design Team

### SIZES

3 mo (6 mo, 12 mo, 24 mo)

### FINISHED MEASUREMENTS

Chest: 18 (20, 21, 22)"

### MATERIALS

**Universal Yarn Little Bird** (100% acrylic; 100g/344 yds)

- 110 New Leaf – 1 (2, 2, 2) balls

**Needles:** US Size 3 (3.25 mm) straight

US Size 4 (3.5 mm) straight

**Notions:** Tapestry needle, 2 cable needles (cn), stitch markers, 8 (9, 10, 11) 5/8" buttons

### GAUGE

24 sts x 32 rows = 4" in St st using larger ndl

20-stitch Lattice Cable = 2¼" wide

**Save time, check your gauge**

*Knit, Relax, Smile, Repeat!*

2013 © Universal Yarn, Inc.

All rights reserved.

[www.universalyarn.com](http://www.universalyarn.com)

This pattern may not be reproduced for business, trade or sale.

## PATTERN NOTES

This cardigan is knit in pieces and seamed. The back and sleeves are worked in plain stockinette stitch, while the fronts are cabled.

When working raglan and neck shaping on front pieces, maintain stitches in patt as much as possible.

Buttonholes are written to be on the right side or “girl” side of this cardigan. For boys, place buttonholes on the left side if desired.

## STITCH GUIDE

**2x2 RC:** Sl next 2 sts to cn and hold in back, k2 from left ndl, k2 from cn.

**2x2 LC:** Sl next 2 sts to cn and hold in front, k2 from left ndl, k2 from cn.

**2x2 RPC:** Sl next 2 sts to cn and hold in back, k2 from left ndl, p2 from cn.

**2x2 LPC:** Sl next 2 sts to cn and hold in front, p2 from left ndl, k2 from cn.

**2x2x2 LC:** Sl next 2 sts to cn and hold in front, sl next 2 sts to cn and hold in back, k2 from left ndl, p2 from back cn, k2 from front cn.

## BACK

With smaller ndl, cast on 56 (60, 64, 68) sts.

### Hem

**Row 1 (RS):** K1, [p2, k2] to last 3 sts, p2, k1.

**Row 2 (WS):** P1, k2, [p2, k2] to last st, p1.

Rep Rows 1-2, 2 more times.

### Body

Switch to larger ndl. Work in St st until piece meas 5½ (6½, 7½, 8½)” from cast-on edge, ending with WS row.

### Raglan Shaping

Bind off 2 sts at beg of next 2 rows – 52 (56, 60, 64) sts rem.

**Dec row (RS):** K2, ssk, knit to last 4 sts, k2tog, k2 – 2 sts dec’d. Rep Dec row every RS row, 14 (15, 17, 19) more times. Bind off rem 22 (24, 24, 26) sts.

## SLEEVES

With smaller ndl, cast on 34 (36, 38, 40) sts.

## Cuff

**3 (12 mo) sizes only:**

**Row 1 (RS):** [K2, p2] to last 2 sts, k2.

**Row 2 (WS):** P2, [k2, p2] to end.

**6 (24) mo sizes only:**

**Row 1 (RS):** K1, [p2, k2] to last 3 sts, p2, k1.

**Row 2 (WS):** P1, k2, [p2, k2] to last st, p1.

### All Sizes:

Rep Rows 1-2, 2 more times.

## Main Sleeve

Switch to larger ndl. Work 2 rows in St st.

**Inc row (RS):** K2, m1, knit to last 2 sts, m1, k2 – 2 sts inc’d. Rep Inc row every 14 (12, 10, 10) rows, 1 (2, 3, 4) more time(s) – 38 (42, 46, 50) sts. Work even in St st until piece meas 5½ (6½, 7½, 8½)” from cast-on edge, ending with WS row.

### Raglan Shaping

Bind off 2 sts at beg of next 2 rows – 34 (38, 42, 46) sts rem.

**Dec row (RS):** K2, ssk, knit to last 4 sts, k2tog, k2 – 2 sts dec’d. Rep Dec row every RS row, 14 (15, 17, 19) more times. Bind off rem 4 (6, 6, 8) sts.

## LEFT FRONT

With smaller ndl, cast on 36 (39, 41, 43) sts.

### Hem

**3 mo size only:**

**Row 1 (RS):** K1, p2, [k2, p2] to last st, k1.

**Row 2 (WS):** P1, [k2, p2] to last 3 sts, k2, p1.

**6 (24 mo) sizes only:**

**Row 1 (RS):** P2, [k2, p2] to last st, k1.

**Row 2 (WS):** P1, [k2, p2] to last 2 sts, k2.

**12 mo size only:**

**Row 1 (RS):** [K2, p2] to last st, k1.

**Row 2 (WS):** P1, [k2, p2] to end.

### All sizes:

Rep Rows 1-2, 2 more times.

## Establish Pattern

Switch to larger ndl.

*Knit. Relax. Smile. Repeat!*

2013 © Universal Yarn, Inc.

All rights reserved.

[www.universalyarn.com](http://www.universalyarn.com)

This pattern may not be reproduced for business, trade or sale.

**Row 1 (RS):** K1 (4, 6, 8), p2, pm, work Row 1 of Ribbed Cable patt over 6 sts, pm, p4, pm, work Row 1 of Lattice Cable patt over 20 sts, pm, p3.

**Row 2 (WS):** K3, work Row 2 of Lattice Cable patt to m, k4, work Row 2 of Ribbed Cable patt to m, k2, purl to end.

Cont in patt as est'd until piece meas 5½ (6½, 7½, 8½)" from cast-on edge, ending with WS row.

### Raglan Shaping

Bind off 2 sts at beg of next RS row – 34 (37, 39, 41) sts rem. Work a WS row even.

**Dec row (RS):** K2, ssk, work in patt to end. – 1 st dec'd. Rep Dec row every RS row, 6 (7, 9, 10) more times – 27 (29, 29, 30) sts rem.

### Shape Neck, Continue Raglan Shaping

**Row 1 (RS):** K2, ssk, work in patt to end.

**Row 2:** Bind off 3 (5, 5, 6) sts, work in patt to end.

**RS Rows 3-15:** Rep Row 1.

**Row 4:** Bind off 3 sts, work in patt to end.

**Rows 6, 8, 10, 12:** Bind off 2 sts, work in patt to end.

**Rows 14, 16:** Bind off 1 st, work in patt to end. Bind off rem sts.

### RIGHT FRONT

With smaller ndl, cast on 36 (39, 41, 43) sts.

### Hem

#### 3 mo size only:

**Row 1 (RS):** K1, [p2, k2] to last 3 sts, p2, k1.

**Row 2 (WS):** P1, k2, [p2, k2] to last st, p1.

#### 6 (24 mo) sizes only:

**Row 1 (RS):** K1, [p2, k2] to last 2 sts, p2.

**Row 2 (WS):** K2, [p2, k2] to last st, p1.

#### 12 mo size only:

**Row 1 (RS):** K1, [p2, k2] to end.

**Row 2 (WS):** [P2, k2] to last st, p1.

#### All sizes:

Rep Rows 1-2, 2 more times.

### Establish Pattern

Switch to larger ndl.

**Row 1 (RS):** P3, pm, work Row 1 of Lattice Cable patt over 20 sts, pm, p4, pm, work Row 1 of Ribbed Cable over 6 sts, pm, p2, knit to end.

**Row 2 (WS):** Purl to 2 sts bef m, k2, work Row 2 of Ribbed Cable over 6 sts, k4, work Row 2 of Lattice Cable patt over 20 sts, k3.

Cont in patt as est'd until piece meas 5½ (6½, 7½, 8½)" from cast-on edge, ending with RS row.

### Raglan Shaping

Bind off 2 sts at beg of next WS row – 34 (37, 39, 41) sts rem.

**Dec row (RS):** Work in patt to last 4 sts, k2tog, k2 – 1 st dec'd. Rep Dec row every RS row, 6 (7, 9, 10) more times – 27 (29, 29, 30) sts rem.

### Shape Neck, Continue Raglan Shaping

**Row 1 (RS):** Bind off 3 (5, 5, 6) sts, work in patt to last 4 sts, k2tog, k2.

**WS Rows 2-16:** Work even in patt.

**Row 3:** Bind off 3 sts, work in patt to last 4 sts, k2tog, k2.

**Rows 5, 7, 9, 11:** Bind off 2 sts, work in patt to last 4 sts, k2tog, k2.

**Rows 13, 15:** Bind off 1 st, work in patt to last 4 sts, k2tog, k2.

Bind off rem sts.

### FINISHING

Block pieces to finished measurements. Sew Raglan seams. Sew side and Sleeve seams.

### Buttonband

With smaller ndl and RS facing, pick up and knit 44 (52, 60, 68) sts evenly along Left Front.

**Row 1 (WS):** [P2, k2] to last 2 sts, p2.

**Row 2 (RS):** [K2, p2] to last 2 sts, k2.

**Rows 3-6:** Cont in rib as est'd.

Bind off all sts kwise over the next WS row.

### Buttonhole Band

With smaller ndl and RS facing, pick up and knit 44 (52, 60, 68) sts evenly along Right Front.

**Row 1 (WS):** [P2, k2] to last 2 sts, p2.

**Row 2 (RS):** [K2, p2] to last 2 sts, k2.

**Row 3:** \* Work in patt over 4 sts, bind off 2 sts; rep from \* 6 (7, 8, 9) more times, work in patt to end – 7 (8, 9, 10) buttonholes.

**Row 4:** Work in patt, casting on 2 sts over each gap.

**Rows 5-6:** Cont in rib as est'd.

Bind off all sts kwise over the next WS row.

*Knit. Relax. Smile. Repeat!*

2013 © Universal Yarn, Inc.

All rights reserved.

[www.universalyarn.com](http://www.universalyarn.com)

This pattern may not be reproduced for business, trade or sale.

## Neck Edging

With smaller ndl nd RS facing, pick up and knit 6 sts along top of Buttonhole Band, 3 (4, 6, 7) sts along Right Neck bind off, 24 sts along Left Front Neck, 2 (4, 4, 6) sts along top of Right Sleeve, 20 (22, 22, 24) sts along Back Neck, 2 (4, 4, 6) sts along top of Left Sleeve, 24 sts along Right Front Nec,, 3 (4, 6, 7) sts along Left Neck bind off, and 6 sts along top of Buttonband.

**Row 1 (WS):** [P2, k2] to last 2 sts, p2.

**Row 2 (RS):** [K2, p2] to lst 2 sts, k2.

**Row 3:** Work in patt to last 4 sts, bind off 2, p2.

**Row 4:** K2, cast on 2 sts over gap, work in patt to end.

**Rows 5-6:** Cont in rib as est'd.

Bind off all sts kwise over the next WS row.

Sew buttons to Buttonband opposite buttonholes. Weave in ends.

## Abbreviations

<b>bef</b>	before
<b>beg</b>	begin(ning)
<b>bet</b>	between
<b>cn</b>	cable needle
<b>cont</b>	continue
<b>dec('d)</b>	decrease(d)
<b>est'd</b>	established
<b>inc('d)</b>	increase(d)
<b>k</b>	knit
<b>k2tog</b>	knit 2 stitches together (1 st
<b>dec'd)</b>	
<b>kwise</b>	knitwise
<b>LH</b>	left hand
<b>m</b>	marker
<b>m1</b>	insert left needle from front to back under horizontal strand of yarn lying between st just worked and next st, knit or purl this st through the back loop (1 st inc'd)
<b>meas</b>	measures
<b>ndl</b>	needle
<b>patt</b>	pattern
<b>p</b>	purl
<b>pm</b>	place marker

<b>rem</b>	remain(ing)
<b>rep</b>	repeat
<b>RH</b>	right hand
<b>RS</b>	right side
<b>sl</b>	slip
<b>ssk</b>	slip next 2 sts individually knitwise, slip them back to left needle in this position, knit them together through the back loops (1 st dec'd)
<b>st(s)</b>	stitch(es)
<b>St st</b>	Stockinette stitch (knit on RS rows, purl on WS rows; in the rnd, knit every rnd)
<b>tog</b>	together
<b>WS</b>	wrong side

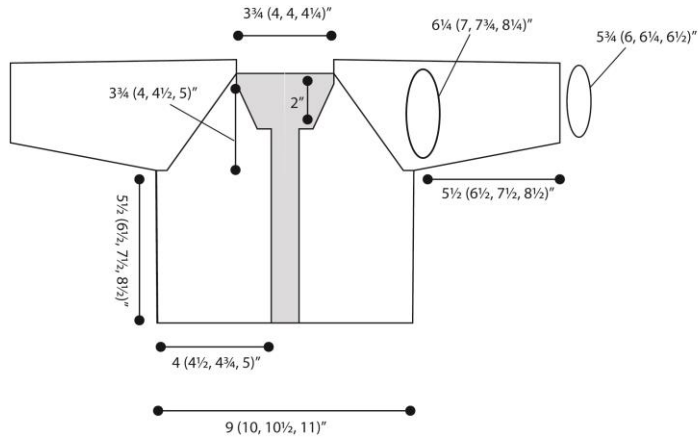
*Knit, Relax, Smile, Repeat!*

2013 © Universal Yarn, Inc.

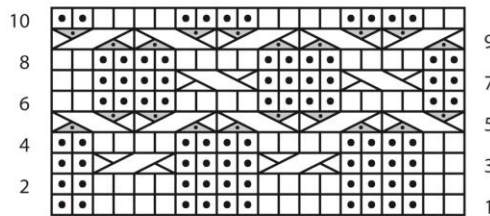
All rights reserved.

[www.universalyarn.com](http://www.universalyarn.com)

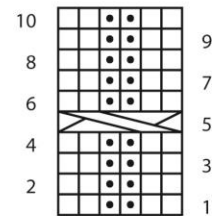
This pattern may not be reproduced for business, trade or sale.



Lattice Cable








Ribbed Cable



Key

- knit on RS, purl on WS
- ◻ purl on RS, knit on WS

-  2x2 RC
-  2x2 LC
-  2x2 RPC
-  2x2 LPC
-  2x2x2 LC

*Knit. Relax. Smile. Repeat!*

2013 © Universal Yarn, Inc.  
All rights reserved.  
www.universalyarn.com

This pattern may not be reproduced for business, trade or sale.